

SECTION A-A

NOTES:

FOR PIPE INSERT DETAILS, SEE BEARING SHEETS.

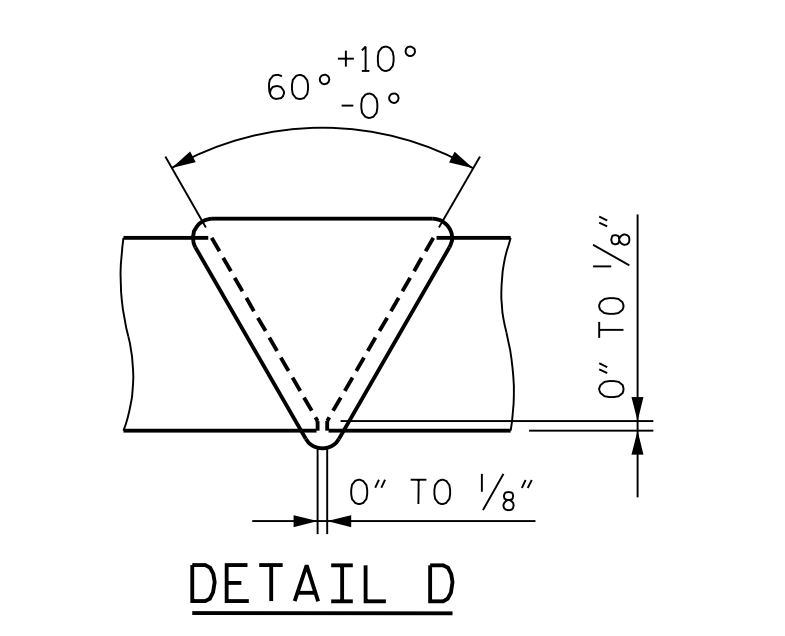
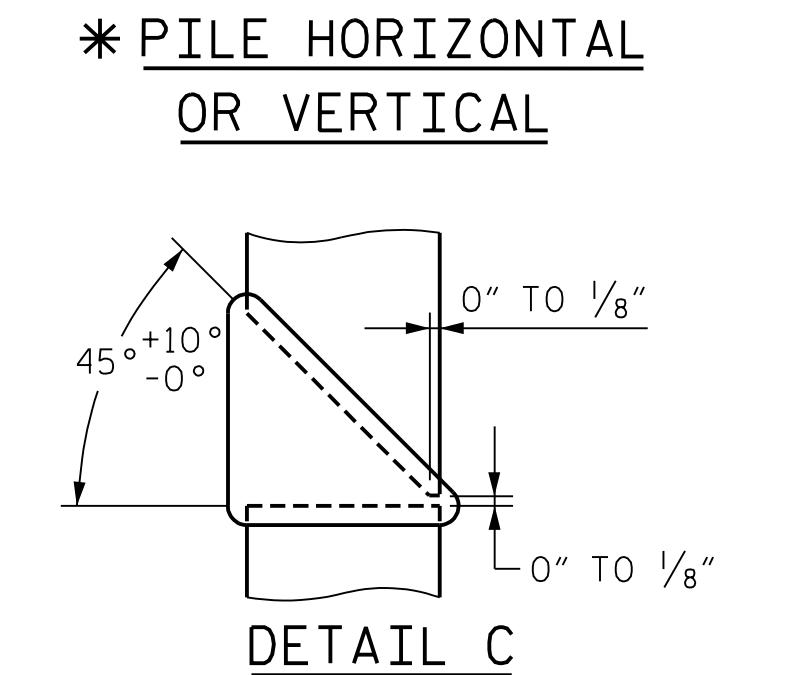
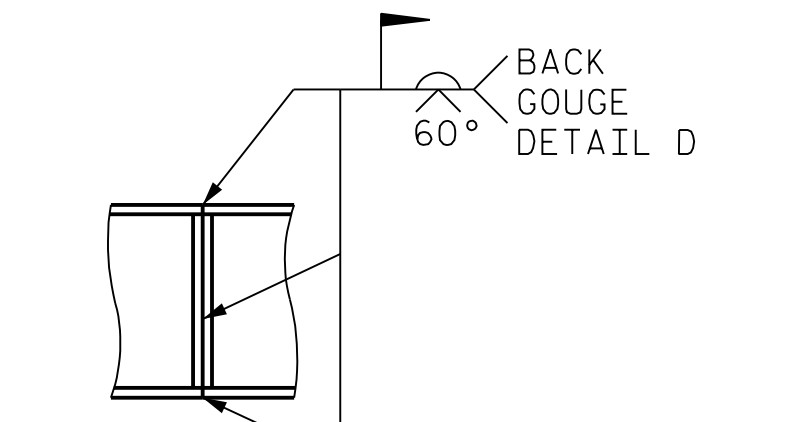
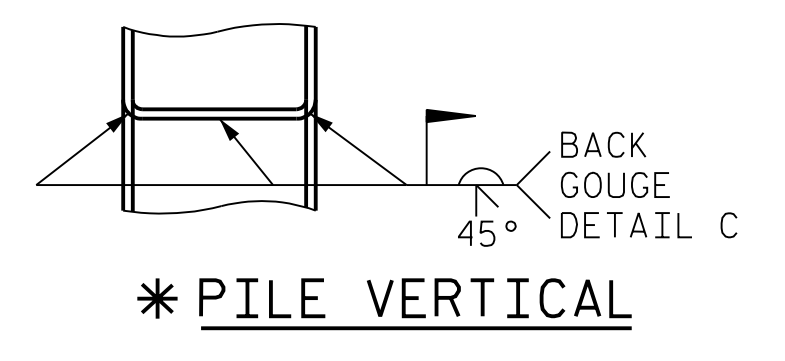
THE TOP SURFACE AREAS OF THE END BENT CAP SHALL BE CURED IN ACCORDANCE WITH THE STANDARD SPECIFICATIONS EXCEPT THAT THE MEMBRANE CURING COMPOUND METHOD SHALL NOT BE USED.

BACKWALL SHALL BE PLACED BEFORE APPLYING THE EPOXY PROTECTIVE COATING.

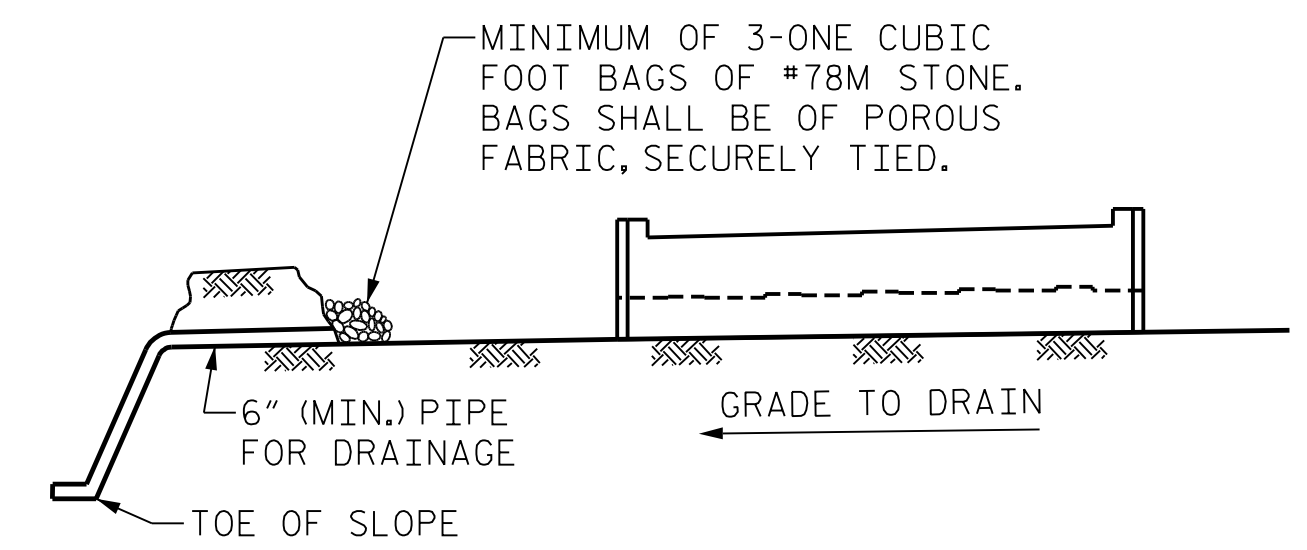
THE TOP SURFACE OF THE END BENT CAP, EXCEPT THE BRIDGE SEAT BUILDUPS, SHALL BE SLOPED TRANSVERSELY FROM THE FILL FACE TO THE BACK FACE AT THE RATE OF 2%.

STIRRUPS IN CAP MAY BE SHIFTED AS NECESSARY TO CLEAR ANCHOR BOLTS.

SEE GENERAL DRAWING "FOUNDATION LAYOUT" FOR ADDITIONAL NOTES FOR DRIVING PILES.



PILE SPLICE DETAILS
* = POSITION OF PILE DURING WELDING



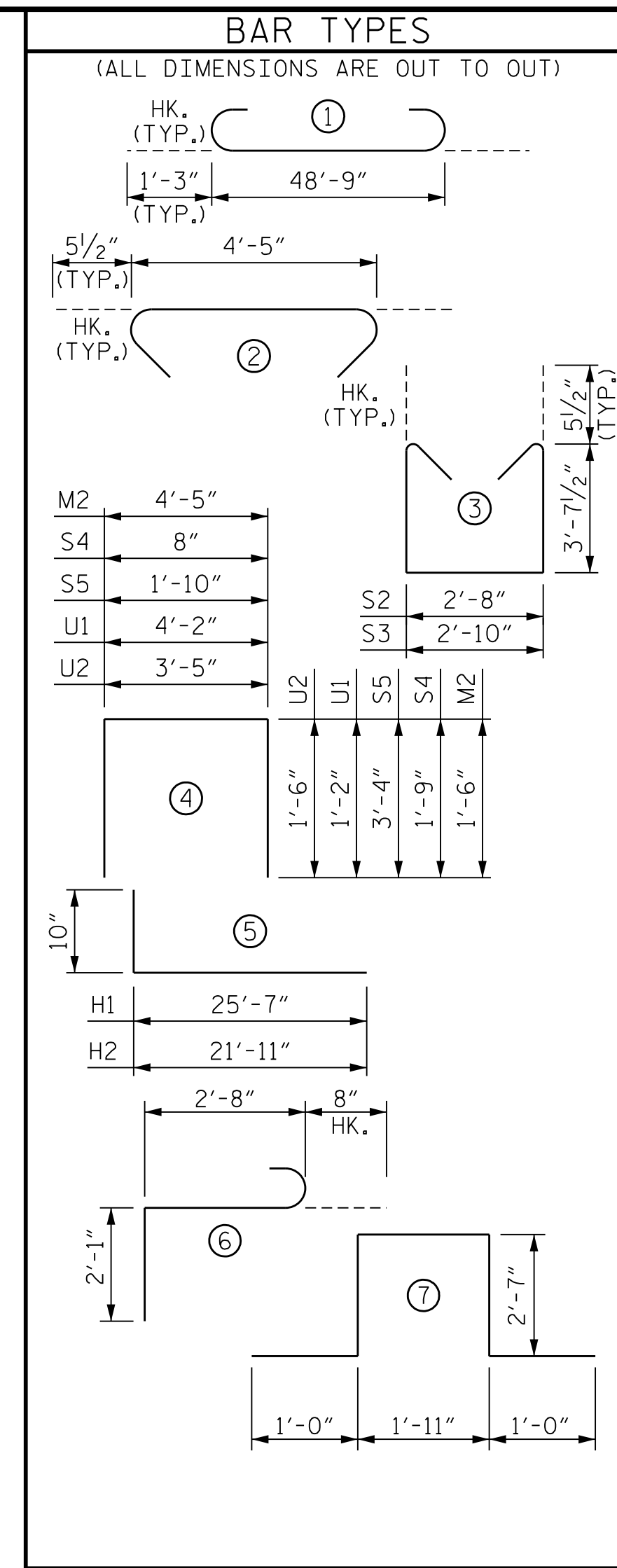
NOTES:

BAGGED STONE AND PIPE SHALL BE PLACED IMMEDIATELY AFTER COMPLETION OF END BENT EXCAVATION. PIPE MAY BE EITHER CONCRETE, CORRUGATED STEEL, CORRUGATED ALUMINUM ALLOY OR CORRUGATED PLASTIC. PERFORATED PIPE WILL NOT BE ALLOWED.

BAGGED STONE SHALL REMAIN IN PLACE UNTIL THE ENGINEER DIRECTS THAT IT BE REMOVED. THE CONTRACTOR SHALL REMOVE AND DISPOSE OF SILT ACCUMULATIONS AT BAGGED STONE WHEN SO DIRECTED BY THE ENGINEER. BAGS SHALL BE REMOVED AND REPLACED WHENEVER THE ENGINEER DETERMINES THAT THEY HAVE DETERIORATED AND LOST THEIR EFFECTIVENESS.

NO SEPARATE PAYMENT WILL BE MADE FOR THIS WORK AND THE ENTIRE COST OF THIS WORK SHALL BE INCLUDED IN THE UNIT CONTRACT PRICE FOR THE SEVERAL PAY ITEMS.

TEMPORARY DRAINAGE AT END BENT



BILL OF MATERIAL					
BAR NO.	NO.	SIZE	TYPE	LENGTH	WEIGHT
B1	11	#9	1	51'-3"	1917
B2	10	#6	STR	48'-11"	735
B3	16	#4	STR	25'-8"	275
B4	13	#4	STR	4'-5"	39
H1	24	#5	5	26'-5"	662
H2	56	#5	5	22'-9"	1329
K1	36	#4	STR	25'-9"	620
K2	8	#4	STR	2'-7"	14
M1	24	#4	STR	2'-8"	43
M2	12	#4	4	7'-5"	60
S1	50	#5	2	5'-4"	279
S2	50	#5	3	10'-10"	565
S3	50	#5	3	11'-0"	574
S4	44	#4	4	4'-2"	123
S5	96	#4	4	8'-6"	546
S6	6	#6	7	9'-1"	82
S7	6	#6	6	5'-5"	49
U1	14	#7	4	6'-6"	187
U2	8	#4	4	6'-5"	35
V1	88	#5	STR	11'-11"	1094
V2	52	#5	STR	13'-9"	746
V3	52	#5	STR	13'-4"	724
REINFORCING STEEL					LBS. 10698
CLASS "A" CONCRETE					
POUR 1: COLLAR, CAP, LOWER PART OF WINGS				CU. YDS.	47.6
POUR 2: BACKWALL & UPPER PART OF WINGS				CU. YDS.	32.0
TOTAL CONCRETE				CU. YDS.	79.6
HP 14x73 STEEL PILES					
				NO.	18
				LF	1620
PILE DRIVING EQUIPMENT SETUP FOR HP 14x73 STEEL PILES				EA.	18



10/15/2021

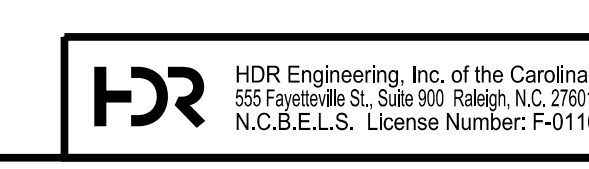
PROJECT NO. U-2579AB
 FORSYTH COUNTY
 STATION: 60+66.06 -Y15FLYAC-
 SHEET 3 OF 3

REVISIONS					
NO.	BY:	DATE:	NO.	BY:	DATE:
1	--	--	3	--	--
2	--	--	4	--	--

SHEET NO. 504-140
TOTAL SHEETS 144

PLOT DRIVER: NCDOT...
 USER: PPETERSO...
 DATE: 10/14/2021...
 FILE: ...SUBSTR...

DES BY: J. EARNEST	DATE: 07/19	DWG BY: B. PETERSON	DATE: 07/19
DES CHK: M. BARNES	DATE: 08/19	CHK BY: A. ZEITOUNI	DATE: 08/19



DOCUMENT NOT CONSIDERED FINAL UNLESS ALL SIGNATURES COMPLETED