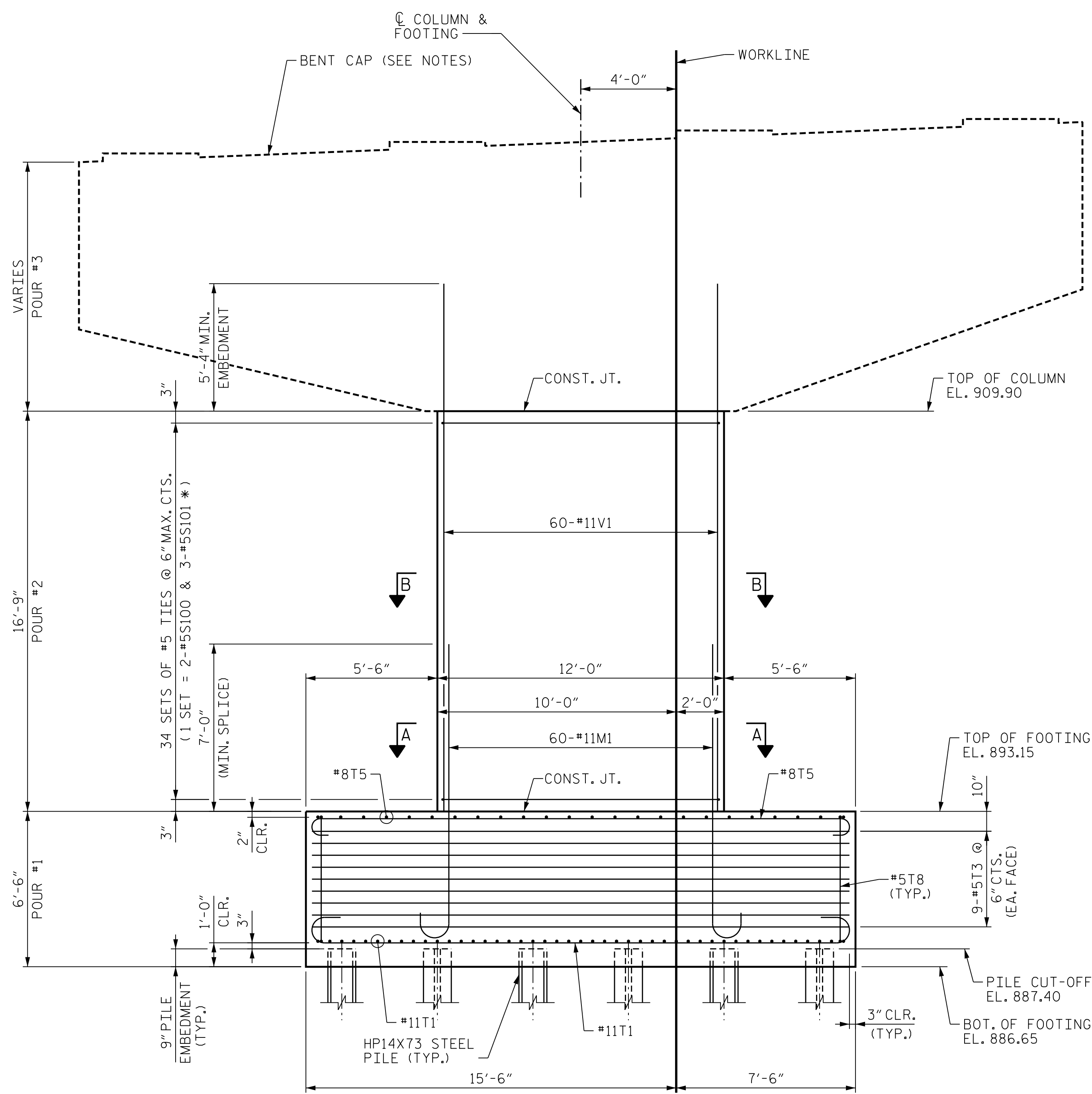
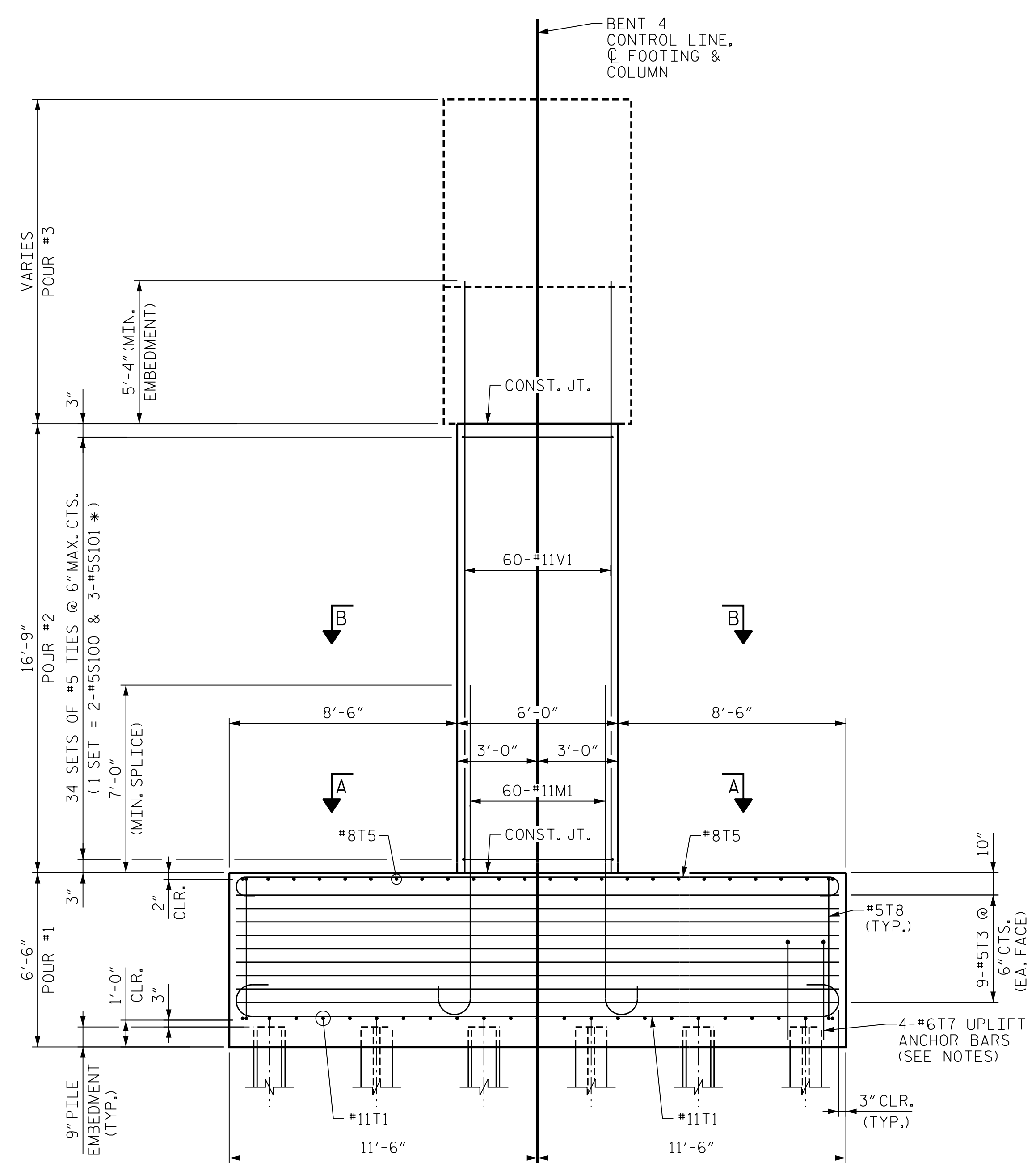


PLOT DRIVER: NCDOT\_pdf\_color\_eng-50dpi  
 USER: PPETERSO DATE: 10/14/2021  
 FILE: ...SUBSTR



FRONT ELEVATION



END ELEVATION

NOTES

FOR FOOTING PLAN, SECTION A-A AND SECTION B-B, SEE SHEET "SUBSTRUCTURE BENT 4 FOOTING & COLUMN DETAILS".  
 FOR DETAILS OF BENT CAP, SEE SHEET "SUBSTRUCTURE BENT 4 BENT CAP PLAN AND ELEVATION" AND SHEET "SUBSTRUCTURE BENT 4 BENT CAP DETAILS".  
 4-#6T7 UPLIFT ANCHOR BARS AT NOTED PILES - SEE SHEET "SUBSTRUCTURE BENT 4 FOOTING & COLUMN DETAILS" FOR LOCATIONS.  
 SEE SHEET "SUBSTRUCTURE BENT 1 ELEVATIONS" FOR ADDITIONAL NOTES AND PILE UPLIFT ANCHOR DETAIL.

\* INVERT ORIENTATION OF ALTERNATE #5S101 TIES

PROJECT NO. U-2579AB  
 FORSYTH COUNTY  
 STATION: 60+66.06 -Y15FLYAC-

SHEET 1 OF 5

STATE OF NORTH CAROLINA  
 DEPARTMENT OF TRANSPORTATION  
 RALEIGH

**SUBSTRUCTURE BENT 4 ELEVATIONS**



*Domenic A. Colletti* 10/15/2021

DES BY: J. CABABE	DATE: 10/19	DWG BY: B. PETERSON	DATE: 10/19
DES CHK: S. CHAUDHARI	DATE: 10/19	CHK BY: N. LIU	DATE: 11/19

**HDR** HDR Engineering, Inc. of the Carolinas  
 555 Fayetteville St., Suite 900 Raleigh, N.C. 27601  
 N.C.B.E.L.S. License Number: F-0116

DOCUMENT NOT CONSIDERED FINAL  
 UNLESS ALL SIGNATURES COMPLETED

REVISIONS					
NO.	BY:	DATE:	NO.	BY:	DATE:
1	--	--	3	--	--
2	--	--	4	--	--

SHEET NO. S04-10B  
 TOTAL SHEETS 144