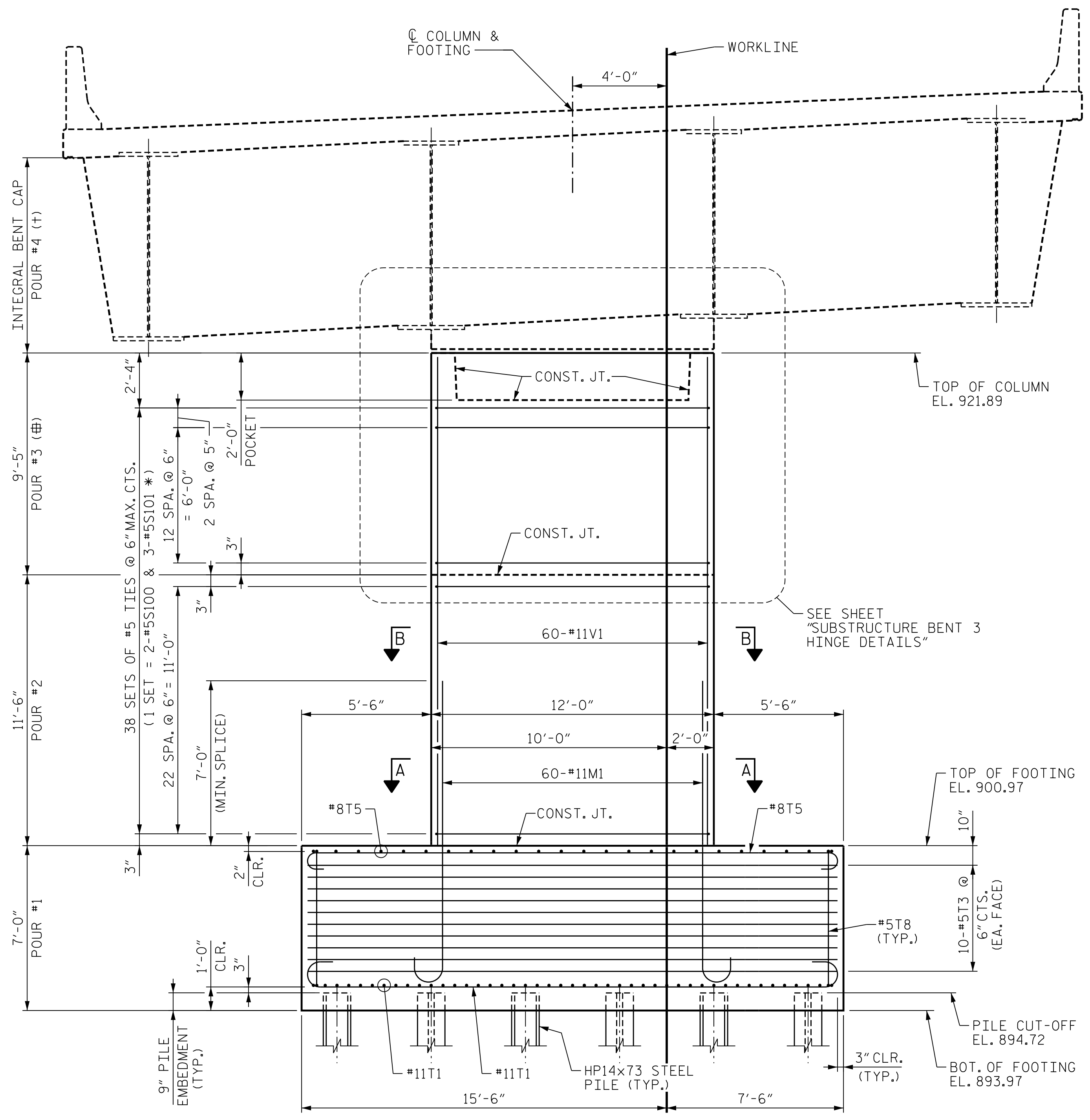
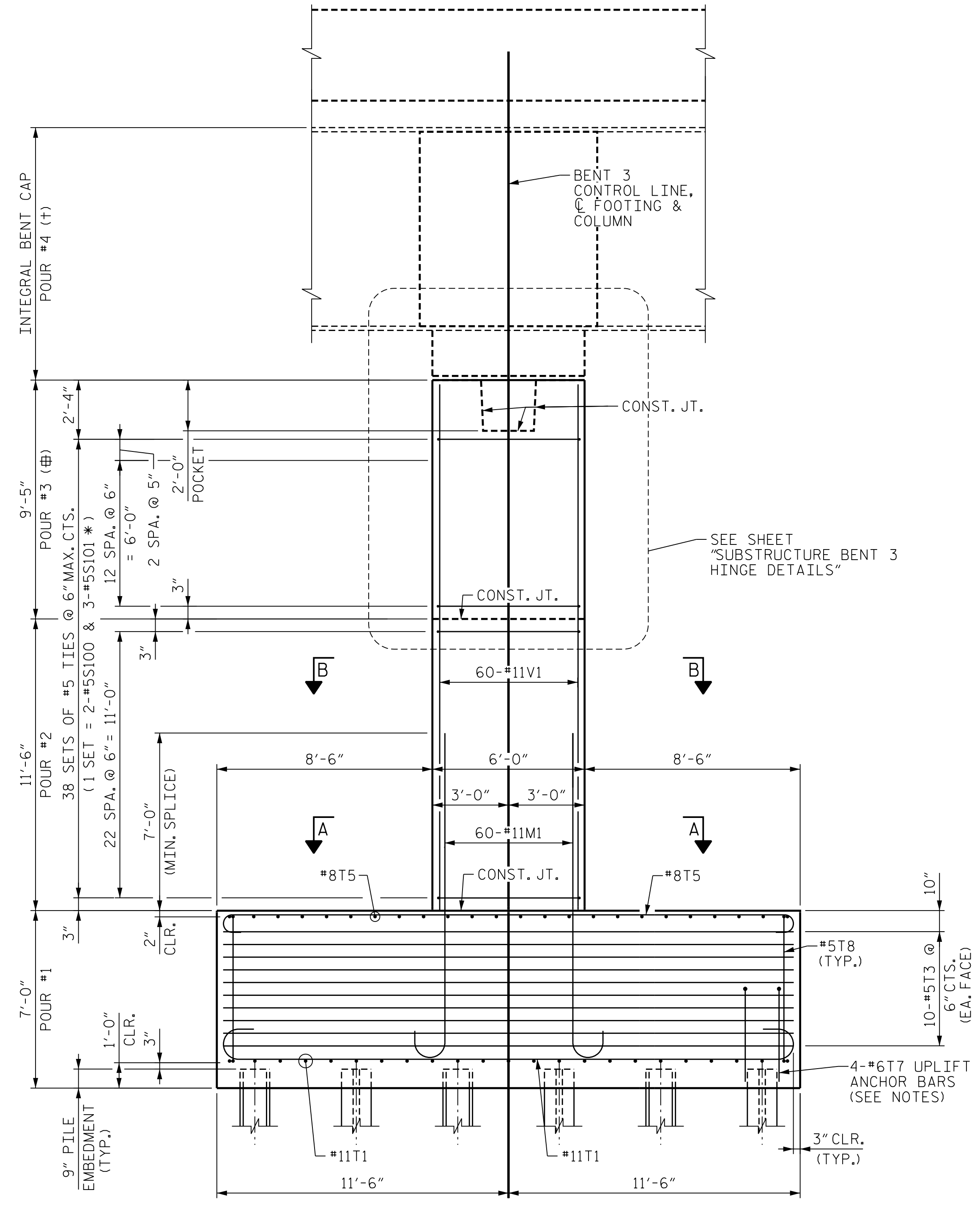


PLOT DRIVER: NCDOT...  
 USER: PETERSON...  
 DATE: 10/14/2021...  
 TIME: 4:06:49 PM



FRONT ELEVATION



END ELEVATION

**NOTES**

FOR DETAILS OF INTEGRAL BENT CAP, SEE "SUBSTRUCTURE BENT 3 BENT CAP DETAILS" SHEETS.

FOR FOOTING PLAN, SECTION A-A AND SECTION B-B, SEE SHEET "SUBSTRUCTURE BENT 3 FOOTING & COLUMN DETAILS".

4-#6T7 UPLIFT ANCHOR BARS AT NOTED PILES - SEE SHEET "SUBSTRUCTURE BENT 3 FOOTING & COLUMN DETAILS" FOR LOCATIONS.

SEE SHEET "SUBSTRUCTURE BENT 1 ELEVATIONS" FOR ADDITIONAL NOTES AND PILE UPLIFT ANCHOR DETAIL.

- ⊕ = TOP OF COLUMN (POUR #3) SHALL BE CAST WITH 6,000 PSI CONCRETE
- † = POUR 4 SHALL BE CAST WITH 6,000 PSI CONCRETE. POUR 4 INCLUDES THE INTEGRAL BENT CAP, HINGE, AND KEY.

\* INVERT ORIENTATION OF ALTERNATE #5S101 TIES

PROJECT NO. U-2579AB  
 FORSYTH COUNTY  
 STATION: 60+66.06 -Y15FLYAC-

SHEET 1 OF 4

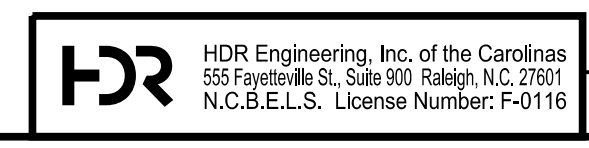
STATE OF NORTH CAROLINA  
 DEPARTMENT OF TRANSPORTATION  
 RALEIGH

**SUBSTRUCTURE BENT 3 ELEVATIONS**



10/15/2021

DES BY: K. OLIVER	DATE: 10/19	DWG BY: B. PETERSON	DATE: 10/19
DES CHK: S. CHAUDHARI	DATE: 10/19	CHK BY: K. OLIVER	DATE: 11/19



DOCUMENT NOT CONSIDERED FINAL UNLESS ALL SIGNATURES COMPLETED

REVISIONS					
NO.	BY:	DATE:	NO.	BY:	DATE:
1	--	--	3	--	--
2	--	--	4	--	--

SHEET NO. S04-101  
 TOTAL SHEETS 144