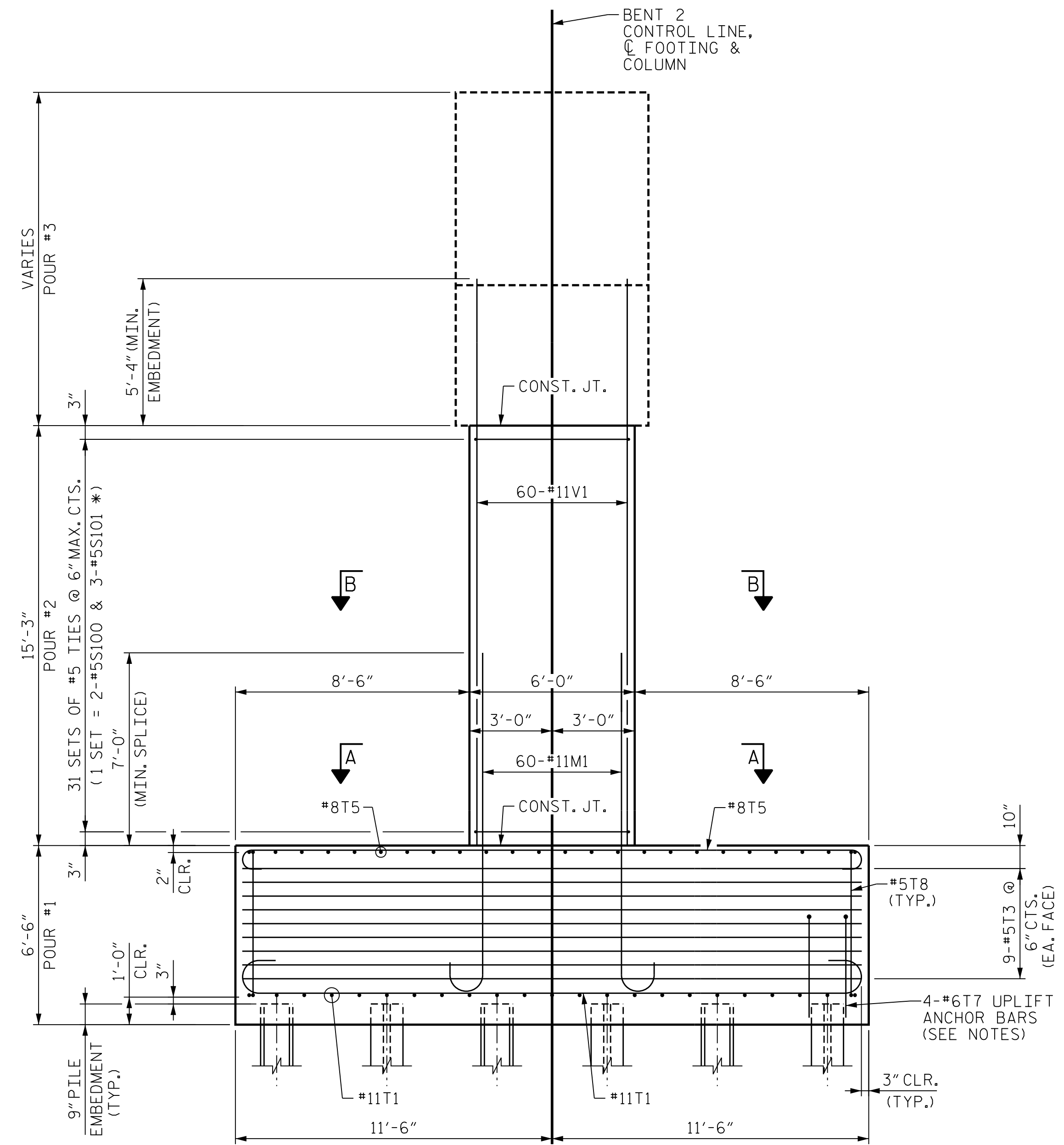


FRONT ELEVATION



END ELEVATION

NOTES

FOR FOOTING PLAN, SECTION A-A AND SECTION B-B, SEE SHEET "SUBSTRUCTURE BENT 2 FOOTING & COLUMN DETAILS".

FOR DETAILS OF BENT 2 BENT CAP, SEE SHEET "SUBSTRUCTURE BENT 2 BENT CAP PLAN AND ELEVATION" AND SHEET "SUBSTRUCTURE BENT 2 BENT CAP DETAILS".

4-#6T7 UPLIFT ANCHOR BARS AT NOTED PILES - SEE SHEET "SUBSTRUCTURE BENT 2 FOOTING & COLUMN DETAILS" FOR LOCATIONS.

SEE SHEET "SUBSTRUCTURE BENT 1 ELEVATIONS" FOR ADDITIONAL NOTES AND PILE UPLIFT ANCHOR DETAIL.

* INVERT ORIENTATION OF ALTERNATE #5S101 TIES

PROJECT NO. U-2579AB
 FORSYTH COUNTY
 STATION: 60+66.06 -Y15FLYAC-
 SHEET 1 OF 5

STATE OF NORTH CAROLINA
 DEPARTMENT OF TRANSPORTATION
 RALEIGH

SUBSTRUCTURE BENT 2 ELEVATIONS



Domenic A. Coletti 10/15/2021



DOCUMENT NOT CONSIDERED FINAL UNLESS ALL SIGNATURES COMPLETED

REVISIONS						SHEET NO. S04-095 TOTAL SHEETS 144
NO.	BY:	DATE:	NO.	BY:	DATE:	
1	--	--	3	--	--	
2	--	--	4	--	--	

PLOT DRIVER: NCDOT... PENTABLE: NCDOT... STRUCTURES DEFAULT PEN.tbl
 USER: PPETERSO DATE: 10/14/2021 TIME: 4:05:58 PM
 FILE: ...SUBSTR

DES BY: J. CABABE	DATE: 10/19	DWG BY: B. PETERSON	DATE: 10/19
DES CHK: S. CHAUDHARI	DATE: 10/19	CHK BY: N. LIU	DATE: 11/19