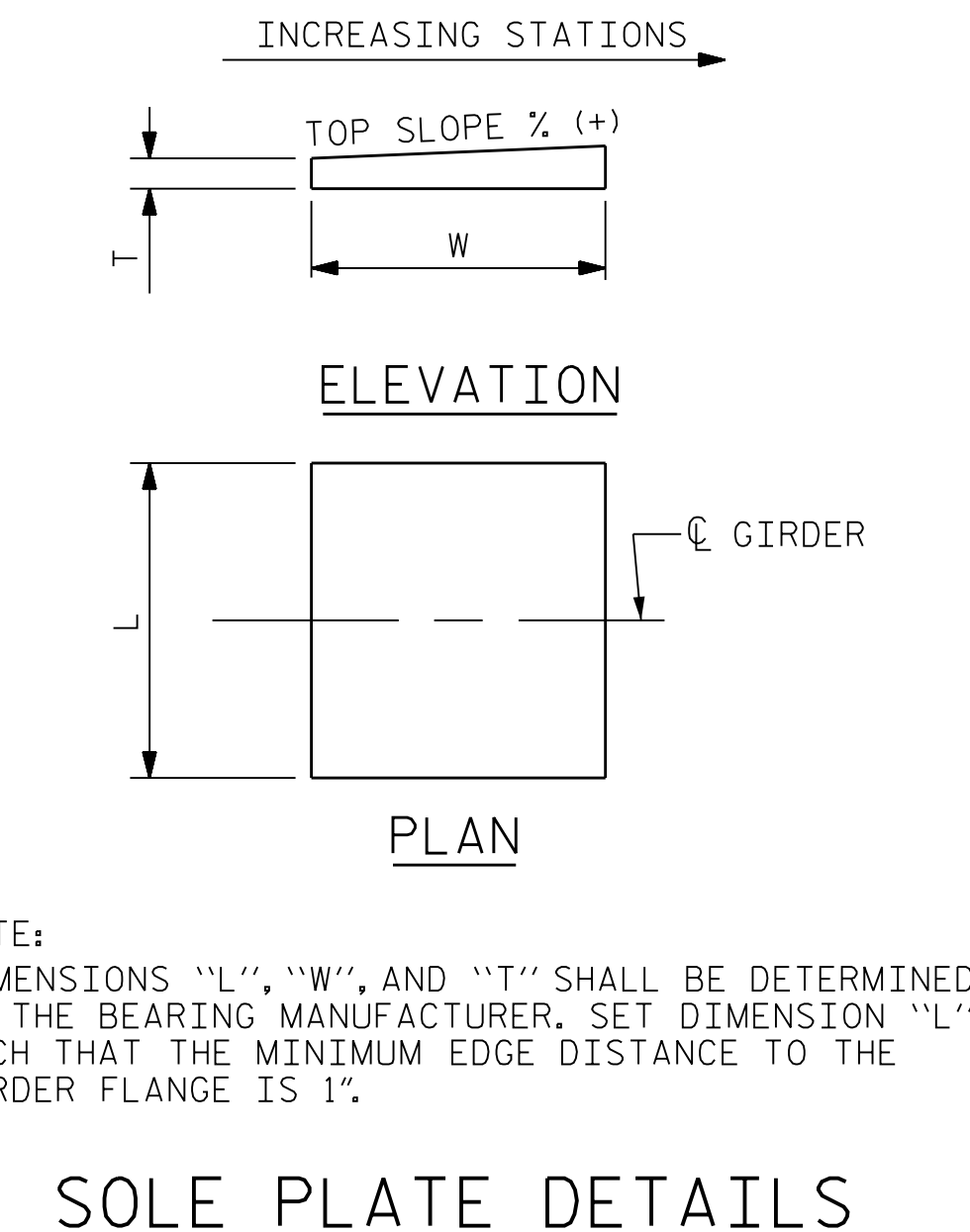
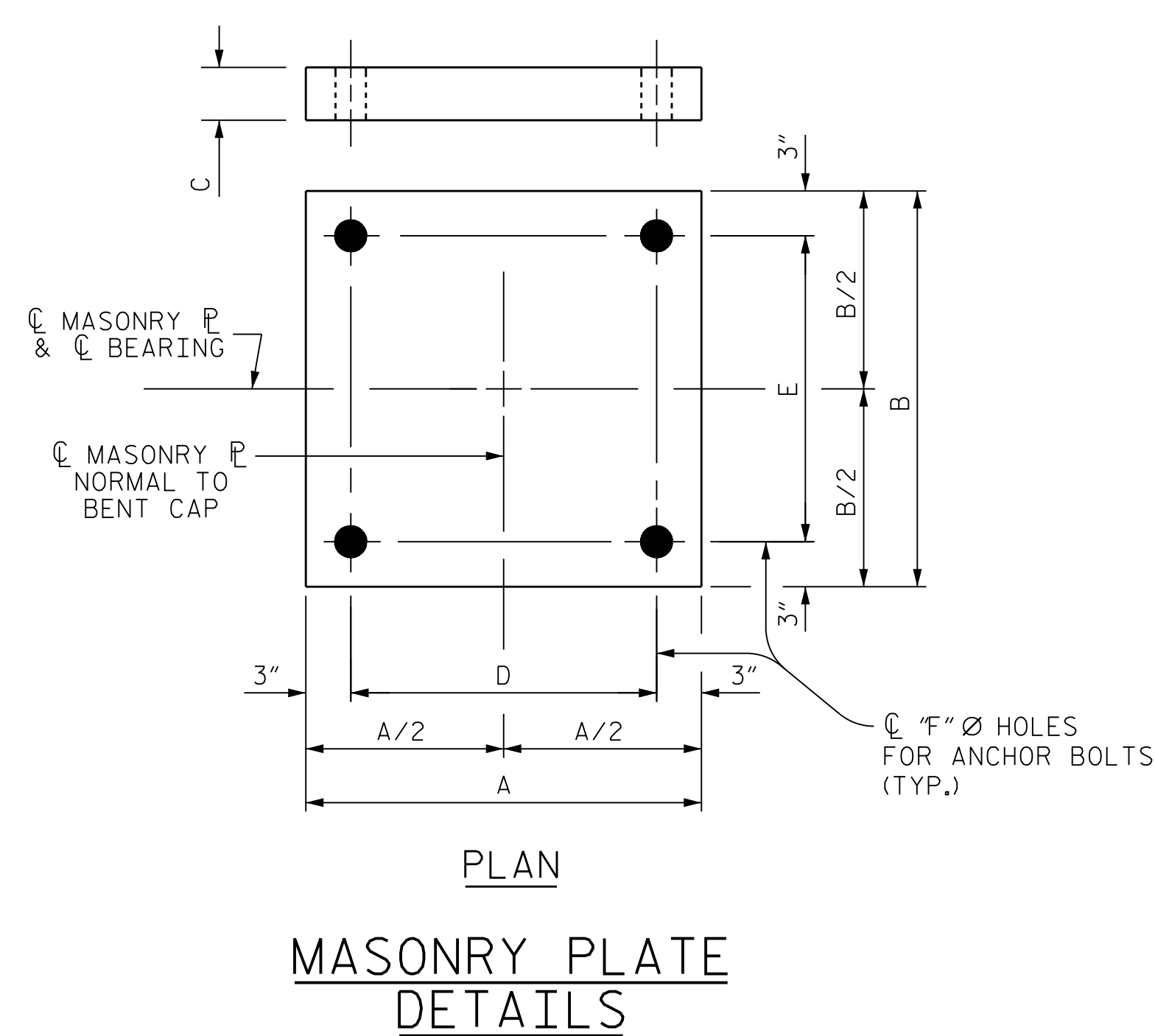


DESIGNATIONS		LOCATION	NUMBER OF BEARINGS	DIMENSIONS											LOADS AND MOVEMENT					
BEARINGS	MASONRY			BEARING	MASONRY PLATE						SOLE PLATE	ANCHOR BOLT DIAMETER (IN.)	ANCHOR BOLT PROJECTION	TOTAL ANCHOR BOLT LENGTH	4" Ø STD. PIPE LENGTH	UNFACTORED VERTICAL LOAD (KIPS)			FACTORED HORIZONTAL LOAD (KIPS)	** ONE-WAY MOVEMENT
					H	A	B	C	D	E						F	TOP SLOPE (%)	DC		
DB1 (EXP.)	M1	END BENT 1	4	5 5/8"	2'-1 1/2"	2'-1 1/2"	3/4"	1'-7 1/2"	1'-7 1/2"	1 15/16"	- 0.4937	1 1/2"	2 1/8"	1'-6"	1'-3 1/4"	123	16	127	51	4 1/8"
DB2 (EXP.)	M2	BENT 1	4	7 3/4"	2'-8 1/2"	2'-8 1/2"	1"	2'-2 1/2"	2'-2 1/2"	1 15/16"	- 0.4937	1 1/2"	2 1/8"	1'-6 1/4"	1'-3 1/4"	365	52	239	135	3 7/8"
DB3 (EXP.)	M3	BENT 2	4	8 3/4"	3'-0"	3'-0"	1"	2'-6"	2'-6"	2 7/16"	- 0.4937	2"	2 1/2"	1'-10"	1'-6 1/4"	542	71	275	188	1 3/16"
DB4 (EXP.)	M3	BENT 4	4	8 3/4"	3'-0"	3'-0"	1"	2'-6"	2'-6"	2 7/16"	- 0.4937	2"	2 1/2"	1'-10"	1'-6 1/4"	510	70	270	179	1 9/16"
DB5 (EXP.)	M4	BENT 5 BK	4	6"	2'-3"	2'-3"	3/4"	1'-9"	1'-9"	1 15/16"	- 0.4937	1 1/2"	2 1/8"	1'-6"	1'-3 1/4"	170	22	131	65	2 5/16"
DB6 (EXP.)	M4	BENT 5 AHD	4	6"	2'-3"	2'-3"	3/4"	1'-9"	1'-9"	1 15/16"	- 0.4937	1 1/2"	2 1/8"	1'-6"	1'-3 1/4"	159	22	136	63	5 3/4"
DB7 (EXP.)	M5	BENT 6	4	8 7/8"	3'-2"	3'-2"	1 1/4"	2'-8"	2'-8"	2 7/16"	- 0.4937	2"	2 1/2"	1'-10"	1'-6 1/4"	559	72	284	194	4 3/8"
DB8 (EXP.)	M6	BENT 7	4	9 1/2"	3'-4"	3'-4"	1 1/4"	2'-10"	2'-10"	2 7/16"	- 0.4937	2"	2 1/2"	1'-10"	1'-6 1/4"	664	81	301	224	2 5/16"
DB9 (FIXED)	M7	BENT 8	4	7 3/4"	2'-8"	2'-8"	1 1/4"	2'-2"	2'-2"	2 7/16"	- 0.4937	2"	2 1/2"	1'-10"	N/A	580	74	290	200	0"
DB10 (FIXED)	M8	BENT 9	4	7 1/8"	2'-4 1/2"	2'-4 1/2"	1"	1'-10 1/2"	1'-10 1/2"	2 7/16"	- 0.4937	2"	2 1/2"	1'-10"	N/A	419	57	254	151	0"
DB11 (EXP.)	M1	END BENT 2	4	5 5/8"	2'-1 1/2"	2'-1 1/2"	3/4"	1'-7 1/2"	1'-7 1/2"	1 15/16"	- 0.4937	1 1/2"	2 1/8"	1'-6"	1'-3 1/4"	133	18	122	53	1 3/16"

** "ONE-WAY MOVEMENT" REPRESENTS THE FULL MOVEMENT RANGE EXPECTED TO OCCUR OVER A TEMPERATURE RANGE FROM 10° F TO 110° F. THE BEARING SOLE PLATE AND UPPER SLIDING SURFACE SHOULD BE CENTERED ON THE BEARING AT 60° F. SEE TABLE FOR "PLATE SETTING DATA" FOR SETTING DATA FOR OTHER TEMPERATURES.

▲ ANCHOR BOLT PROJECTION IS MEASURED ABOVE TOP OF BEARING SEAT CONCRETE.



NOTE: DIMENSIONS "L", "W", AND "T" SHALL BE DETERMINED BY THE BEARING MANUFACTURER. SET DIMENSION "L" SUCH THAT THE MINIMUM EDGE DISTANCE TO THE GIRDER FLANGE IS 1".

PROJECT NO. U-2579AB
FORSYTH COUNTY
 STATION: 60+66.06 -Y15FLYAC-
 SHEET 2 OF 3

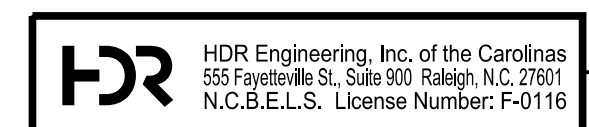


STATE OF NORTH CAROLINA
 DEPARTMENT OF TRANSPORTATION
 RALEIGH

**SUPERSTRUCTURE
 DISC BEARING
 DETAILS**

REVISIONS						SHEET NO.	
NO.	BY:	DATE:	NO.	BY:	DATE:	S04-061	
1	--	--	3	--	--	TOTAL SHEETS 144	
2	--	--	4	--	--		

DES BY: G. SCHMITZ DATE: 07/19 DWG BY: B. PETERSON DATE: 07/19
 DES CHK: D. COLETTI DATE: 07/19 CHK BY: D. OLDS DATE: 11/19



10/15/2021
 DOCUMENT NOT CONSIDERED FINAL
 UNLESS ALL SIGNATURES COMPLETED

PLOT DRIVER: NCDOT_pdf_color_eng-50.ppt
 USER: PPETERSO DATE: 10/14/2021
 PENTABLE: NCDOT_STRUCTURES_DEFAULT_PEN.tbl
 TIME: 4:02:18 PM
 FILE: ... \SUPERS