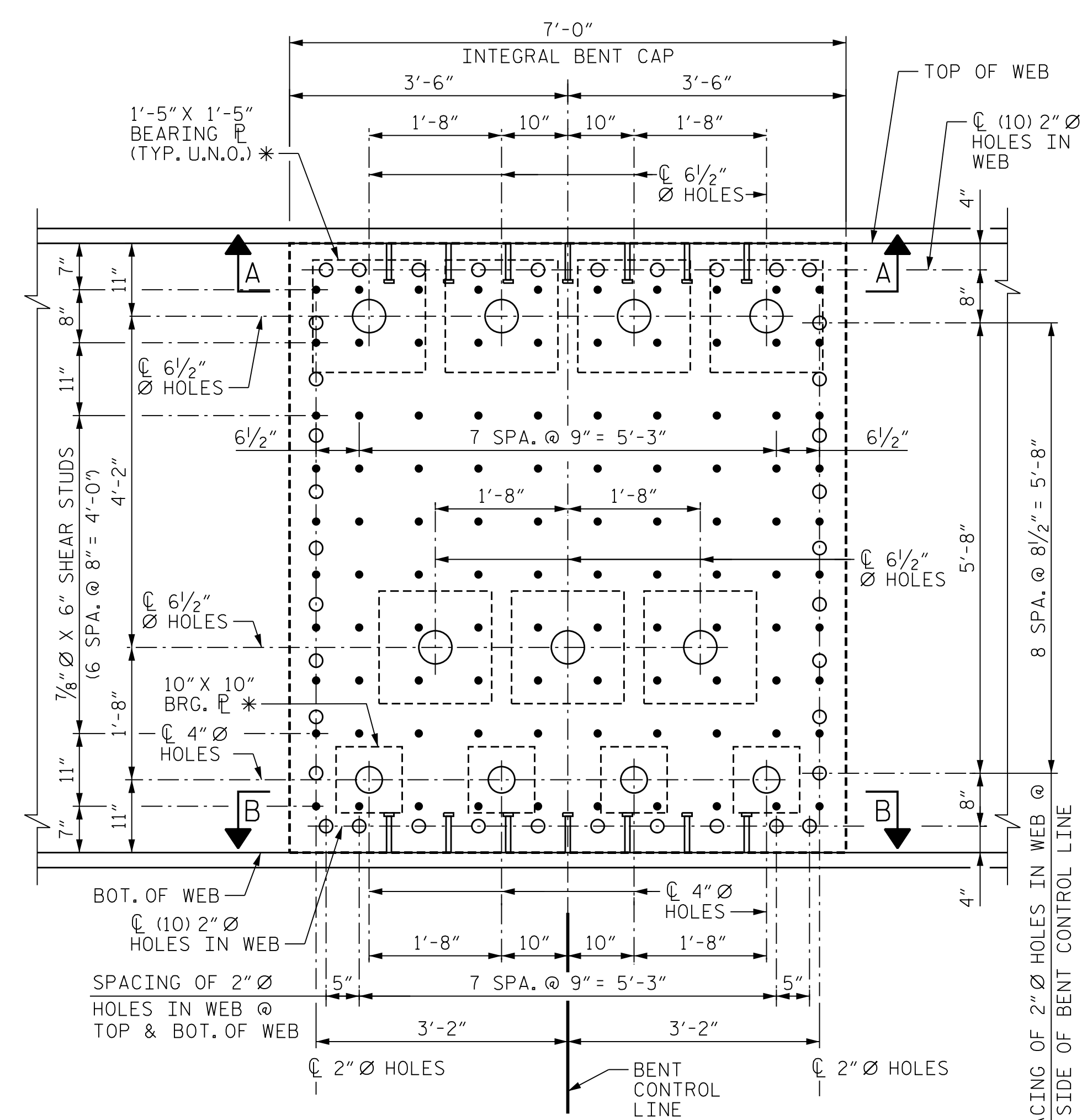
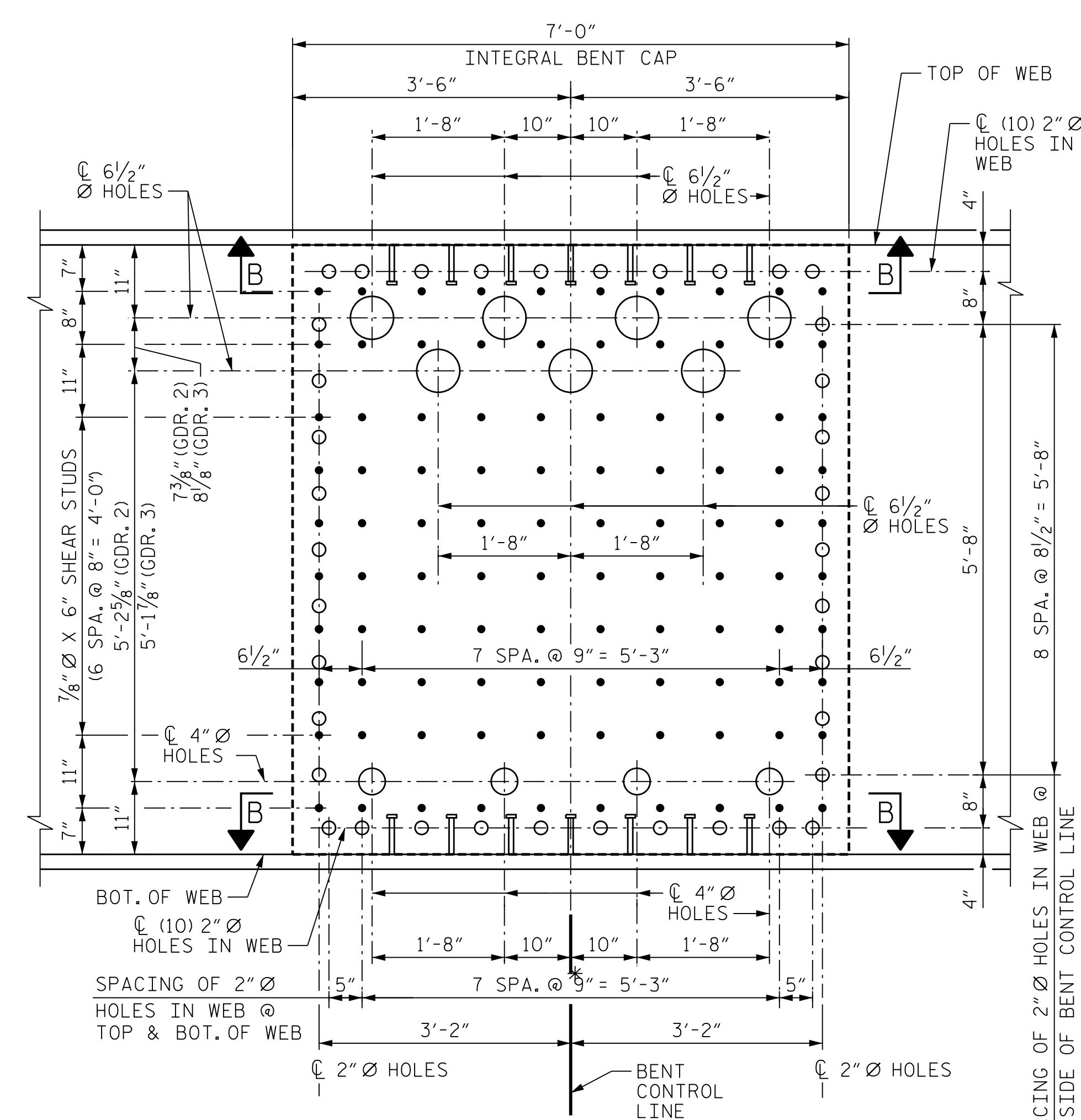


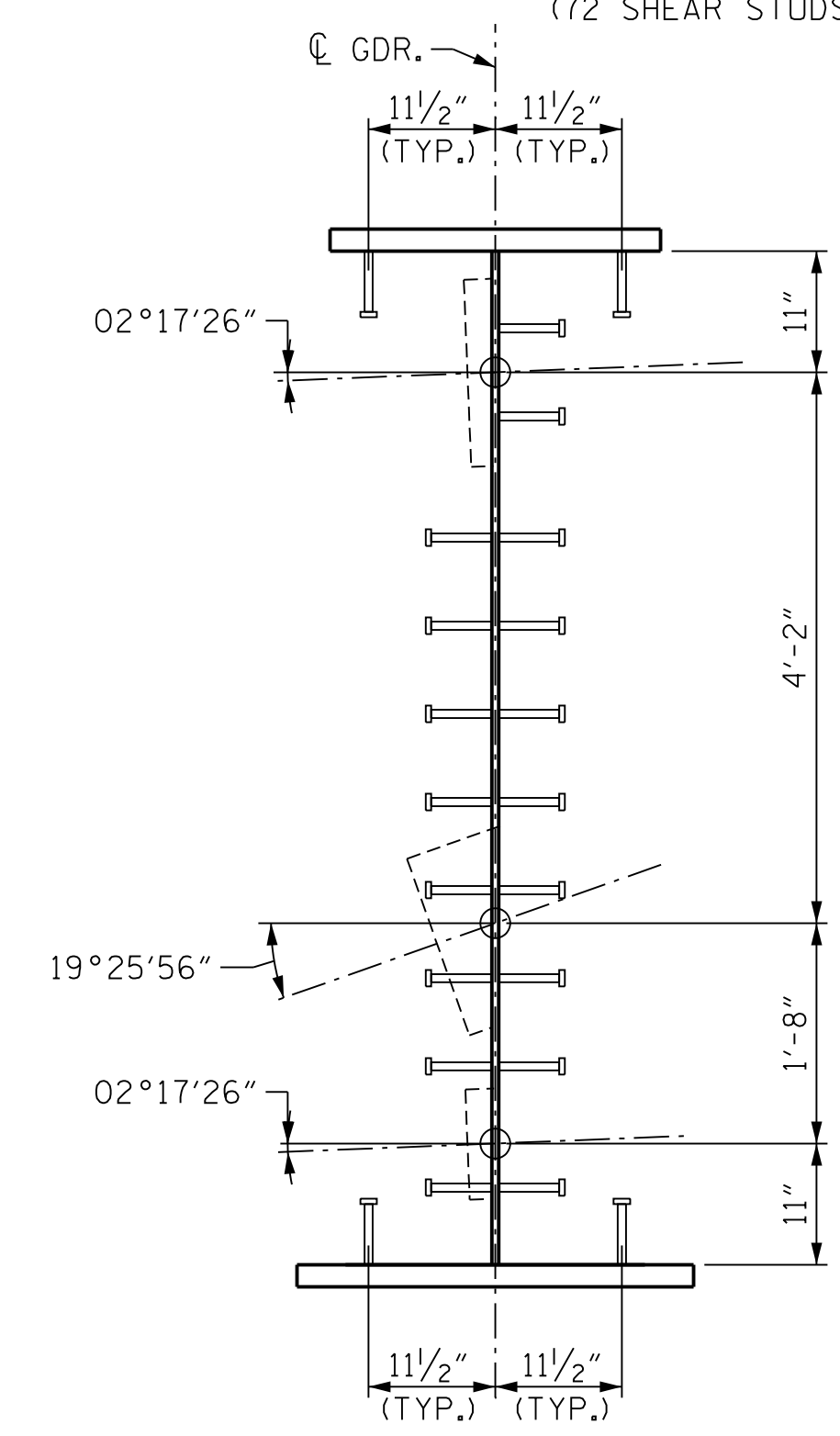
**GIRDERS 1 & 4 (EXTERIOR FACE)**  
(72 SHEAR STUDS REQ'D PER FACE)



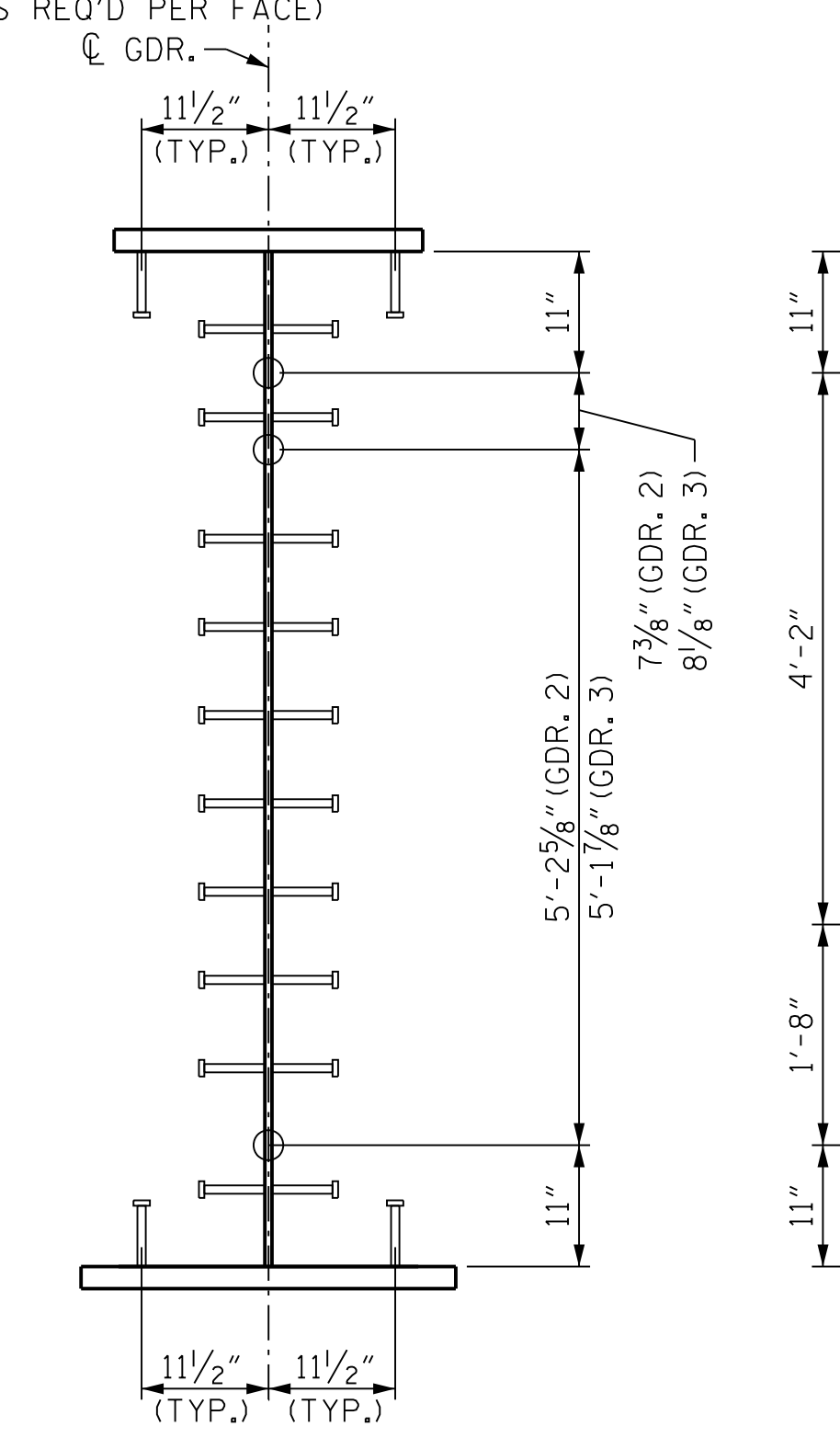
**GIRDERS 1 & 4 (INTERIOR FACE)**  
(114 SHEAR STUDS REQ'D PER FACE)



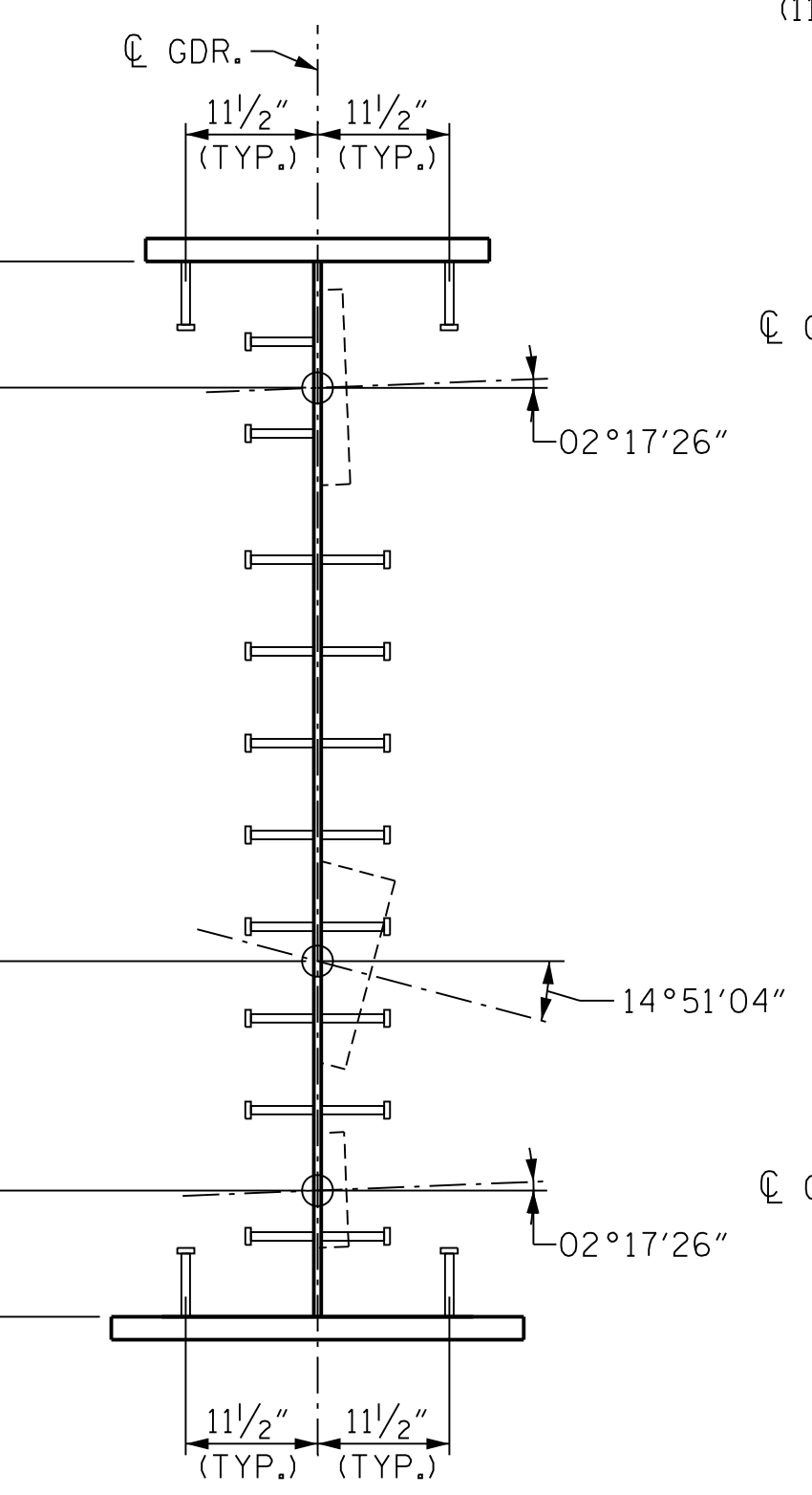
**GIRDERS 2 & 3 (BOTH FACES)**  
(114 SHEAR STUDS REQ'D PER FACE)



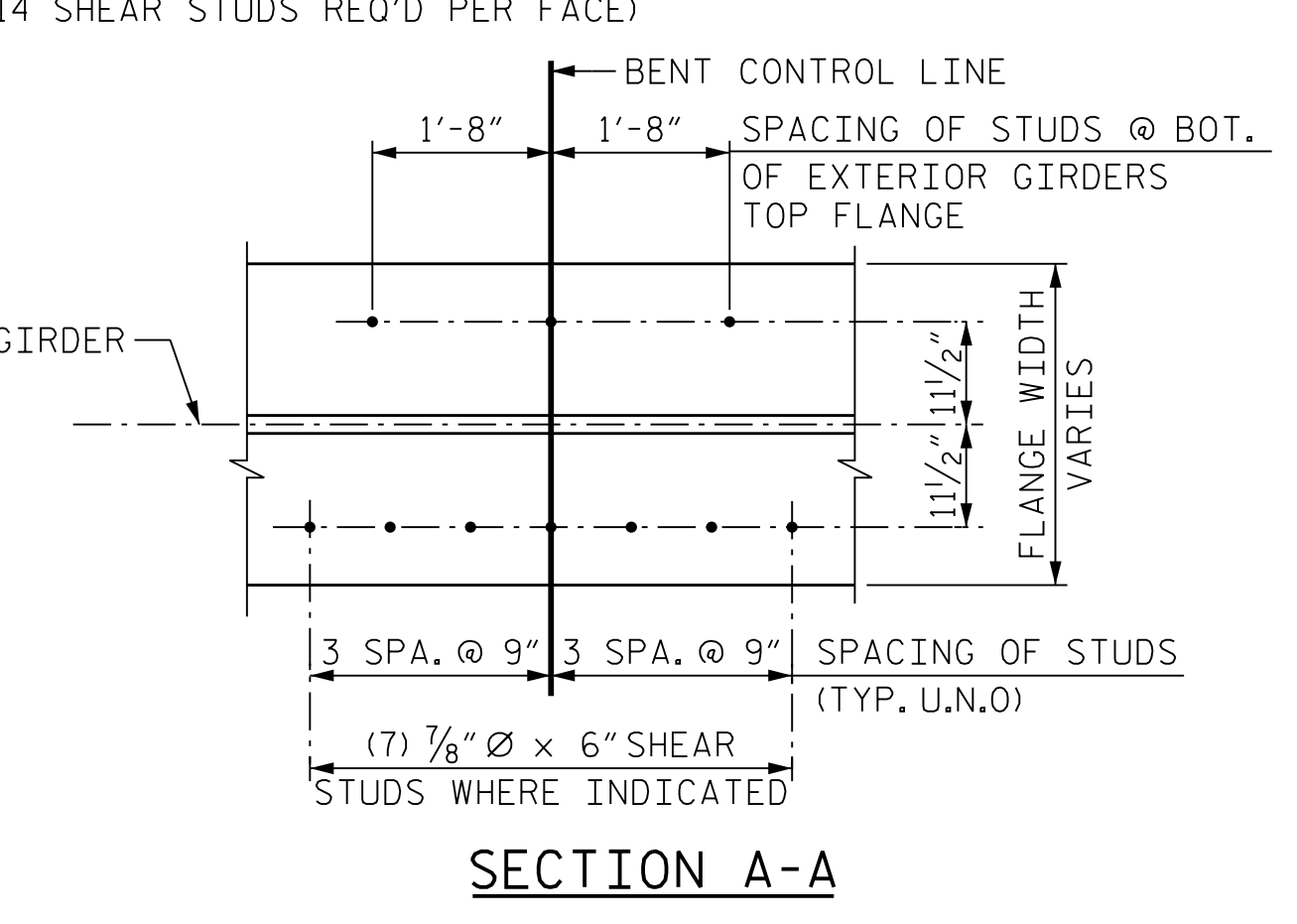
**GIRDER 1**



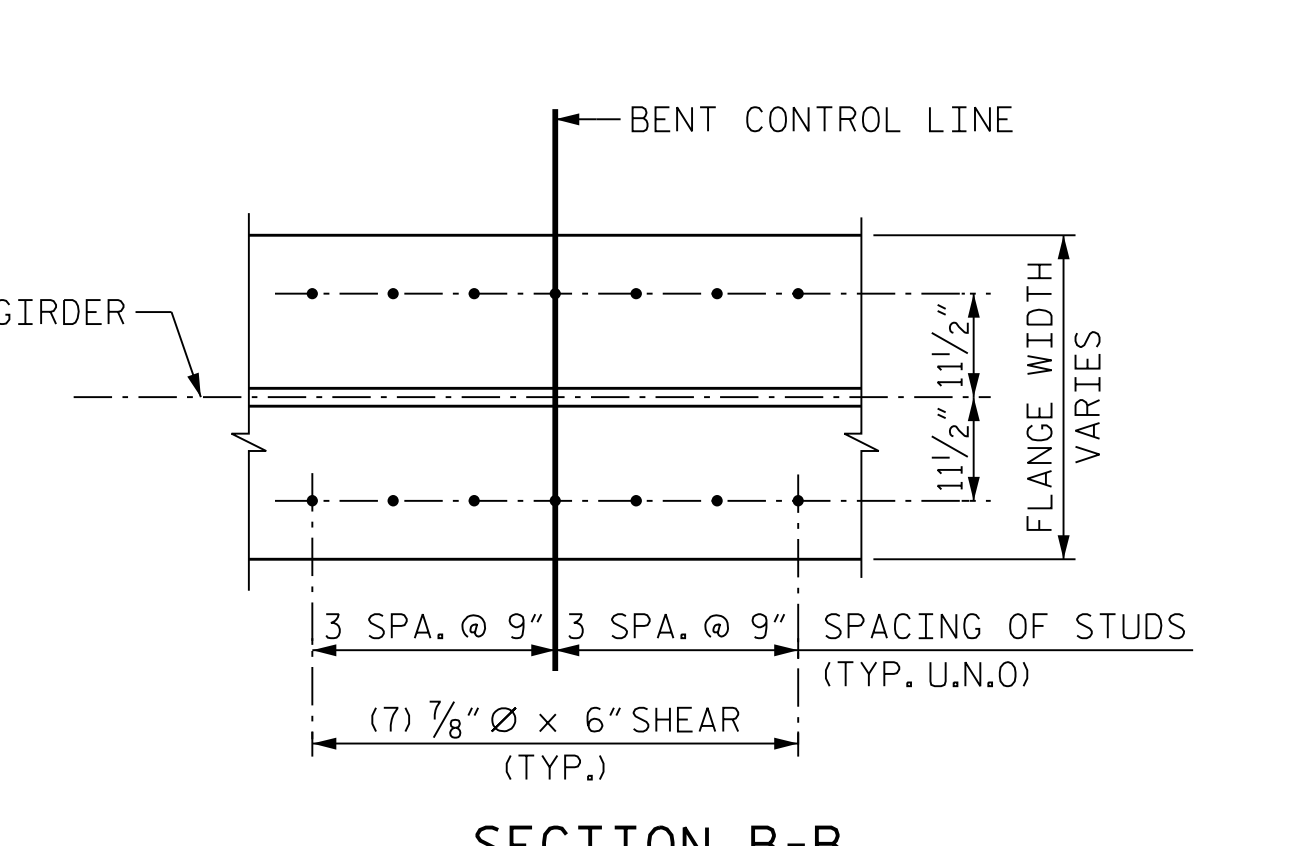
**GIRDERS 2 & 3**



**GIRDER 4**



**SECTION A-A**



**SECTION B-B**

**NOTES**

- \* THE ITEMS LISTED BELOW SHALL BE VERIFIED BY THE POST-TENSIONING SUPPLIER PRIOR TO FABRICATION:
  - 1. SIZE, SHAPE & THICKNESS OF BEARING PLATE.
  - 2. DIAMETER OF THE BEARING PLATE HOLES.
  - 3. DIAMETER & LOCATION OF WEB HOLES.
- LOCATIONS OF SHEAR STUDS ON THE WEB MAY BE SHIFTED SLIGHTLY TO PROVIDE ADEQUATE CLEARANCE TO BEARING PLATES AND WEB HOLES, MAINTAINING A MINIMUM CLEAR DISTANCE OF 1/2" FROM ALL EDGES.
- PERMISSIBLE TO ADJUST SHEAR STUD LOCATIONS SLIGHTLY TO MAINTAIN 2" EDGE DISTANCE FROM HOLES PROVIDED IN GIRDER WEBS FOR POST-TENSIONING DUCT PENETRATIONS.
- SEE GIRDER ELEVATIONS FOR SPACING OF SHEAR STUDS ON TOP OF THE TOP FLANGE.
- FOR ADDITIONAL NOTES ON POST-TENSIONING AND ANCHORAGE, SEE "SCHEMATIC SEQUENCE OF CONSTRUCTION AND NOTES INTEGRAL BENTS 3" SHEET.
- HOLES IN WEB MAY NEED TO BE A GREATER DIAMETER TO ACCEPT BEARING PLATE TO TRUMPET WELD.

PROJECT NO. U-2579AB  
 FORSYTH COUNTY  
 STATION: 60+66.06 -Y15FLYAC-

SHEET 3 OF 3

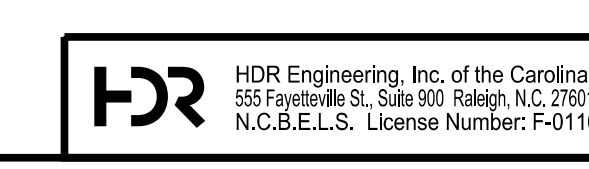


10/15/2021

STATE OF NORTH CAROLINA DEPARTMENT OF TRANSPORTATION RALEIGH					
SUPERSTRUCTURE GIRDER DETAILS UNIT 1					
REVISIONS					
NO.	BY:	DATE:	NO.	BY:	DATE:
1	--	--	3	--	--
2	--	--	4	--	--

PLOT DRIVER: NCDOT\_pdf\_color\_eng-50.ppt  
 USER: PPEIERSO  
 DATE: 10/14/2021  
 TIME: 4:01:01 PM  
 FILE: ... \SUPERS

DES BY: S. JING	DATE: 11/19	DWG BY: B. PETERSON	DATE: 11/19
DES CHK: J. CABABE	DATE: 11/19	CHK BY: J. CABABE	DATE: 11/19



DOCUMENT NOT CONSIDERED FINAL  
 UNLESS ALL SIGNATURES COMPLETED

SHEET NO. 504-036  
 TOTAL SHEETS 144