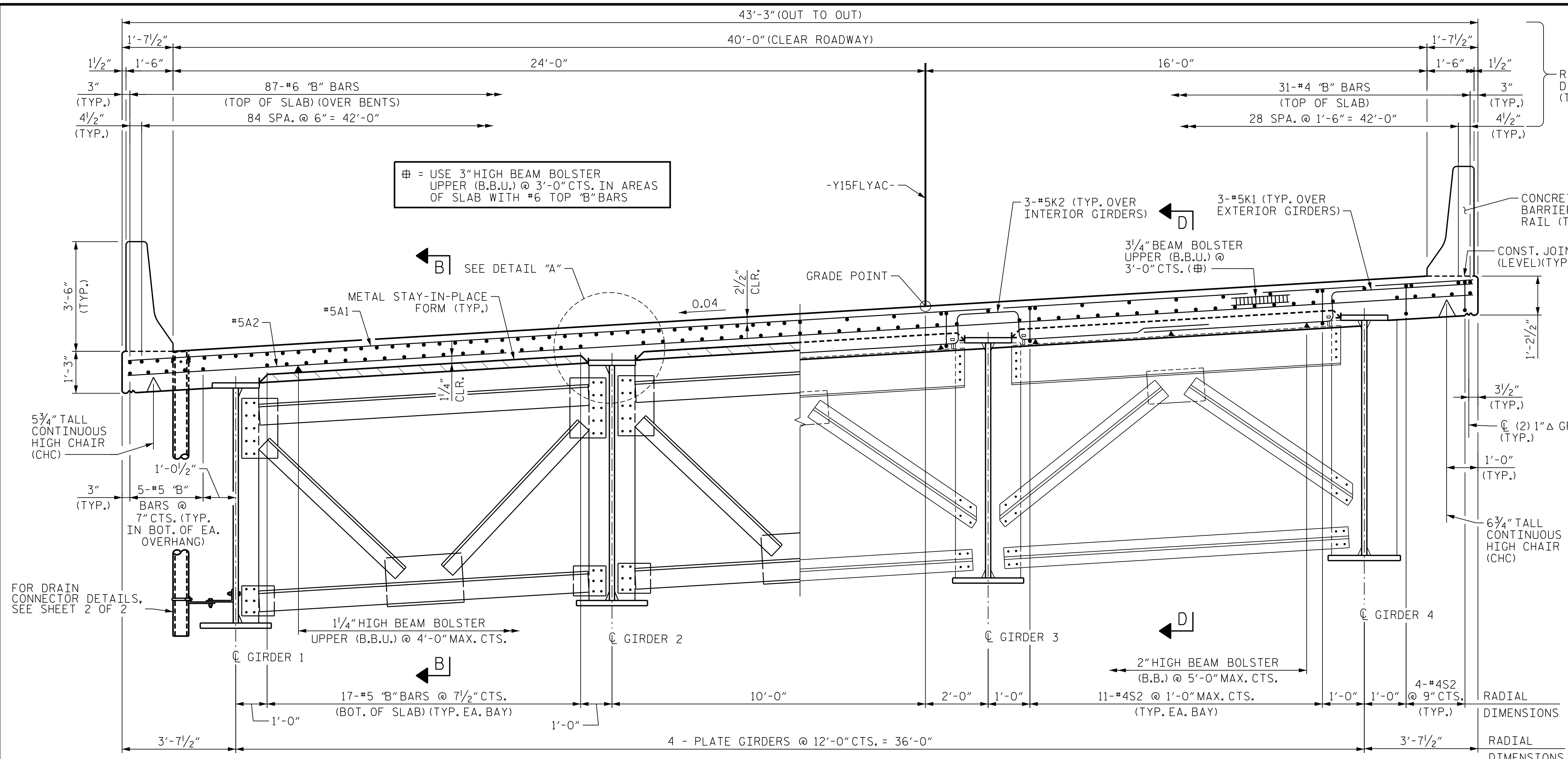


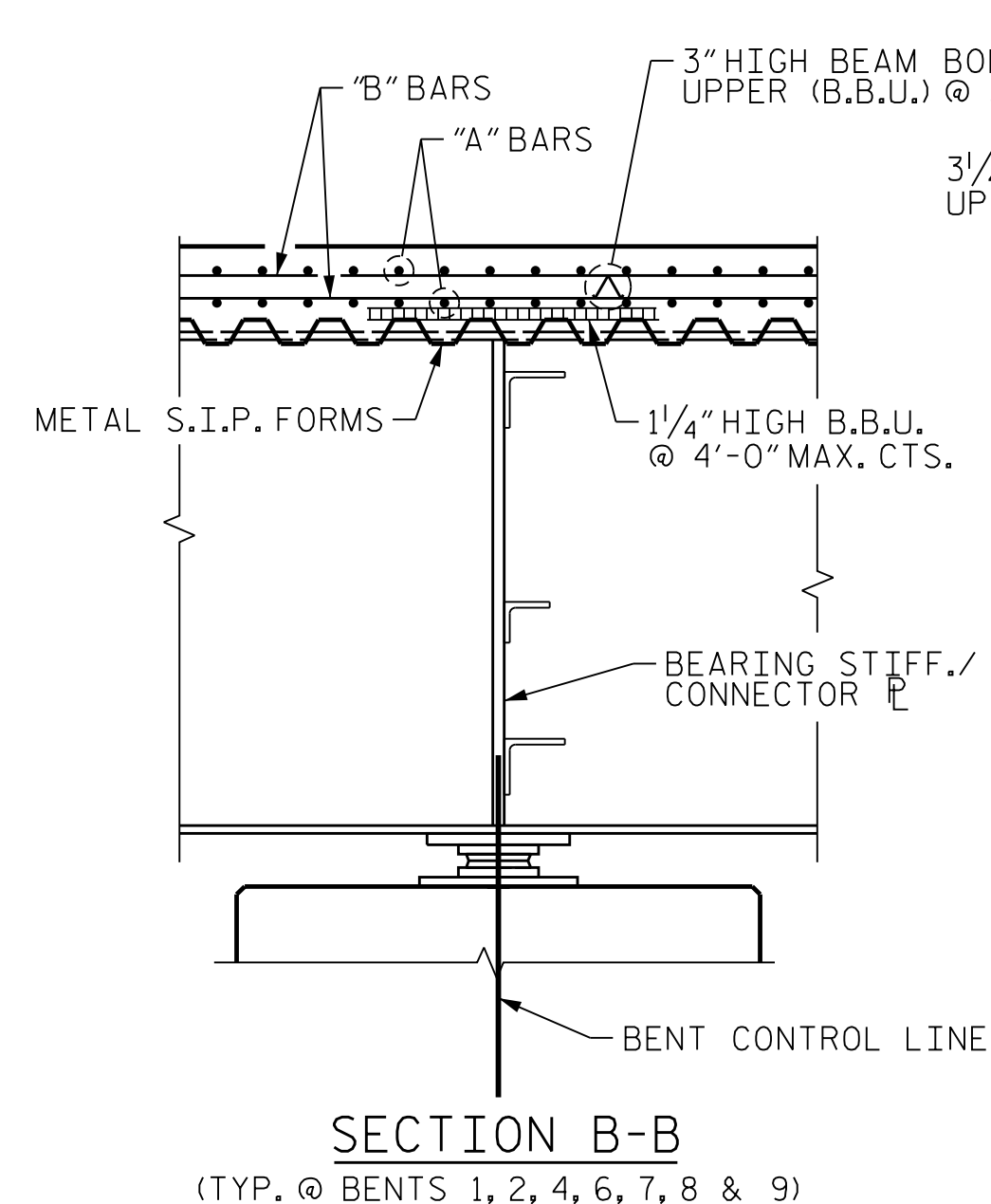
Docusign Envelope ID: 228B5C22-79CA-4B09-870D-1104FCE02AF4
 PLOT DRIVER: NCDOT.pdf_color_eng-50dpi
 USER: PPETERSO DATE: 10/14/2021
 FILE: ... \SUPERS
 PENTABLE: NCDOT_STRUCTURES_DEFAULT_PEN.tbl
 TIME: 3:59:22 PM



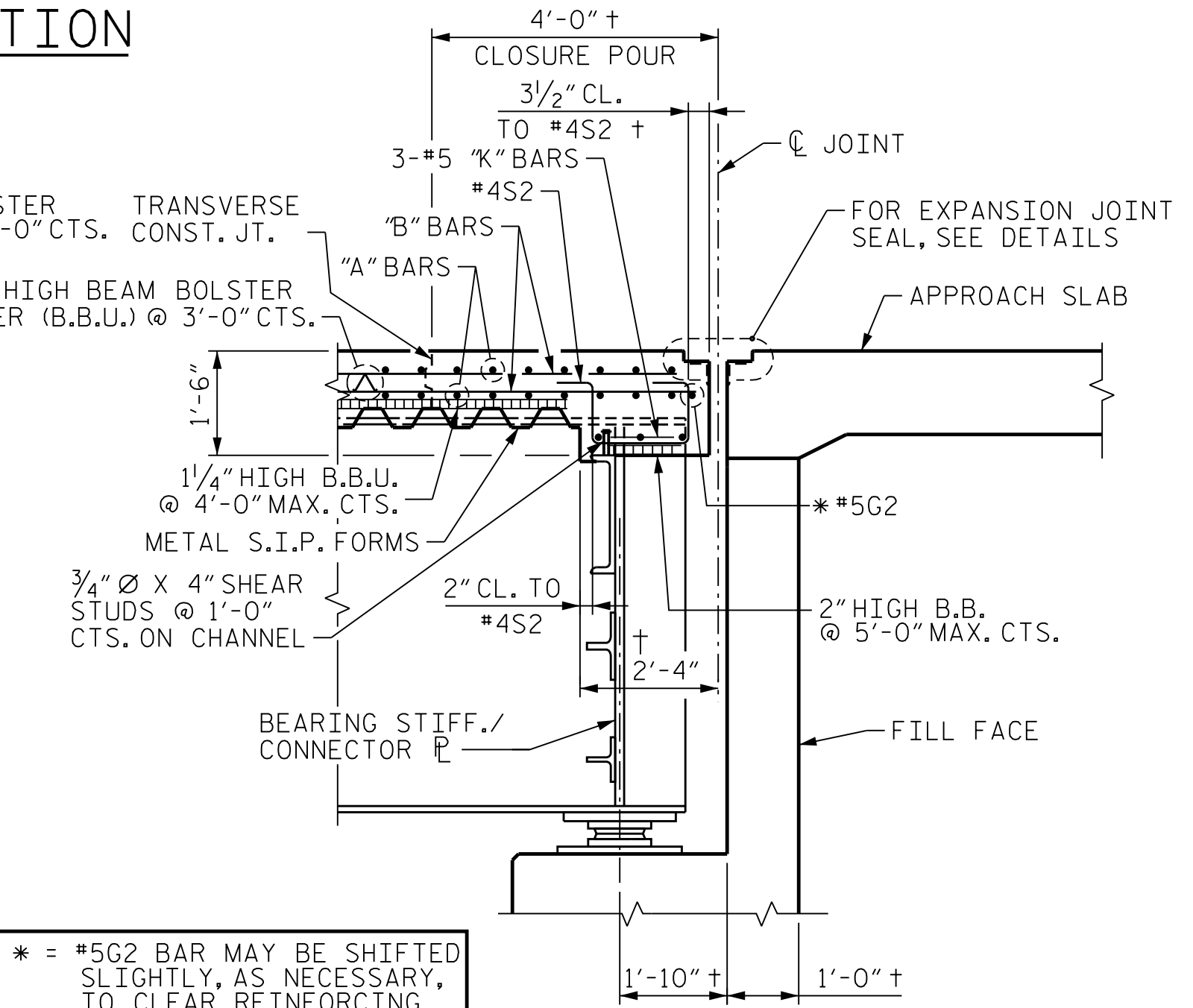
SECTION AT INTERMEDIATE & BENT DIAPHRAGM
(TYP. @ BENTS 1, 2, 4, 6, 7, 8 & 9)

SECTION AT END BENT DIAPHRAGM
(@ END BENT 2)

TYPICAL SECTION



SECTION B-B
(TYP. @ BENTS 1, 2, 4, 6, 7, 8 & 9)



SECTION D-D
(@ END BENT 2)

* = #5G2 BAR MAY BE SHIFTED SLIGHTLY, AS NECESSARY, TO CLEAR REINFORCING STEEL & STIRRUPS
 † = DISTANCE NORMAL TO JOINT

NOTES

PROVIDE 1/4" HIGH BEAM BOLSTER UPPER (BBU) AT 4'-0" MAX. CENTERS ATOP THE METAL STAY-IN-PLACE FORMS TO SUPPORT THE BOTTOM MAT OF "A" BARS. WHEN USING REMOVABLE FORMS, PROVIDE CONTINUOUS HIGH CHAIRS FOR METAL DECK (C.H.C.M.) @ 4'-0" MAX. CENTERS WITH HEIGHT TO SUPPORT THE BOTTOM MAT OF "A" BARS A CLEAR DISTANCE OF 2 1/2" ABOVE THE TOP OF THE REMOVABLE FORM.

FOR EXPANSION JOINT SEALS, SEE SPECIAL PROVISIONS.

METAL STAY-IN-PLACE FORMS SHALL NOT BE WELDED TO GIRDER FLANGES IN THE ZONES REQUIRING CHAPPY V-NOTCH TEST. SEE "SUPERSTRUCTURE GIRDER DETAILS" SHEETS.

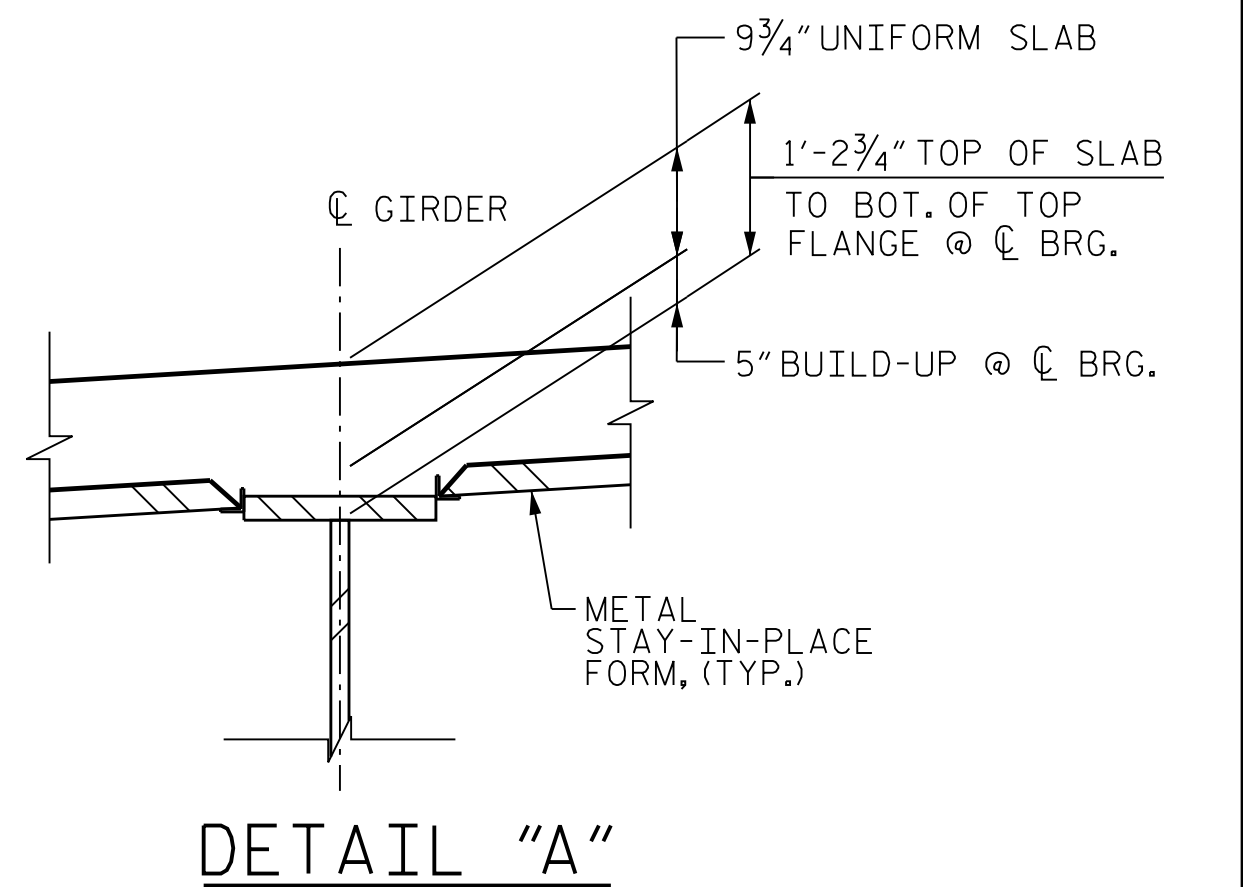
PREVIOUSLY CAST CONCRETE IN A CONTINUOUS UNIT SHALL HAVE ATTAINED A MINIMUM COMPRESSIVE STRENGTH OF 3,000 PSI BEFORE ADDITIONAL CONCRETE IS CAST IN THE UNIT.

STRUCTURAL STEEL ERECTION IN A CONTINUOUS UNIT SHALL BE COMPLETE BEFORE FALSEWORK OR FORMS ARE PLACED ON THE UNIT.

THE CONTRACTOR MAY, WHEN NECESSARY, PROPOSE A SCHEME FOR AVOIDING INTERFERENCE BETWEEN METAL STAY-IN-PLACE FORM SUPPORTS OR FORMS AND BEAM/GIRDERS STIFFENERS OR CONNECTOR PLATES. THE PROPOSAL SHALL BE INDICATED, AS APPROPRIATE, ON EITHER THE STEEL WORKING DRAWINGS OR THE METAL STAY-IN-PLACE FORM WORKING DRAWINGS.

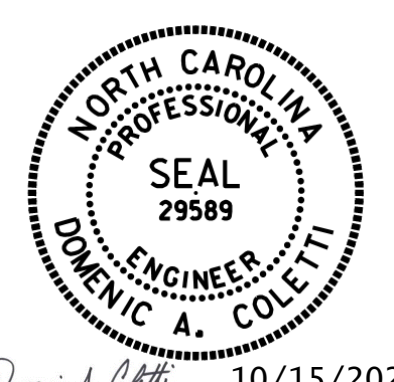
FOR TYPICAL SECTION INFORMATION AT BENT 3, SEE "SUBSTRUCTURE BENT 3 BENT CAP DETAILS" SHEETS.

BARRIER RAIL IN A CONTINUOUS UNIT SHALL NOT BE CAST UNTIL ALL SLAB CONCRETE IN THAT UNIT HAS BEEN CAST AND HAS REACHED A MINIMUM COMPRESSIVE STRENGTH OF 3,000 PSI.



DETAIL "A"

PROJECT NO. U-2579AB
 FORSYTH COUNTY
 STATION: 60+66.06 -Y15FLYAC-
 SHEET 1 OF 2



10/15/2021

DES BY: I. ANDREWS	DATE: 07/19	DWG BY: B. PETERSON	DATE: 07/19
DES CHK: M. NEIHEISEL	DATE: 06/19	CHK BY: G. SCHMITZ	DATE: 11/19



DOCUMENT NOT CONSIDERED FINAL UNLESS ALL SIGNATURES COMPLETED

STATE OF NORTH CAROLINA DEPARTMENT OF TRANSPORTATION RALEIGH					
SUPERSTRUCTURE TYPICAL SECTION					
REVISIONS					
NO.	BY:	DATE:	NO.	BY:	DATE:
1	--	--	3	--	--
2	--	--	4	--	--

SHEET NO. S04-018	TOTAL SHEETS 144
-------------------	------------------