

HORIZONTAL CLEARANCE DIMENSIONS

Ⓢ 23'-8" MIN. HORIZ. CLEAR TO FACE OF COLUMN ▲

HORIZONTAL CURVE DATA -Y15FLYAC-

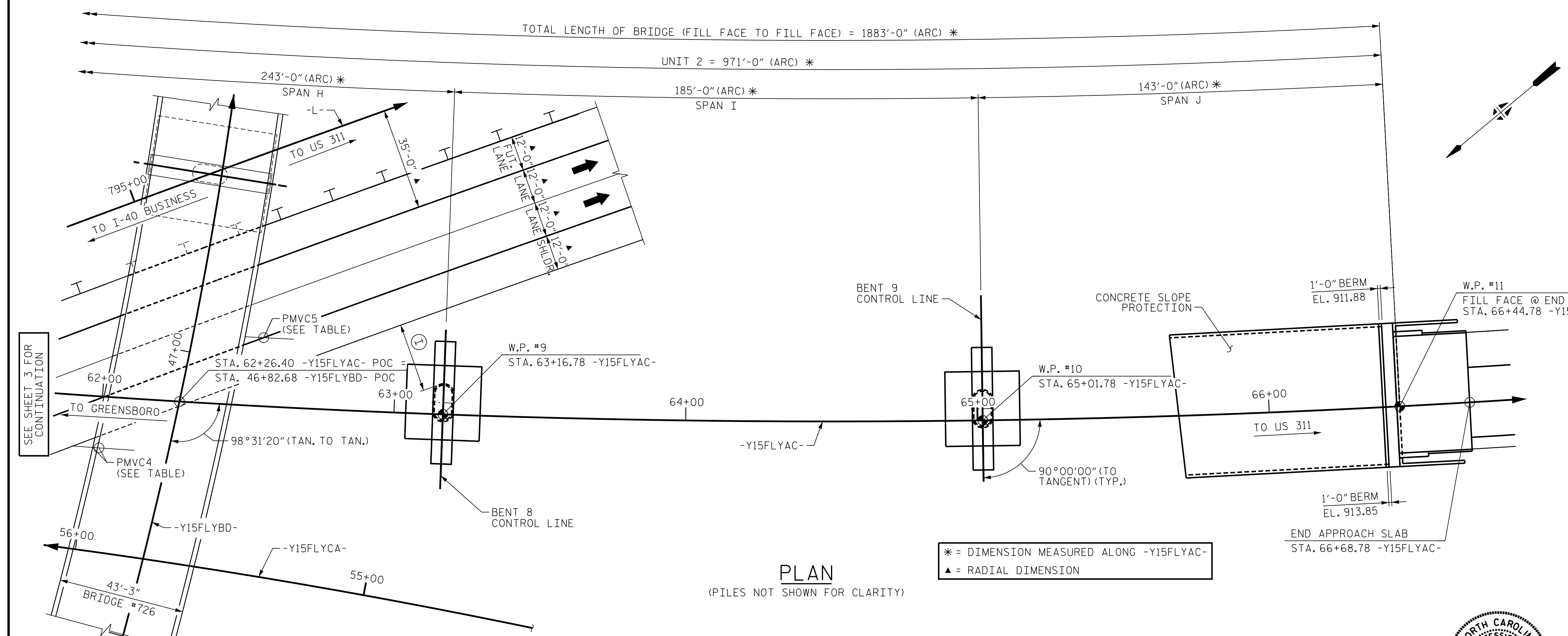
PI STA. 54+77.32
Δ = 82°37'38.4" (LT.)
D = 01°33'55.7"
L = 5,278.16'
T = 3,216.94'
R = 3,660.00'

HORIZONTAL CURVE DATA -L-

PI STA. 795+15.62
Δ = 29°47'50.6" (RT.)
D = 00°44'58.0"
L = 3,975.88'
T = 2,033.99'
R = 7,645.00'

HORIZONTAL CURVE DATA -Y15FLYBD-

PI STA. 88+39.55
Δ = 150°28'10.6" (LT.)
D = 03°40'22.1"
L = 4,096.86'
T = 5,918.92'
R = 1,560.00'



* = DIMENSION MEASURED ALONG -Y15FLYAC-
▲ = RADIAL DIMENSION

LOCATION	ROADWAY ABOVE		ELEV. ON ROADWAY ABOVE	ROADWAY BELOW		ELEV. ON ROADWAY BELOW
	STATION	OFFSET		STATION	OFFSET	
PMVC4	46+61.08 -Y15FLYBD-	23.50' (LT)	953.92	61+99.99 -Y15FLYAC-	16.00' (RT)	928.53
PMVC5	62+54.03 -Y15FLYAC-	23.50' (LT)	926.68	795+25.49 -L-	59.00' (RT)	877.65

PROJECT NO. U-2579AB
FORSYTH COUNTY
STATION: 60+66.06 -Y15FLYAC-

SHEET 4 OF 11

STATE OF NORTH CAROLINA
DEPARTMENT OF TRANSPORTATION
RALEIGH

GENERAL DRAWING
BRIDGE ON -Y15FLYAC- IN INTERCHANGE CONNECTING WINSTON-SALEM NORTHERN BELTWAY AND I-40 BYPASS BETWEEN SR 4315 AND SR 2679



10/15/2021

REVISIONS						SHEET NO. 504-004 TOTAL SHEETS 144
NO.	BY:	DATE:	NO.	BY:	DATE:	
1	--	--	3	--	--	
2	--	--	4	--	--	

HDR HDR Engineering, Inc. of the Carolinas
555 Fayetteville St., Suite 900 Raleigh, N.C. 27601
N.C.B.E.L.S. License Number: F-0116

DOCUMENT NOT CONSIDERED FINAL UNLESS ALL SIGNATURES COMPLETED

PLOT DRIVER: NCDOT_pdf_color_eng-50dpi
 USER: PETERSON DATE: 10/14/2021
 PENTABLE: NCDOT_STRUCTURES_DEFAULT_PEN.tbl
 TIME: 3:57:21 PM
 FILE: ... \GENERAL

DES BY: M. NEIHEISEL DATE: 07/19
 DES CHK: S. NIFONG DATE: 07/19
 DWG BY: B. PETERSON DATE: 07/19
 CHK BY: S. NIFONG DATE: 07/19