

PLAN
ALL ELEVATIONS ARE GIVEN AT THE TOP OF SLOPE PROTECTION.

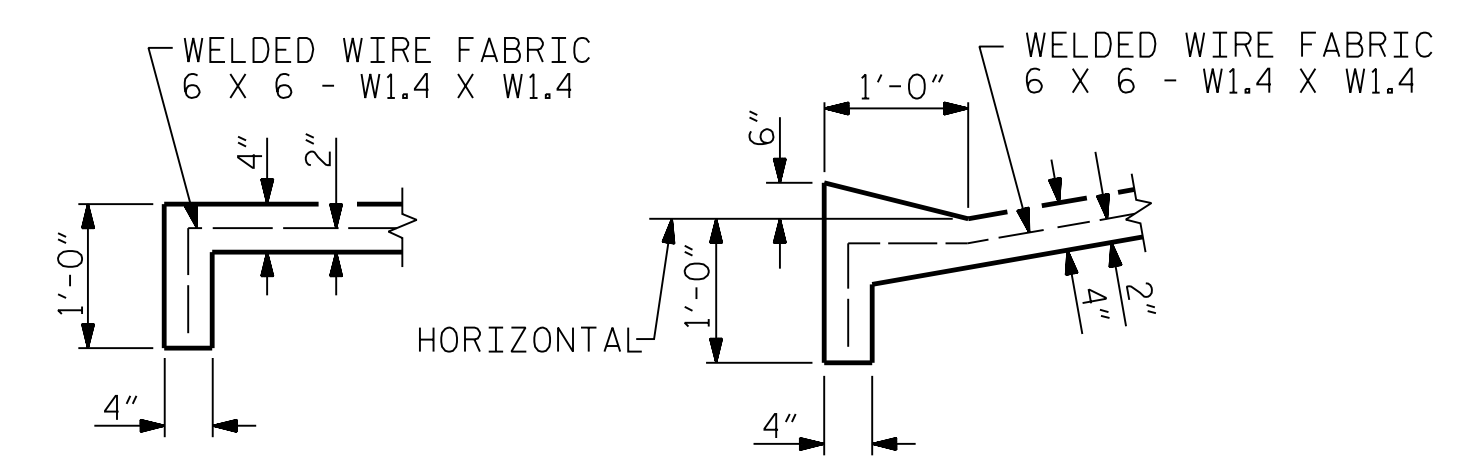
GENERAL NOTES

SLOPE PROTECTION SHALL BE PLACED UNDER THE ENDS OF THE BRIDGE AS SHOWN IN THE DETAILS. STRAIGHT EDGING WILL NOT BE REQUIRED UNLESS, IN THE OPINION OF THE ENGINEER, VISUAL INSPECTION INDICATES A NEED FOR IT. MEASUREMENT AND PAYMENT SHALL BE AS PRESCRIBED IN SECTION 462 OF THE STANDARD SPECIFICATIONS. FOR BERM WIDTH, SEE GENERAL DRAWING.

SLOPE PROTECTION SHALL CONSIST OF 4" POURED-IN-PLACE CONCRETE PAVING AS SHOWN IN THE DETAILS ON THIS SHEET. CONCRETE SHALL BE CLASS "B". THE CONCRETE SURFACE SHALL BE FLOATED WITH A WOODEN FLOAT AND FINISHED. WELDED WIRE FABRIC REINFORCING SHALL BE 6 X 6 - W1.4 X W1.4, 60" WIDE. SLOPE PROTECTION SHALL BE POURED IN 5' STRIPS AS SHOWN IN THE "POURING DETAIL" WITH 2'-0" LONG #4 BARS PLACED ALONG THE SLOPE BETWEEN STRIPS AT 1'-6" MAXIMUM SPACING. SLOPE PROTECTION MAY BE POURED IN ALTERNATE 4' AND 5' STRIPS AS SHOWN IN THE "OPTIONAL POURING DETAIL" WITH ADJACENT RUNS OF WELDED WIRE FABRIC LAPPING AT LEAST 6". THE COST OF THE WELDED WIRE FABRIC AND #4 BARS, IF USED, SHALL BE INCLUDED IN THE CONTRACT UNIT PRICE BID PER SQUARE YARD FOR SLOPE PROTECTION.

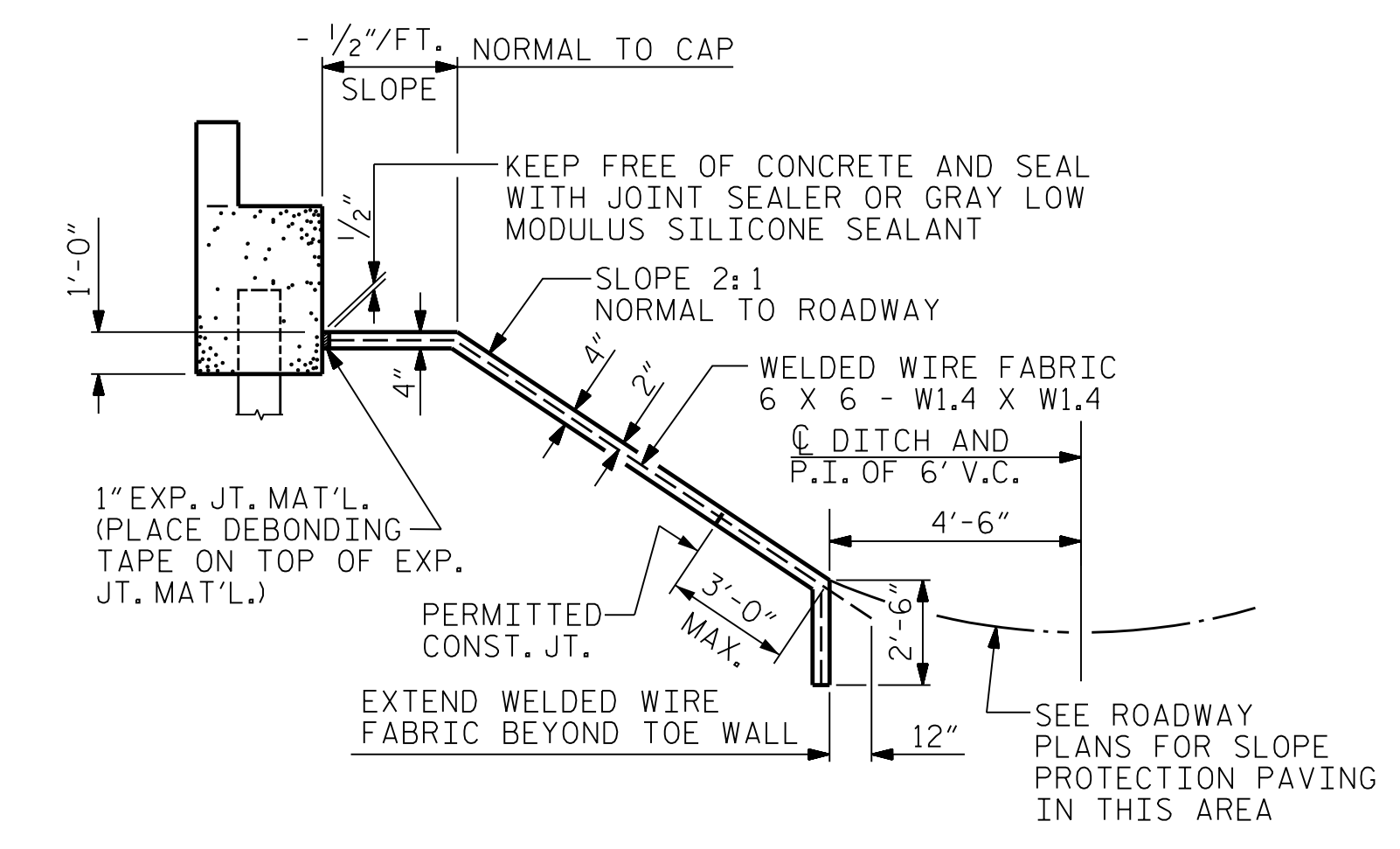
BRIDGE @ STA. 47+28.33 -Y15REV-	4 INCH SLOPE PROTECTION	* WELDED WIRE FABRIC 60 INCHES WIDE
	SQUARE YARDS	APPROX. L.F.
END BENT 1	552.2	995
END BENT 2	707.0	1273

* QUANTITY SHOWN IS BASED ON 5' POURS.



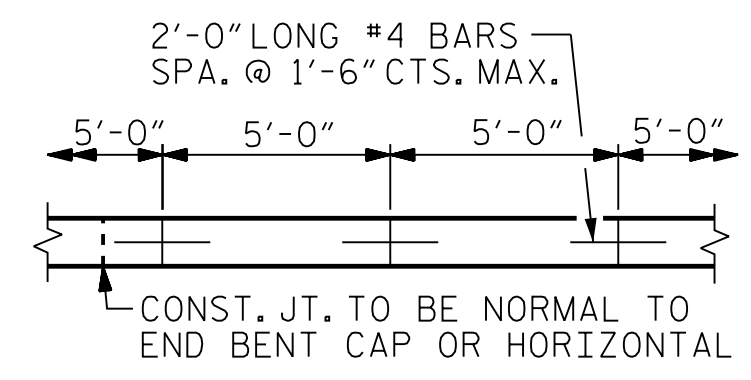
SECTION A-A

SECTION B-B

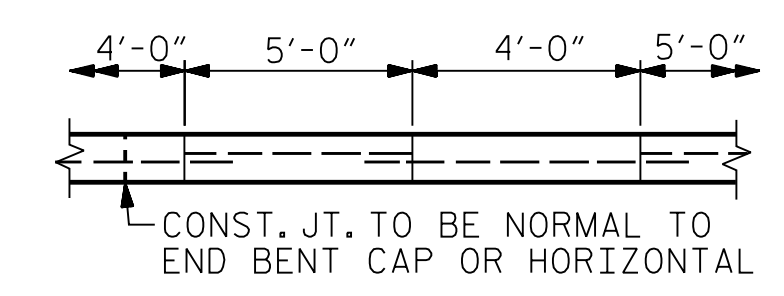


SECTION ALONG C SURVEY WHEN FILL CATCHES IN DITCH

PROJECT NO. U-2579AB
 FORSYTH COUNTY
 STATION: 47+28.33 -Y15REV-



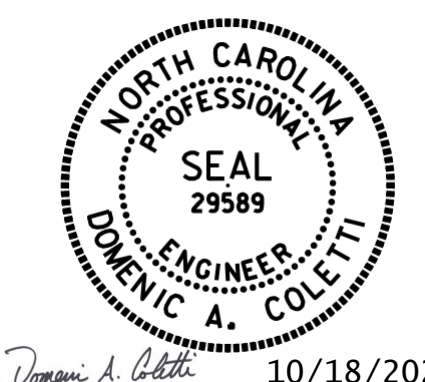
POURING DETAIL
STRIP WIDTHS MAY VARY IN CURVED PORTION.



OPTIONAL POURING DETAIL
POUR A 4'-0" STRIP FIRST. STRIP WIDTHS MAY VARY IN CURVED PORTION.

PLOT DRIVER: NCDOT.pdf_color_eng-50dpi
 USER: PPEIERSO DATE: 10/14/2021
 FILE: ...SLOPE PROTECTION D
 PENTABLE: NCDOT STRUCTURES DEFAULT PEN.tbl
 TIME: 3:52:37 PM

DES BY: S. NIFONG	DATE: 03/19	DWG BY: M. SELLS	DATE: 03/19
DES CHK: A. MILLER	DATE: 05/19	CHK BY: A. MILLER	DATE: 05/19



10/18/2021

STATE OF NORTH CAROLINA
 DEPARTMENT OF TRANSPORTATION
 RALEIGH

**SLOPE PROTECTION
 DETAILS**

REVISIONS					
NO.	BY:	DATE:	NO.	BY:	DATE:
1	--	--	3	--	--
2	--	--	4	--	--

SHEET NO. 503-55
 TOTAL SHEETS 61