

NOTES

THE CONCRETE IN THE SHADED AREA OF THE WING SHALL BE POURED AFTER THE CONCRETE BARRIER RAIL IS CAST IF SLIP FORMING IS USED.

FOR SECTIONS A-A, B-B AND E-E, SEE "SUBSTRUCTURE END BENT 1 SECTIONS AND DETAILS" SHEET 5 OF 6.

FOR PILE SPLICE DETAILS AND TEMPORARY DRAINAGE AT END BENT DETAIL, SEE "SUBSTRUCTURE END BENT 1 COMMON DETAILS" SHEET 6 OF 6.

ELEVATIONS MARKED WITH AN ASTERISK (*) ARE GIVEN AT THE FRONT OF THE CAP. SEE SECTION A-A FOR MORE INFORMATION.

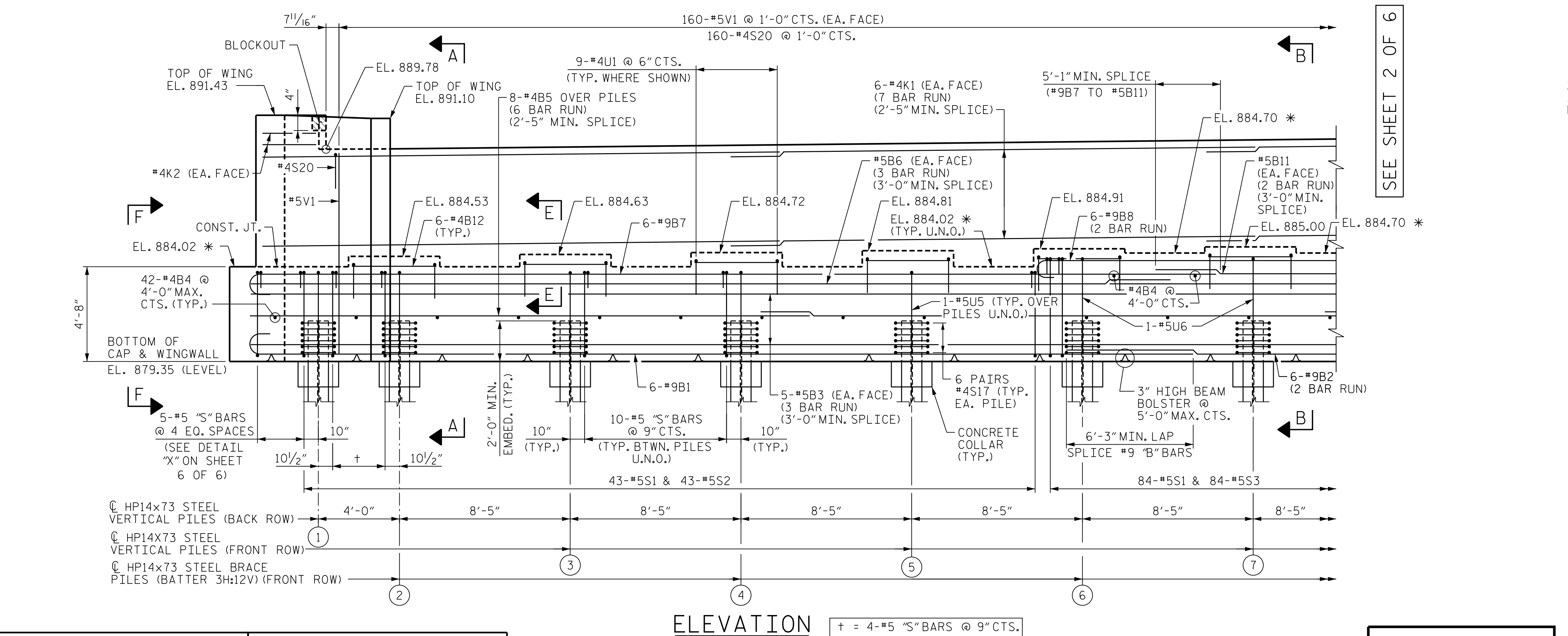
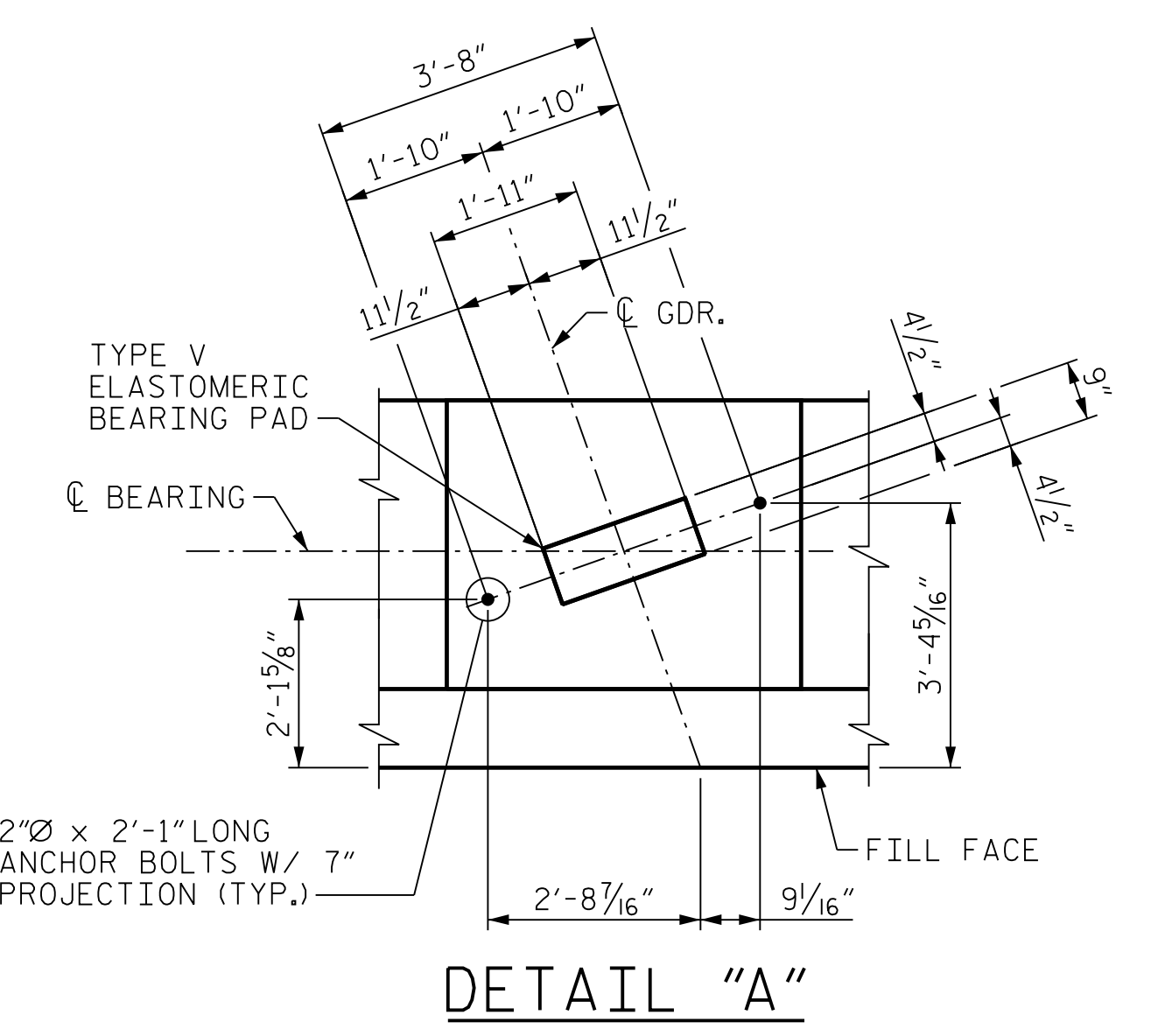
THE TOP SURFACE AREAS OF THE END BENT CAP SHALL BE CURED IN ACCORDANCE WITH THE STANDARD SPECIFICATIONS EXCEPT THAT THE MEMBRANE CURING COMPOUND METHOD SHALL NOT BE USED.

THE TOP SURFACE OF THE END BENT EXCEPT THE BRIDGE SEAT BUILDUPS SHALL BE SLOPED TRANSVERSELY FROM THE FILL FACE TO THE BACK FACE AT THE RATE OF 2%.

STIRRUPS IN THE CAP MAY BE SHIFTED AS NECESSARY TO CLEAR ANCHOR BOLTS.

BACKWALL SHALL BE PLACED BEFORE APPLYING THE EPOXY PROTECTIVE COATING.

SEE "GENERAL DRAWING FOUNDATION LAYOUT" FOR ADDITIONAL NOTES FOR DRIVING PILES.



SEE SHEET 2 OF 6

PROJECT NO. U-2579AB
 FORSYTH COUNTY
 STATION: 47+28.33 -Y15REV-
 SHEET 1 OF 6



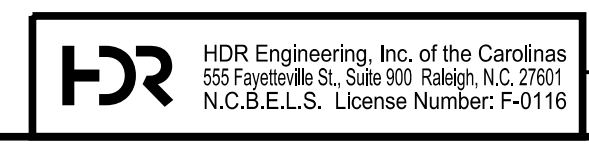
10/18/2021

STATE OF NORTH CAROLINA DEPARTMENT OF TRANSPORTATION RALEIGH					
SUBSTRUCTURE END BENT 1					
REVISIONS					
NO.	BY:	DATE:	NO.	BY:	DATE:
1	--	--	3	--	--
2	--	--	4	--	--

SHEET NO. S03-39
TOTAL SHEETS 61

PLOT DRIVER: NCDOT.pdf_color_eng-50dpi
 USER: PPETERSO DATE: 10/14/2021
 FILE: ...SUBSTRUCTURE END B

DES BY: S. NIFONG DATE: 02/19
 DES CHK: M. NEIHEISEL DATE: 02/19
 DWG BY: B. PETERSON DATE: 02/19
 CHK BY: M. NEIHEISEL DATE: 05/19



DOCUMENT NOT CONSIDERED FINAL
 UNLESS ALL SIGNATURES COMPLETED