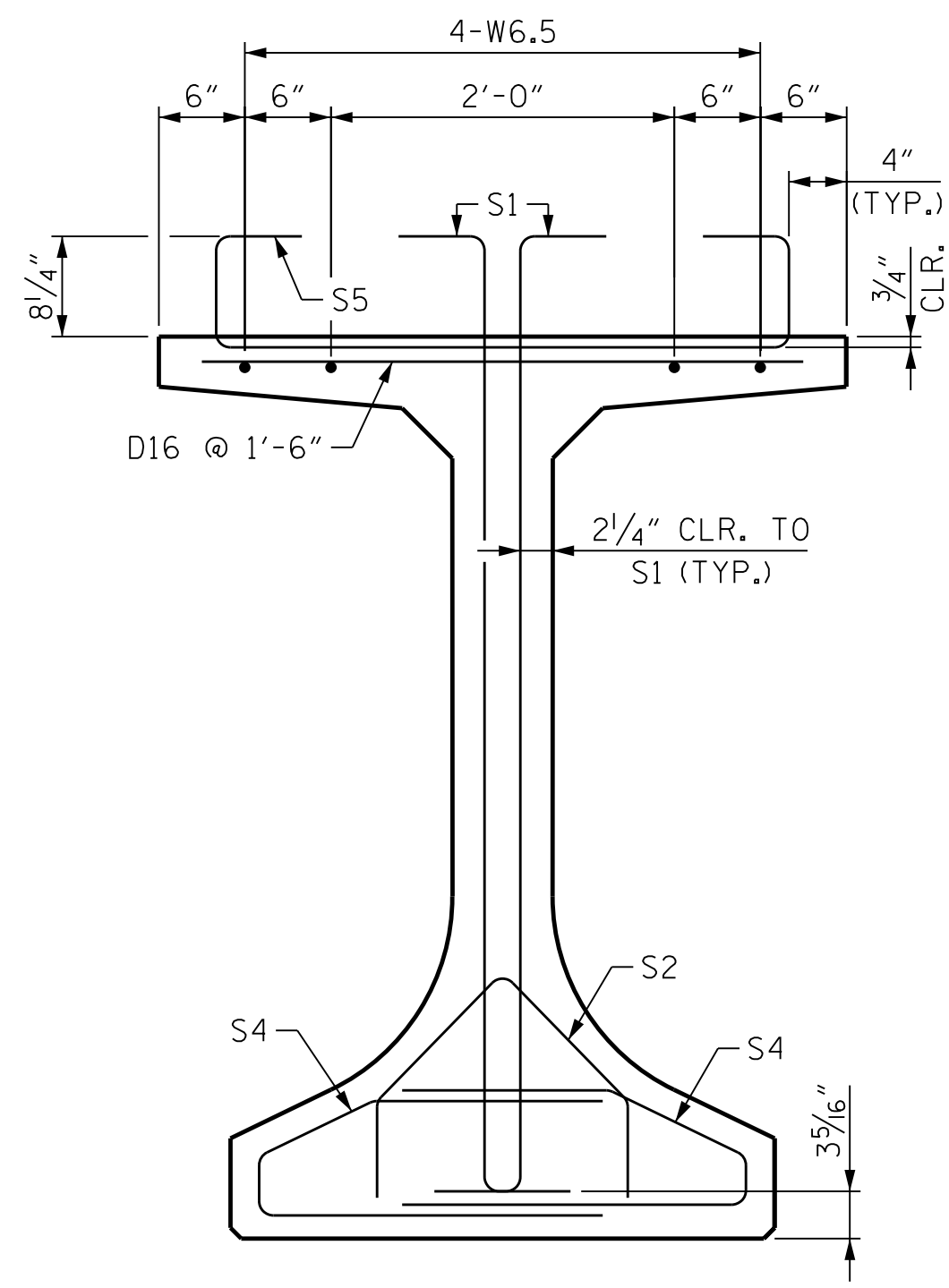
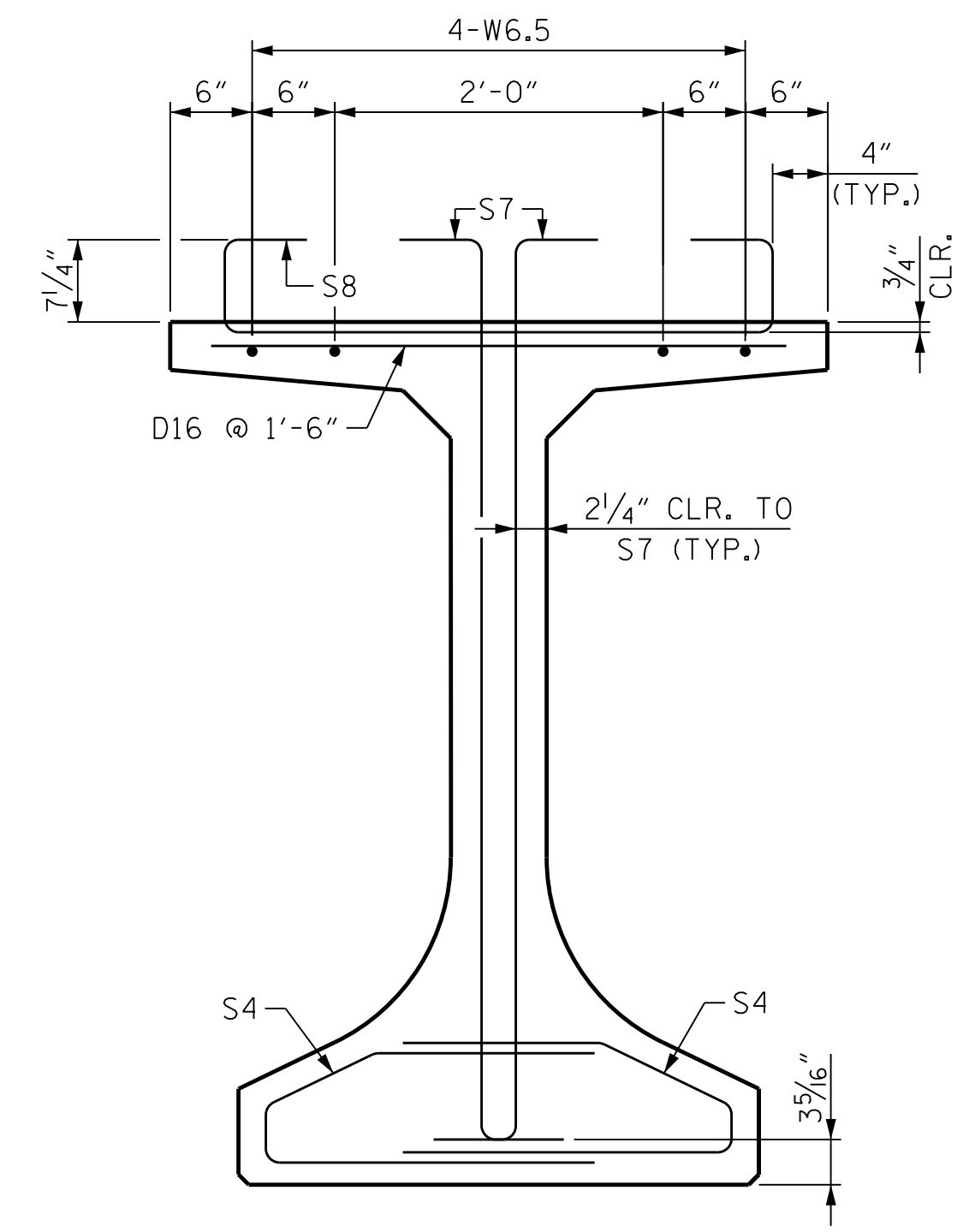


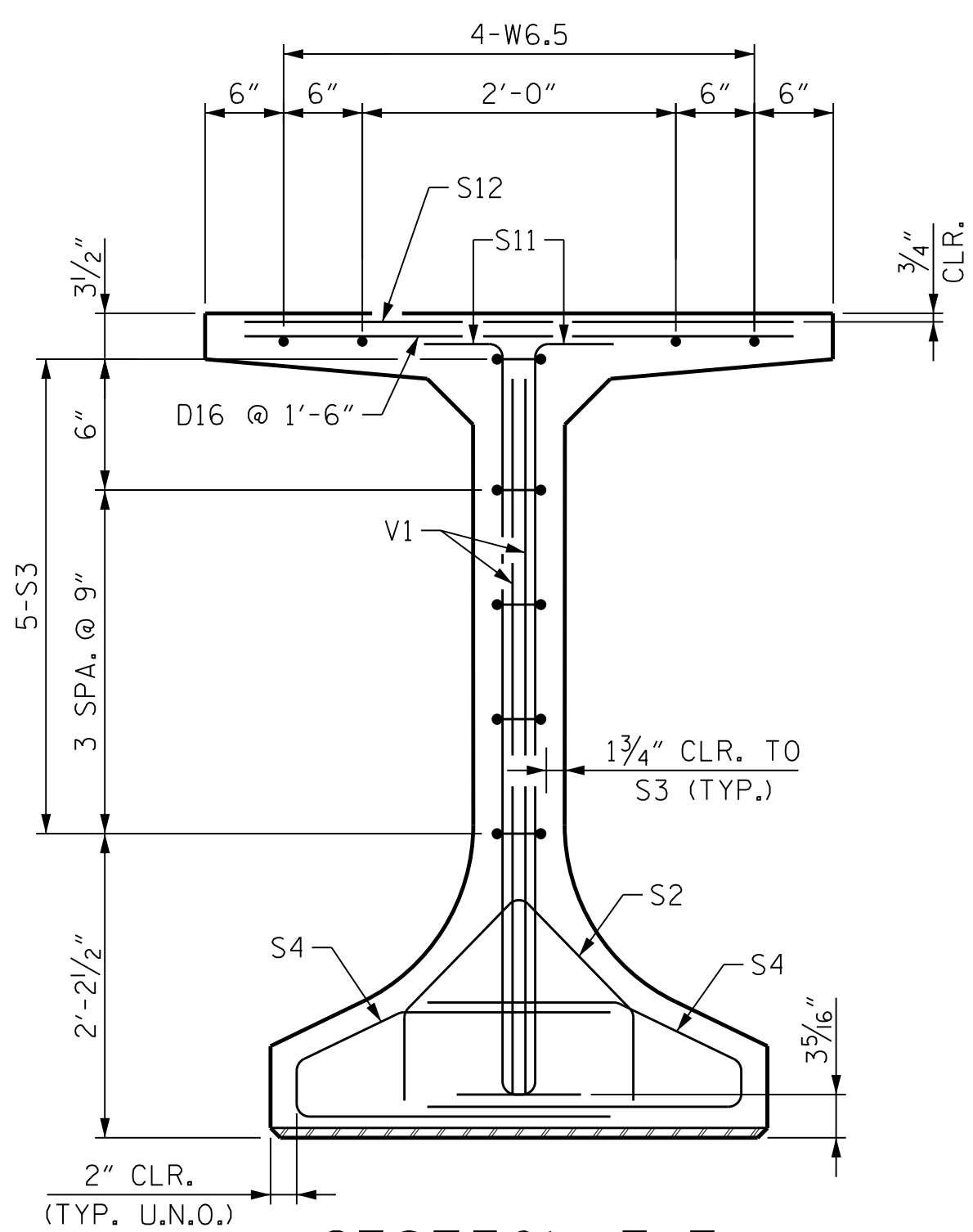
SECTION A-A



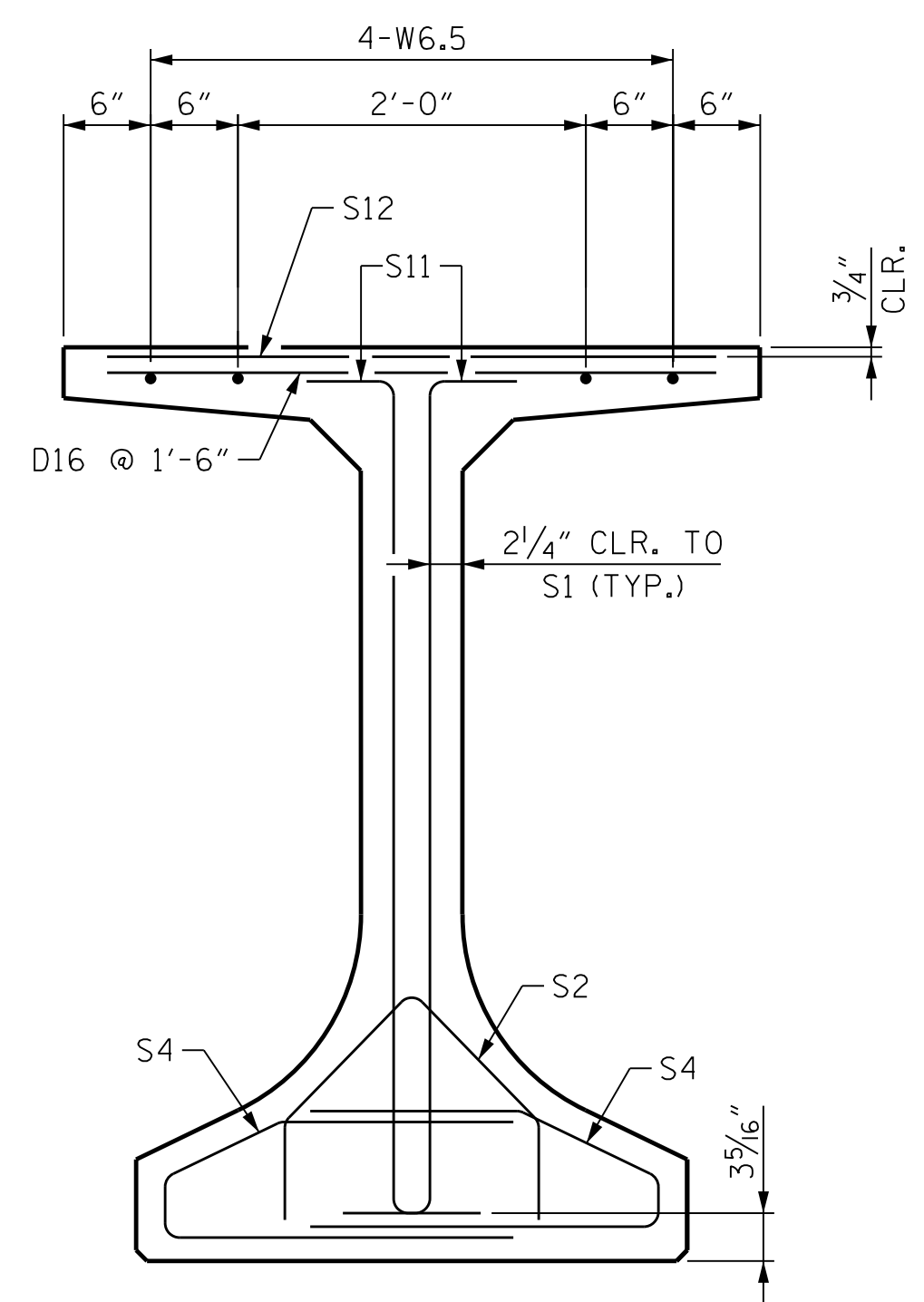
SECTION B-B



SECTION C-C



SECTION F-F



SECTION E-E

NOTES

ALL PRESTRESSING STRANDS SHALL BE 7-WIRE LOW-RELAXATION GRADE 270 STRANDS AND SHALL CONFORM TO AASHTO M203 EXCEPT FOR SAMPLING REQUIREMENTS WHICH SHALL BE IN ACCORDANCE WITH THE STANDARD SPECIFICATIONS.

ALL REINFORCING STEEL SHALL BE GRADE 60.

APPLY EPOXY PROTECTIVE COATING TO END OF GIRDER SURFACES INDICATED IN ELEVATION VIEW ON SHEETS 1 OF 4 AND 2 OF 4.

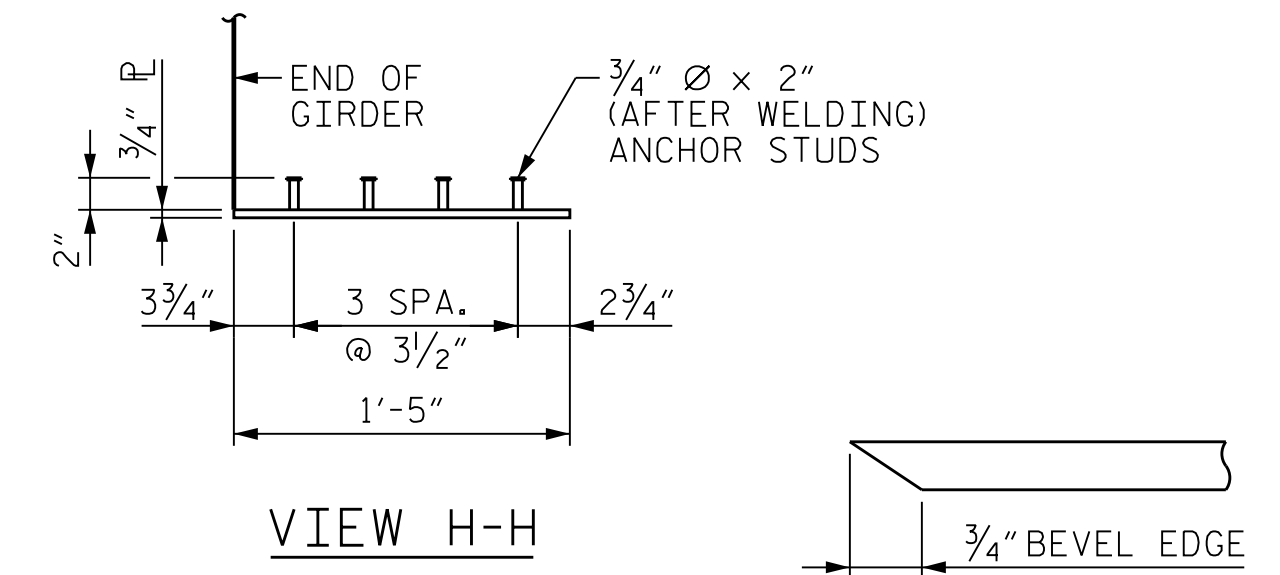
EMBEDDED PLATE "B-1" SHALL BE GALVANIZED IN ACCORDANCE WITH THE STANDARD SPECIFICATIONS.

ANCHOR STUDS SHALL CONFORM TO AASHTO M169 GRADES 1010 THROUGH 1020 OR APPROVED EQUAL, AND SHALL MEET THE TYPE "B" REQUIREMENTS OF SUBSECTION 7.3 OF THE ANSI/AASHTO/AWS D1.5 BRIDGE WELDING CODE.

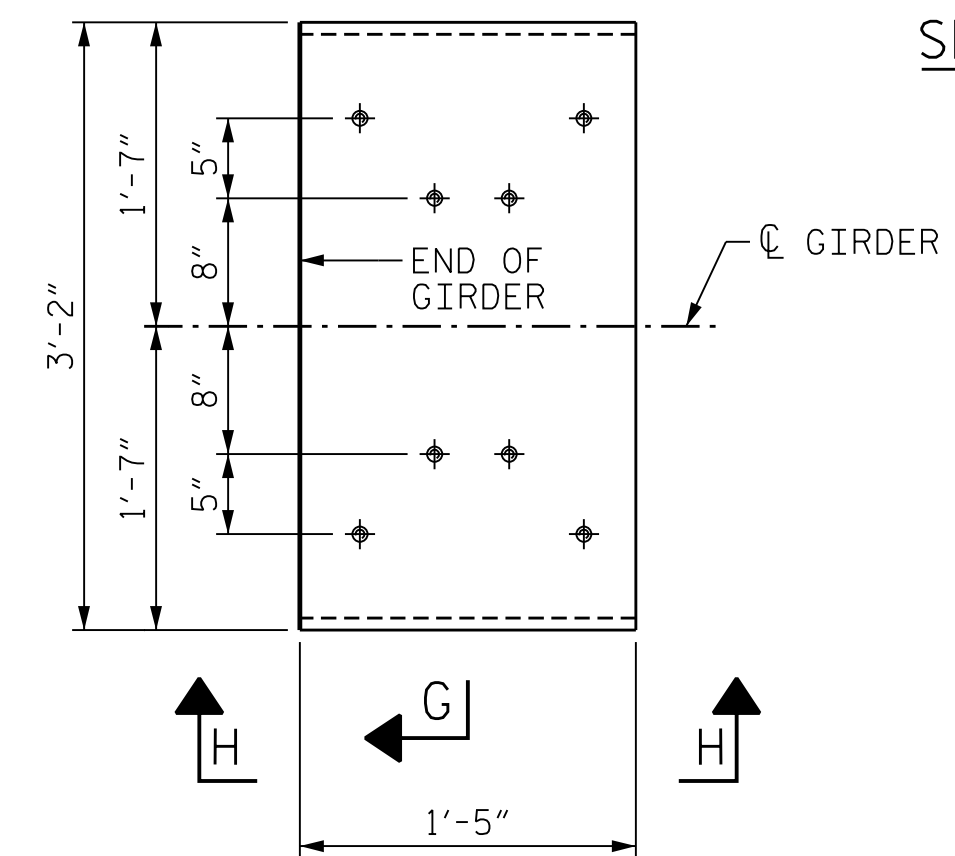
THE TRANSFER OF LOAD FROM THE ANCHORAGES TO THE GIRDER SHALL BE DONE WHEN CONCRETE HAS REACHED A COMPRESSIVE STRENGTH OF NOT LESS THAN 6400 PSI.

DEPENDING ON THE TYPE OF SYSTEM USED TO SUPPORT THE DECK SLAB FORMS, PRESET ANCHORS MAY BE NECESSARY IN THE PRESTRESSED CONCRETE GIRDER.

THE TOP SURFACE OF THE GIRDER, EXCLUDING THE OUTSIDE 4" AND WITHIN THE LINK SLAB AREA, SHALL BE RAKED TO A DEPTH OF 1/4".



VIEW H-H



SECTION "G"
(SEE NOTES)

EMBEDDED PLATE "B-1"
DETAILS
(2 REQ'D PER GIRDER)

PROJECT NO. U-2579AB

FORSYTH COUNTY

STATION: 47+28.33 -Y15REV-

SHEET 3 OF 4



10/18/2021

STATE OF NORTH CAROLINA
DEPARTMENT OF TRANSPORTATION
RALEIGH
SUPERSTRUCTURE
PRESTRESSED CONCRETE
GIRDER FOR LINK SLAB
DETAILS

REVISIONS						SHEET NO. S03-25 TOTAL SHEETS 61
NO.	BY:	DATE:	NO.	BY:	DATE:	
1	--	--	3	--	--	
2	--	--	4	--	--	



DOCUMENT NOT CONSIDERED FINAL
UNLESS ALL SIGNATURES COMPLETED

PLOT DRIVER: NCDOT_pdf_color_eng-50dpi
USER: PPEIERSO DATE: 10/14/2021
FILE: ...SUPERSTRUCTURE PRE

DES BY: M. NEIHEISEL	DATE: 02/19	DWG BY: D. CARTER	DATE: 02/19
DES CHK: S. NIFONG	DATE: 02/19	CHK BY: A. MILLER	DATE: 04/19