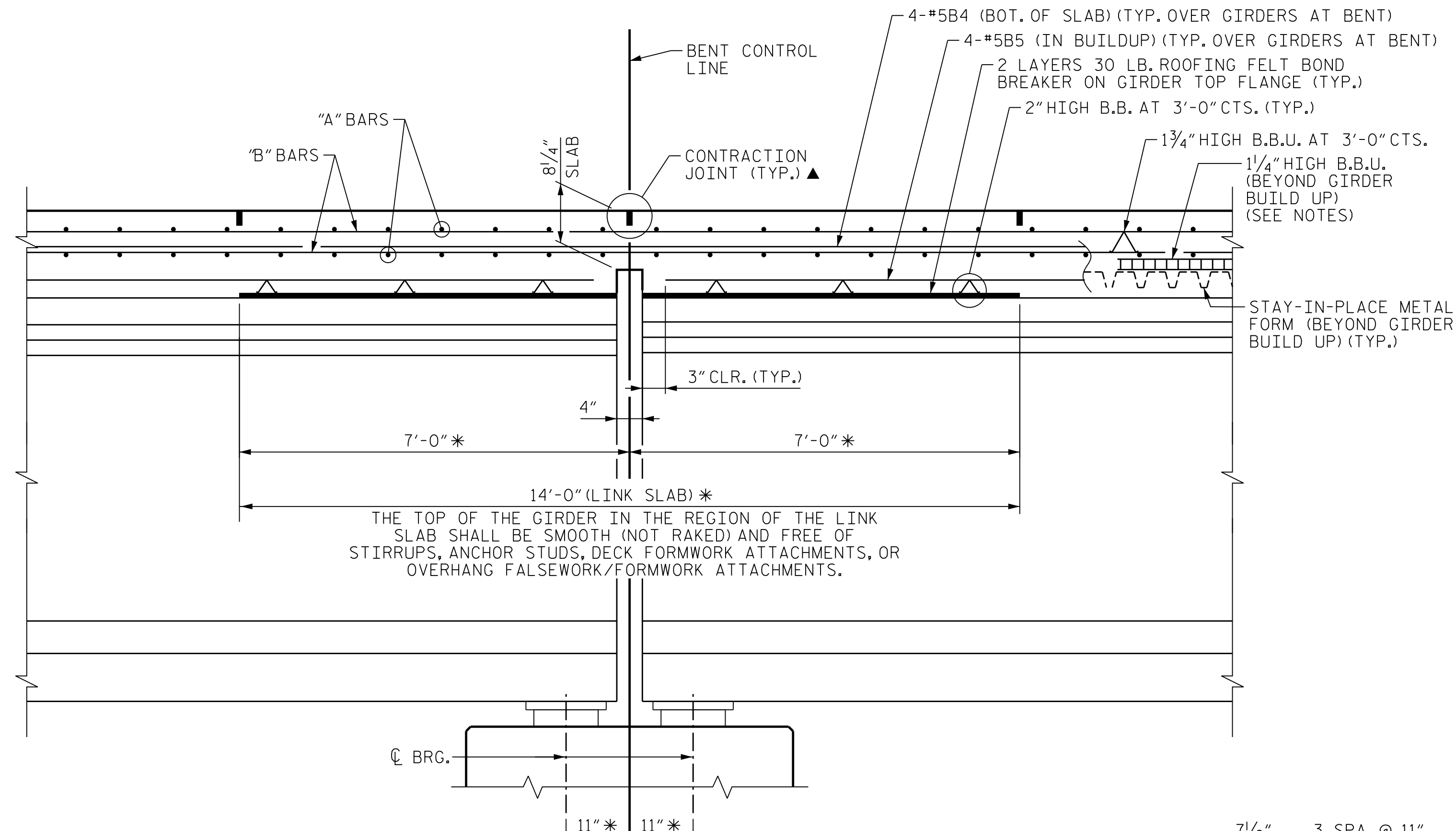
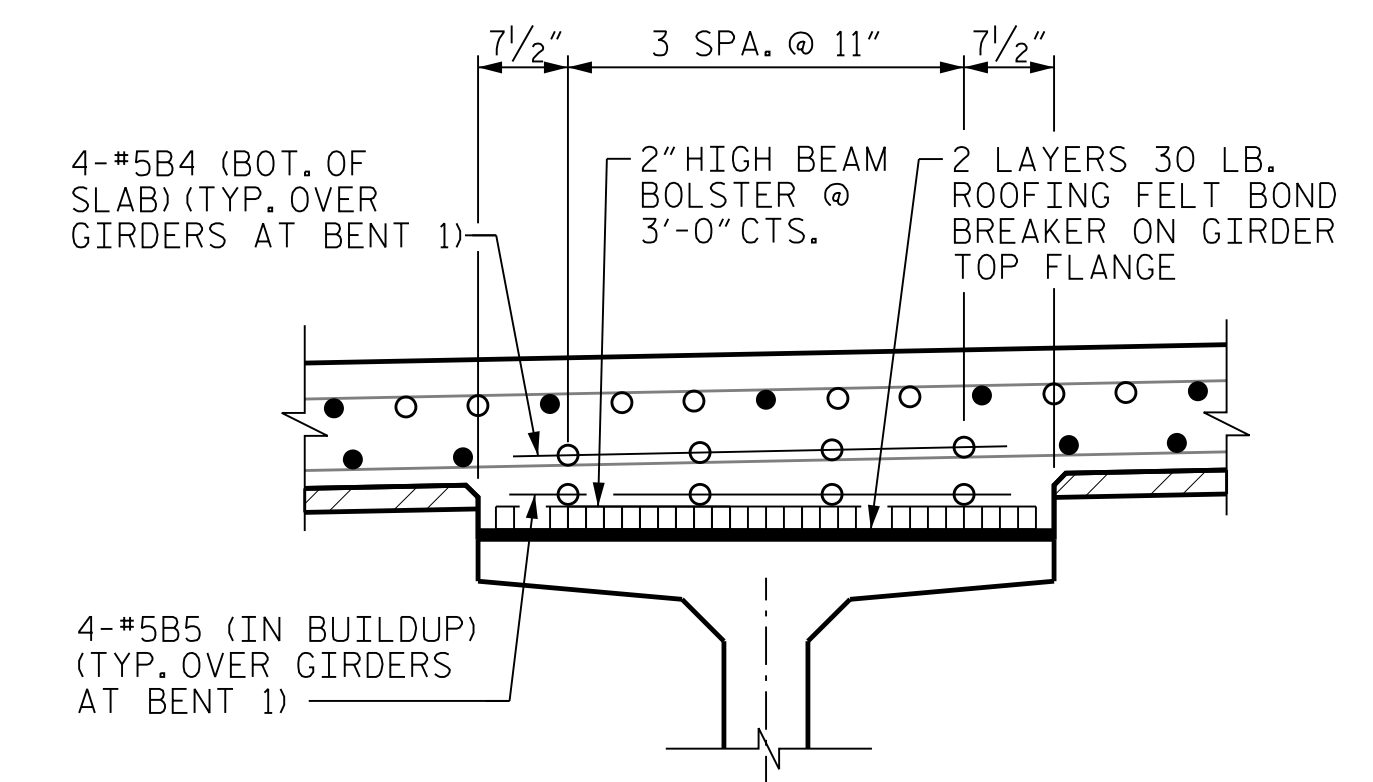


**SECTION A-A**  
(AT END BENTS)

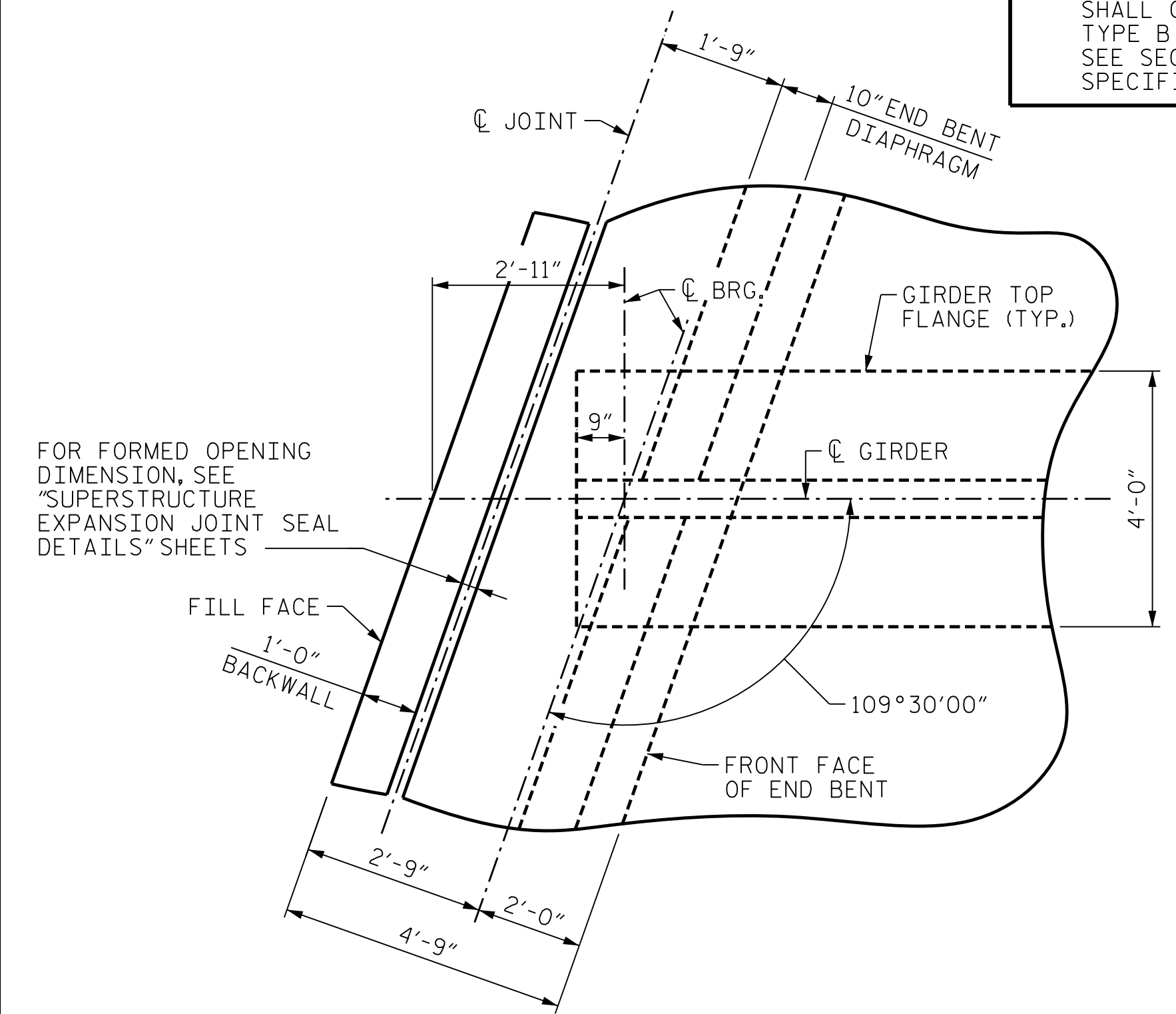
\* MEASURED ALONG C OF GIRDER  
 \*\* #5 "G" BAR MAY BE SHIFTED SLIGHTLY, AS NECESSARY, TO CLEAR REINFORCING STEEL AND STIRRUPS.  
 ▲ A 1/2" DEEP, 3/8" WIDE CONTRACTION JOINT AT BENT CONTROL LINE AND AT ENDS OF LINK SLAB SHALL BE SAWN WITHIN 24 HOURS OF POURING THE DECK. THE JOINT SHALL BE FILLED WITH JOINT SEALER MATERIAL. THE JOINT SEALER MATERIAL SHALL CONFORM TO THE REQUIREMENTS OF TYPE B LOW MODULUS SILICONE SEALANT. SEE SECTION 1028 OF THE STANDARD SPECIFICATIONS.



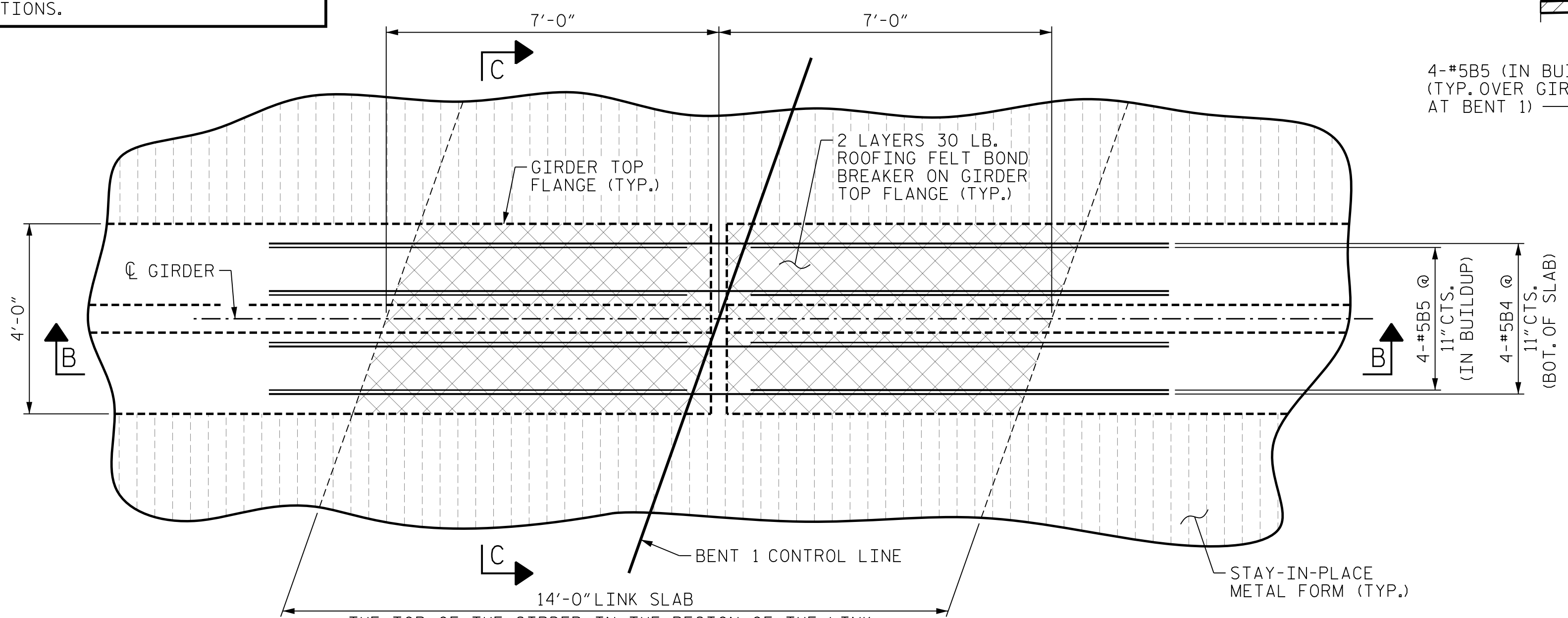
**SECTION B-B**  
(LINK SLAB AT INTERIOR BENT)



**SECTION C-C**



**PLAN OF GIRDER AT END BENT**  
(END BENT 1 SHOWN, END BENT 2 SIMILAR)



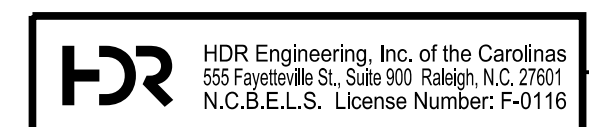
**PLAN OF GIRDERS AT BENT**

PROJECT NO. U-2579AB  
 FORSYTH COUNTY  
 STATION: 47+28.33 -Y15REV-  
 SHEET 5 OF 5



10/18/2021

DES BY: M. NEHEISEL	DATE: 03/19	DWG BY: B. PETERSON	DATE: 03/19
DES CHK: S. NIFONG	DATE: 04/19	CHK BY: S. NIFONG	DATE: 05/19



DOCUMENT NOT CONSIDERED FINAL UNLESS ALL SIGNATURES COMPLETED

REVISIONS						SHEET NO.	
NO.	BY:	DATE:	NO.	BY:	DATE:	503-09	
1	--	--	3	--	--	TOTAL SHEETS 61	
2	--	--	4	--	--		

PLOT DRIVER: NCDOT.pdf\_color\_eng-50dpi  
 USER: PPETERSO DATE: 10/14/2021  
 FILE: ...SUPERSTRUCTURE.TYP  
 PENTABLE: NCDOT\_STRUCTURES\_DEFAULT\_PEN.tbl  
 TIME: 3:46:02 PM