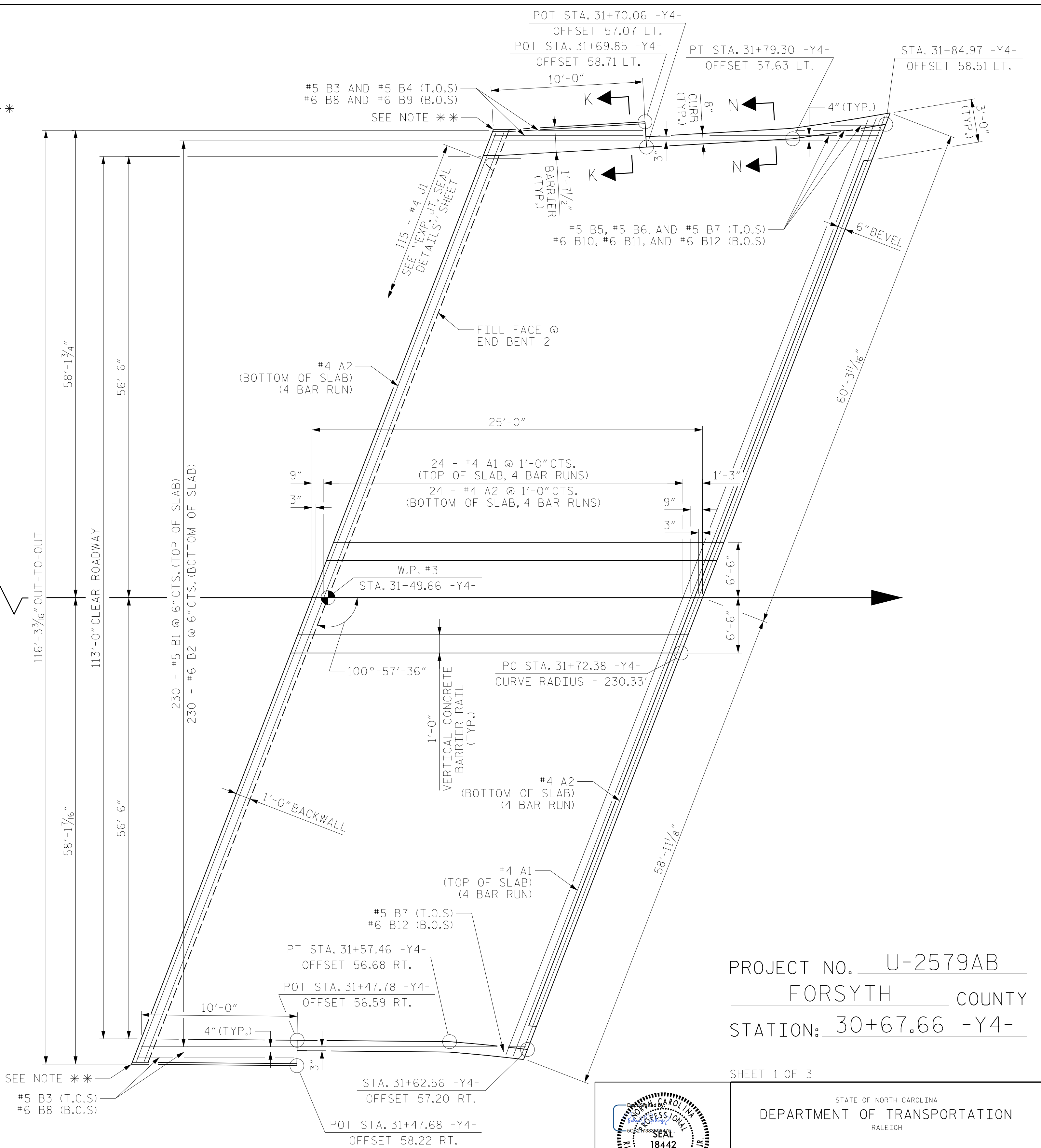


PLAN @ END BENT 1
NOT TO SCALE



PLAN @ END BENT 2
NOT TO SCALE

NOTES:
 "A" BARS ARE PLACED PARALLEL TO THE FILL FACE. "B" BARS ARE PLACED PARALLEL TO -Y4-.
 APPROACH SLABS ARE CONSTRUCTED ALONG TANGENTS USING PROVIDED STATIONS AND OFFSETS.
 FOR SECTION N-N AND SECTION K-K, SEE SHEET 2 OF 3.
 FOR ADDITIONAL NOTES, SEE SHEET 2 OF 3.

** EXTEND BARRIER TANGENT TO BRIDGE BARRIER TO FILL FACE LINE IN ORDER TO ACCOMMODATE BARRIER COVER PLATE GEOMETRY.

PROJECT NO. U-2579AB
FORSYTH COUNTY
 STATION: 30+67.66 -Y4-

SHEET 1 OF 3

DRAWN BY : PDS DATE : 07/2019
 CHECKED BY : JMR DATE : 09/2019
 DESIGN ENGINEER OF RECORD: JMR DATE : 10/2019

10/14/2021
 X:\P1031785002 U-2579AB WS North Beltway\Design\Structures\CAD\Site 2\402.069.U2579AB.SMU.AS.S-35.330723.dgn
 CuanyN

DOCUMENT NOT CONSIDERED
 FINAL UNLESS ALL
 SIGNATURES COMPLETED



STATE OF NORTH CAROLINA DEPARTMENT OF TRANSPORTATION RALEIGH					
BRIDGE APPROACH SLAB FOR FLEXIBLE PAVEMENT					
SHEET NO. S2-35					
TOTAL SHEETS 37					
REVISIONS					
NO.	BY:	DATE:	NO.	BY:	DATE:
1			3		
2			4		