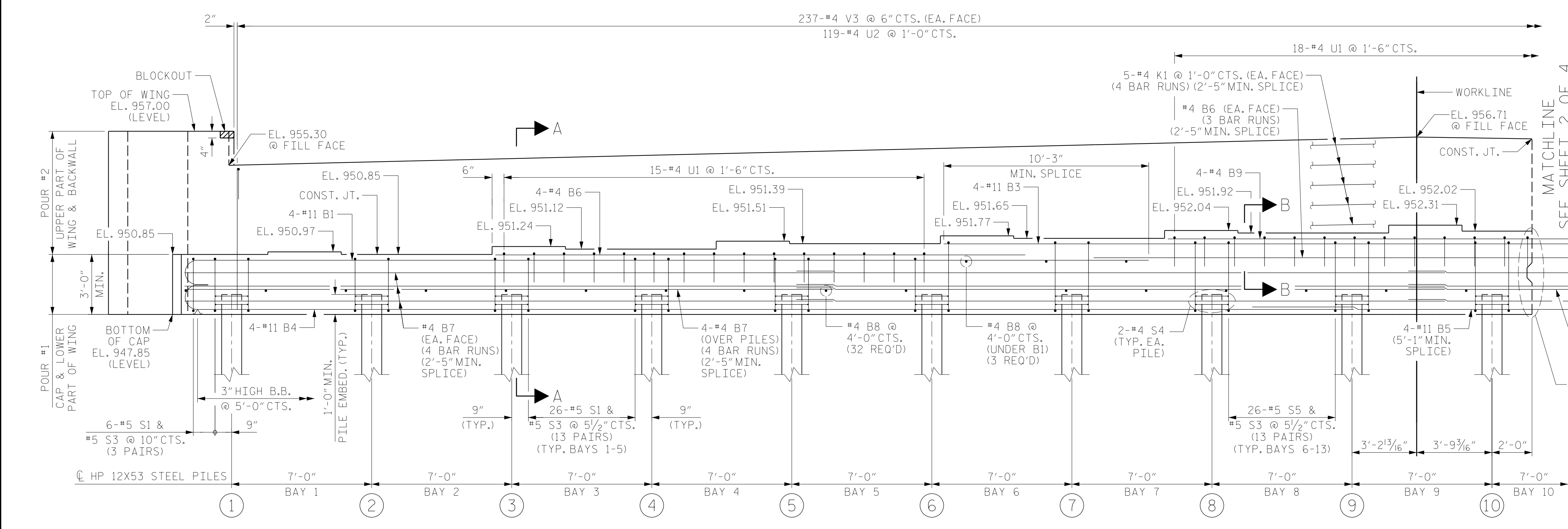
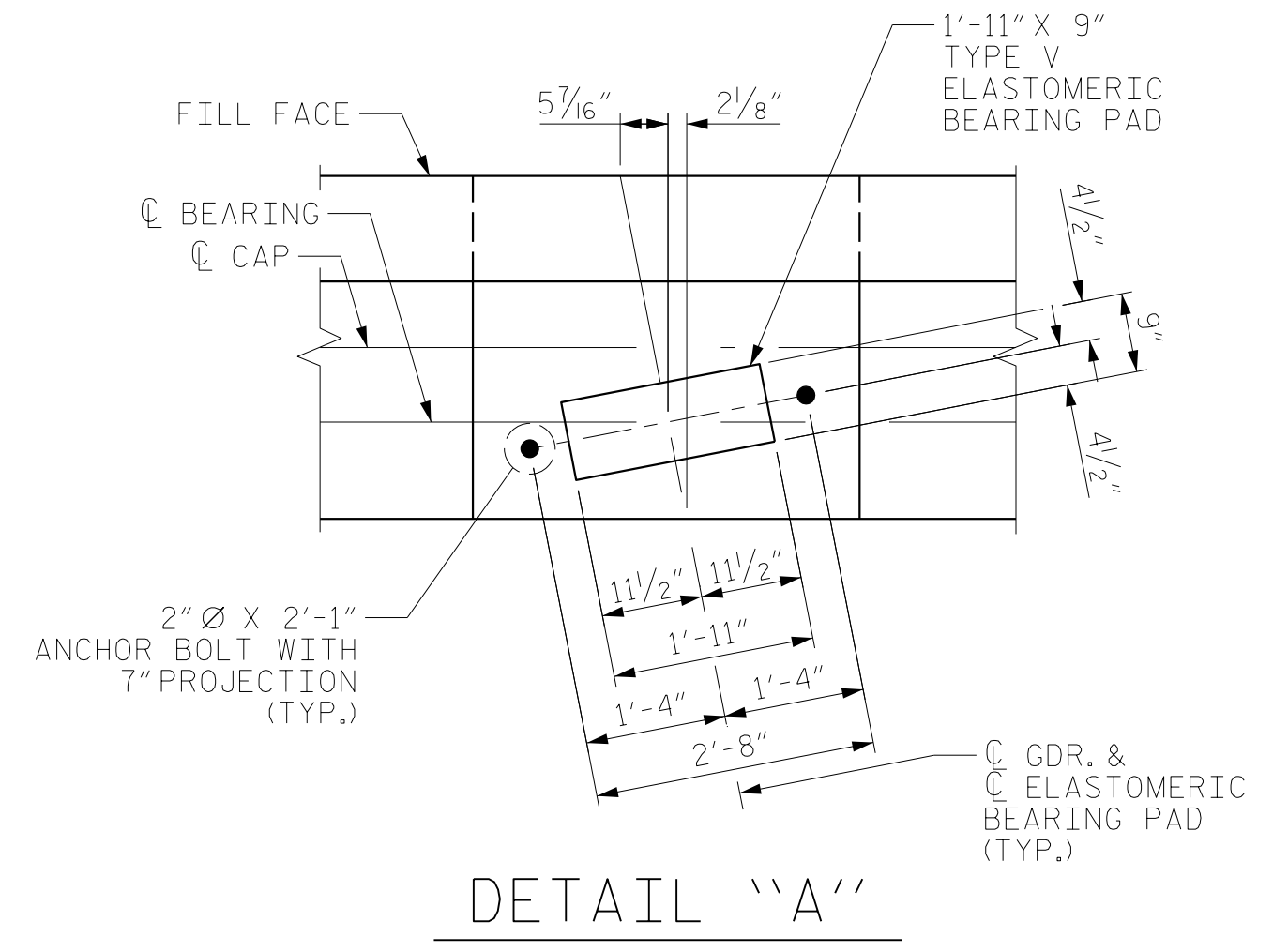


PARTIAL PLAN



PARTIAL ELEVATION

**NOTES:**  
 FOR SECTION A-A AND PARTIAL SECTION B-B, SEE SHEET 4 OF 4.  
 FOR PILE SPLICE DETAILS, SEE SHEET 4 OF 4.  
 STIRRUPS AND U1 BARS IN CAP MAY BE SHIFTED, AS NECESSARY, TO CLEAR ANCHOR BOLTS  
 BACKWALL SHALL BE PLACED BEFORE APPLYING THE EPOXY PROTECTIVE COATING.  
 THE TOP SURFACE OF THE END BENT CAP SHALL BE CURED IN ACCORDANCE WITH THE STANDARD SPECIFICATIONS, EXCEPT THE MEMBRANE CURING COMPOUND METHOD SHALL NOT BE USED.  
 THE TOP SURFACE AREA OF THE END BENT CAP EXCEPT THE BRIDGE SEAT BUILDUPS SHALL BE SLOPED TRANSVERSELY FROM THE FILL FACE TO THE BACK FACE AT THE RATE OF 2%.  
 THE CONCRETE IN THE SHADED AREA OF THE WING SHALL BE POURED AFTER THE JOINT BETWEEN THE DECK AND THE APPROACH SLAB HAS BEEN SAWED AND THE CONCRETE BARRIER WALLS ARE CAST IF SLIP FORMING IS USED.  
 STIRRUPS NEAR SKEWED ENDS MAY BE SKEWED TO FIT TO ENSURE CONCRETE CLEARANCES.



DETAIL "A"

PROJECT NO. U-2579AB  
FORSYTH COUNTY  
 STATION: 30+67.66 -Y4-



STATE OF NORTH CAROLINA  
 DEPARTMENT OF TRANSPORTATION  
 RALEIGH  
 SUBSTRUCTURE  
 END BENT 2 PARTIAL  
 PLAN AND ELEVATION

DRAWN BY : MRA DATE : 08/2019  
 CHECKED BY : JMR DATE : 09/2019  
 DESIGN ENGINEER OF RECORD: JMR DATE : 10/2019

DOCUMENT NOT CONSIDERED  
 FINAL UNLESS ALL  
 SIGNATURES COMPLETED

RS&H Architects-Engineers-Planners, Inc.  
 8521 Six Forks Road, Suite 400  
 919-926-4100 FAX 919-846-9080  
 www.rsandh.com  
 North Carolina License No. 50737-0403-C-02

REVISIONS						SHEET NO.
NO.	BY:	DATE:	NO.	BY:	DATE:	S2-30
1			3			TOTAL SHEETS
2			4			37