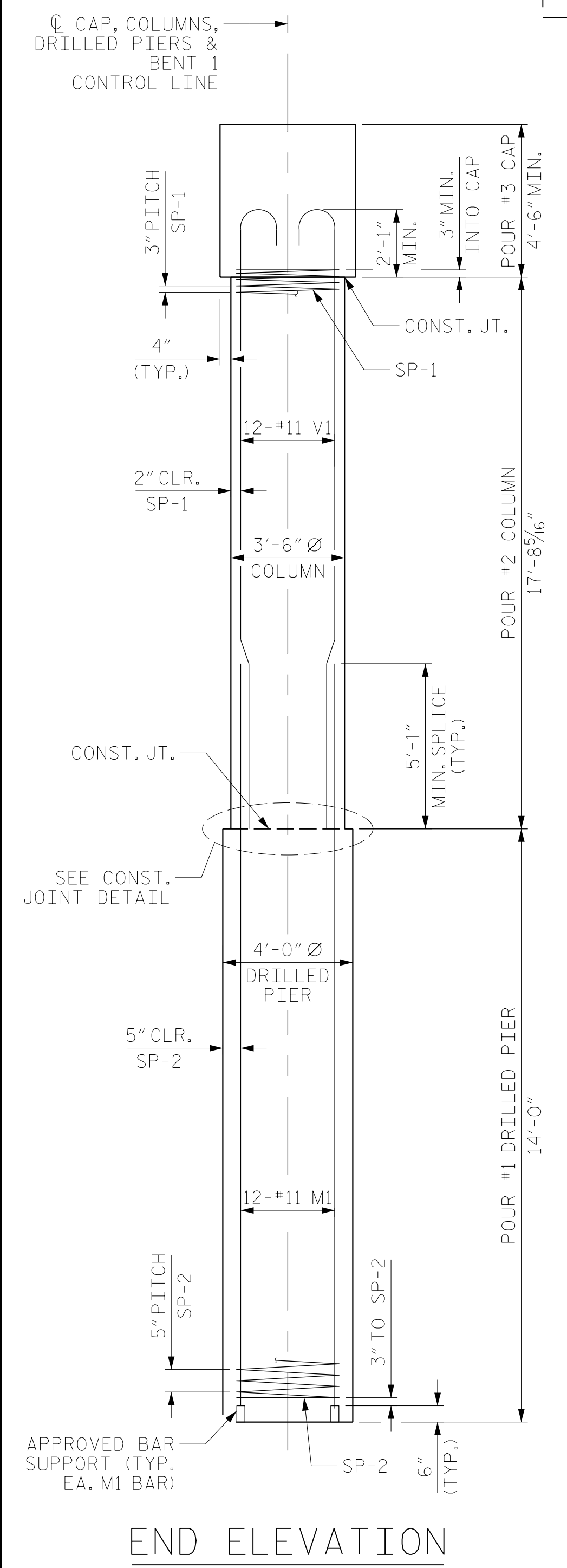
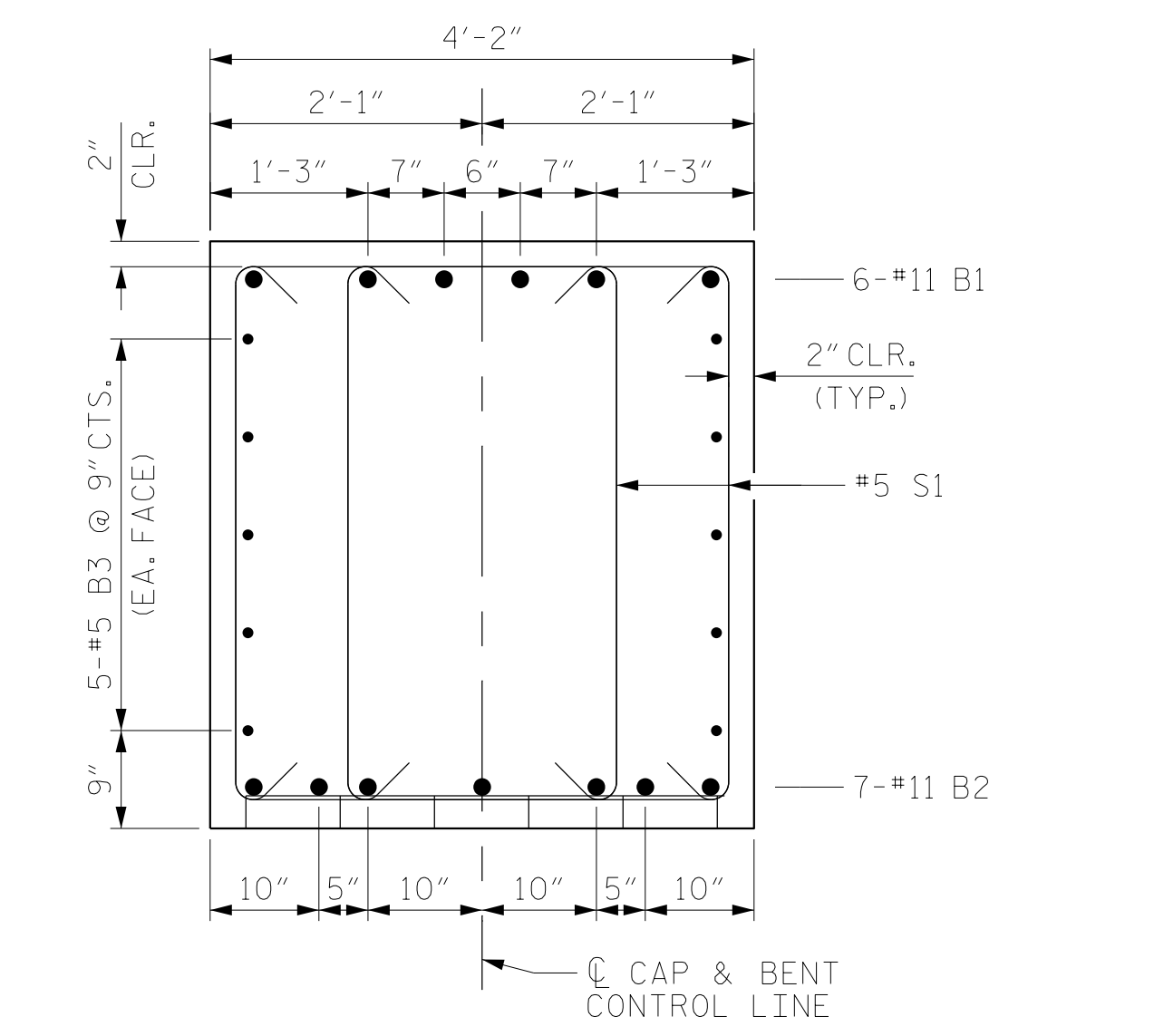


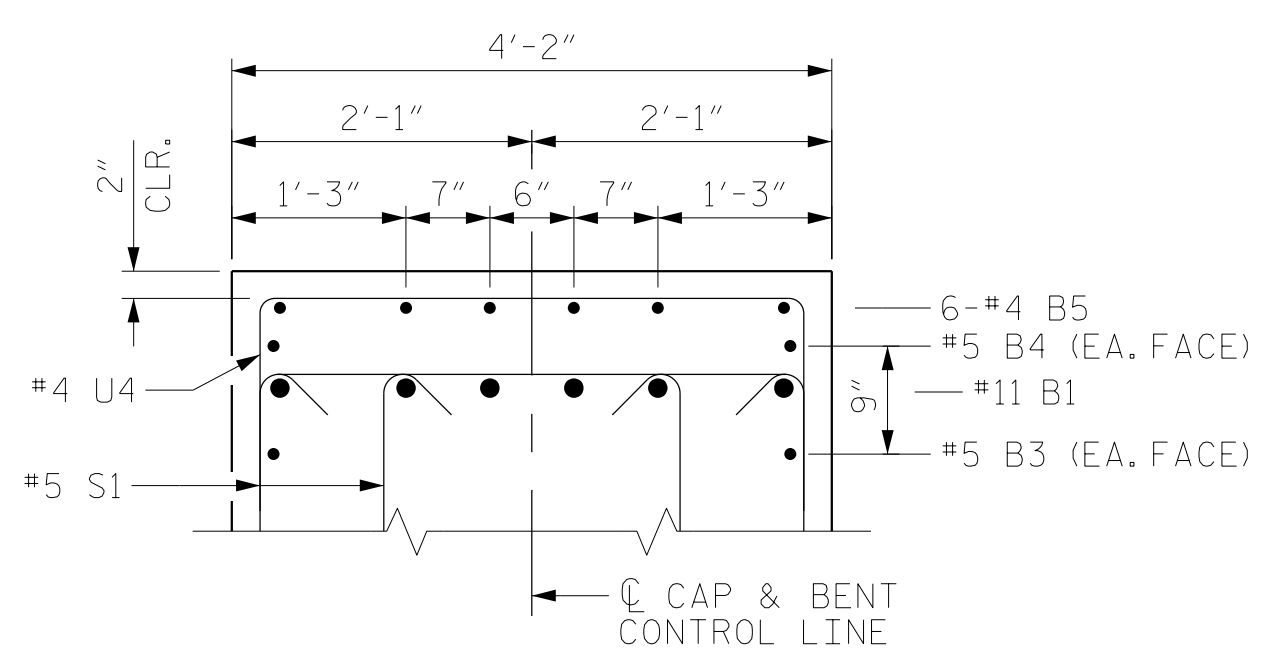
PLAN OF DRILED PIERS & COLUMNS



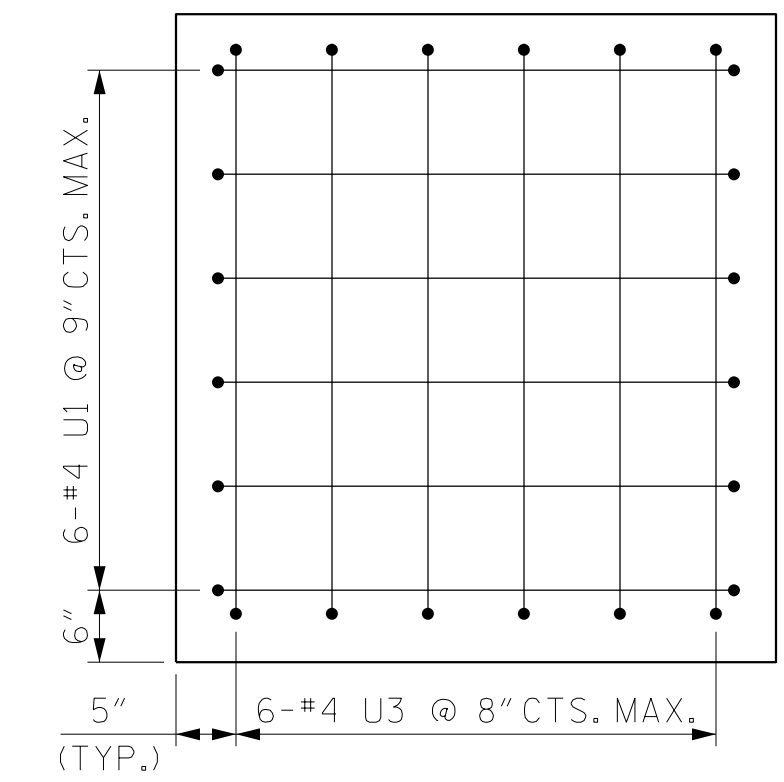
END ELEVATION



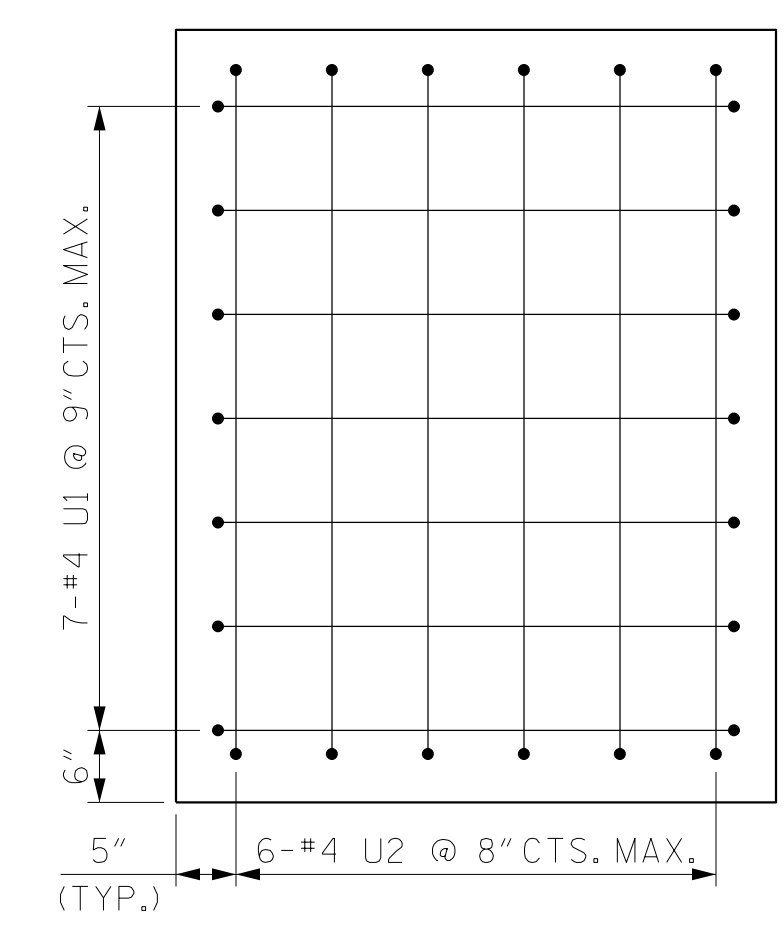
SECTION A-A



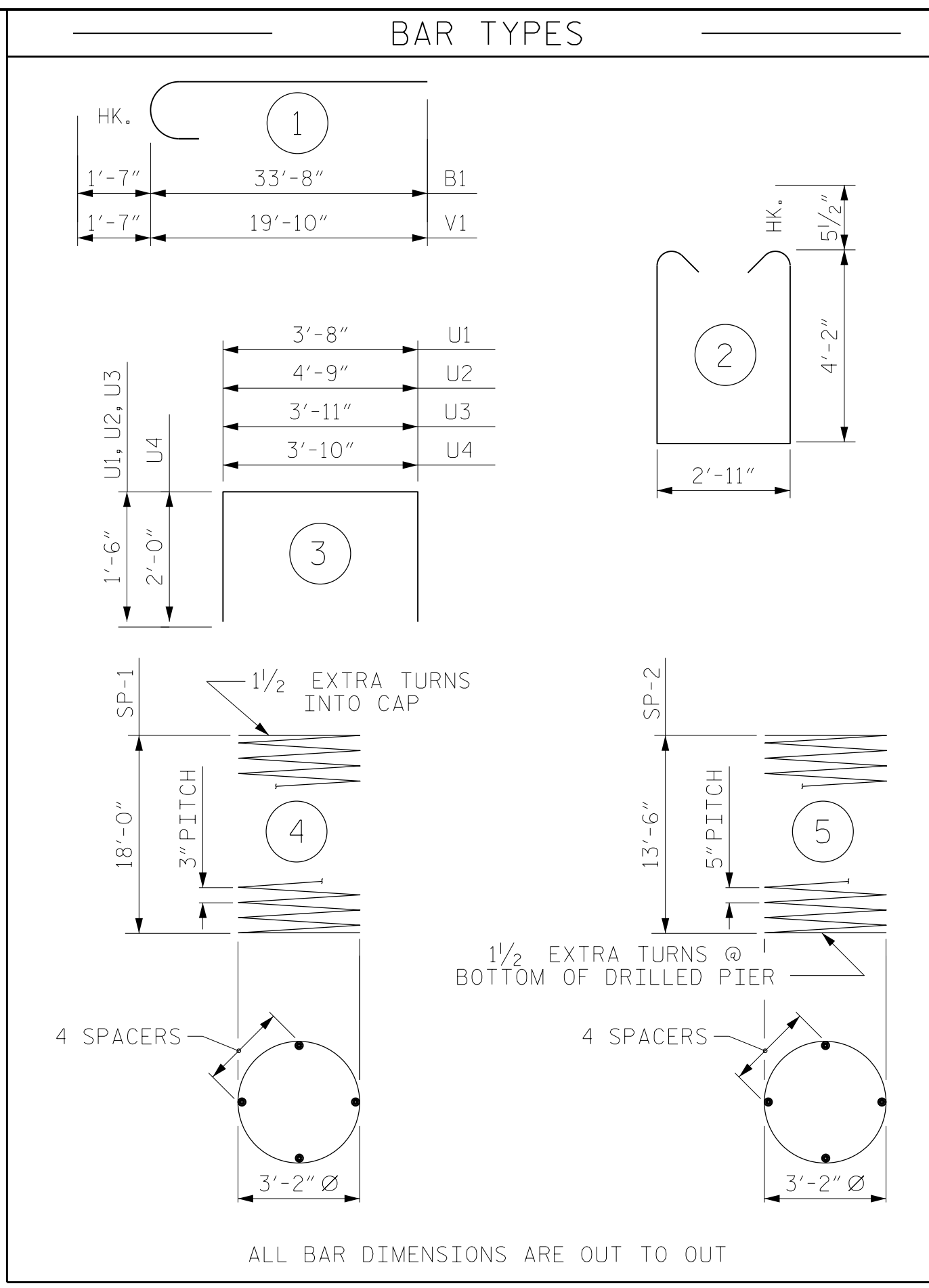
PARTIAL SECTION B-B



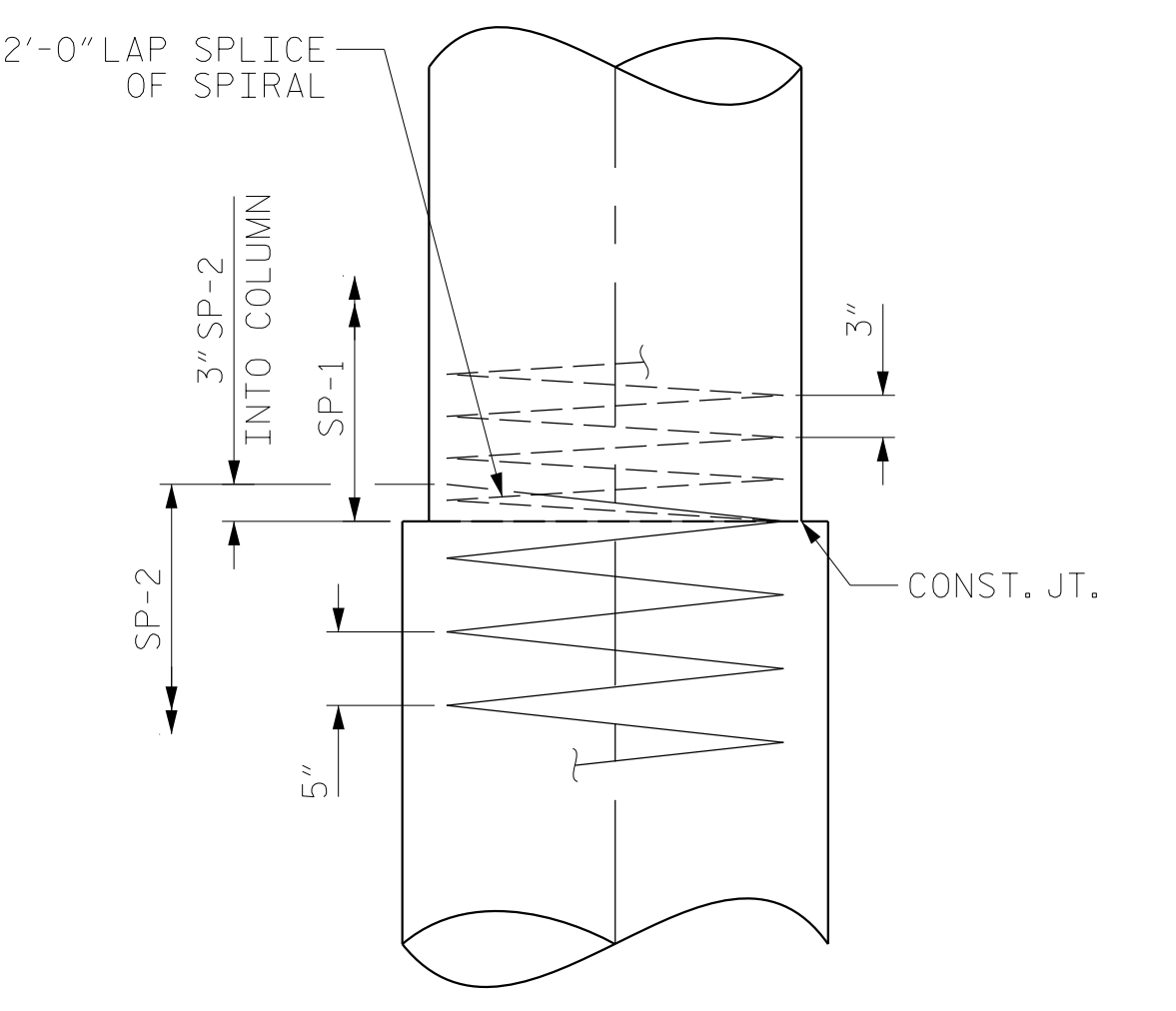
VIEW C-C



VIEW D-D



ALL BAR DIMENSIONS ARE OUT TO OUT



CONSTRUCTION JOINT DETAIL

BILL OF MATERIAL FOR BENT NO. 1B

BAR	NO.	SIZE	TYPE	LENGTH	WEIGHT
B1	12	#11	1	35'-3"	2247
B2	14	#11	STR	33'-9"	2510
B3	20	#5	STR	31'-6"	657
B4	2	#5	STR	26'-10"	56
B5	18	#4	STR	13'-8"	164
B6	6	#4	STR	4'-2"	17
M1	48	#11	STR	18'-7"	4739
S1	208	#5	2	12'-2"	2639
U1	13	#4	3	6'-8"	58
U2	6	#4	3	7'-9"	31
U3	6	#4	3	6'-11"	28
U4	63	#4	3	7'-10"	330
V1	48	#11	1	21'-5"	5462

REINFORCING STEEL (FOR BENT NO. 1B)					18,938 LBS.
SP-1	4	*	4	719'-5"	1922
SP-2	4	**	5	333'-0"	1389

SPIRAL COLUMN REINFORCING STEEL (FOR BENT NO. 1B)					3,311 LBS.
* THE SP-1 SPIRAL REINFORCING STEEL SHALL BE W20 OR D-20 COLD DRAWN WIRE OR #4 PLAIN OR DEFORMED BAR					
** THE SP-2 SPIRAL REINFORCING STEEL SHALL BE W31 OR D-31 COLD DRAWN WIRE OR #5 PLAIN OR DEFORMED BAR					

CLASS A CONCRETE BREAKDOWN (FOR BENT NO. 1B)				
POUR #2 (COLUMNS)	25.3	C.Y.		
POUR #3 (CAP)	46.1	C.Y.		
TOTAL CLASS A CONCRETE	71.4	C.Y.		

DRILLED PIERS: (FOR BENT NO. 1B)				
DRILLED PIER CONCRETE POUR #1 (DRILLED PIERS)	26.1	C.Y.		
4'-0" Ø DRILLED PIER NOT IN SOIL	56.0	LIN. FT.		
4'-0" Ø DRILLED PIER IN SOIL	0.0	LIN. FT.		
Δ CSL TUBES	248.0	LIN. FT.		

Δ NO SEPERATE PAYMENT WILL BE MADE FOR CSL TUBES, CSL TUBES WILL BE INCLUDED IN THE UNIT BID PRICE FOR DRILLED PIERS.

PROJECT NO. U-2579AB  
FORSYTH COUNTY  
 STATION: 30+67.66 -Y4-

SHEET 2 OF 2



STATE OF NORTH CAROLINA  
 DEPARTMENT OF TRANSPORTATION  
 RALEIGH  
 SUBSTRUCTURE  
 BENT NO. 1B  
 DETAILS

REVISIONS						SHEET NO.
NO.	BY:	DATE:	NO.	BY:	DATE:	TOTAL SHEETS
1			3			29
2			4			37

DRAWN BY : NSC DATE : 08/2019  
 CHECKED BY : JMR DATE : 09/2019  
 DESIGN ENGINEER OF RECORD: JMR DATE : 10/2019

DOCUMENT NOT CONSIDERED FINAL UNLESS ALL SIGNATURES COMPLETED