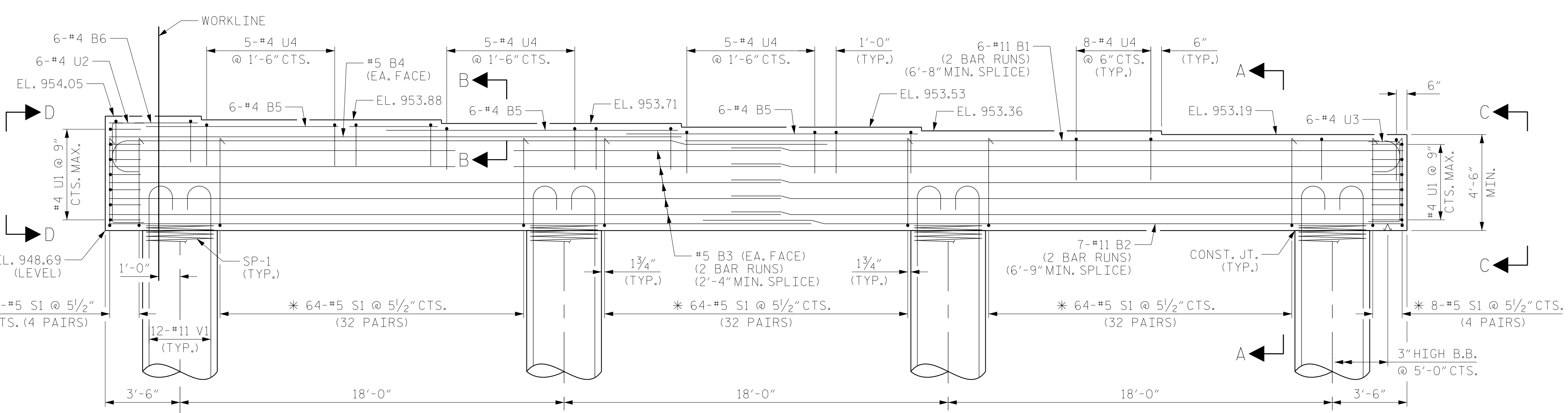
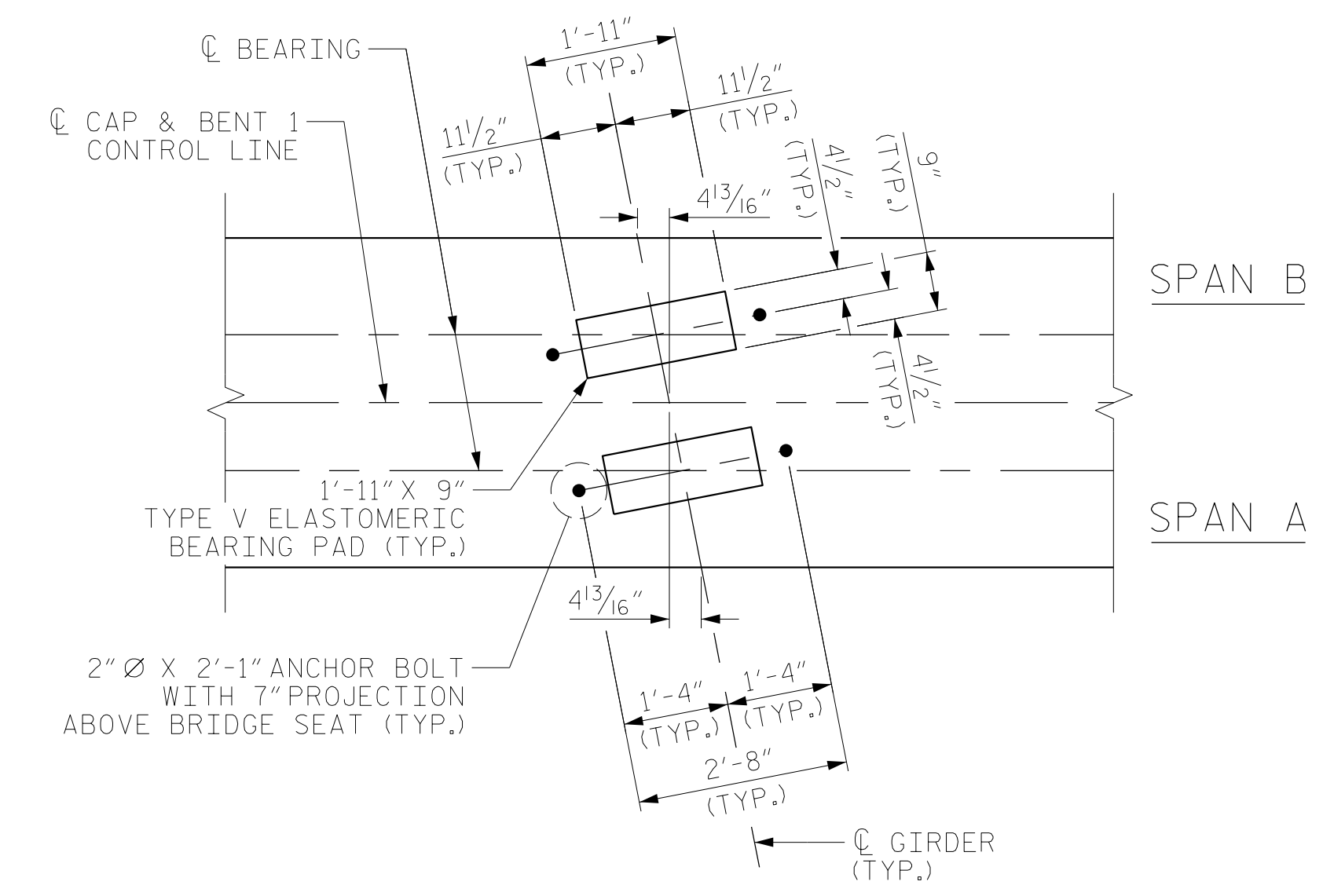


PLAN

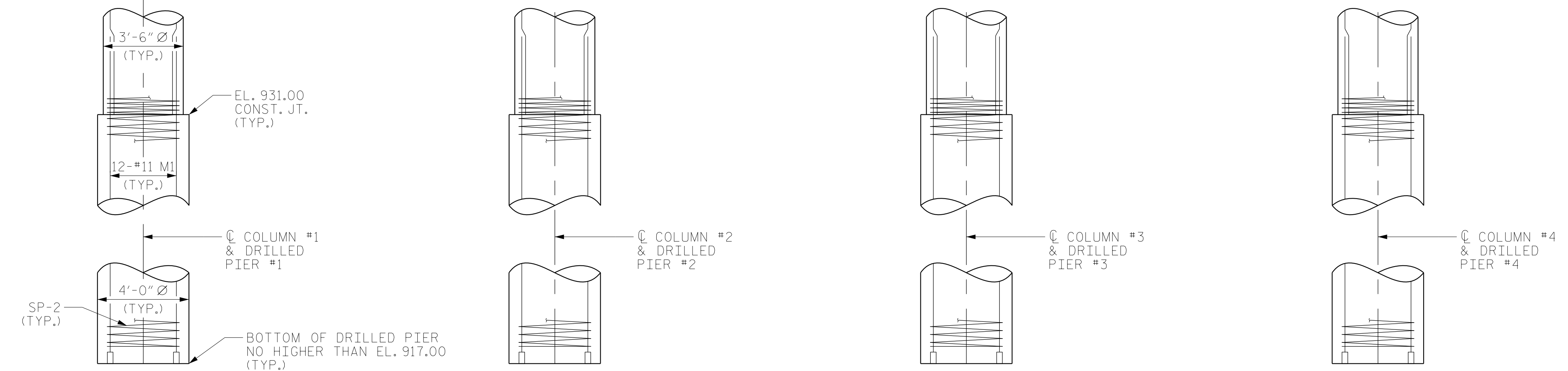


ELEVATION

**NOTES:**  
 FOR SECTION A-A, PARTIAL SECTION B-B, AND VIEW C-C AND D-D, SEE SHEET 2 OF 2.  
 FOR REINFORCING STEEL BILL OF MATERIAL, SEE SHEET 2 OF 2.  
 STIRRUPS AND #4 U4 BARS IN CAP MAY BE SHIFTED AS NECESSARY TO AVOID ANCHOR BOLTS.  
 HOOKS ON "V" BARS MAY BE TURNED AS NECESSARY FOR PLACING REINFORCING STEEL.  
 \* INVERT ALTERNATE #5 "S" STIRRUP PAIRS.  
 THE CONTRACTOR'S ATTENTION IS CALLED TO THE FACT THAT THE LONGITUDINAL REINFORCEMENT FOR THE DRILLED PIERS IS DETAILED WITH 3 FEET OF EXTRA LENGTH.  
 THE LOCATION OF THE CONSTRUCTION JOINT IN THE DRILLED PIERS IS BASED ON AN APPROXIMATE GROUND LINE ELEVATION. IF THE CONSTRUCTION JOINT IS ABOVE THE ACTUAL GROUND ELEVATION, THE CONTRACTOR SHALL PLACE THE CONSTRUCTION JOINT 1 FOOT BELOW THE GROUND LINE.



DETAIL "A"  
 DIMENSIONS ARE TYPICAL FOR EACH GIRDER



PROJECT NO. U-2579AB  
FORSYTH COUNTY  
 STATION: 30+67.66 -Y4-

SHEET 1 OF 2



**RS&H**  
 RS&H Architects-Engineers-Planners, Inc.  
 8521 Six Forks Road, Suite 400  
 919-926-4100 FAX 919-846-9080  
 www.rsandh.com  
 North Carolina License No. 50737-54037-C&E

STATE OF NORTH CAROLINA DEPARTMENT OF TRANSPORTATION RALEIGH						SHEET NO. S2-28	
SUBSTRUCTURE BENT NO. 1B						TOTAL SHEETS 37	
REVISIONS						SHEET NO.	
NO.	BY:	DATE:	NO.	BY:	DATE:	SHEET NO.	
1			3			S2-28	
2			4			TOTAL SHEETS 37	

DRAWN BY : NSC DATE : 08/2019  
 CHECKED BY : JMR DATE : 09/2019  
 DESIGN ENGINEER OF RECORD: JMR DATE : 10/2019

DOCUMENT NOT CONSIDERED  
 FINAL UNLESS ALL  
 SIGNATURES COMPLETED