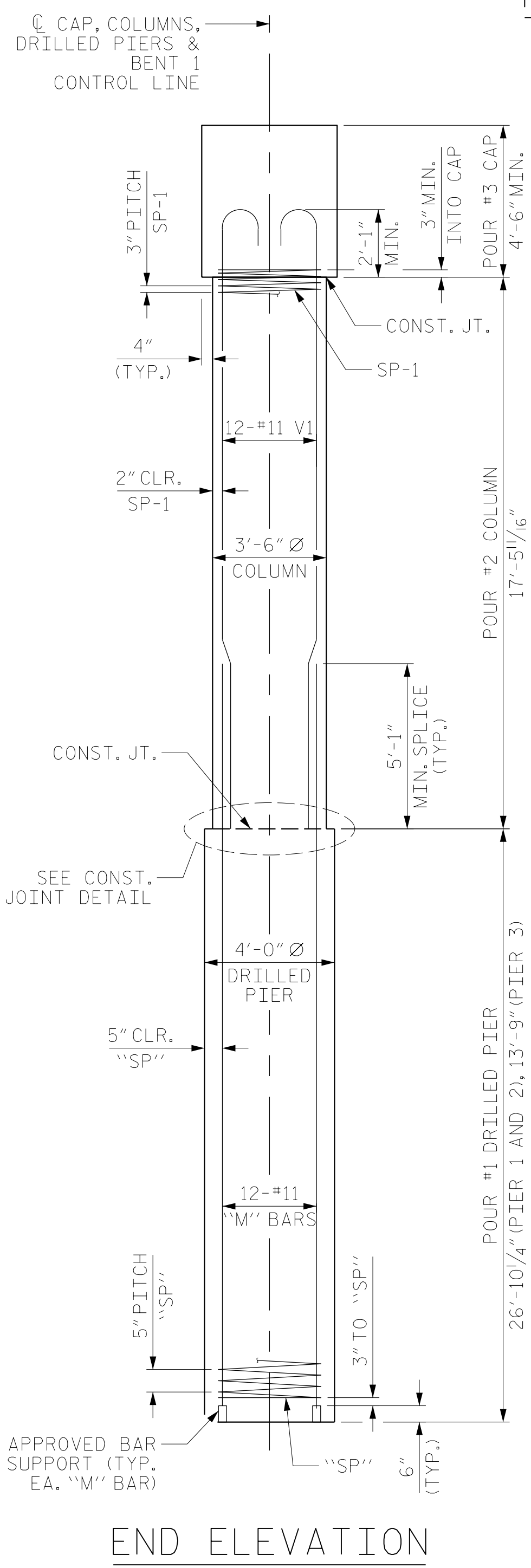
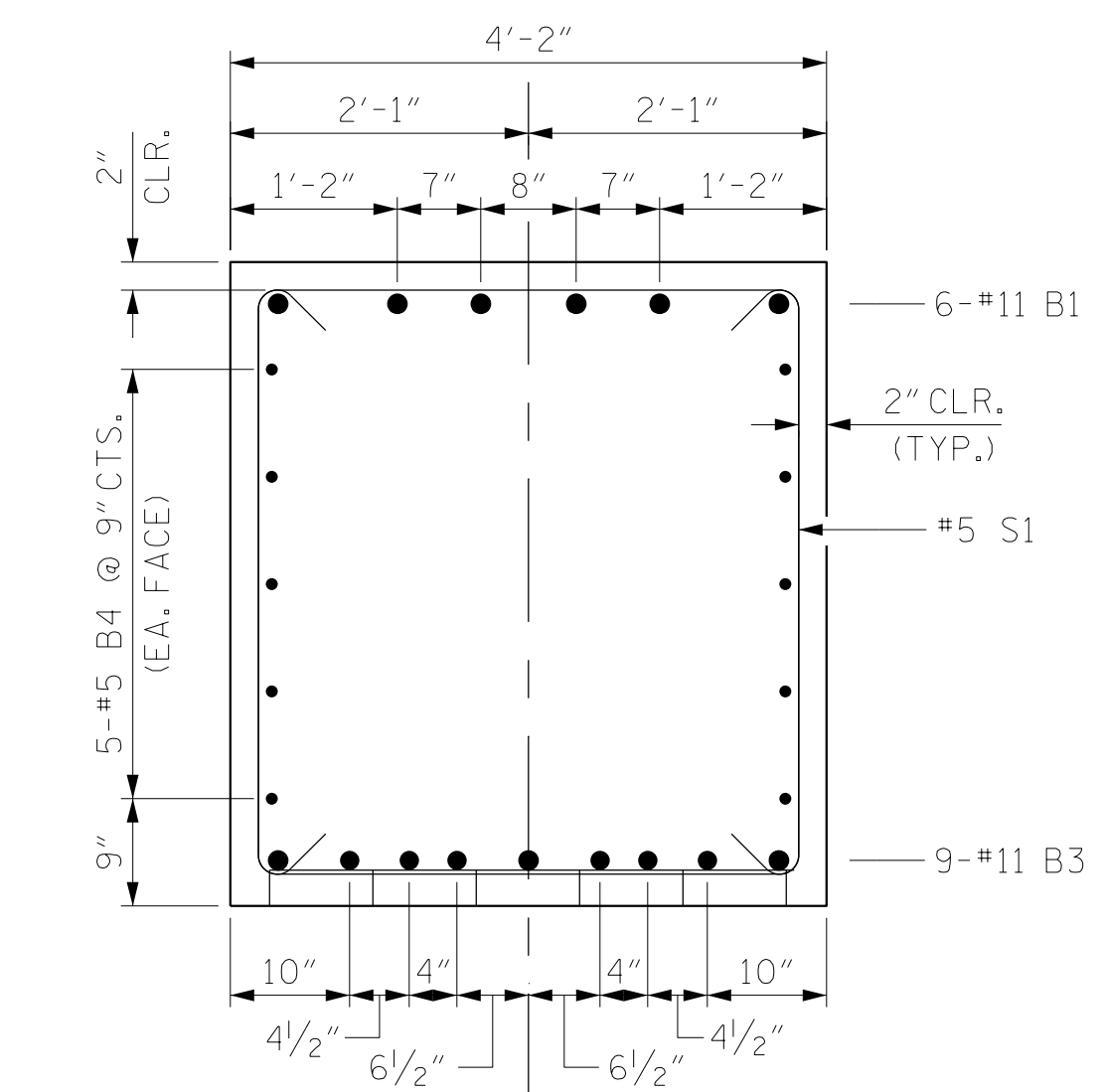


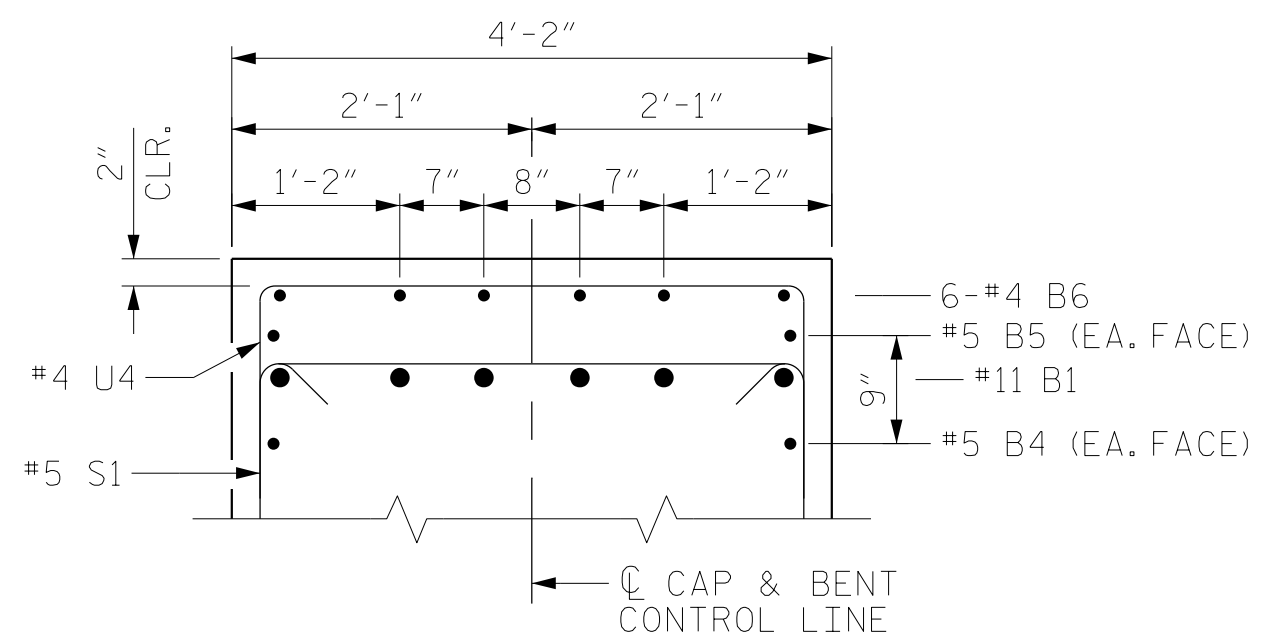
PLAN OF DRILED PIERS & COLUMNS



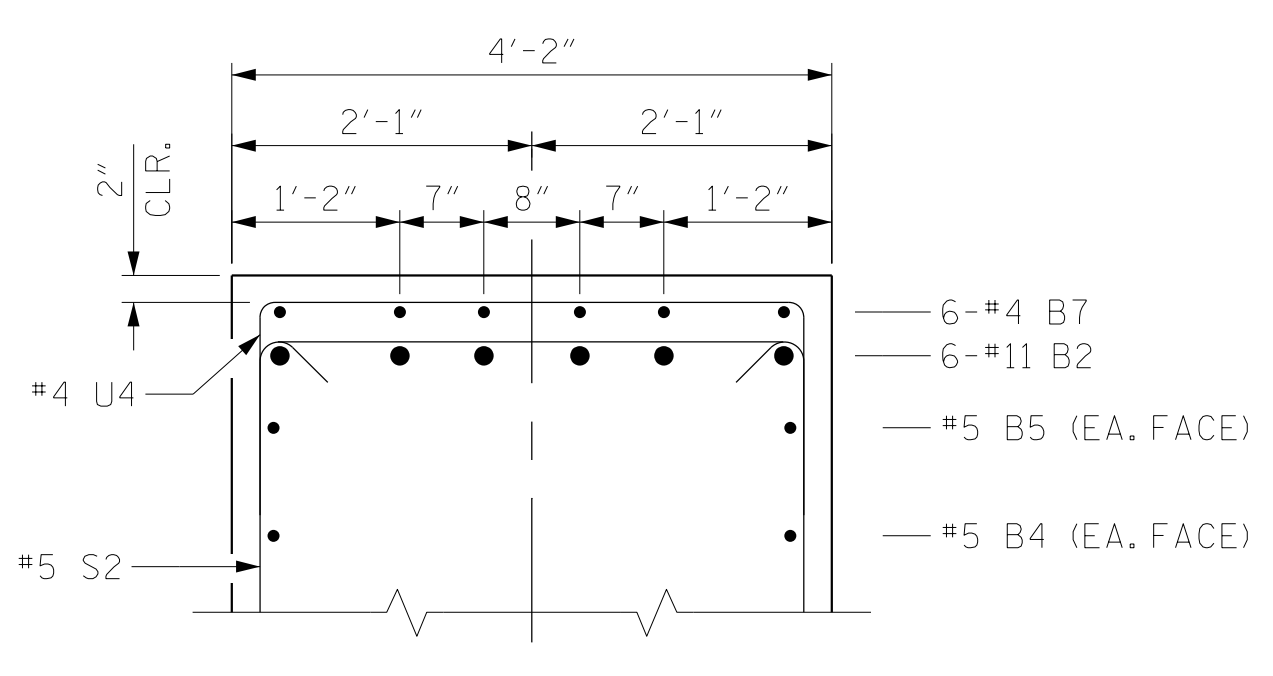
END ELEVATION



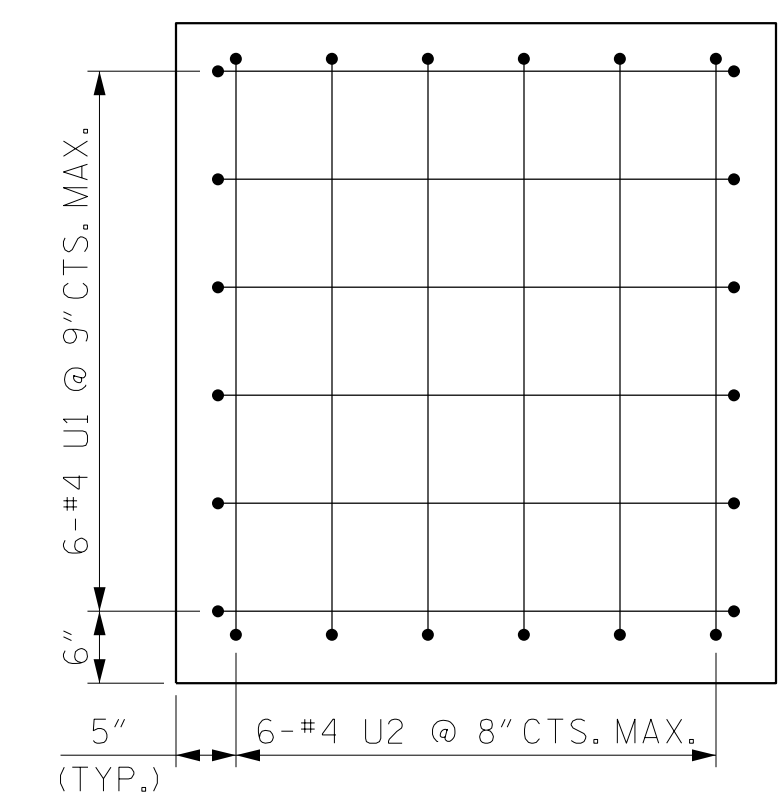
SECTION A-A



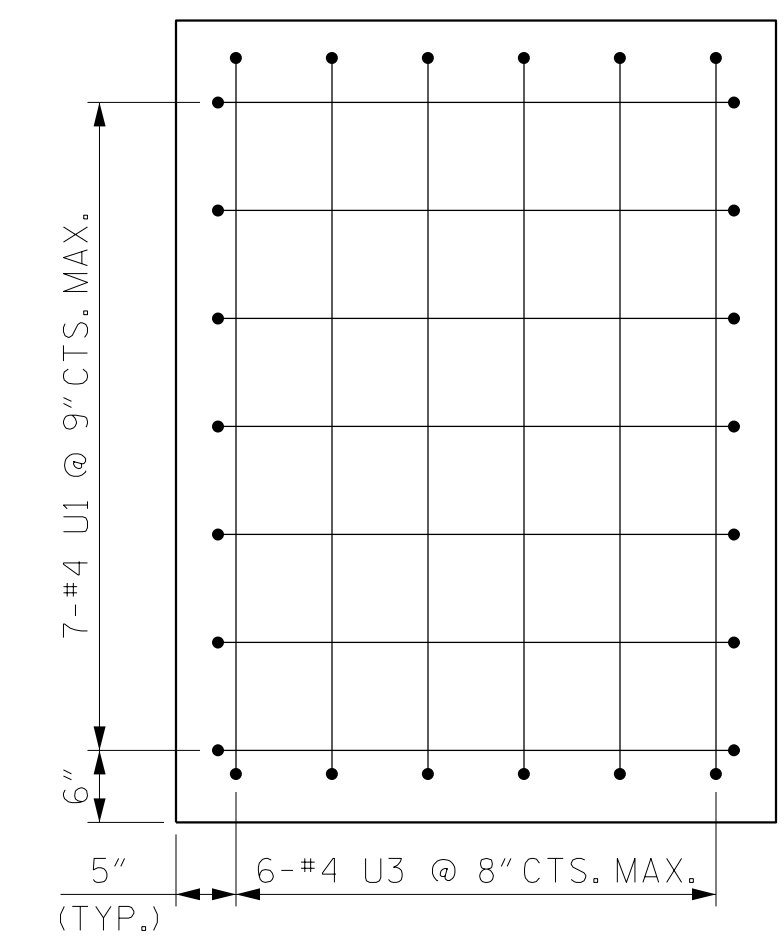
PARTIAL SECTION B-B



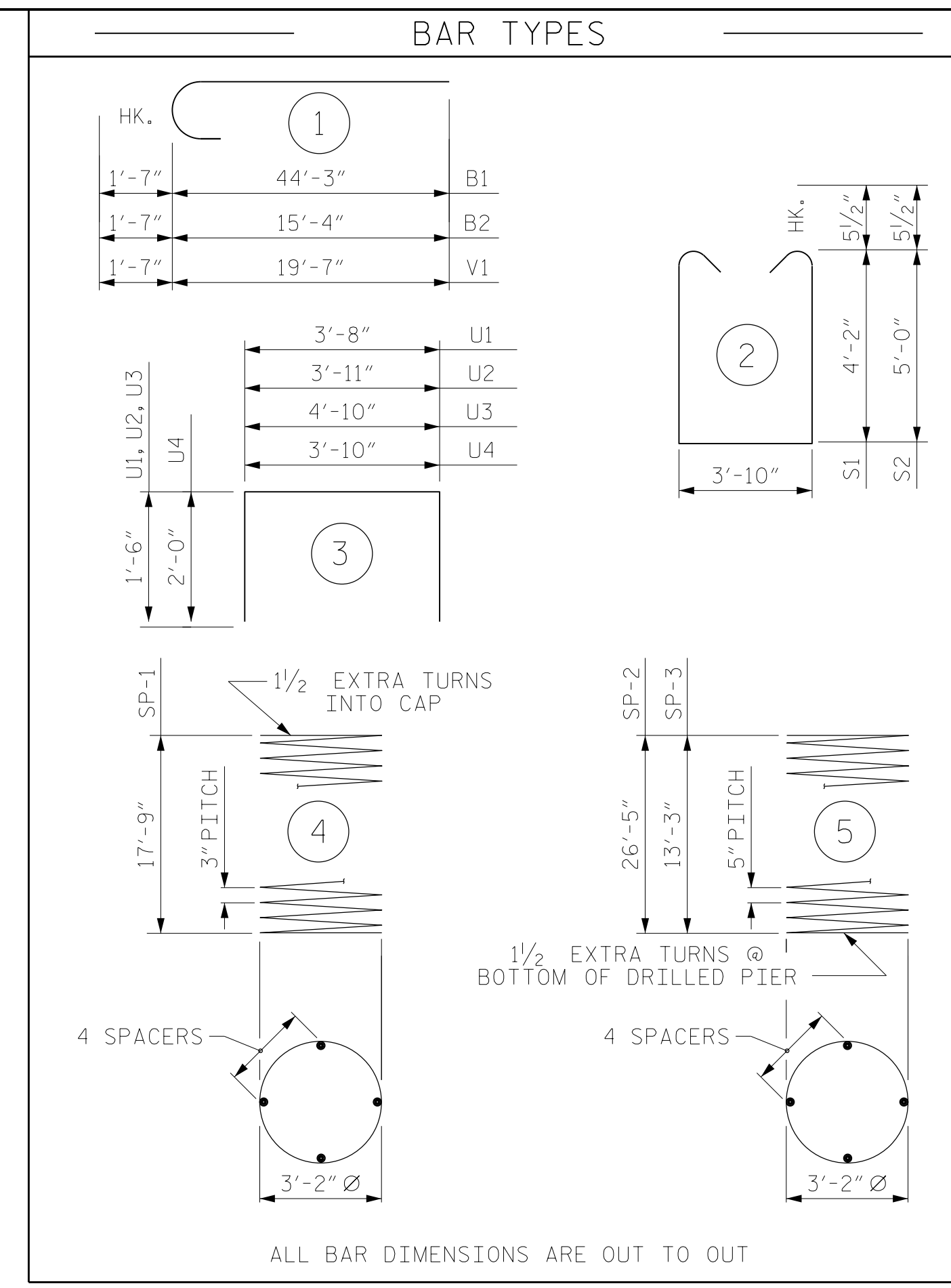
PARTIAL SECTION C-C



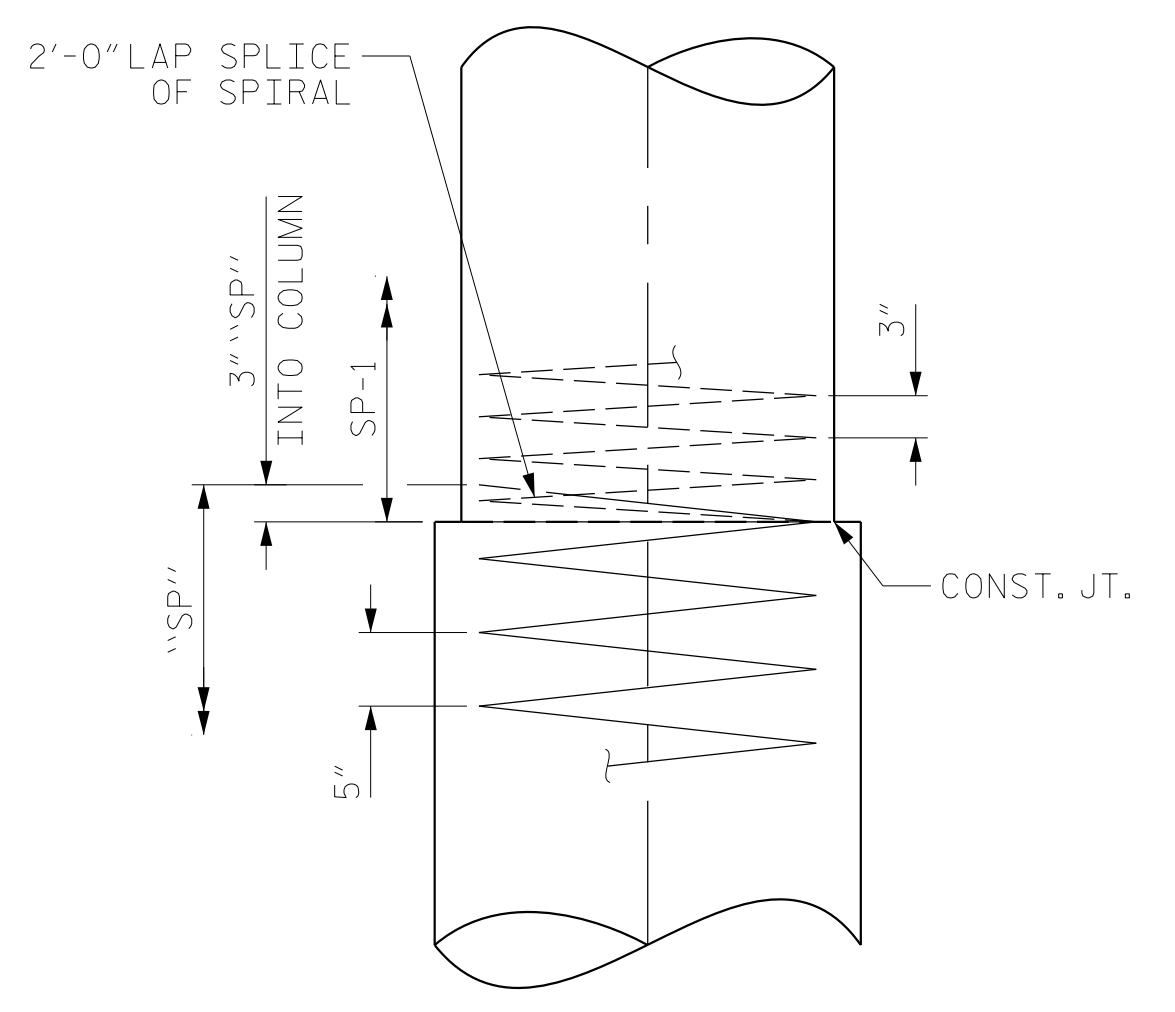
VIEW D-D



VIEW E-E



ALL BAR DIMENSIONS ARE OUT TO OUT



CONSTRUCTION JOINT DETAIL

BILL OF MATERIAL FOR BENT NO. 1A

| BAR | NO. | SIZE | TYPE | LENGTH  | WEIGHT |
|-----|-----|------|------|---------|--------|
| B1  | 6   | #11  | 1    | 45'-10" | 1461   |
| B2  | 6   | #11  | 1    | 16'-11" | 539    |
| B3  | 9   | #11  | STR  | 49'-8"  | 2375   |
| B4  | 10  | #5   | STR  | 49'-8"  | 518    |
| B5  | 2   | #5   | STR  | 26'-11" | 56     |
| B6  | 12  | #4   | STR  | 13'-8"  | 110    |
| B7  | 6   | #4   | STR  | 4'-3"   | 17     |
|     |     |      |      |         |        |
| M1  | 24  | #11  | STR  | 31'-5"  | 4006   |
| M2  | 12  | #11  | STR  | 18'-4"  | 1169   |
|     |     |      |      |         |        |
| S1  | 43  | #5   | 2    | 13'-1"  | 587    |
| S2  | 19  | #5   | 2    | 14'-9"  | 292    |
|     |     |      |      |         |        |
| U1  | 13  | #4   | 3    | 6'-8"   | 58     |
| U2  | 6   | #4   | 3    | 6'-11"  | 28     |
| U3  | 6   | #4   | 3    | 7'-10"  | 31     |
| U4  | 50  | #4   | 3    | 7'-10"  | 262    |
|     |     |      |      |         |        |
| V1  | 36  | #11  | 1    | 21'-2"  | 4049   |

| REINFORCING STEEL (FOR BENT NO. 1A) |   |    |   |         | 15,558 LBS. |
|-------------------------------------|---|----|---|---------|-------------|
| SP-1                                | 3 | *  | 4 | 709'-7" | 1422        |
| SP-2                                | 2 | ** | 5 | 634'-2" | 1323        |
| SP-3                                | 1 | ** | 5 | 325'-8" | 340         |

| SPIRAL COLUMN REINFORCING STEEL (FOR BENT NO. 1A)  |  |  |  |  | 3,085 LBS. |
|--|--|--|--|--|------------|
| * THE SP-1 SPIRAL REINFORCING STEEL SHALL BE W20 OR D-20 COLD DRAWN WIRE OR #4 PLAIN OR DEFORMED BAR           |  |  |  |  |            |
| ** THE SP-2 AND SP-3 SPIRAL REINFORCING STEEL SHALL BE W31 OR D-31 COLD DRAWN WIRE OR #5 PLAIN OR DEFORMED BAR |  |  |  |  |            |

| CLASS A CONCRETE BREAKDOWN (FOR BENT NO. 1A) |  |                  |
|--|--|------------------|
| POUR #2 (COLUMNS)                            |  | 18.7 C.Y.        |
| POUR #3 (CAP)                                |  | 38.3 C.Y.        |
| <b>TOTAL CLASS A CONCRETE</b>                |  | <b>57.0 C.Y.</b> |

| DRILLED PIERS: (FOR BENT NO. 1A)              |  |                |
|---|--|----------------|
| DRILLED PIER CONCRETE POUR #1 (DRILLED PIERS) |  | 31.4 C.Y.      |
| 4'-0" Ø DRILLED PIER NOT IN SOIL              |  | 39.0 LIN. FT.  |
| 4'-0" Ø DRILLED PIER IN SOIL                  |  | 28.5 LIN. FT.  |
| Δ CSL TUBES                                   |  | 287.8 LIN. FT. |

Δ NO SEPARATE PAYMENT WILL BE MADE FOR CSL TUBES. CSL TUBES WILL BE INCLUDED IN THE UNIT BID PRICE FOR DRILLED PIERS.

PROJECT NO. U-2579AB  
FORSYTH COUNTY  
 STATION: 30+67.66 -Y4-

SHEET 2 OF 2

| REVISIONS |     |       |     |     |       | SHEET NO.    |
|-----------|-----|-------|-----|-----|-------|--------------|
| NO.       | BY: | DATE: | NO. | BY: | DATE: | S2-27        |
| 1         |     |       | 3   |     |       | TOTAL SHEETS |
| 2         |     |       | 4   |     |       | 37           |

DOCUMENT NOT CONSIDERED FINAL UNLESS ALL SIGNATURES COMPLETED

|                            |     |        |         |
|----------------------------|-----|--------|---------|
| DRAWN BY :                 | NSC | DATE : | 08/2019 |
| CHECKED BY :               | JMR | DATE : | 09/2019 |
| DESIGN ENGINEER OF RECORD: | JMR | DATE : | 10/2019 |