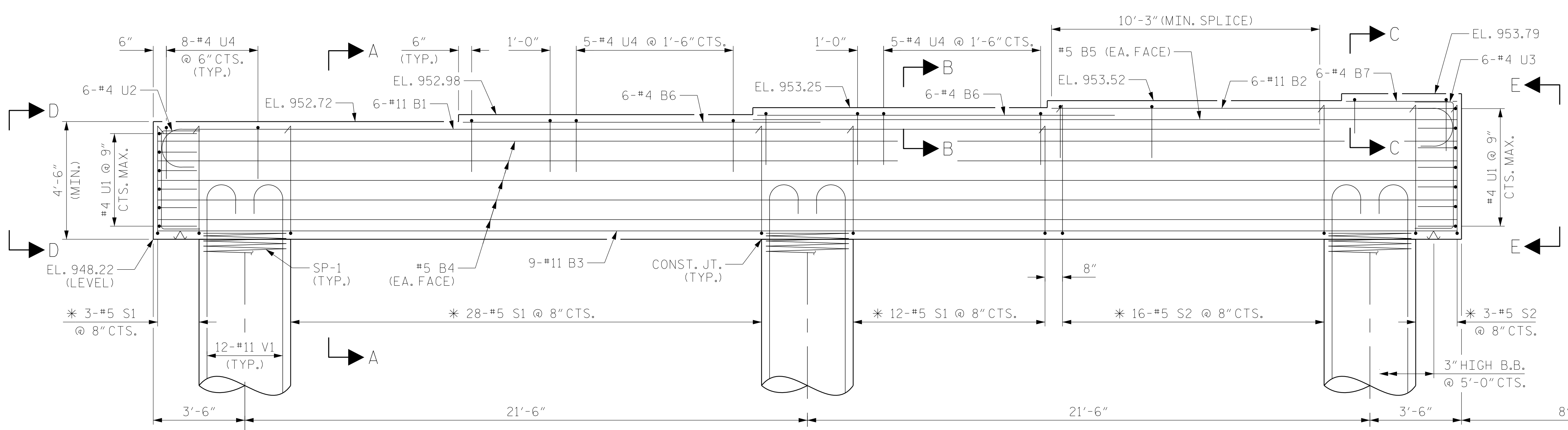
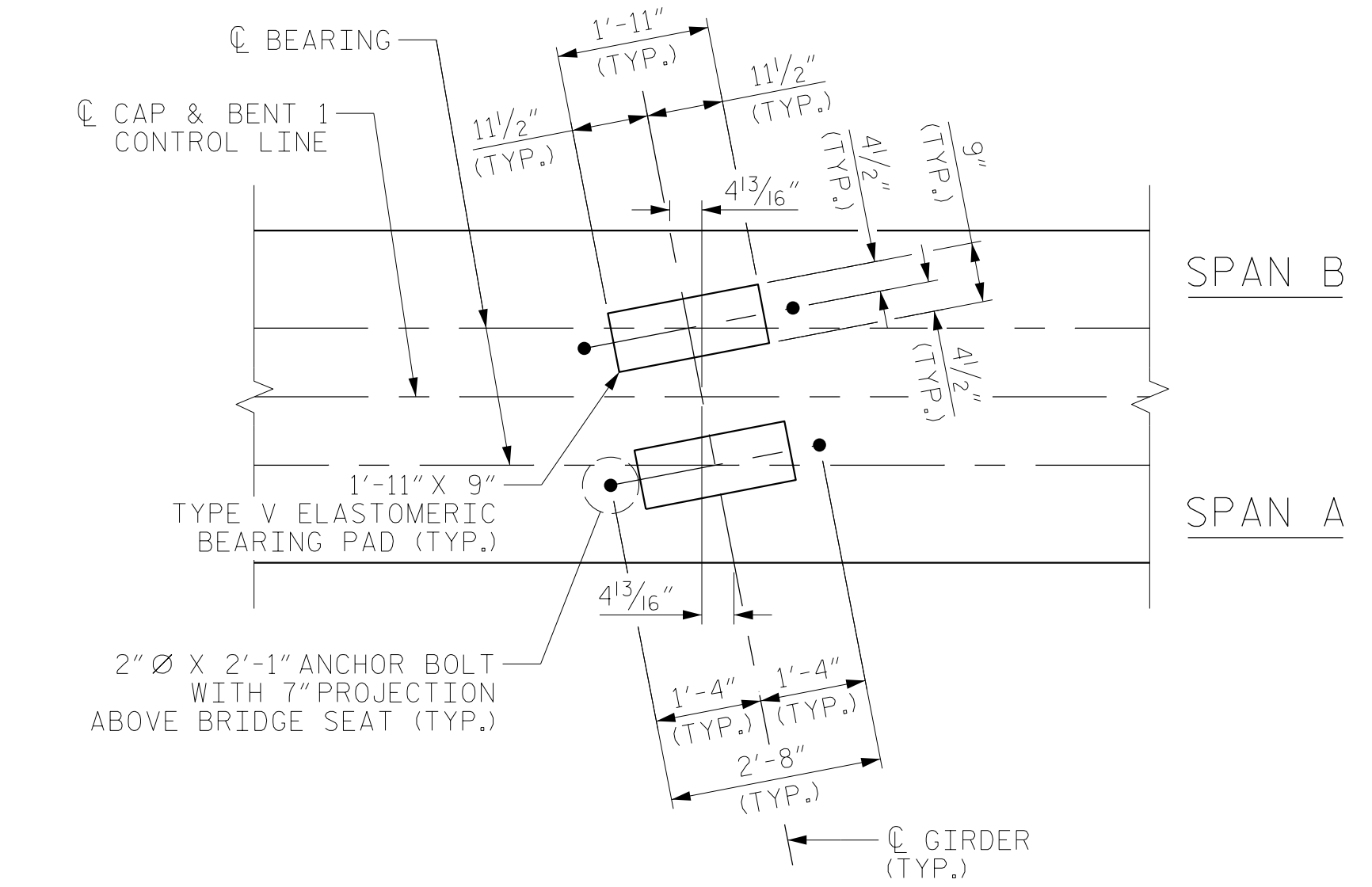


PLAN



ELEVATION



DETAIL "A"
DIMENSIONS ARE TYPICAL FOR EACH GIRDER

NOTES:

- FOR SECTION A-A, PARTIAL SECTION B-B AND C-C, AND VIEW D-D AND E-E, SEE SHEET 2 OF 2.
- FOR REINFORCING STEEL BILL OF MATERIAL, SEE SHEET 2 OF 2.
- STIRRUPS AND #4 U4 BARS IN CAP MAY BE SHIFTED AS NECESSARY TO AVOID ANCHOR BOLTS.
- HOOKS ON "V" BARS MAY BE TURNED AS NECESSARY FOR PLACING REINFORCING STEEL.
- THE CONTRACTOR'S ATTENTION IS CALLED TO THE FACT THAT THE LONGITUDINAL REINFORCEMENT FOR THE DRILLED PIERS IS DETAILED WITH 3 FEET OF EXTRA LENGTH.
- * INVERT ALTERNATE #5 "S" STIRRUPS.
- THE LOCATION OF THE CONSTRUCTION JOINT IN THE DRILLED PIERS IS BASED ON AN APPROXIMATE GROUND LINE ELEVATION. IF THE CONSTRUCTION JOINT IS ABOVE THE ACTUAL GROUND ELEVATION, THE CONTRACTOR SHALL PLACE THE CONSTRUCTION JOINT 1 FOOT BELOW THE GROUND LINE.

PROJECT NO. U-2579AB
FORSYTH COUNTY
 STATION: 30+67.66 -Y4-

SHEET 1 OF 2



RS&H
 RS&H Architects-Engineers-Planners, Inc.
 8521 Six Forks Road, Suite 400
 919-926-4100 FAX 919-846-9080
 www.rsandh.com
 North Carolina License No. 50737-54037-C&E

STATE OF NORTH CAROLINA DEPARTMENT OF TRANSPORTATION RALEIGH						SHEET NO.	
SUBSTRUCTURE BENT NO. 1A						S2-26	
REVISIONS						TOTAL SHEETS	
NO.	BY:	DATE:	NO.	BY:	DATE:	37	
1			3				
2			4				

DRAWN BY : NSC DATE : 08/2019
 CHECKED BY : JMR DATE : 09/2019
 DESIGN ENGINEER OF RECORD: JMR DATE : 10/2019

DOCUMENT NOT CONSIDERED
 FINAL UNLESS ALL
 SIGNATURES COMPLETED