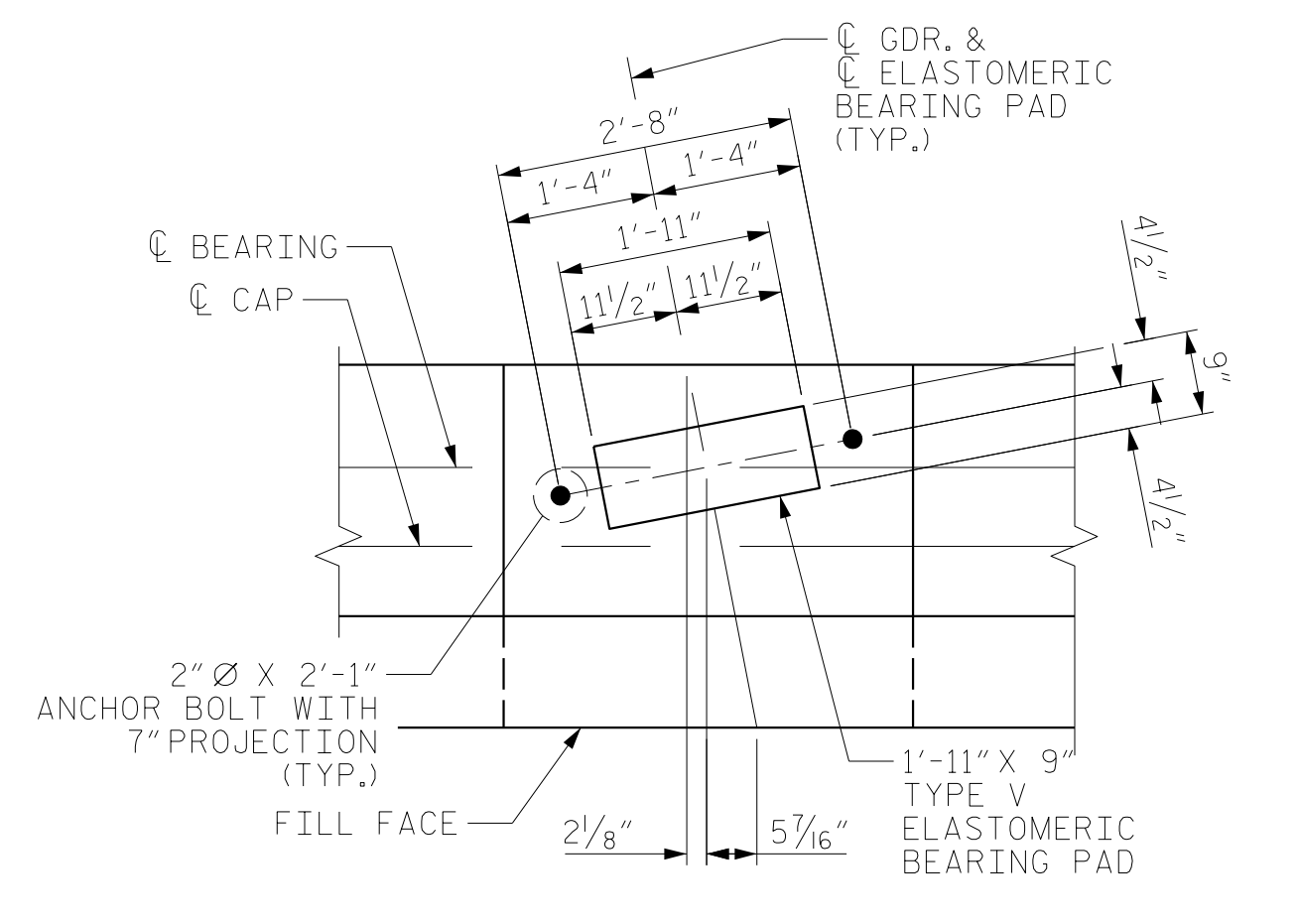
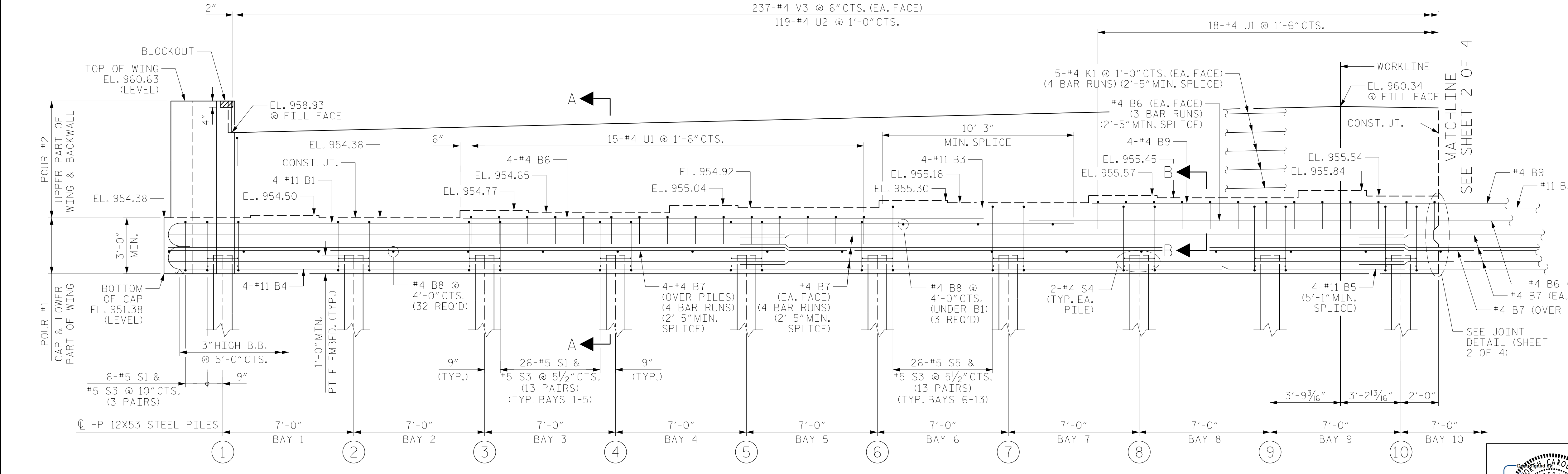


PARTIAL PLAN

NOTES:
 FOR SECTION A-A AND PARTIAL SECTION B-B, SEE SHEET 4 OF 4.
 FOR PILE SPLICE DETAILS, SEE SHEET 4 OF 4.
 STIRRUPS AND U1 BARS IN CAP MAY BE SHIFTED, AS NECESSARY, TO CLEAR ANCHOR BOLTS
 BACKWALL SHALL BE PLACED BEFORE APPLYING THE EPOXY PROTECTIVE COATING.
 THE TOP SURFACE OF THE END BENT CAP SHALL BE CURED IN ACCORDANCE WITH THE STANDARD SPECIFICATIONS, EXCEPT THE MEMBRANE CURING COMPOUND METHOD SHALL NOT BE USED.
 THE TOP SURFACE AREA OF THE END BENT CAP EXCEPT THE BRIDGE SEAT BUILDUPS SHALL BE SLOPED TRANSVERSELY FROM THE FILL FACE TO THE BACK FACE AT THE RATE OF 2%.
 THE CONCRETE IN THE SHADED AREA OF THE WING SHALL BE POURED AFTER THE JOINT BETWEEN THE DECK AND THE APPROACH SLAB HAS BEEN SAWED AND THE CONCRETE BARRIER WALLS ARE CAST IF SLIP FORMING IS USED.
 STIRRUPS NEAR SKEWED ENDS MAY BE SKEWED TO FIT TO ENSURE CONCRETE CLEARANCES.



DETAIL "A"



PARTIAL ELEVATION

PROJECT NO. U-2579AB
FORSYTH COUNTY
 STATION: 30+67.66 -Y4-

SHEET 1 OF 4

DRAWN BY : MRA DATE : 08/2019
 CHECKED BY : JMR DATE : 09/2019
 DESIGN ENGINEER OF RECORD: JMR DATE : 10/2019

10/14/2021
 X:\P1031785002 U-2579AB WS North Beltway\Design\Structures\CAD\Site 2\402.043.U2579AB.SMU.E1.S-22.330723.dgn
 CuanyN

DOCUMENT NOT CONSIDERED
 FINAL UNLESS ALL
 SIGNATURES COMPLETED



RS&H
 RS&H Architects-Engineers-Planners, Inc.
 8521 Six Forks Road, Suite 400
 919-926-4100 FAX 919-846-9080
 www.rsandh.com
 North Carolina License No. 50737-F0403-C&E

STATE OF NORTH CAROLINA DEPARTMENT OF TRANSPORTATION RALEIGH					
SUBSTRUCTURE					
END BENT 1 PARTIAL PLAN AND ELEVATION					
REVISIONS					
NO.	BY:	DATE:	NO.	BY:	DATE:
1			3		
2			4		
SHEET NO.					S2-22
TOTAL SHEETS					37