

BAR TYPES

ALL BAR DIMENSIONS ARE OUT TO OUT

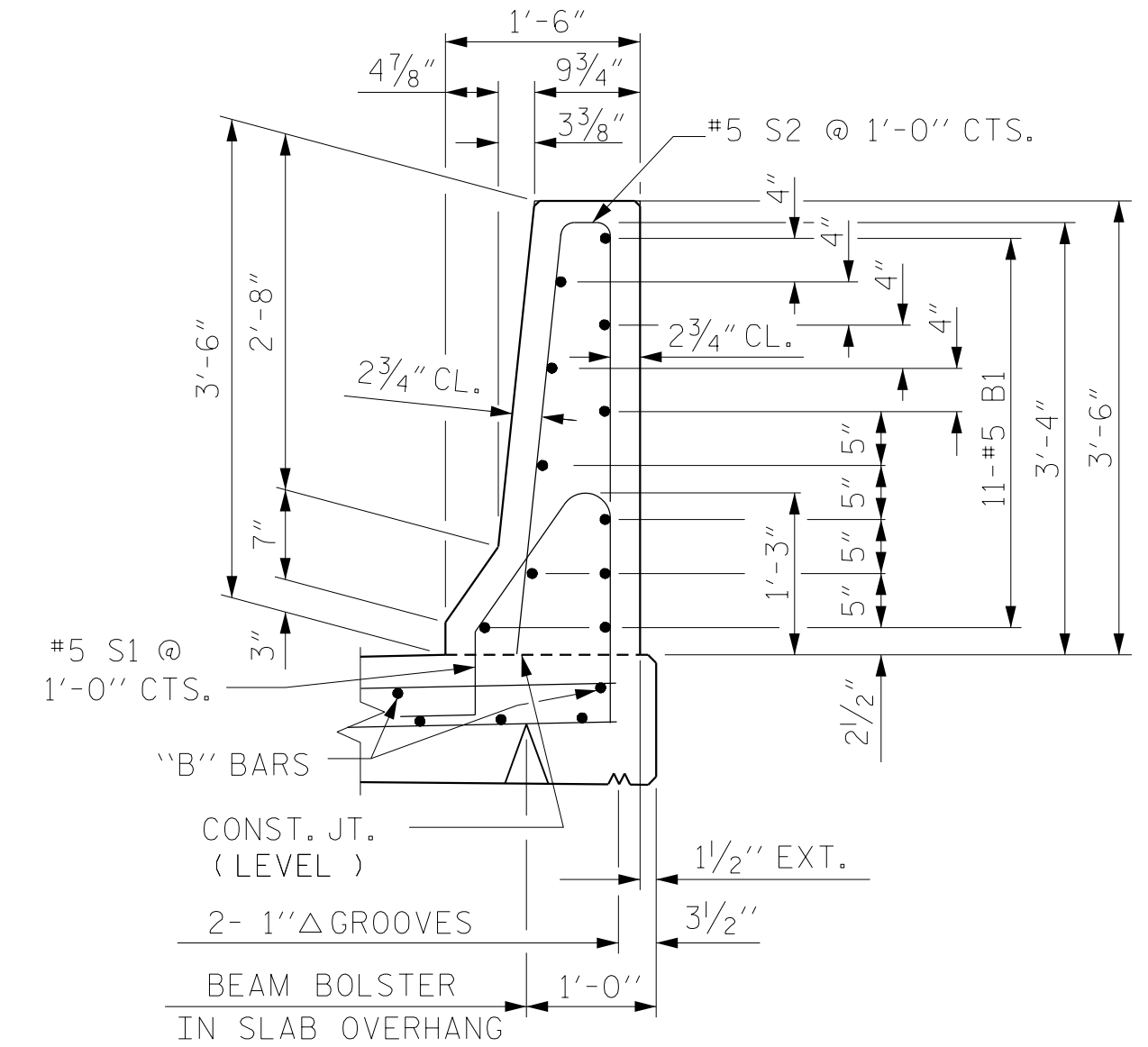
BILL OF MATERIAL
FOR CONCRETE BARRIER RAIL ONLY

BAR	NO.	SIZE	TYPE	LENGTH	WEIGHT
* B1	132	#5	STR	26'-6"	3648
* S1	324	#5	1	4'-9"	1605
* S2	324	#5	2	7'-0"	2366

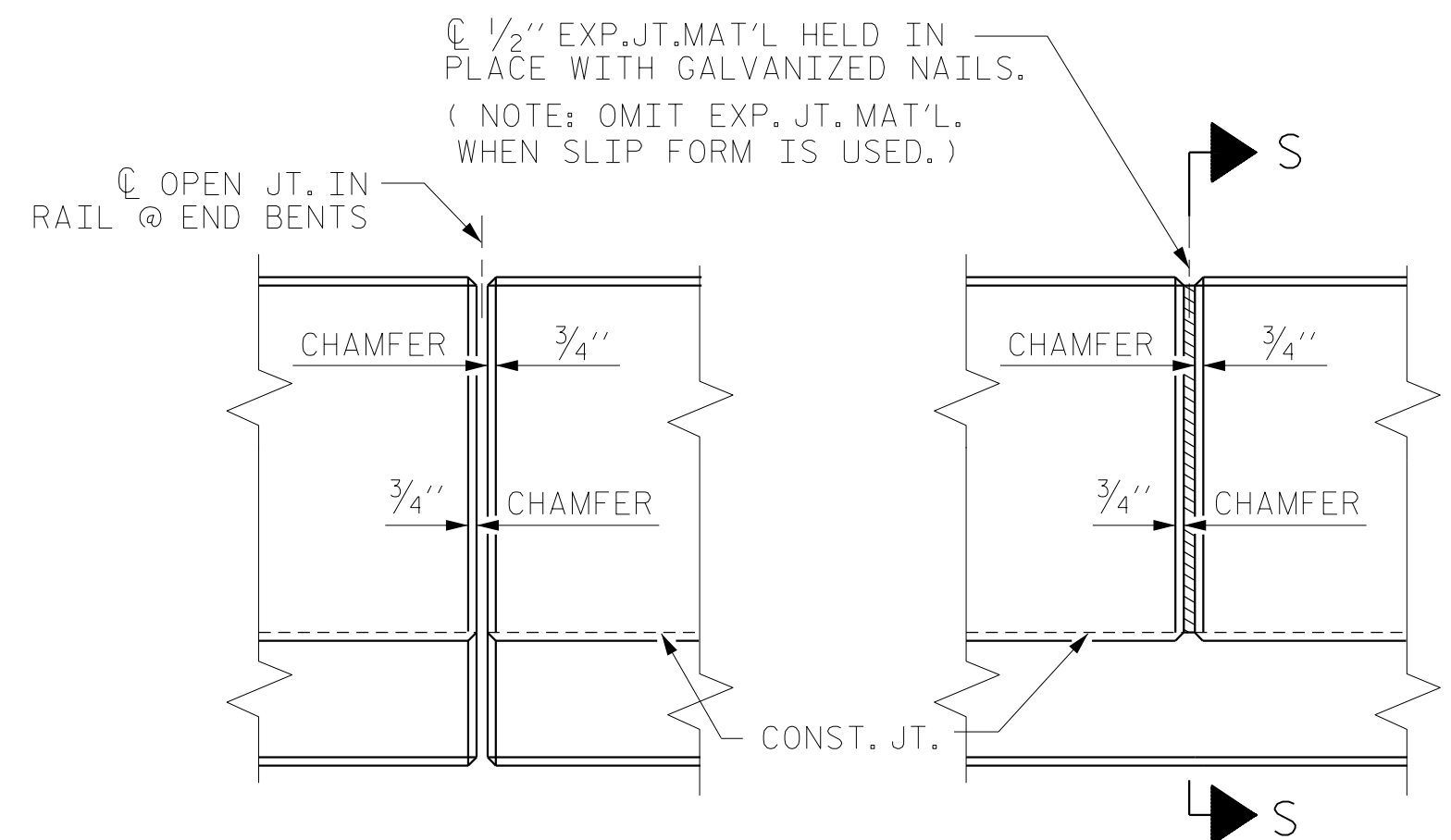
* EPOXY COATED REINFORCING STEEL 7,619 LBS.
CLASS AA CONCRETE 44.0 CU. YDS.
CONCRETE BARRIER RAIL 323.5 LIN. FT.

PLAN OF BARRIER RAIL

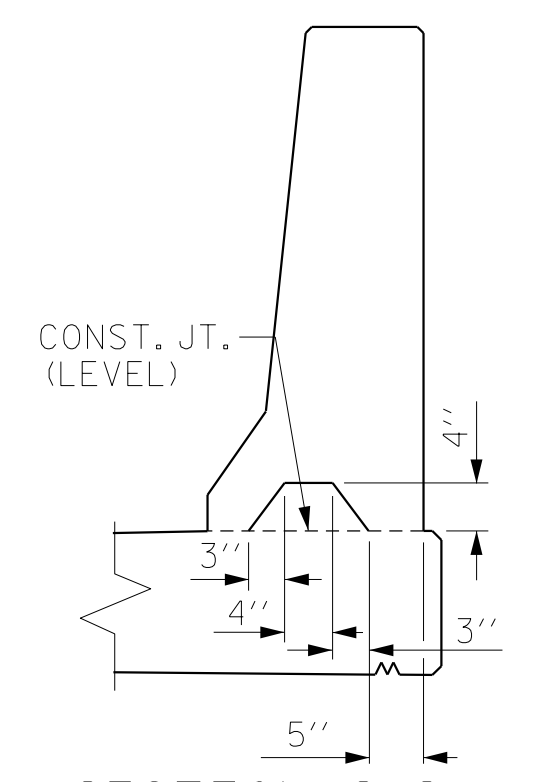
PARAPET NOT SHOWN FOR CLARITY



SECTION THRU RAIL



ELEVATION AT EXPANSION JOINTS
BARRIER RAIL DETAILS



SECTION S-S
AT DAM IN OPEN JOINT
(THIS IS TO BE USED ONLY WHEN SLIP FORM IS USED)

NOTES

THE BARRIER RAIL IN EACH SPAN SHALL NOT BE CAST UNTIL ALL SLAB CONCRETE IN THAT SPAN HAS BEEN CAST AND HAS REACHED A MINIMUM COMPRESSIVE STRENGTH OF 3,000 PSI.

ALL REINFORCING STEEL IN BARRIER RAILS SHALL BE EPOXY COATED.

GROOVED CONTRACTION JOINTS, 1/2" IN DEPTH, SHALL BE TOOLED IN ALL EXPOSED FACES OF THE BARRIER RAIL AND IN ACCORDANCE WITH ARTICLE 825-10(B) OF THE STANDARD SPECIFICATIONS. THE CONTRACTION JOINT SHALL BE LOCATED AT EACH THIRD POINT BETWEEN BARRIER RAIL EXPANSION JOINTS. ONLY ONE CONTRACTION JOINT IS REQUIRED AT MIDPOINT OF BARRIER RAIL SEGMENTS LESS THAN 20 FEET IN LENGTH AND NO CONTRACTION JOINTS ARE REQUIRED FOR THOSE SEGMENTS LESS THAN 10 FEET IN LENGTH.

PROJECT NO. U-2579AB
FORSYTH COUNTY
STATION: 30+67.66 -Y4-



RS&H
RS&H Architects-Engineers-Planners, Inc.
8521 Six Forks Road, Suite 400
919-926-4100 FAX 919-846-9080
www.rsandh.com
North Carolina License No. 50737-50403-1-C&B

STATE OF NORTH CAROLINA
DEPARTMENT OF TRANSPORTATION
RALEIGH
SUPERSTRUCTURE
CONCRETE
BARRIER RAIL

REVISIONS						SHEET NO.
NO.	BY:	DATE:	NO.	BY:	DATE:	S2-15
1			3			TOTAL SHEETS
2			4			37

DRAWN BY : TRM DATE : 07/2019
CHECKED BY : JMR DATE : 09/2019
DESIGN ENGINEER OF RECORD: JMR DATE : 10/2019

DOCUMENT NOT CONSIDERED FINAL UNLESS ALL SIGNATURES COMPLETED