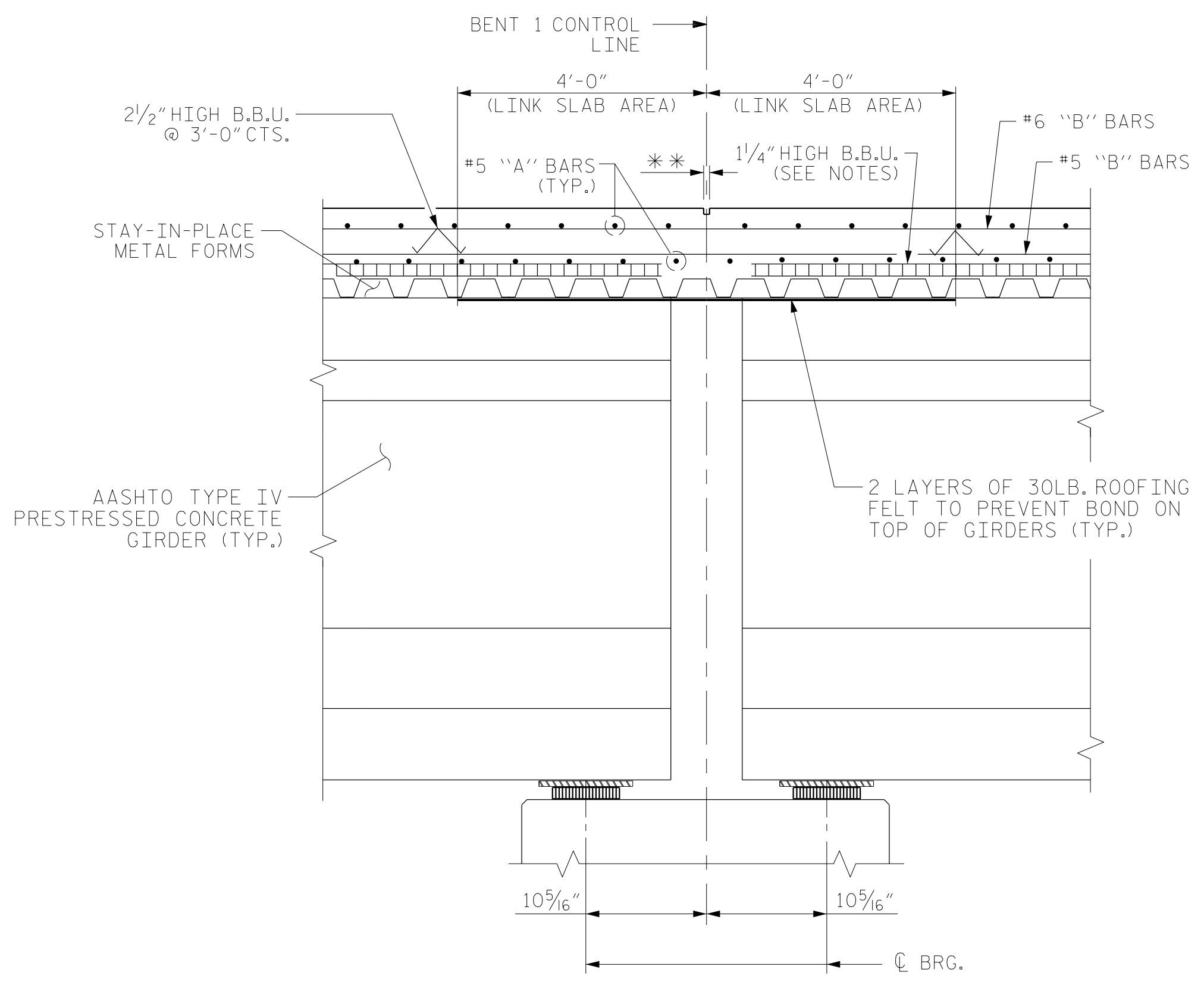


SECTION AT END BENT DIAPHRAGM

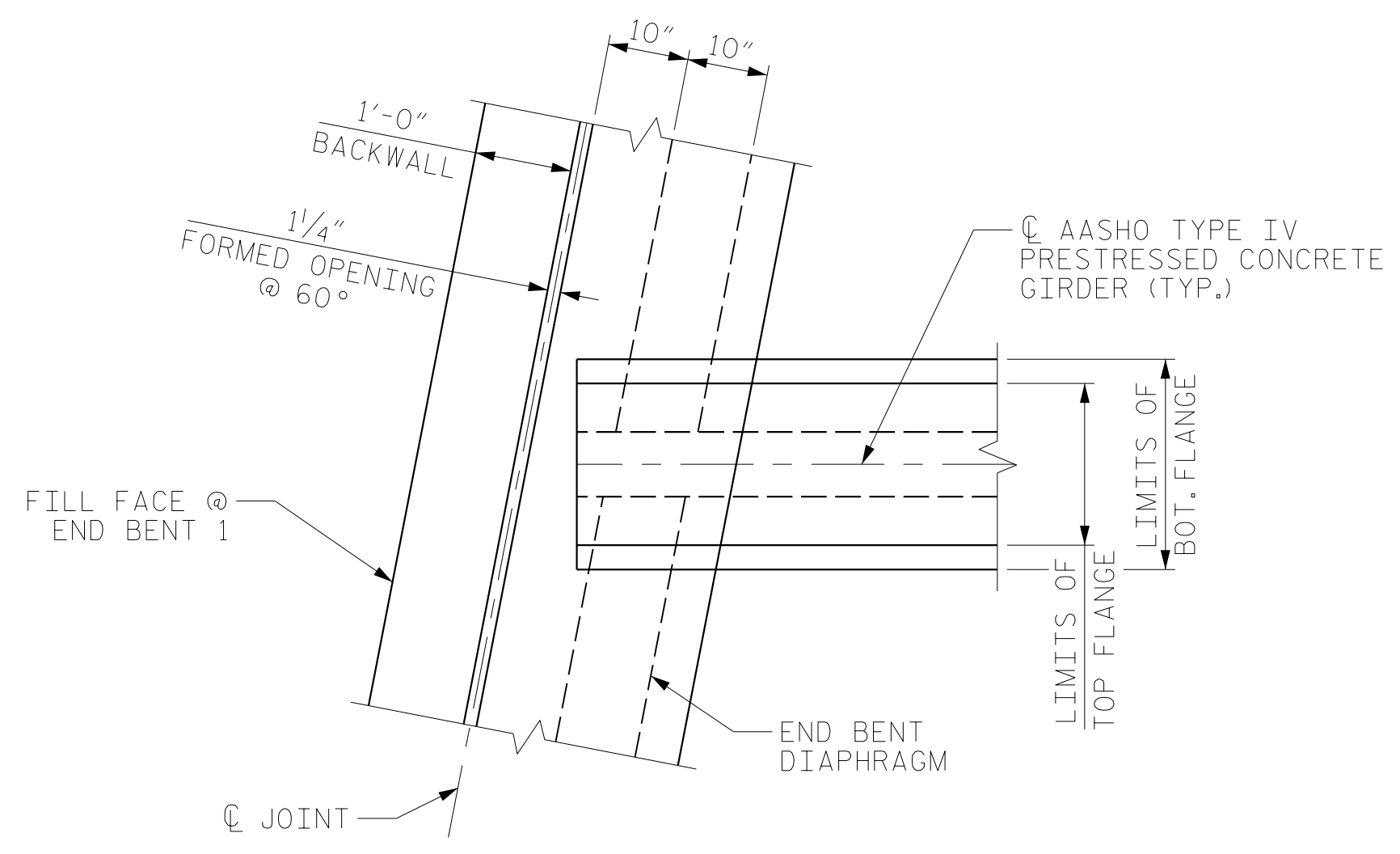
* G1 BAR MAY BE SHIFTED SLIGHTLY, AS NECESSARY, TO CLEAR REINFORCING STEEL & STIRRUPS. END BENT 1 SHOWN, END BENT 2 SIMILAR



SECTION AT BENT 1 LINK SLAB

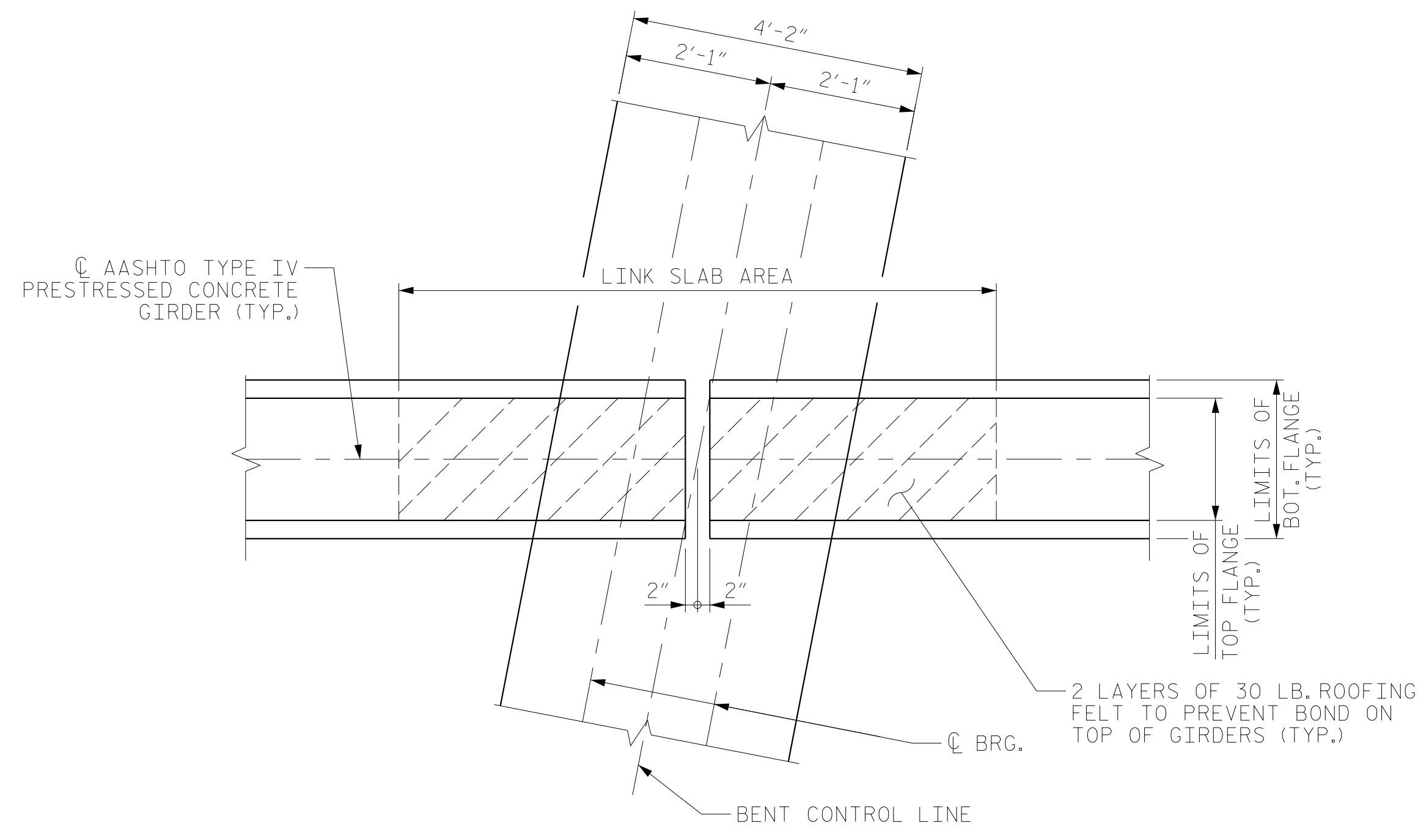
** A 1/2" DEEP CONTRACTION JOINT AT BENT CONTROL LINE, SHALL BE SAWN WITHIN 24 HOURS OF POURING THE DECK. THE JOINT SHALL BE FILLED WITH JOINT SEALER MATERIAL. THE JOINT SEALER MATERIAL SHALL CONFORM TO THE REQUIREMENTS OF TYPE B LOW MODULUS SILICONE SEALANT, SEE SECTION 1028 OF THE STANDARD SPECIFICATION.

NOTE
FOR NOTES, SEE SHEET 1 OF 3.



PLAN OF END BENT DIAPHRAGM

END BENT 1 SHOWN, END BENT 2 SIMILAR



PLAN OF LINK SLAB

PROJECT NO. U-2579AB
FORSYTH COUNTY
STATION: 30+67.66 -Y4-

SHEET 3 OF 3



RS&H
RS&H Architects-Engineers-Planners, Inc.
8521 Six Forks Road, Suite 400
919-926-4100 FAX 919-846-9080
www.rsandh.com
North Carolina License No. 50737-F-0403-C-08

STATE OF NORTH CAROLINA
DEPARTMENT OF TRANSPORTATION
RALEIGH
SUPERSTRUCTURE
TYPICAL SECTION
DETAILS

DRAWN BY :	TWL	DATE :	.06/2018
CHECKED BY :	JMR	DATE :	.09/2019
DESIGN ENGINEER OF RECORD:	JMR	DATE :	.10/2019

DOCUMENT NOT CONSIDERED
FINAL UNLESS ALL
SIGNATURES COMPLETED

REVISIONS						SHEET NO.
NO.	BY:	DATE:	NO.	BY:	DATE:	S2-7
1			3			TOTAL SHEETS
2			4			37