

NOTES

- FOR BRIDGE APPROACH FILL INCLUDING GEOTEXTILE, 6" Ø DRAINAGE PIPE, AND SELECT MATERIAL BACKFILL, SEE ROADWAY PLANS.
- GEOTEXTILE SHALL BE TYPE I IN ACCORDANCE WITH THE STANDARD SPECIFICATIONS SECTION 1056.
- SELECT MATERIAL BACKFILL (CLASS V OR CLASS VI) SHALL BE IN ACCORDANCE WITH STANDARD SPECIFICATIONS SECTION 1016.
- SELECT MATERIAL BACKFILL IS TO BE CONTINUOUS ALONG FILL FACE OF BACKWALL FROM OUTSIDE EDGE TO OUTSIDE EDGE OF APPROACH SLAB.
- APPROACH SLAB SHALL NOT BE CONSTRUCTED PRIOR TO COMPLETION OF THE BRIDGE DECK.
- FOR THE 6" Ø DRAINAGE PIPE OUTLET(S), SEE ROADWAY STANDARD DRAWINGS.
- AREA BETWEEN THE WINGWALL AND APPROACH SLAB SHALL BE GRADED TO DRAIN THE WATER AWAY FROM THE FILL FACE OF THE BRIDGE AND SHALL BE PAVED. SEE ROADWAY PLANS.
- FOR EXPANSION JOINT SEALS, SEE SPECIAL PROVISIONS.
- FOR SIDEWALK REINFORCING, SEE SHEET 2 OF 2.
- PLACE "A" BARS PARALLEL TO THE SKEW OF THE FILL FACE.
- PLACE "B" BARS PARALLEL TO THE SHORT CHORD OF THE APPROACH SLAB.
- SHORT CHORD IS MEASURED FROM BEGIN OF APPROACH SLAB TO END OF APPROACH SLAB.
- Ø DENOTES RADIAL DIMENSION.
- ARC OFFSETS ARE NEGLIGIBLE, AND THEREFORE NOT SHOWN.
- THE QUANTITY OF #4 J1 BARS ON THE BILL OF MATERIAL IS BASED ON 1'-0" CENTERS. J1 BARS SHALL BE PLACED AT EACH VERTICAL STUD ANCHOR BOLT. IN THE EVENT THAT THE NUMBER OF VERTICAL STUD ANCHORS EXCEEDS THE NUMBER OF J1 BARS SPECIFIED, ADDITIONAL J1 BARS WILL NOT BE REQUIRED.

SPLICE LENGTHS		
BAR SIZE	EPOXY COATED	UNCOATED
#4	1'-11"	1'-7"
#5	2'-5"	2'-0"
#6	3'-7"	2'-5"

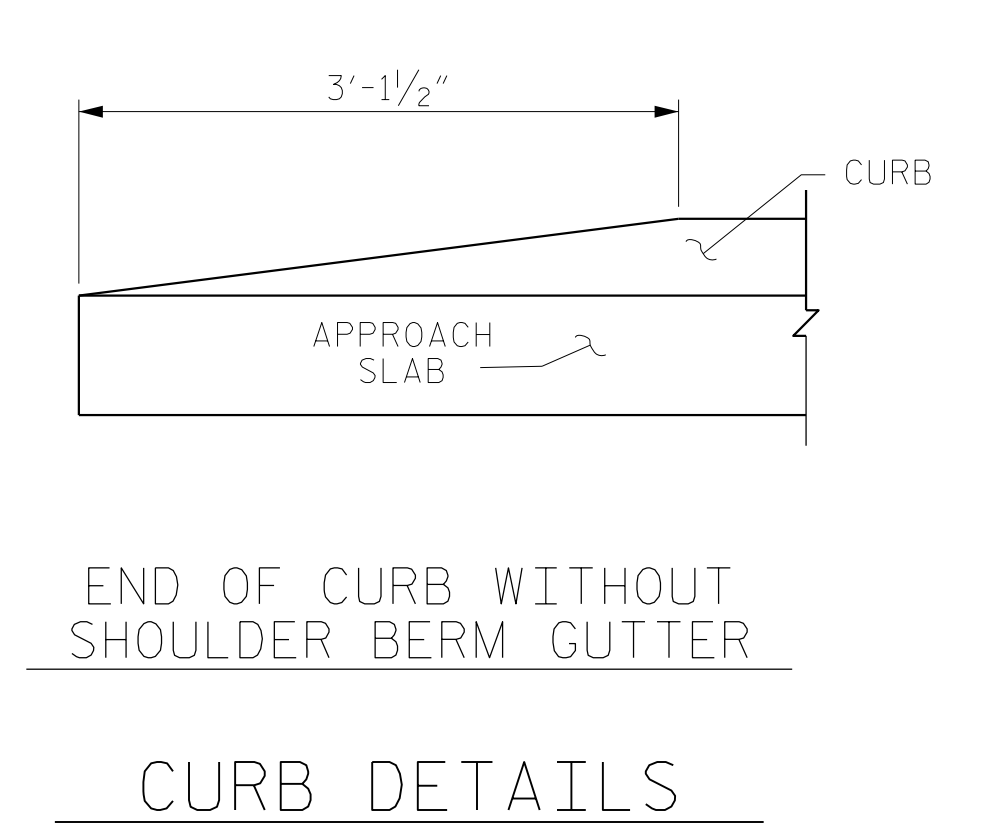
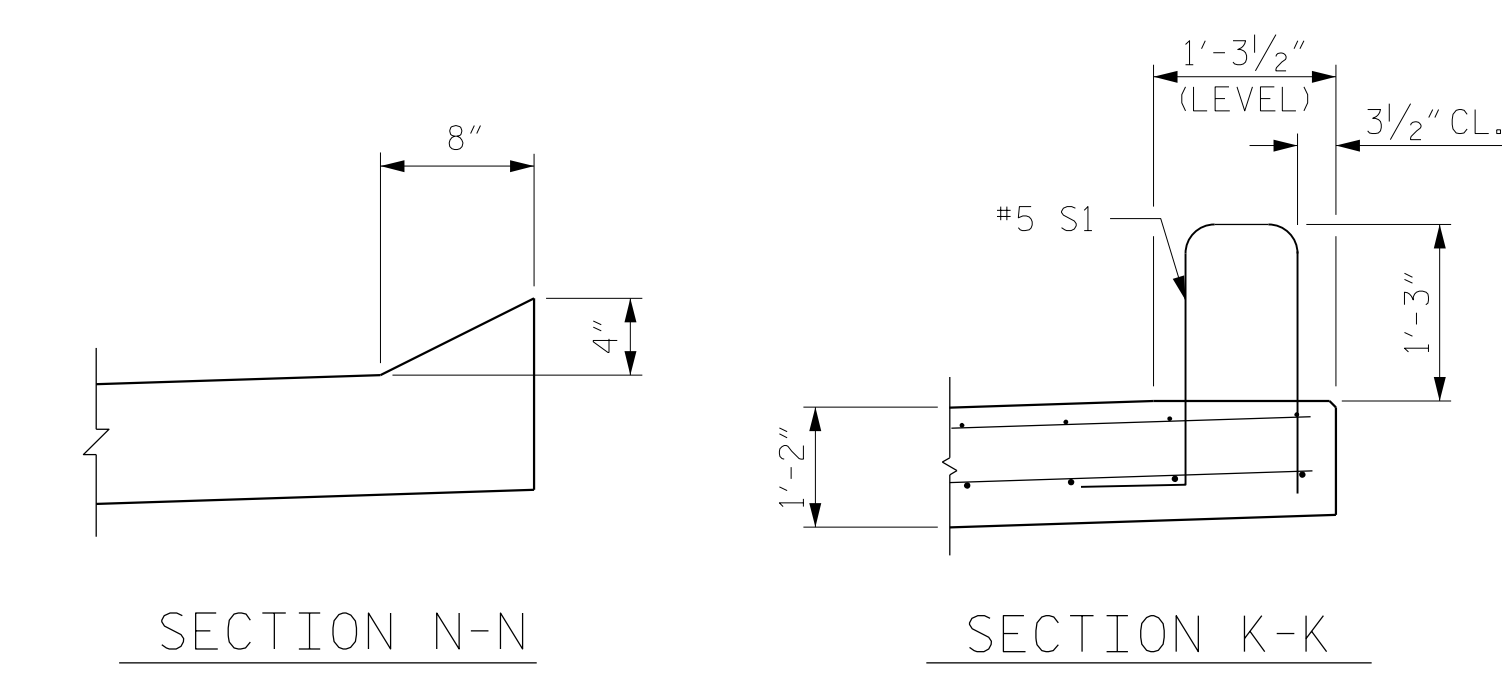
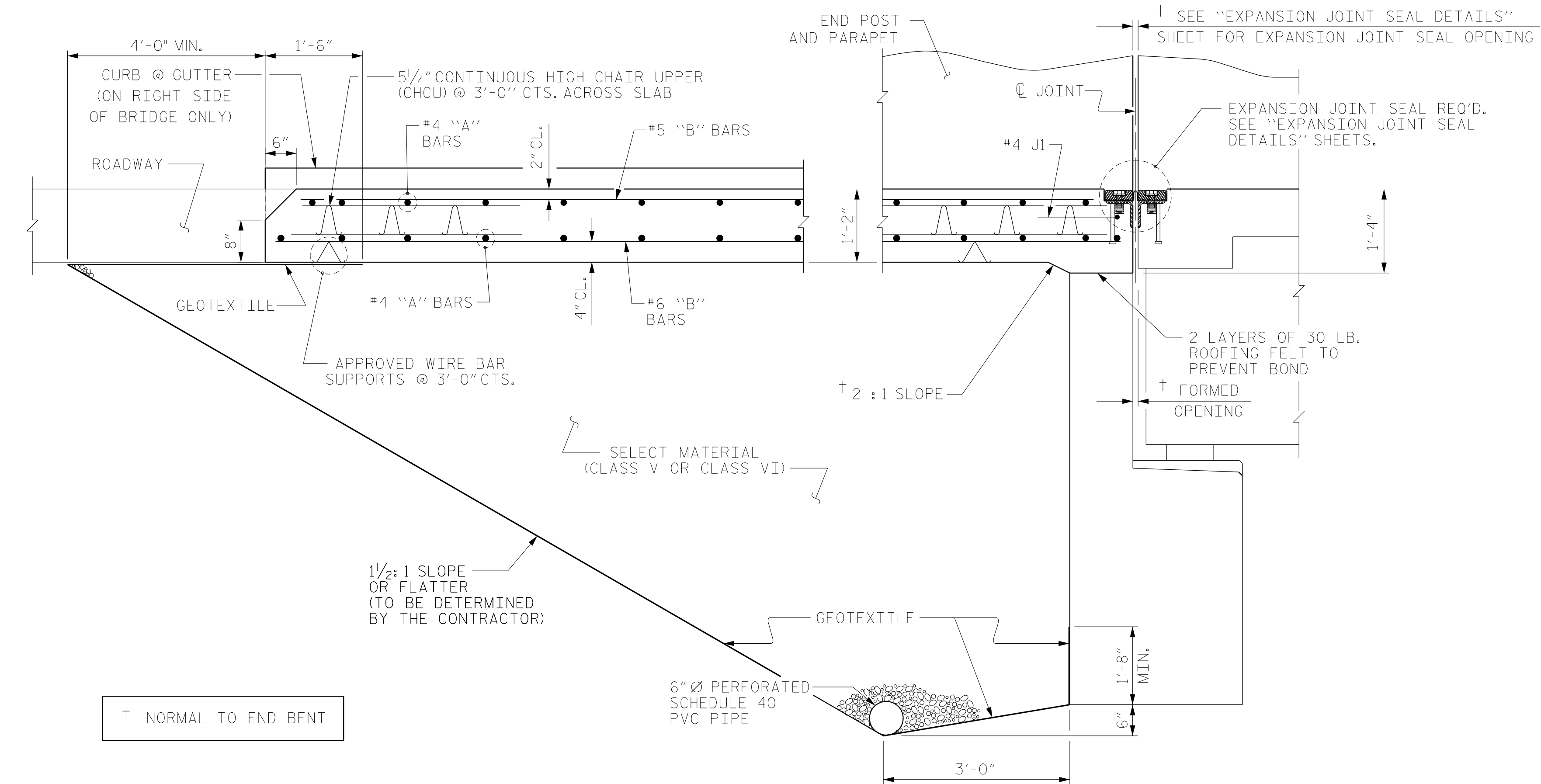
BILL OF MATERIAL

APPROACH SLAB AT BENT 1					
BAR	NO.	SIZE	TYPE	LENGTH	WEIGHT
*A1	30	#4	STR	29'-8"	595
A2	32	#4	STR	29'-6"	631
*B1	72	#5	STR	13'-6"	1014
B2	72	#6	STR	14'-6"	1568
*B3	2	#5	STR	4'-6"	9
*B4	1	#5	STR	4'-0"	4
*B5	1	#5	STR	3'-6"	4
B6	2	#6	STR	4'-6"	14
B7	1	#6	STR	4'-0"	6
B8	1	#6	STR	3'-6"	5
*J1	56	#4	1	1'-5"	53
REINFORCING STEEL **					2,224 LBS.
*EPOXY COATED REINFORCING STEEL **					1,679 LBS.

APPROACH SLAB AT BENT 2					
BAR	NO.	SIZE	TYPE	LENGTH	WEIGHT
*A1	30	#4	STR	27'-5"	549
A2	32	#4	STR	27'-3"	582
*B1	71	#5	STR	13'-6"	1000
B2	71	#6	STR	14'-6"	1546
*B3	1	#5	STR	4'-4"	5
*B4	1	#5	STR	3'-10"	4
*B5	1	#5	STR	3'-4"	3
B6	1	#6	STR	4'-4"	7
B7	1	#6	STR	3'-10"	6
B8	1	#6	STR	3'-4"	5
*B9	1	#5	STR	14'-2"	15
*B10	1	#5	STR	3'-7"	4
B11	1	#6	STR	14'-2"	21
B12	1	#6	STR	3'-7"	5
*J1	52	#4	1	1'-5"	49
REINFORCING STEEL **					2,172 LBS.
*EPOXY COATED REINFORCING STEEL **					1,629 LBS.

CLASS AA CONCRETE **		24.1 C.Y.
APPROACH SLAB AT BENT 2		
CLASS AA CONCRETE **		24.0 C.Y.

ALL BAR DIMENSIONS ARE OUT TO OUT
** QUANTITIES FOR SIDEWALK AND END POST ARE NOT INCLUDED. SEE SHEET 2 OF 2.



PROJECT NO. U-2579AB
FORSYTH COUNTY
STATION: 22+26.35 -Y1B-

SHEET 1 OF 2

STATE OF NORTH CAROLINA
DEPARTMENT OF TRANSPORTATION
RALEIGH

STANDARD
BRIDGE APPROACH SLAB
FOR FLEXIBLE PAVEMENT

RS&H
RS&H Architects-Engineers-Planners, Inc.
8521 Six Forks Road, Suite 400
919-926-4100 FAX 919-846-9080
www.rsandh.com
North Carolina License No. 50737-0403-C&E

ASSEMBLED BY :	NSC	DATE :	08/2019
CHECKED BY :	JMR	DATE :	11/2019
DRAWN BY :	EEM 3/95	REV. 12/21/11	MAA/GM
CHECKED BY :	VAP 3/95	REV. 6/13	MAA/GM
		REV. 12/17	MAA/THC

DOCUMENT NOT CONSIDERED FINAL UNLESS ALL SIGNATURES COMPLETED

REVISIONS						SHEET NO.
NO.	BY:	DATE:	NO.	BY:	DATE:	S1-46
1			3			TOTAL SHEETS
2			4			47