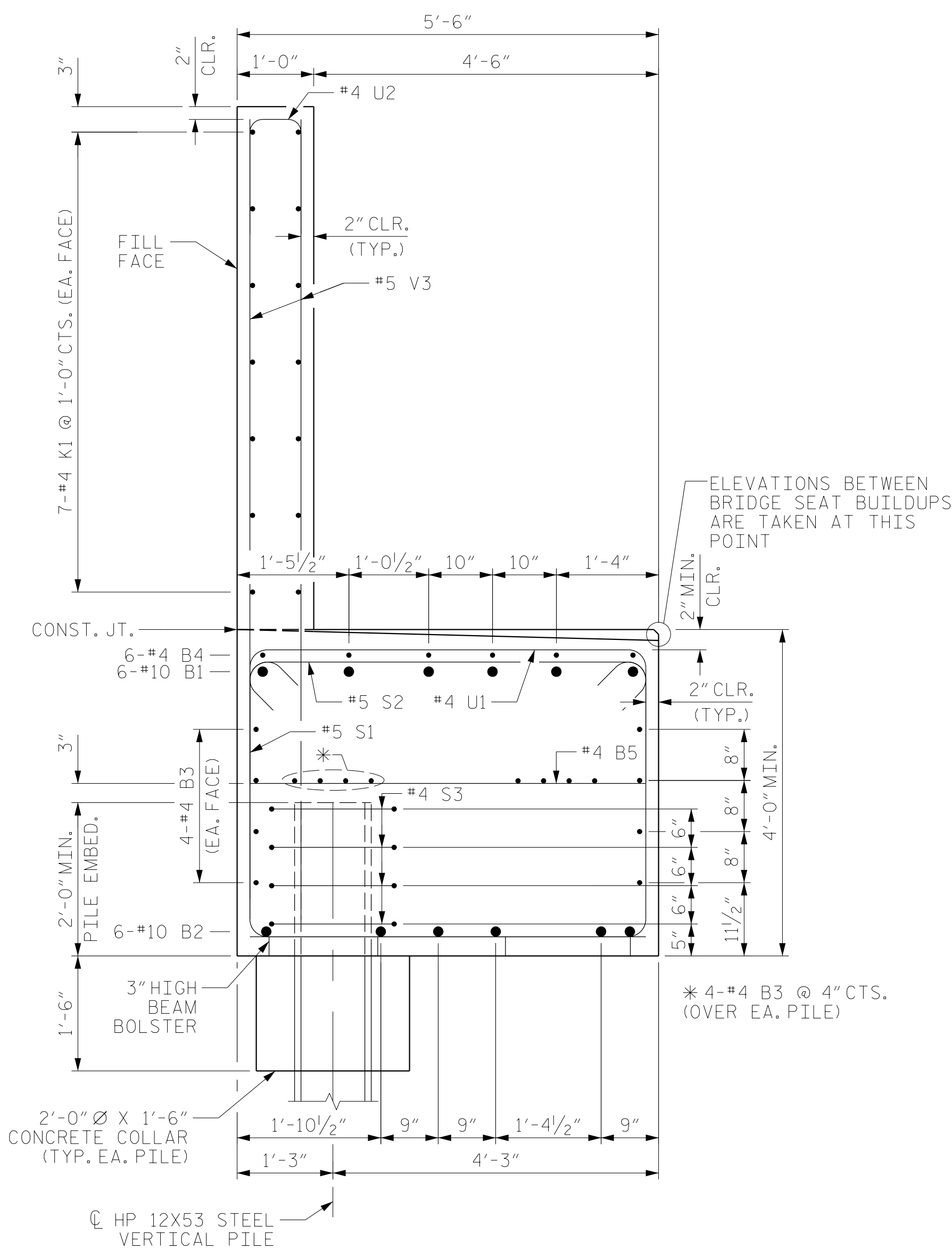


BAGGED STONE AND PIPE SHALL BE PLACED IMMEDIATELY AFTER COMPLETION OF END BENT EXCAVATION. PIPE MAY BE EITHER CONCRETE, CORRUGATED STEEL, CORRUGATED ALUMINUM ALLOY, OR CORRUGATED PLASTIC. PERFORATED PIPE WILL NOT BE ALLOWED.

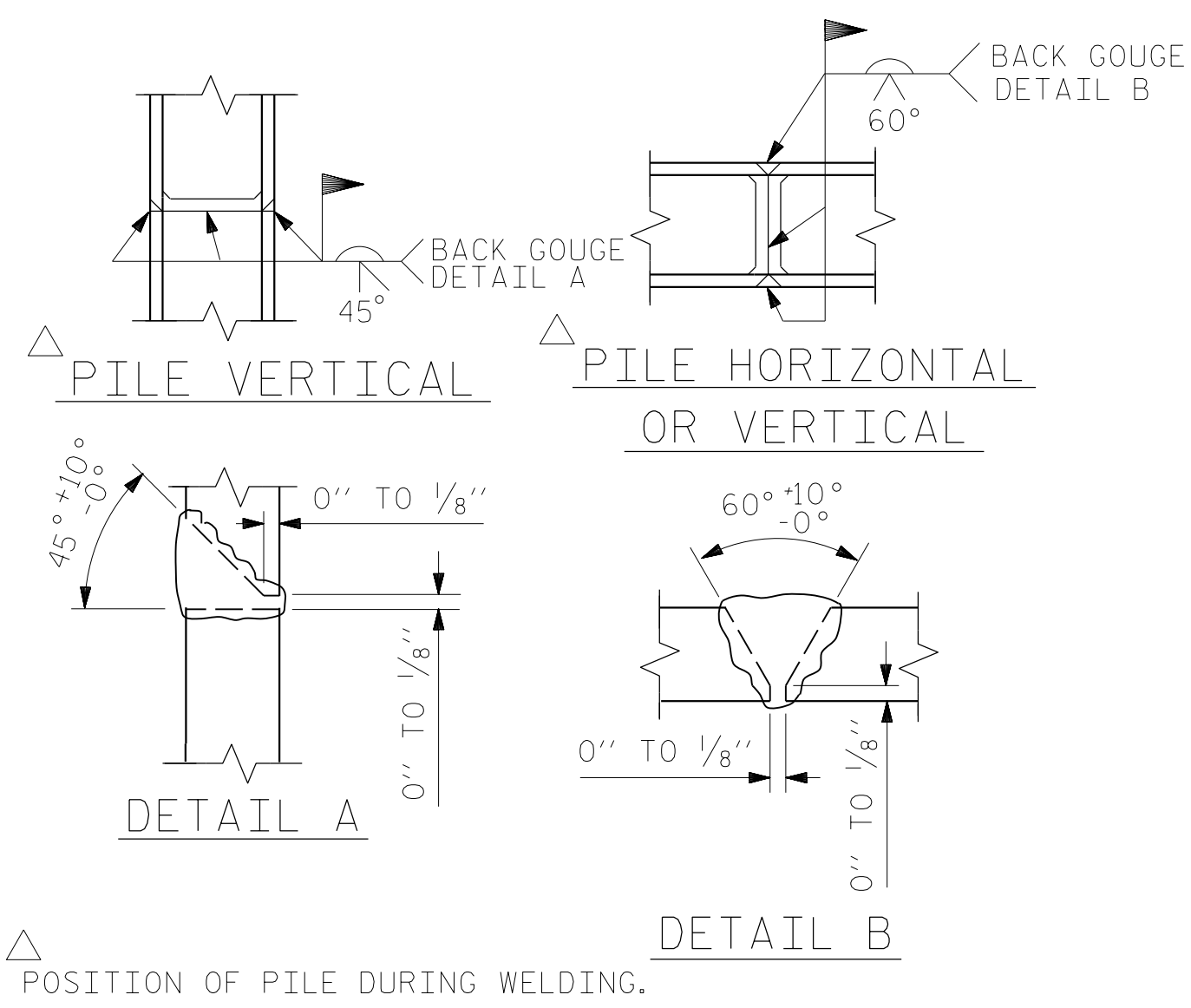
BAGGED STONE SHALL REMAIN IN PLACE UNTIL THE ENGINEER DIRECTS THAT IT BE REMOVED. THE CONTRACTOR SHALL REMOVE AND DISPOSE OF SILT ACCUMULATIONS AT BAGGED STONE WHEN SO DIRECTED BY THE ENGINEER. BAGS SHALL BE REMOVED AND REPLACED WHENEVER THE ENGINEER DETERMINES THAT THEY HAVE DETERIORATED AND LOST THEIR EFFECTIVENESS.

NO SEPARATE PAYMENT WILL BE MADE FOR THIS WORK AND THE ENTIRE COST OF THIS WORK SHALL BE INCLUDED IN THE UNIT CONTRACT PRICE BID FOR THE SEVERAL PAY ITEMS.

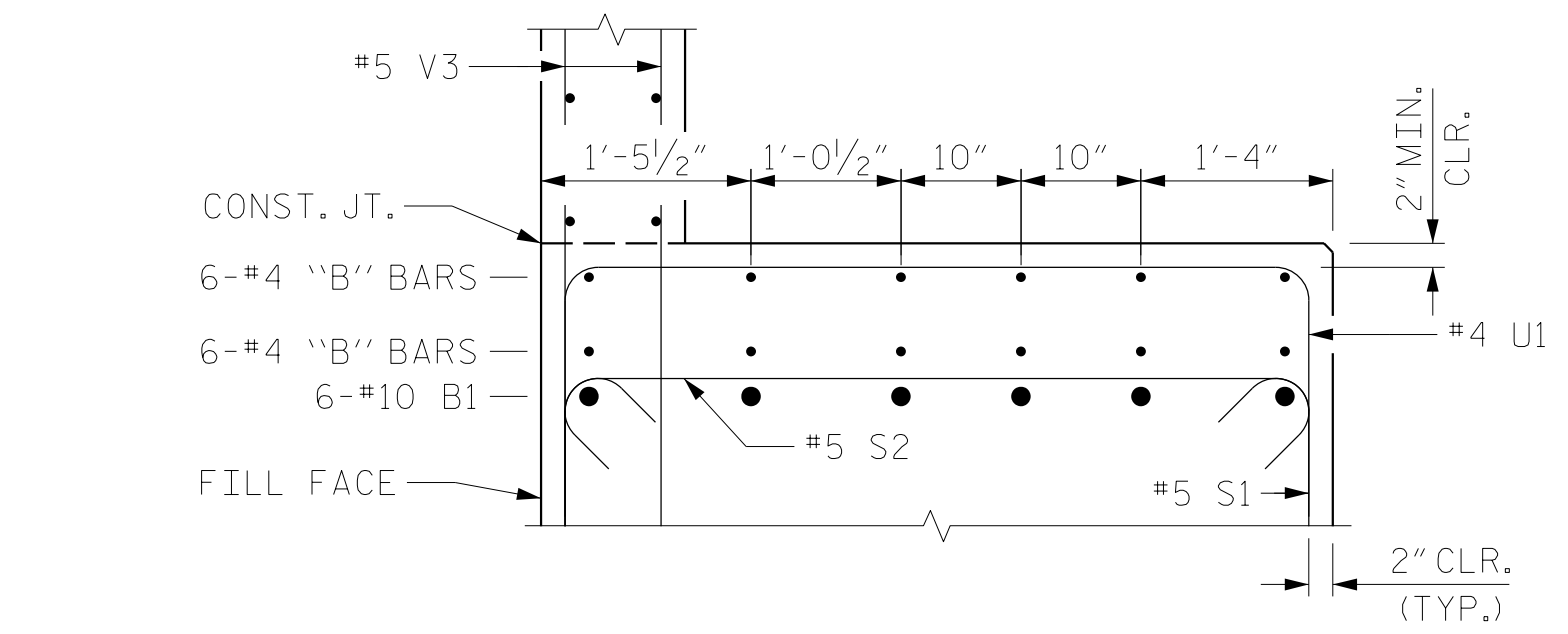
TEMPORARY DRAINAGE AT END BENT



SECTION A-A

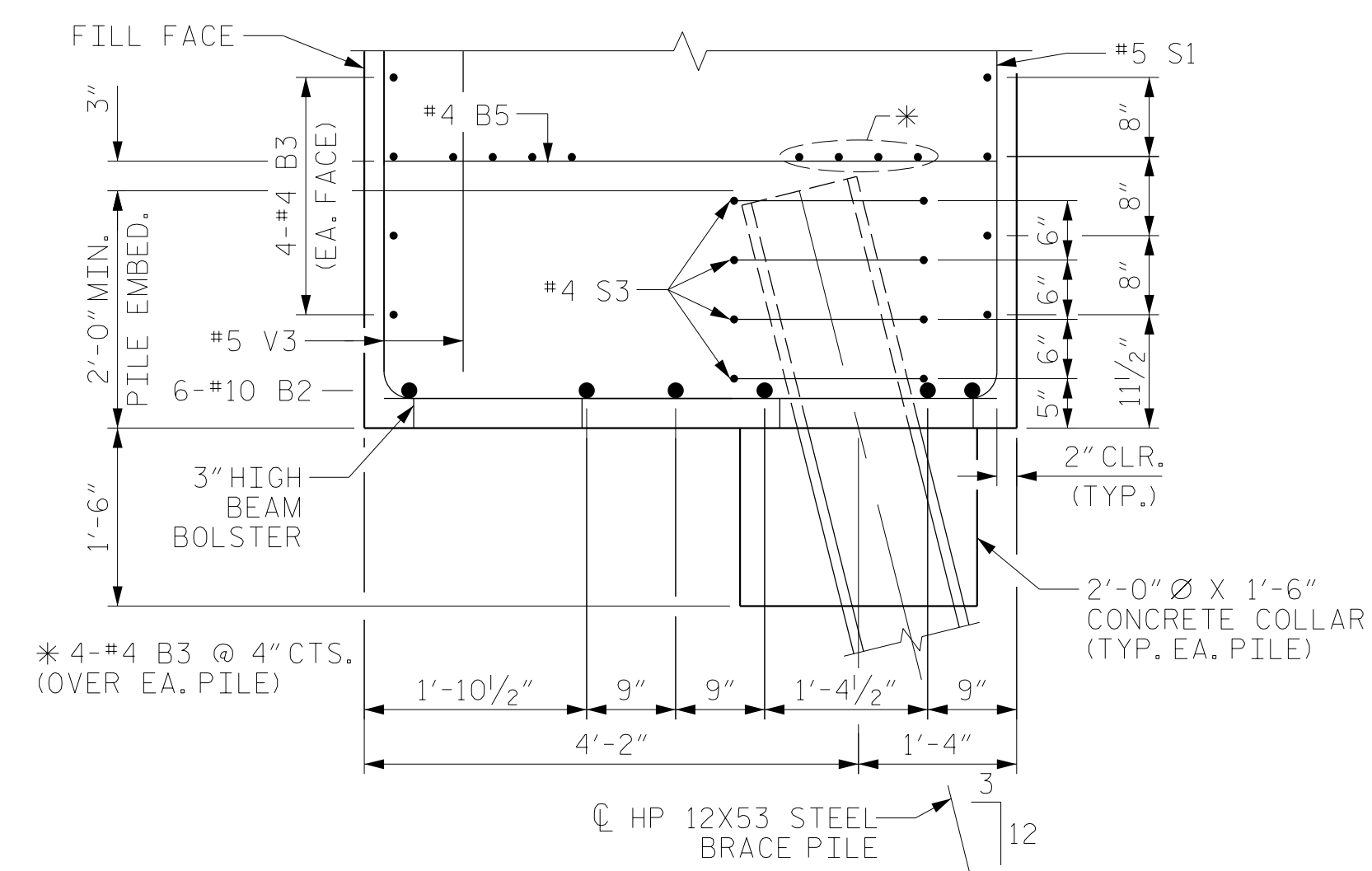


PILE SPLICE DETAILS

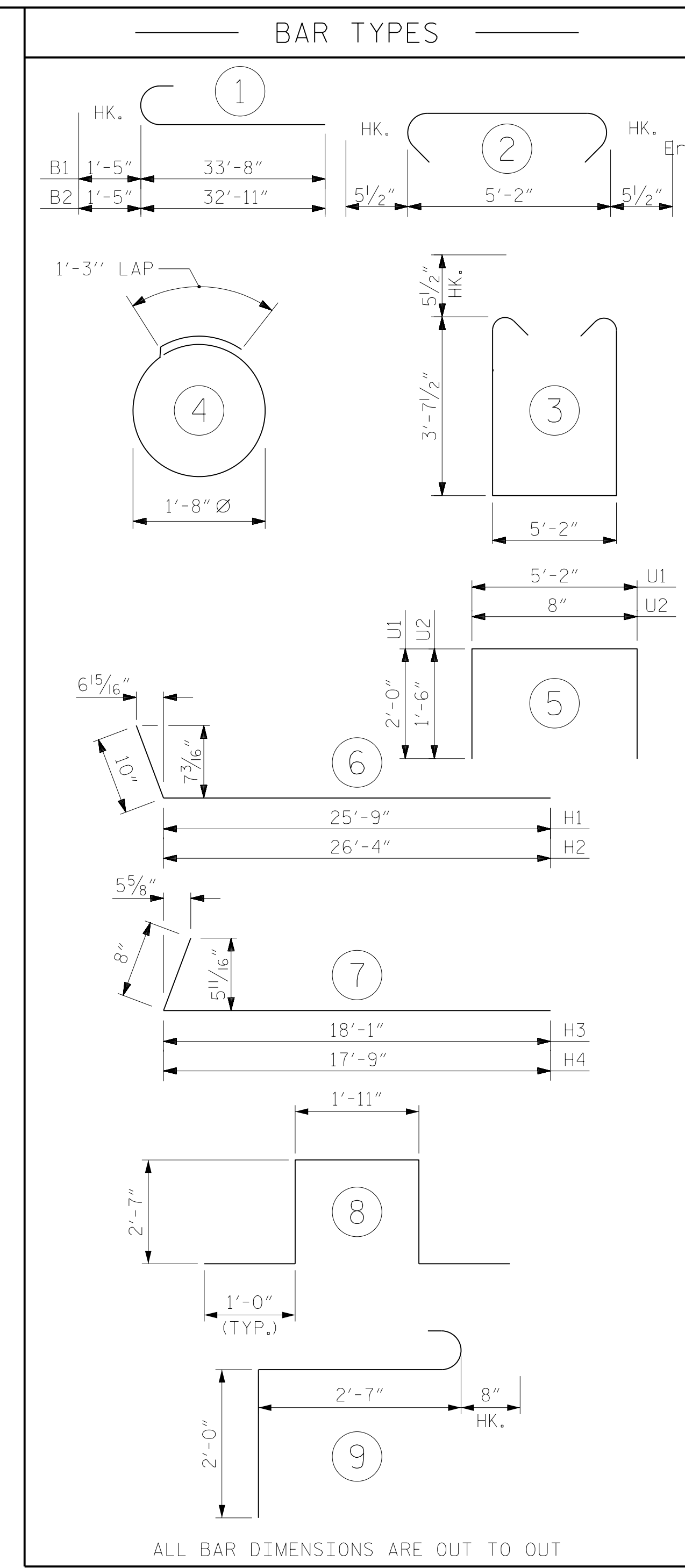


PARTIAL SECTION AT BRIDGE SEAT

BOTTOM ROW OF #4 "B" BARS EXTEND UNDER BRIDGE SEAT FOR SPLICE PURPOSES ONLY. DETAIL NOT APPLICABLE UNDER GIRDER 1.



SECTION B-B



BILL OF MATERIAL					
END BENT NO. 2					
BAR	NO.	SIZE	TYPE	LENGTH	WEIGHT
Bent 2	2				
B1	12	#10	1	35'-1"	1812
B2	12	#10	1	34'-4"	1773
B3	32	#4	STR	32'-0"	684
B4	12	#4	STR	17'-5"	140
B5	15	#4	STR	5'-2"	52
B6	11	#4	STR	7'-6"	55
H1	27	#5	6	26'-7"	749
H2	27	#5	6	27'-2"	765
H3	19	#4	7	18'-9"	238
H4	19	#4	7	18'-5"	234
K1	28	#4	STR	32'-0"	599
K2	6	#4	STR	3'-6"	14
K3	6	#4	STR	3'-5"	14
S1	64	#5	3	13'-4"	890
S2	64	#5	2	6'-1"	406
S3	68	#4	4	6'-6"	295
S4	6	#6	8	9'-1"	82
S5	6	#6	9	5'-3"	47
U1	25	#4	5	9'-2"	153
U2	63	#4	5	3'-8"	154
V1	61	#5	STR	12'-11"	822
V2	45	#5	STR	12'-8"	595
V3	126	#5	STR	10'-4"	1358

REINFORCING STEEL 11,931 LBS.
CLASS A CONCRETE

POUR #1
CAP, COLLARS AND LOWER PART OF WINGS 70.7 C.Y.

POUR #2
UPPER PART OF WINGS AND BACKWALL 30.4 C.Y.

TOTAL CLASS A CONCRETE 101.1 C.Y.

HP 12 X 53 STEEL PILES NO. 19 1188.0 LIN. FT.

PILE DRIVING EQUIPMENT SETUP NO. 19

PROJECT NO. U-2579AB
FORSYTH COUNTY
STATION: 22+26.35 -Y1B-

SHEET 5 OF 5



REVISIONS						SHEET NO.
NO.	BY:	DATE:	NO.	BY:	DATE:	S1-43
1			3			TOTAL SHEETS 47
2			4			

DRAWN BY : MRA DATE : 11/2019
CHECKED BY : MAL DATE : 11/2019
DESIGN ENGINEER OF RECORD: MAL DATE : 11/2019

DOCUMENT NOT CONSIDERED FINAL UNLESS ALL SIGNATURES COMPLETED