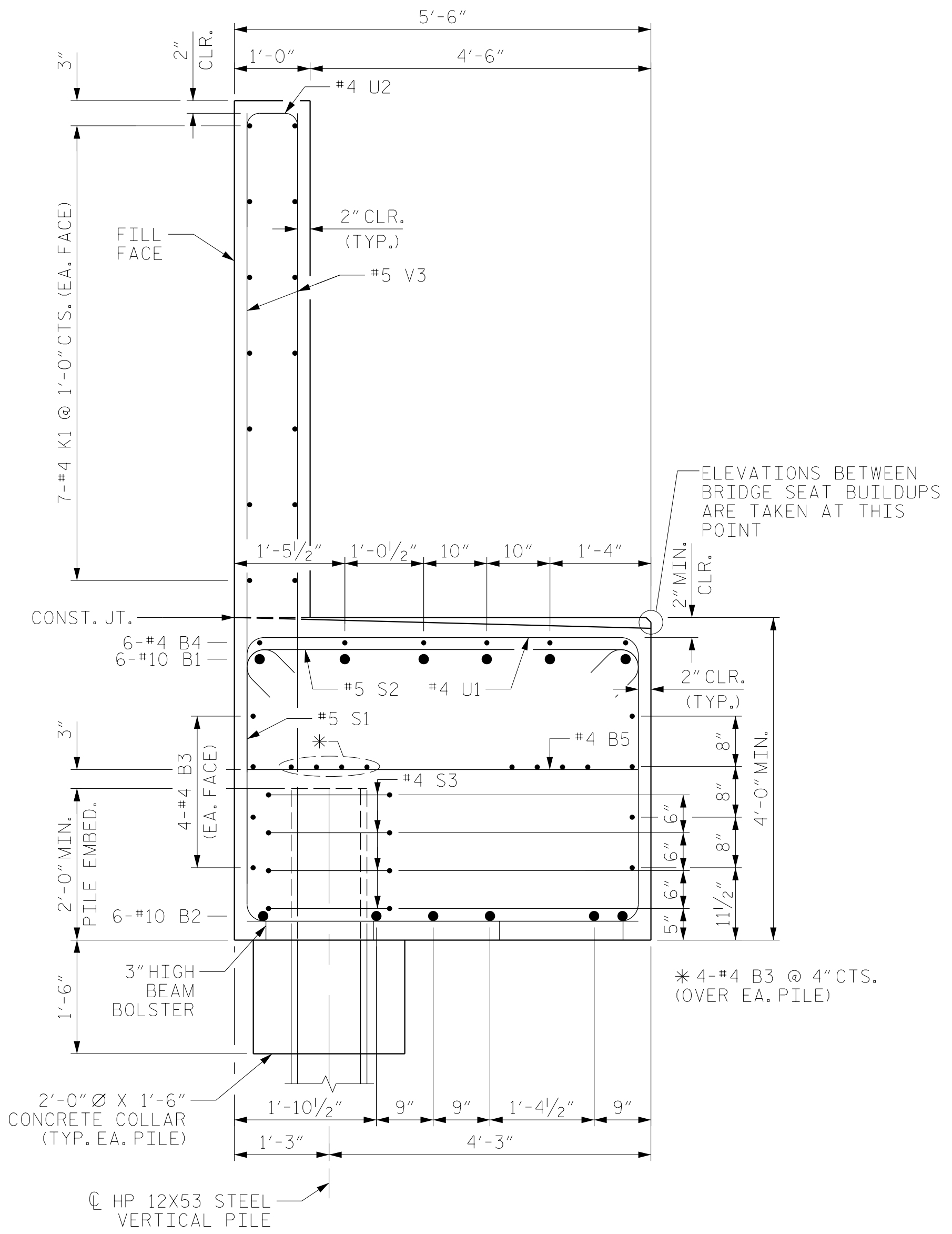


BAGGED STONE AND PIPE SHALL BE PLACED IMMEDIATELY AFTER COMPLETION OF END BENT EXCAVATION. PIPE MAY BE EITHER CONCRETE, CORRUGATED STEEL, CORRUGATED ALUMINUM ALLOY, OR CORRUGATED PLASTIC. PERFORATED PIPE WILL NOT BE ALLOWED.

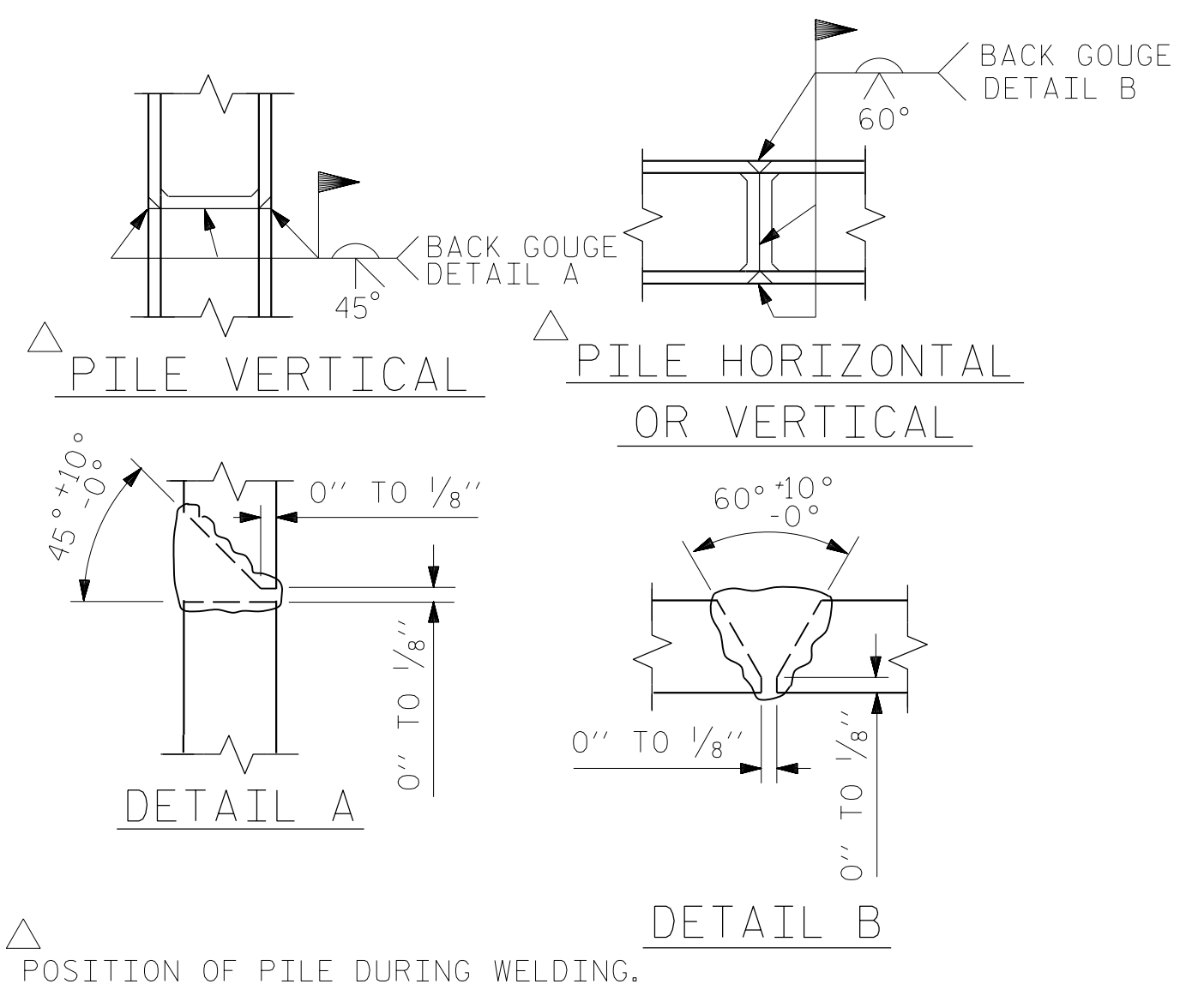
BAGGED STONE SHALL REMAIN IN PLACE UNTIL THE ENGINEER DIRECTS THAT IT BE REMOVED. THE CONTRACTOR SHALL REMOVE AND DISPOSE OF SILT ACCUMULATIONS AT BAGGED STONE WHEN SO DIRECTED BY THE ENGINEER. BAGS SHALL BE REMOVED AND REPLACED WHENEVER THE ENGINEER DETERMINES THAT THEY HAVE DETERIORATED AND LOST THEIR EFFECTIVENESS.

NO SEPARATE PAYMENT WILL BE MADE FOR THIS WORK AND THE ENTIRE COST OF THIS WORK SHALL BE INCLUDED IN THE UNIT CONTRACT PRICE BID FOR THE SEVERAL PAY ITEMS.

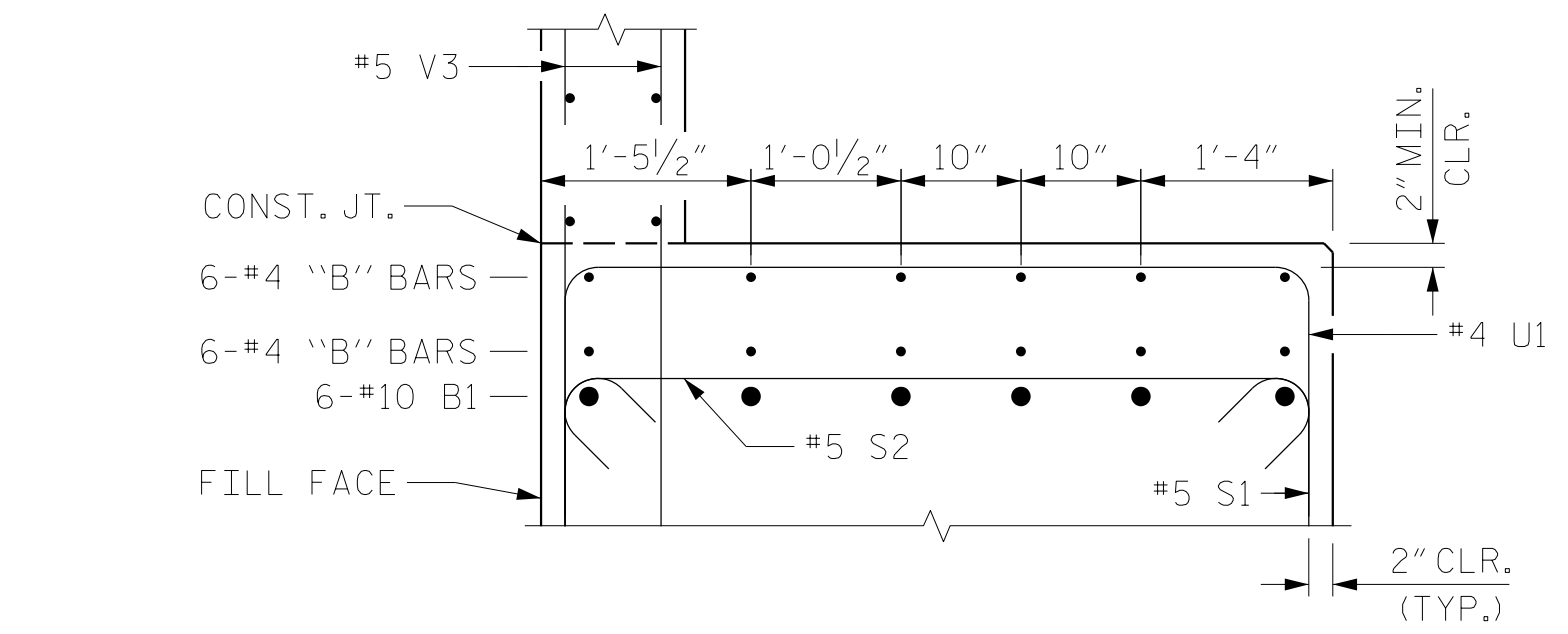
### TEMPORARY DRAINAGE AT END BENT



SECTION A-A

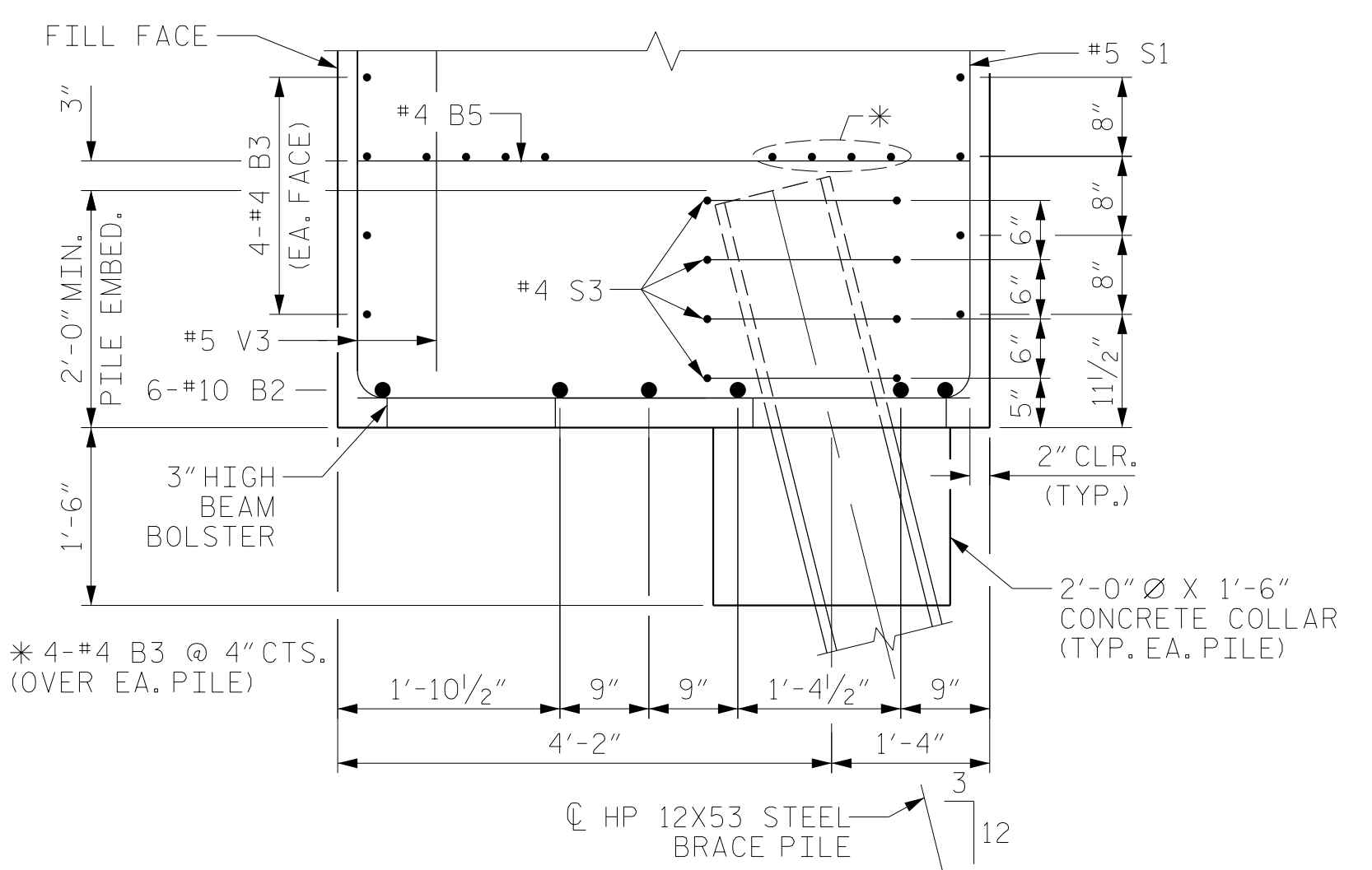


### PILE SPLICE DETAILS

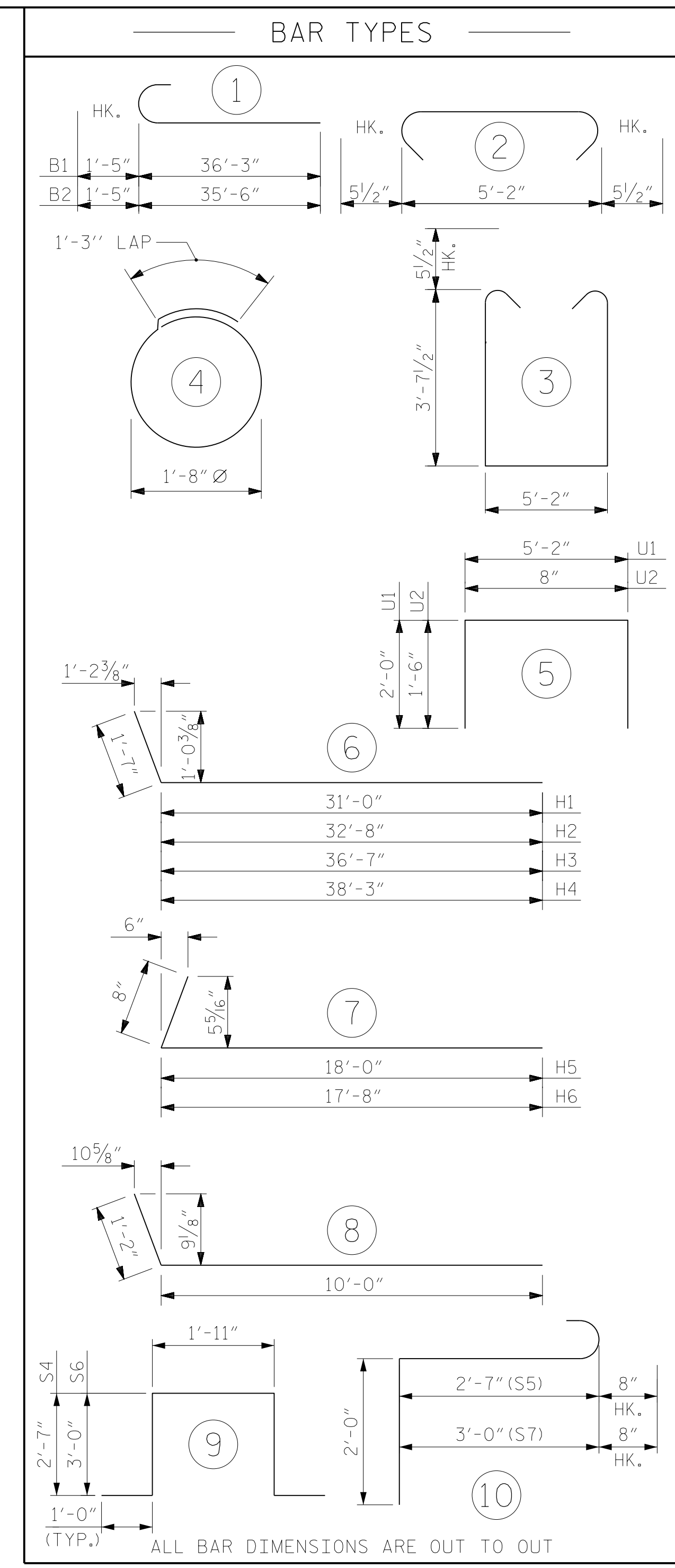


### PARTIAL SECTION AT BRIDGE SEAT

BOTTOM ROW OF #4 "B" BARS EXTEND UNDER BRIDGE SEAT FOR SPLICE PURPOSES ONLY. DETAIL NOT APPLICABLE UNDER GIRDER 1.



SECTION B-B



BILL OF MATERIAL					
END BENT NO. 1					
BAR	NO.	SIZE	TYPE	LENGTH	WEIGHT
B1	12	#10	1	37'-8"	1945
B2	12	#10	1	36'-11"	1906
B3	32	#4	STR	34'-5"	736
B4	12	#4	STR	18'-7"	149
B5	16	#4	STR	5'-2"	55
B6	11	#4	STR	7'-8"	56
H1	18	#9	6	32'-7"	1994
H2	18	#9	6	34'-3"	2096
H3	8	#9	6	38'-2"	1038
H4	8	#9	6	39'-10"	1083
H5	19	#4	7	18'-8"	237
H6	19	#4	7	18'-4"	233
K1	28	#4	STR	34'-4"	642
K2	24	#7	STR	3'-9"	184
K3	6	#4	STR	3'-7"	14
K4	14	#7	8	11'-2"	320
S1	64	#5	3	13'-4"	890
S2	64	#5	2	6'-1"	406
S3	68	#4	4	6'-6"	295
S4	3	#6	9	9'-1"	41
S5	3	#6	10	5'-3"	24
S6	6	#6	9	9'-11"	89
S7	6	#6	10	5'-8"	51
U1	27	#4	5	9'-2"	165
U2	69	#4	5	3'-8"	169
V1	124	#5	STR	12'-9"	1649
V2	45	#5	STR	13'-1"	614
V3	136	#5	STR	10'-3"	1454
V4	11	#7	STR	12'-9"	287

REINFORCING STEEL 18,822 LBS.  
CLASS A CONCRETE

POUR #1  
CAP, COLLARS AND LOWER PART OF WINGS 79.4 C.Y.

POUR #2  
UPPER PART OF WINGS AND BACKWALL 43.0 C.Y.

TOTAL CLASS A CONCRETE 122.4 C.Y.

HP 12 X 53 STEEL PILES NO. 20 400.0 LIN. FT.  
PILE DRIVING EQUIPMENT SETUP NO. 20

PROJECT NO. U-2579AB  
FORSYTH COUNTY  
STATION: 22+26.35 -Y1B-

SHEET 5 OF 5



STATE OF NORTH CAROLINA  
DEPARTMENT OF TRANSPORTATION  
RALEIGH  
SUBSTRUCTURE  
END BENT 1  
DETAILS

DRAWN BY : MRA DATE : 11/2019  
CHECKED BY : MAL DATE : 11/2019  
DESIGN ENGINEER OF RECORD: MAL DATE : 11/2019

DOCUMENT NOT CONSIDERED FINAL UNLESS ALL SIGNATURES COMPLETED

REVISIONS						SHEET NO.
NO.	BY:	DATE:	NO.	BY:	DATE:	S1-36
1			3			TOTAL SHEETS 47
2			4			