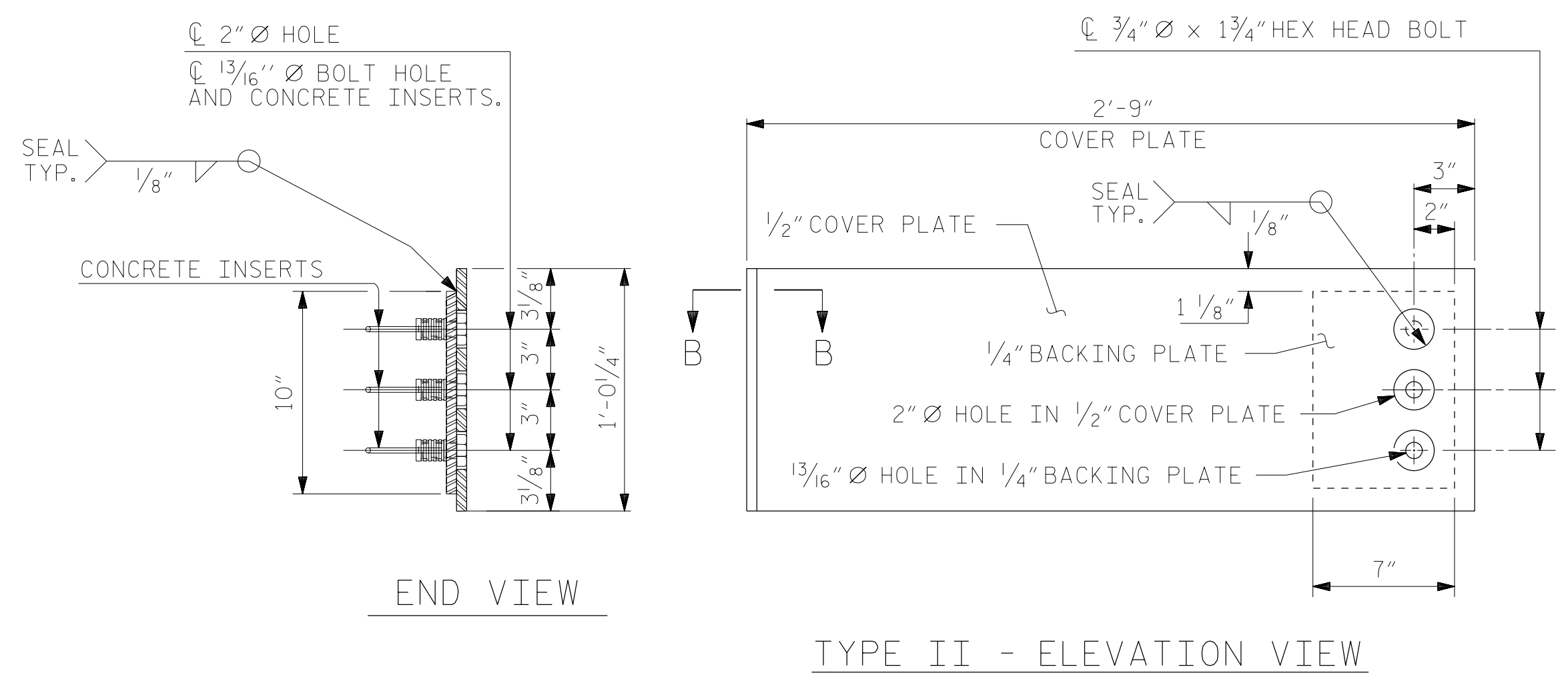
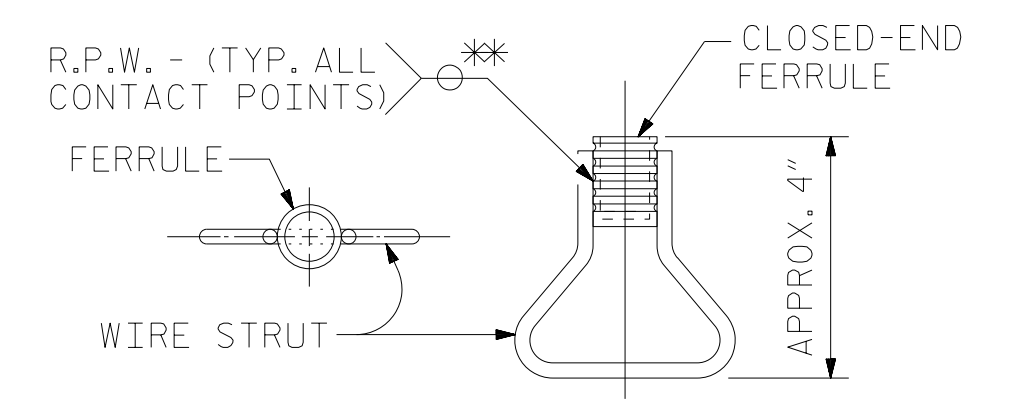


SECTION THRU RAIL NORMAL TO JOINT

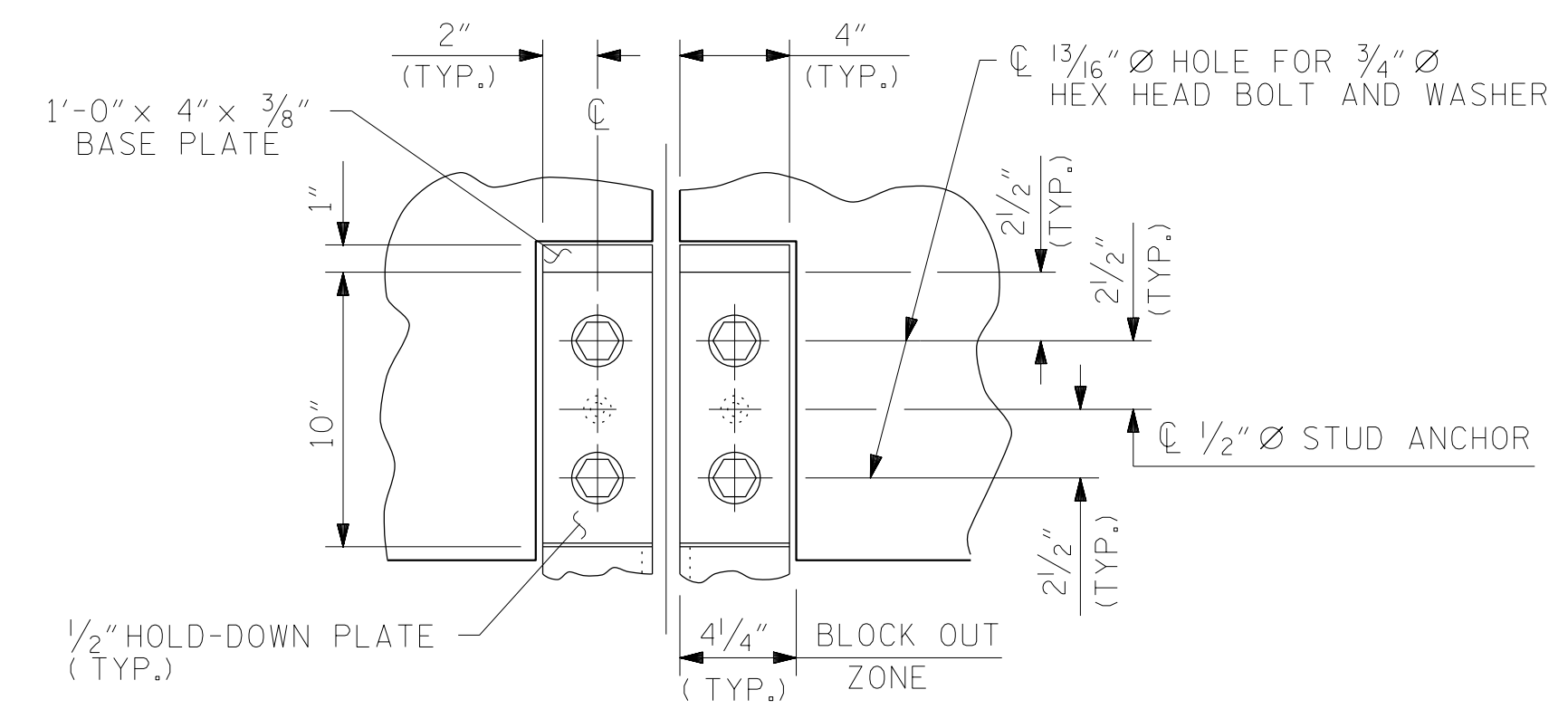


COVER PLATE DETAILS

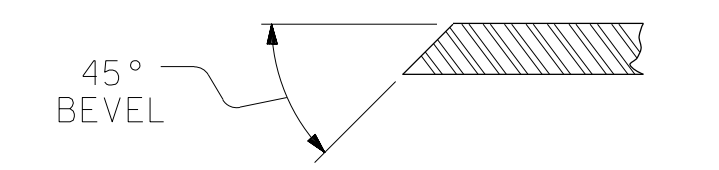


CONCRETE INSERT

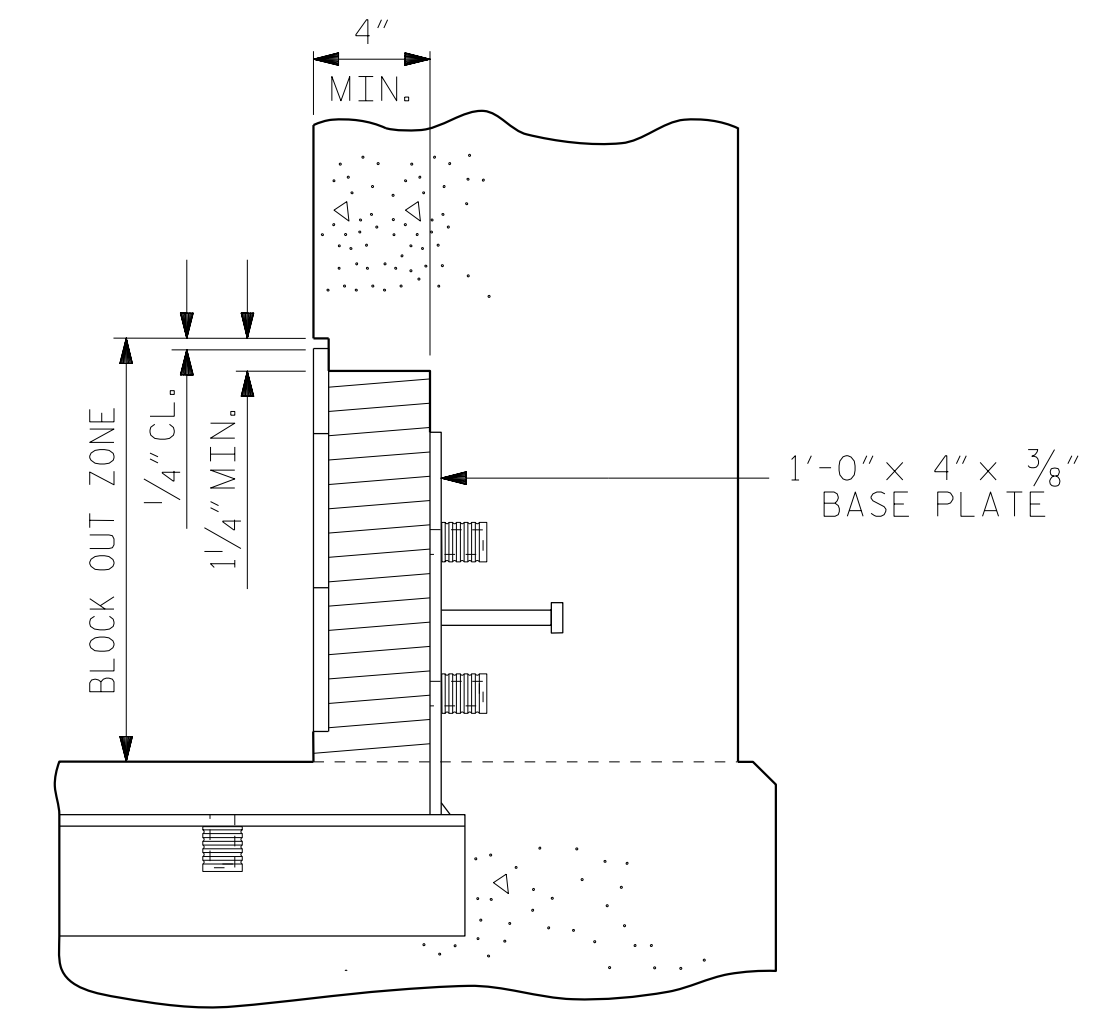
** EACH WELDED ATTACHMENT OF WIRE TO FERRULE SHALL DEVELOP THE TENSILE STRENGTH OF THE WIRE.



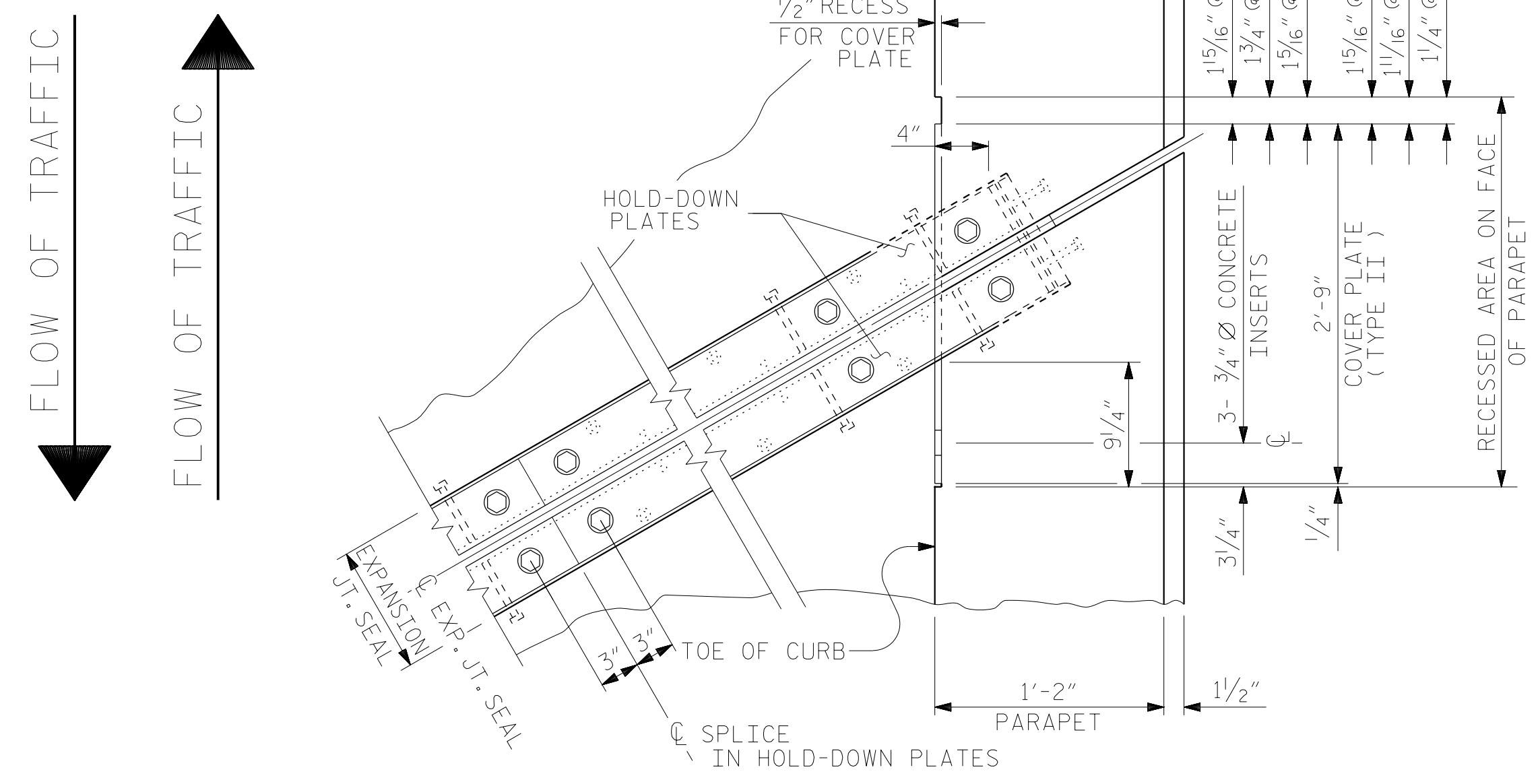
SECTION A - A



SECTION B - B



BLOCK OUT DETAIL
SEE "SECTION A - A" FOR OTHER DETAILS.



PLAN OF EXPANSION JOINT SEAL

PROJECT NO. U-2579AB
 FORSYTH COUNTY
 STATION: 22+26.35 -Y1B-

SHEET 4 OF 4



RS&H Architects-Engineers-Planners, Inc.
 8521 Six Forks Road, Suite 400
 919-926-4100 FAX 919-846-9080
 www.rsandh.com
 North Carolina License No. 50737-54037-C&E

STATE OF NORTH CAROLINA
 DEPARTMENT OF TRANSPORTATION
 RALEIGH
 SUPERSTRUCTURE
 EXPANSION JOINT
 SEAL DETAILS
 FOR PARAPET

REVISIONS						SHEET NO.
NO.	BY:	DATE:	NO.	BY:	DATE:	S1-29
1			3			TOTAL SHEETS
2			4			47

DRAWN BY : NSC DATE : 04/2020
 CHECKED BY : MRA DATE : 10/2020
 DESIGN ENGINEER OF RECORD: MAL DATE : 10/2020

DOCUMENT NOT CONSIDERED
 FINAL UNLESS ALL
 SIGNATURES COMPLETED