

### NOTES

FOR DISC BEARINGS, SEE SPECIAL PROVISIONS.

ALL BEARING PLATES SHALL BE AASHTO M270 GRADE 50W OR GRADE 50.

AT ALL POINTS OF SUPPORT, NUTS FOR ANCHOR BOLTS SHALL BE FINGER-TIGHTENED PLUS AN ADDITIONAL 1/4 TURN. THE THREAD OF THE NUT AND BOLT SHALL THEN BE BURRED WITH A SHARP POINTED TOOL.

WHEN WELDING THE SOLE PLATE TO THE GIRDER, USE TEMPERATURE INDICATING WAX PENS, OR OTHER SUITABLE MEANS, TO ENSURE THAT THE TEMPERATURE OF THE BEARING DOES NOT EXCEED 250°F. TEMPERATURES ABOVE THIS MAY DAMAGE THE TFE OR URETHANE DISC.

AFTER BEARING ASSEMBLY IS IN PLACE AND ANCHOR BOLTS HAVE BEEN FINALLY POSITIONED, THEY SHALL BE GROUTED IN PLACE AS SHOWN.

THE CLOSURE PLATE, GROUT PIPE, AND STANDARD PIPE FOR THIS ASSEMBLY NEED NOT BE GALVANIZED.

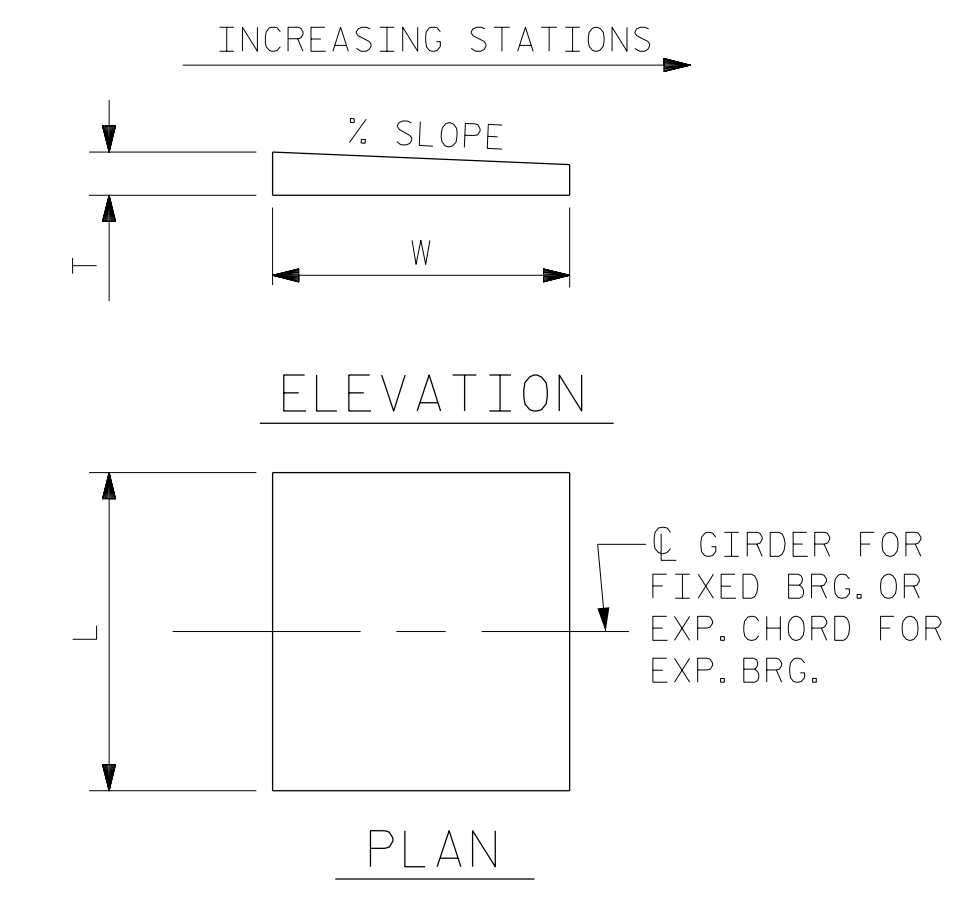
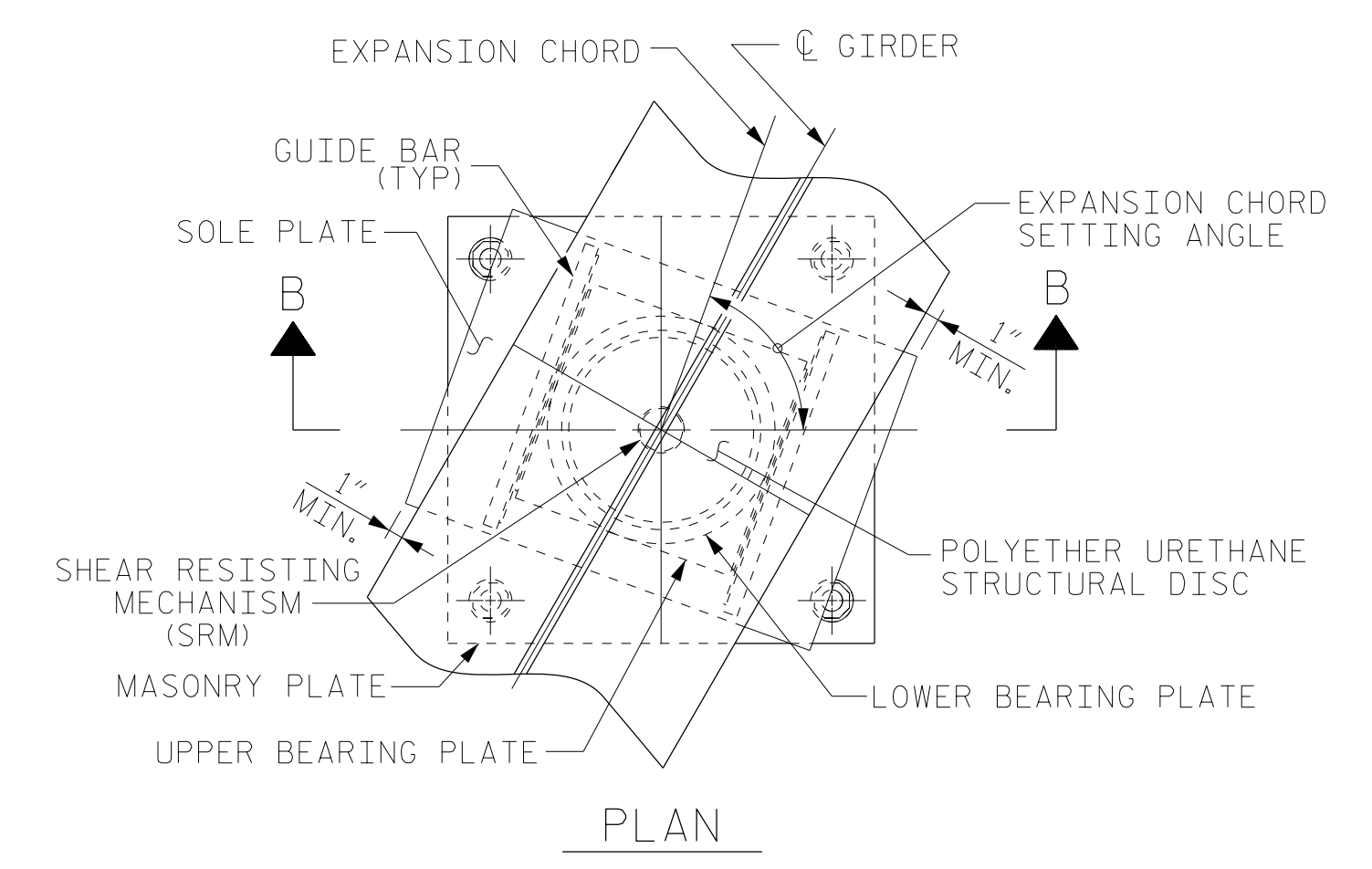
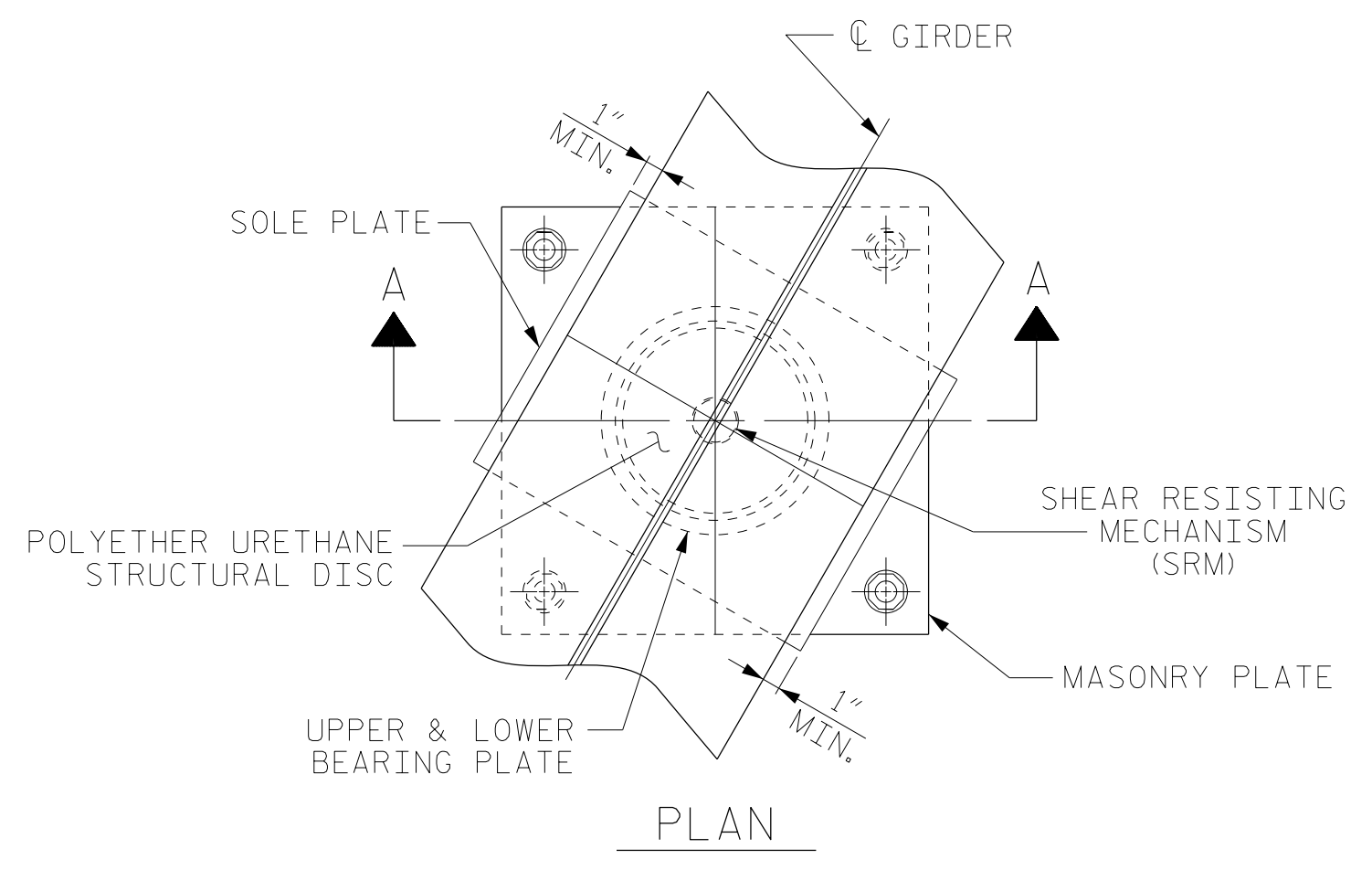
SOLE PLATES SHOULD BE WELDED TO GIRDER FLANGES AND ANCHOR BOLTS SHOULD BE GROUTED BEFORE FALSEWORK IS PLACED.

ALL SURFACES OF BEARING PLATES SHALL BE SMOOTH AND STRAIGHT.

FOR ATTACHMENT OF THE STAINLESS STEEL SHEETS TO THE STEEL SOLE PLATE AND GUIDE BARS, AS WELL AS THE TOP AND SIDE PTFE SHEETS TO THE STEEL UPPER BEARING PLATE, SEE SPECIAL PROVISIONS.

FOR THERMAL SPRAYED COATINGS (METALLIZATION), SEE SPECIAL PROVISIONS.

THE MINIMUM ROTATIONAL CAPACITY FOR ALL BEARINGS SHALL BE 0.02 RADIAN.



NOTE:  
DIMENSIONS "L", "W" AND "T" SHALL BE DETERMINED BY THE BEARING MANUFACTURER, SET "L" SUCH THAT THE MINIMUM EDGE DISTANCE TO THE GIRDER FLANGE IS 1".

### SOLE PLATE DETAILS

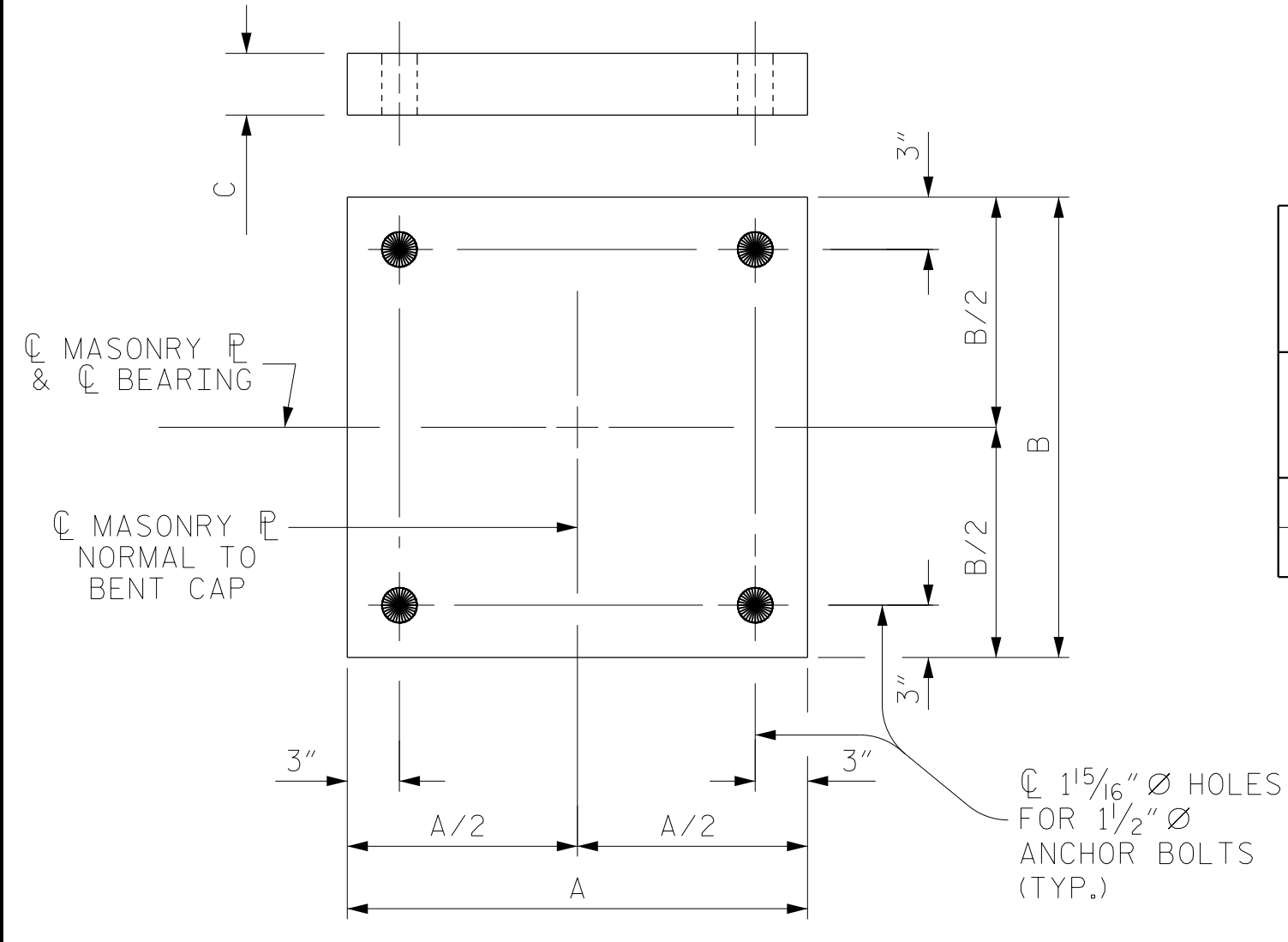
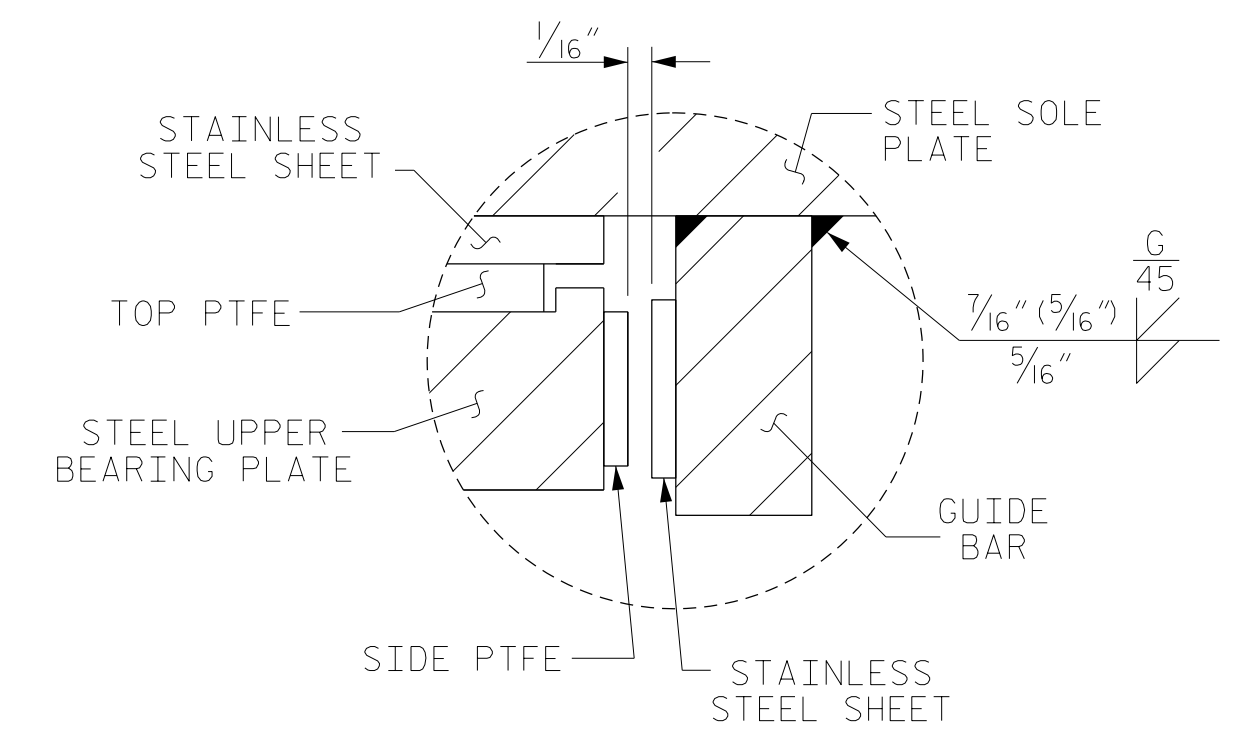
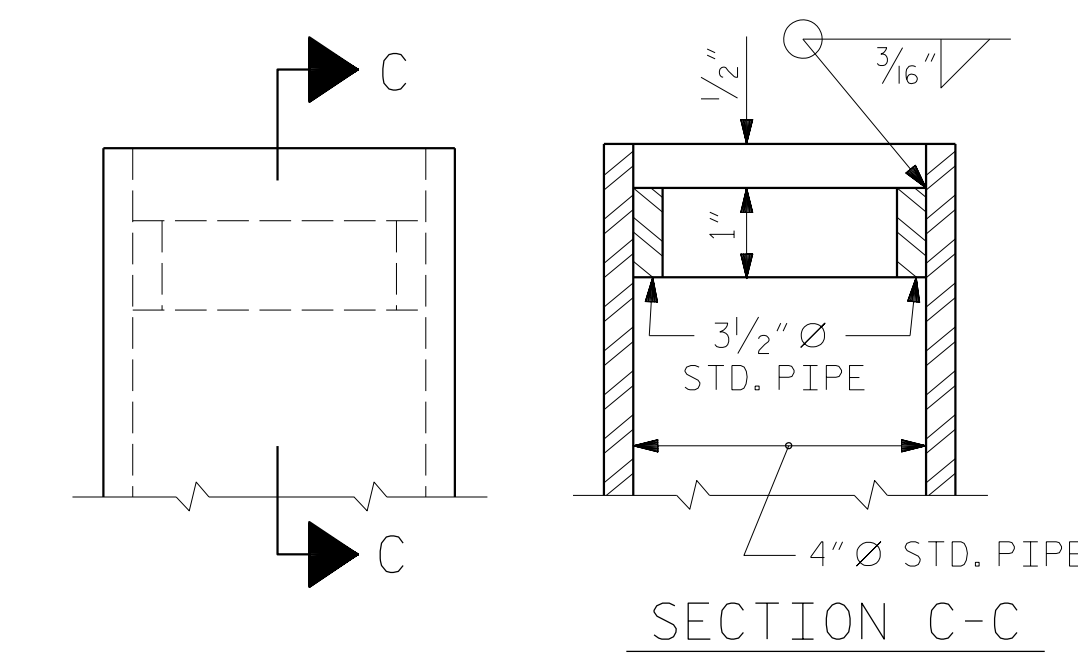
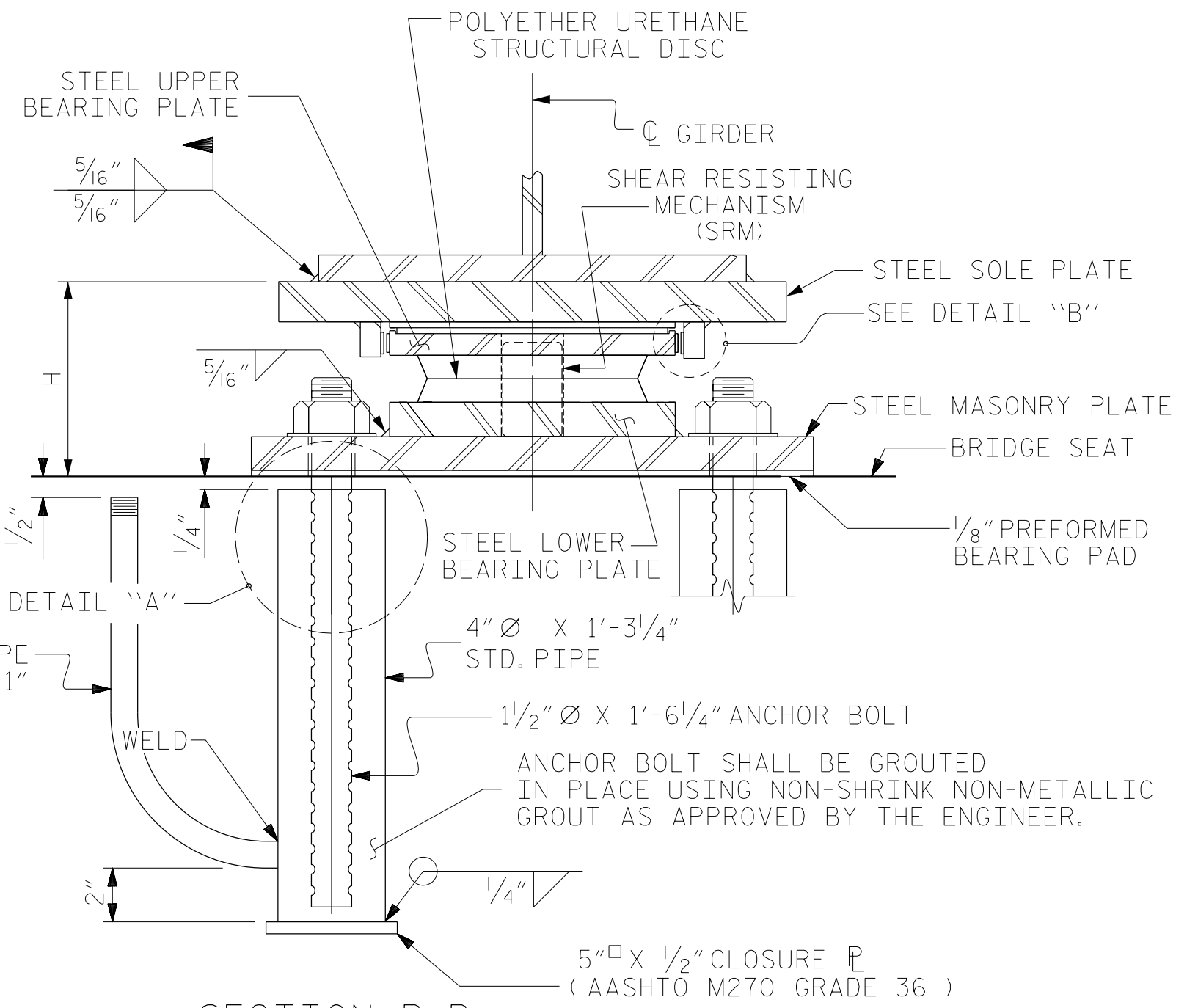
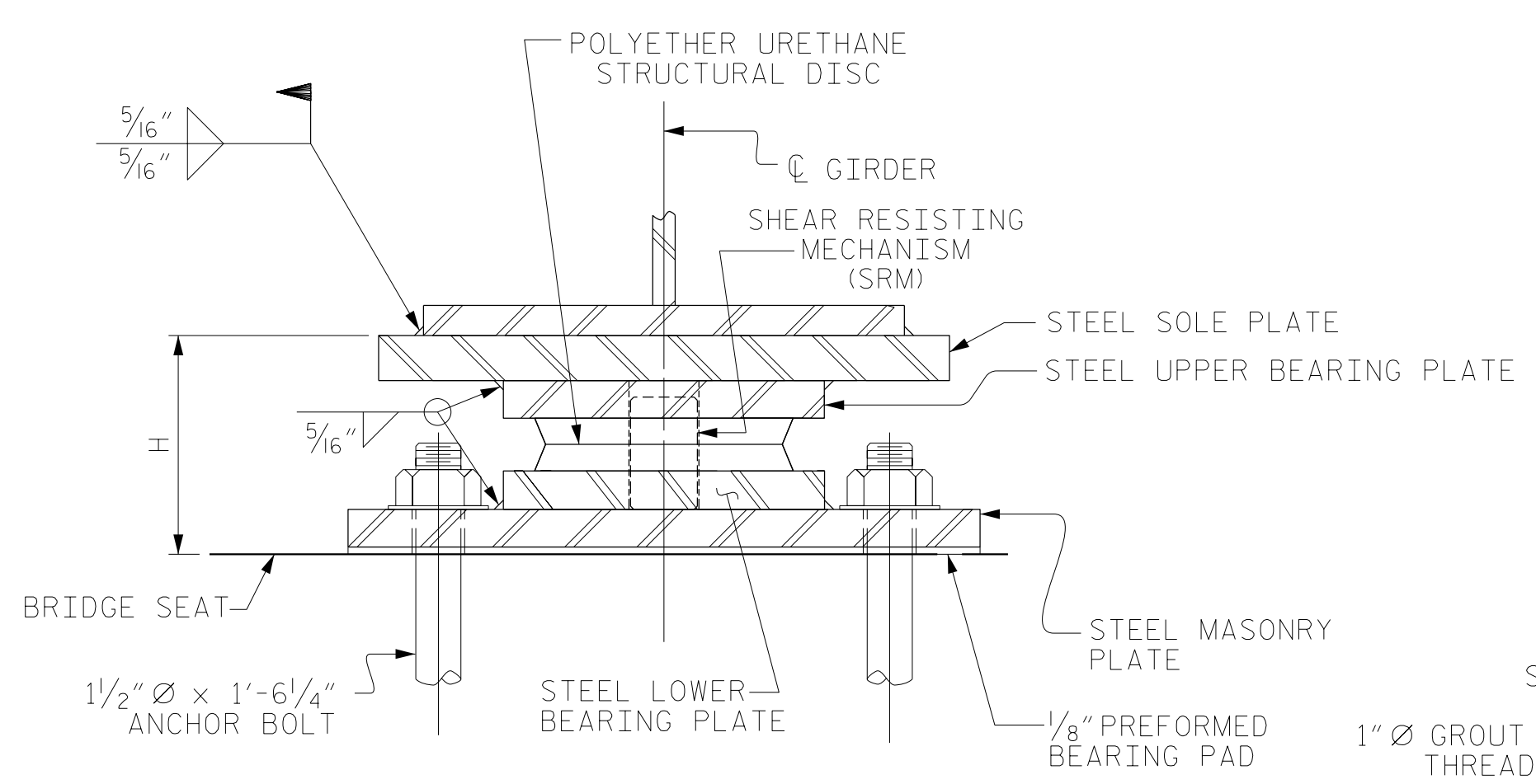
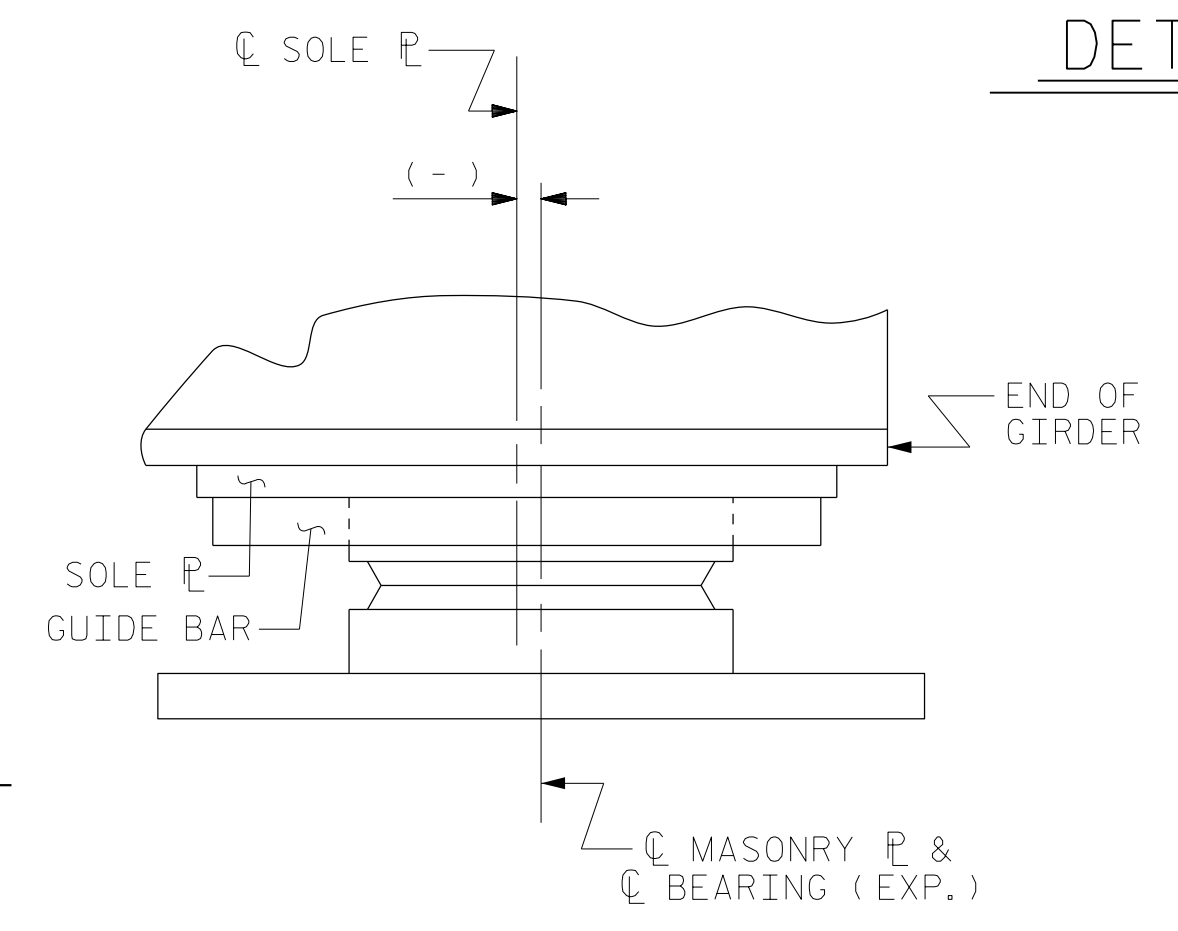


PLATE SETTING DATA (EXPANSION DISC BEARINGS)				
LOCATION	TEMPERATURE AT TIME OF SETTING			*
	45° F	60° F	90° F	
END BENT 1	-3/16"	0"	7/16"	-5/16"
END BENT 2	-3/16"	0"	7/16"	-7/16"

\* CORRECTION FOR END ROTATION DUE TO WEIGHT OF SLAB AND COMPOSITE DEAD LOAD.

### TEMPERATURE SETTING DETAIL



EXPANSION CHORD SETTING ANGLES		
GIRDER	END BENT #1	END BENT #2
#1	42°-21'-40"	43°-59'-12"
#2	42°-32'-35"	44°-09'-19"
#3	42°-43'-25"	44°-19'-21"
#4	42°-54'-08"	44°-29'-18"

DESIGNATIONS		DIMENSIONS				LOADS AND MOVEMENT						
BEARINGS	MASONRY PLATE	LOCATION	NUMBER OF BEARINGS	BEARING H (IN.)	MASONRY PLATE A (IN.)	SOLE PLATE B (IN.)	SOLE PLATE C (IN.)	TOP SLOPE (%)	UNFACTORED VERTICAL LOAD (KIPS)		FACTORED HORIZONTAL LOAD (KIPS)	ONE-WAY MOVEMENT (IN.)
									DC	DW	LIVE LL+IM	
DB1	M1	EB1	4	5 1/2"	25 1/2"	25 1/2"	3/4"	0.60	150	14	125	57
DB2	M2	B1	4	7 1/4"	30"	30"	1"	0.60	560	50	260	185
DB1	M1	EB2	4	5 1/2"	25 1/2"	25 1/2"	3/4"	0.60	155	14	120	58

PROJECT NO. U-2579AB  
 FORSYTH COUNTY  
 STATION: 22+26.35 -Y1B-

ASSEMBLED BY : TWL DATE : 11/19  
 CHECKED BY : JMR DATE : 11/19  
 DRAWN BY : TMG 08/13 REV. 12/17 MAA/THC  
 CHECKED BY : EXP 10/13

RS&H  
 8521 Six Forks Road, Suite 400  
 919-926-4100 FAX 919-846-9080  
 www.rsandh.com  
 North Carolina License No. 50737-5403-C&E

STATE OF NORTH CAROLINA  
 DEPARTMENT OF TRANSPORTATION  
 RALEIGH

STANDARD  
 DISC BEARING  
 DETAILS

REVISIONS						SHEET NO.
NO.	BY:	DATE:	NO.	BY:	DATE:	S1-19
1			3			TOTAL SHEETS 47
2			4			

DOCUMENT NOT CONSIDERED FINAL UNLESS ALL SIGNATURES COMPLETED