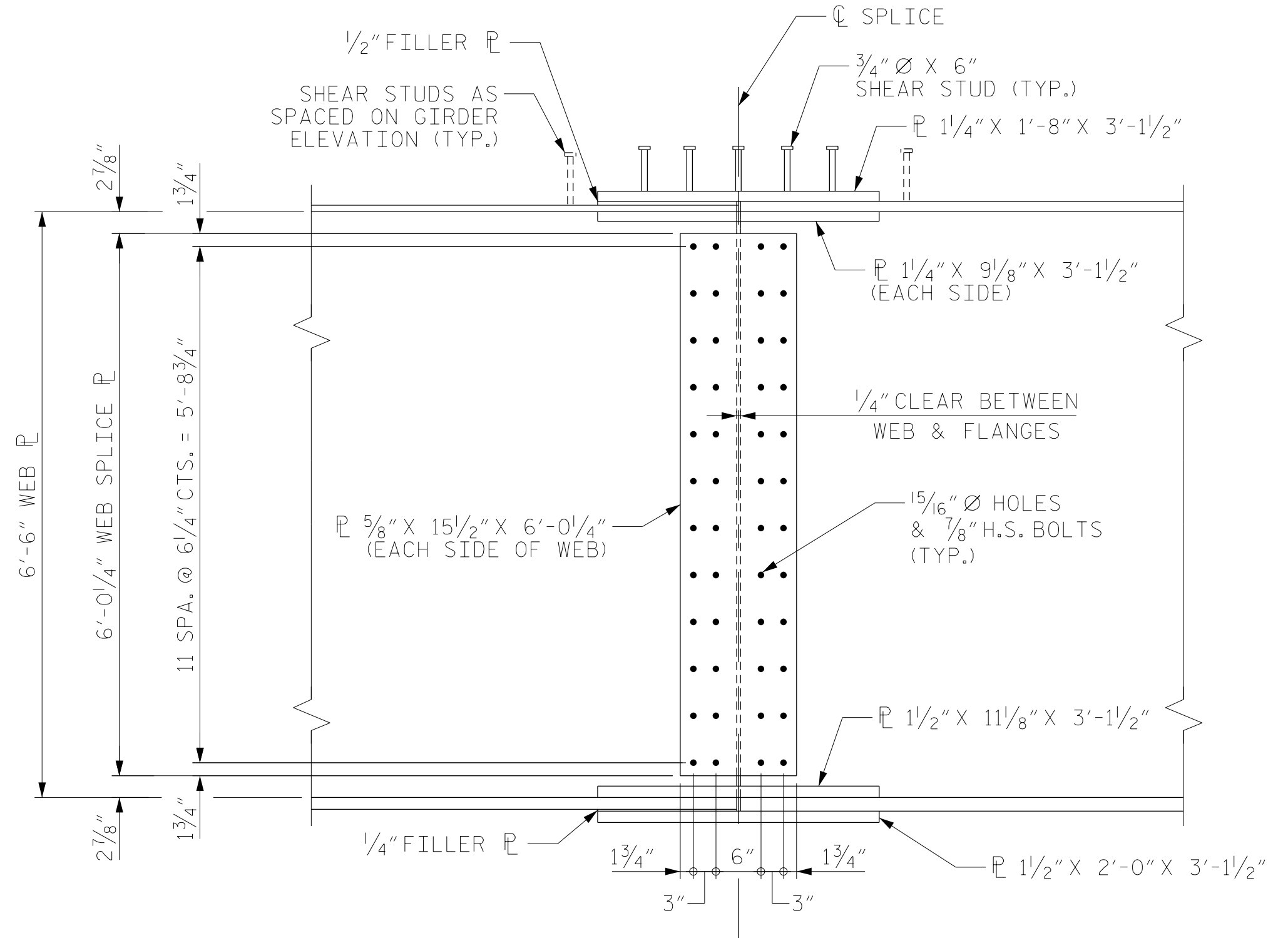
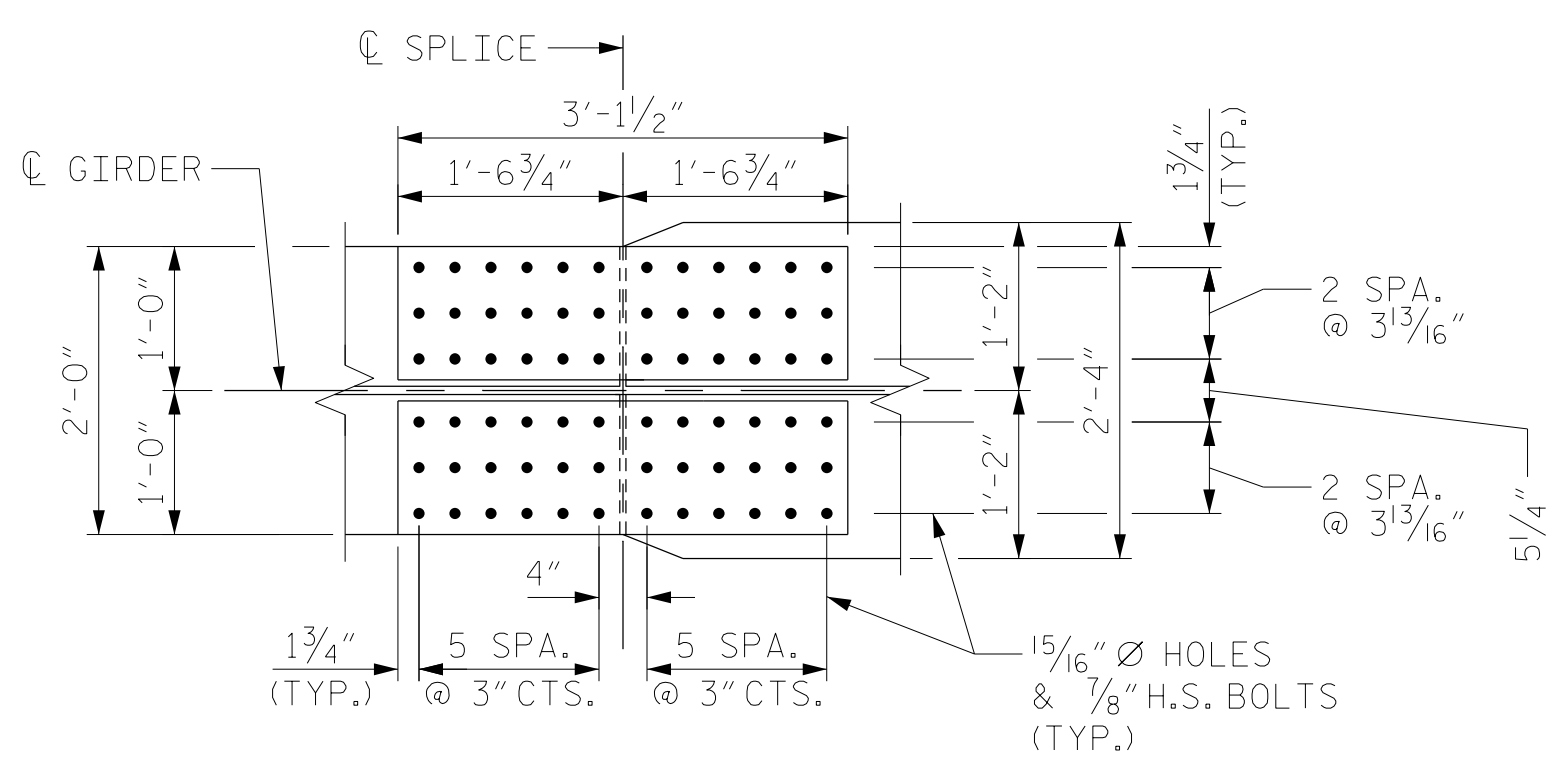


PLAN (TOP OF TOP FLANGE)
HIDDEN LINES NOT SHOWN FOR CLARITY



ELEVATION

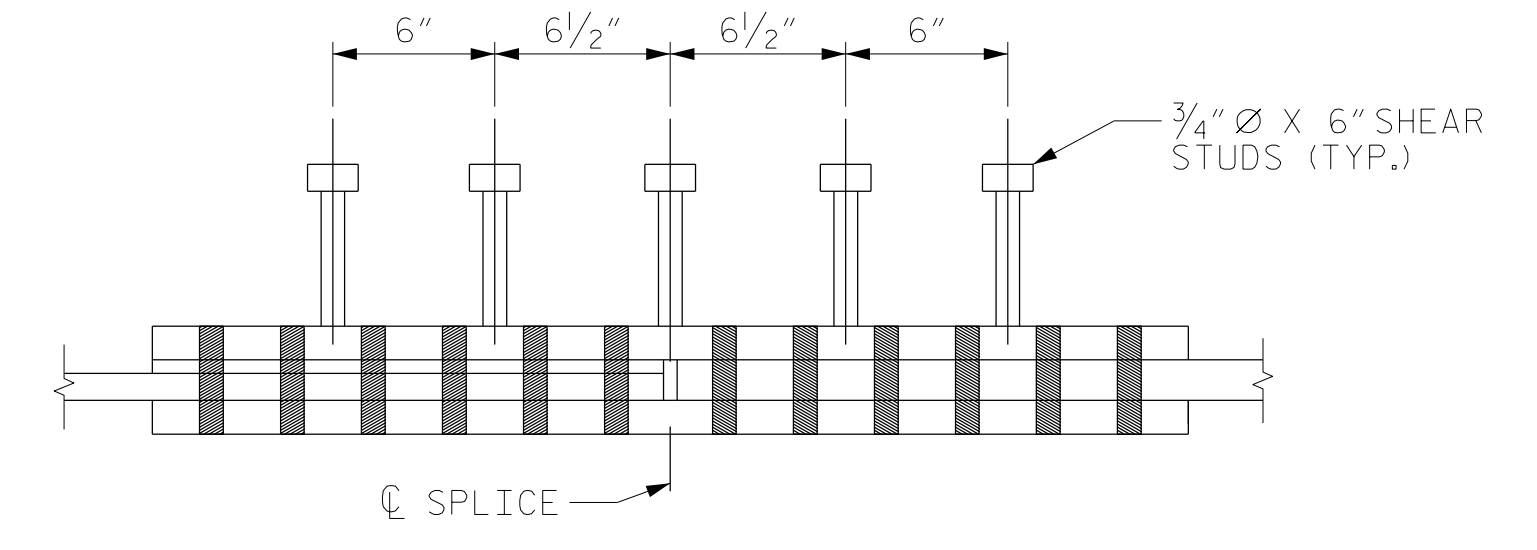


PLAN (BOTTOM OF TOP FLANGE)

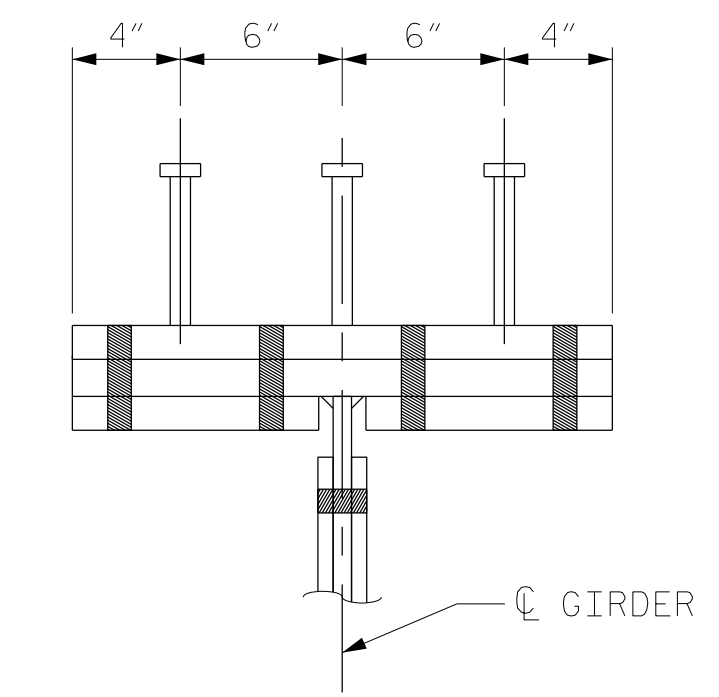
FS1 BOLTED FIELD SPLICE
FS2 SIMILAR BY ROTATION

NOTES:

- SHEAR CONNECTIONS ARE TO BE SHOP WELDED ON TOP PLATE BEFORE FIELD ASSEMBLY.
- THREADS ARE TO BE EXCLUDED IN ALL FLANGE SPLICES.
- CLASS B FAYING SURFACE SHALL BE USED.



ELEVATION



SECTION
NOTE: SMALLER FLANGE WIDTH SHOWN

SHEAR STUD DETAIL FOR TOP FLANGE SPLICE PLATES

PROJECT NO. U-2579AB
FORSYTH COUNTY
STATION: 22+26.35 -Y1B-

SHEET 4 OF 4



RS&H
RS&H Architects-Engineers-Planners, Inc.
8521 Six Forks Road, Suite 400
919-926-4100 FAX 919-846-9080
www.rsandh.com
North Carolina License No. 50737-F-0403-C-28

STATE OF NORTH CAROLINA
DEPARTMENT OF TRANSPORTATION
RALEIGH
SUPERSTRUCTURE
STRUCTURAL STEEL
DETAILS

REVISIONS						SHEET NO.
NO.	BY:	DATE:	NO.	BY:	DATE:	S1-16
1			3			TOTAL SHEETS
2			4			47

DOCUMENT NOT CONSIDERED FINAL UNLESS ALL SIGNATURES COMPLETED

DRAWN BY : <u>TRM</u>	DATE : <u>07/2019</u>
CHECKED BY : <u>JMR</u>	DATE : <u>11/2019</u>
DESIGN ENGINEER OF RECORD: <u>MAL</u>	DATE : <u>11/2019</u>