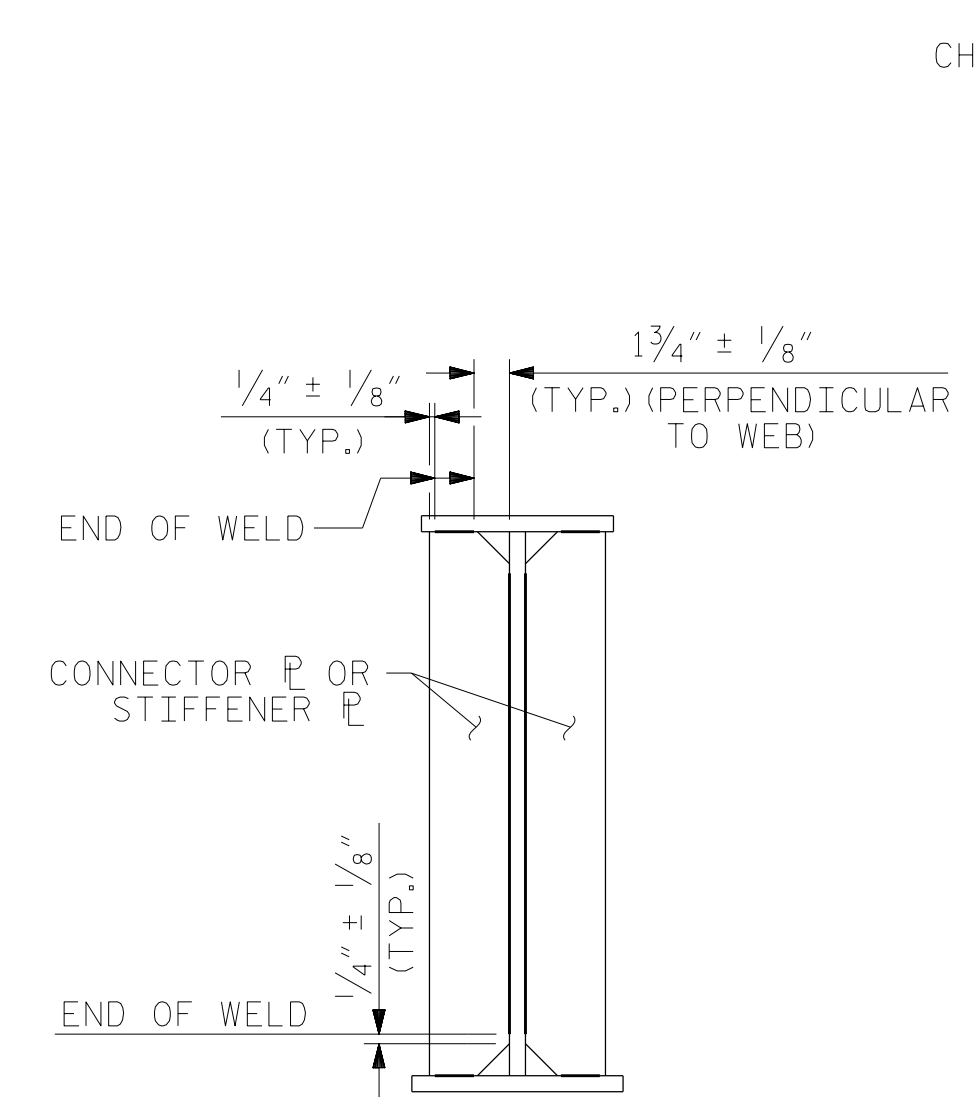
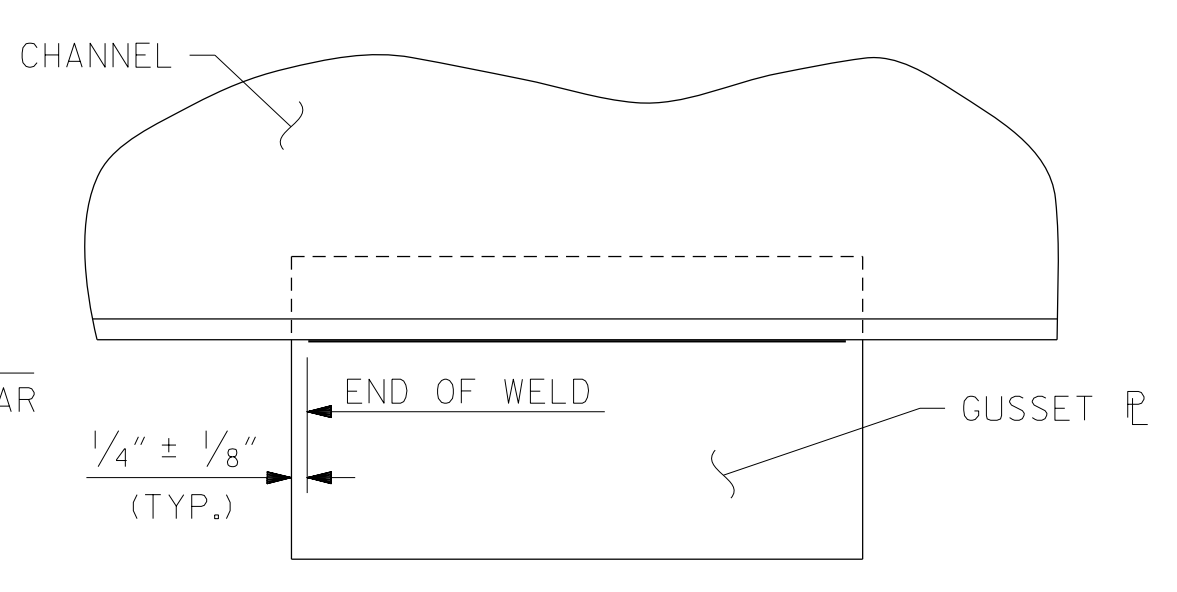


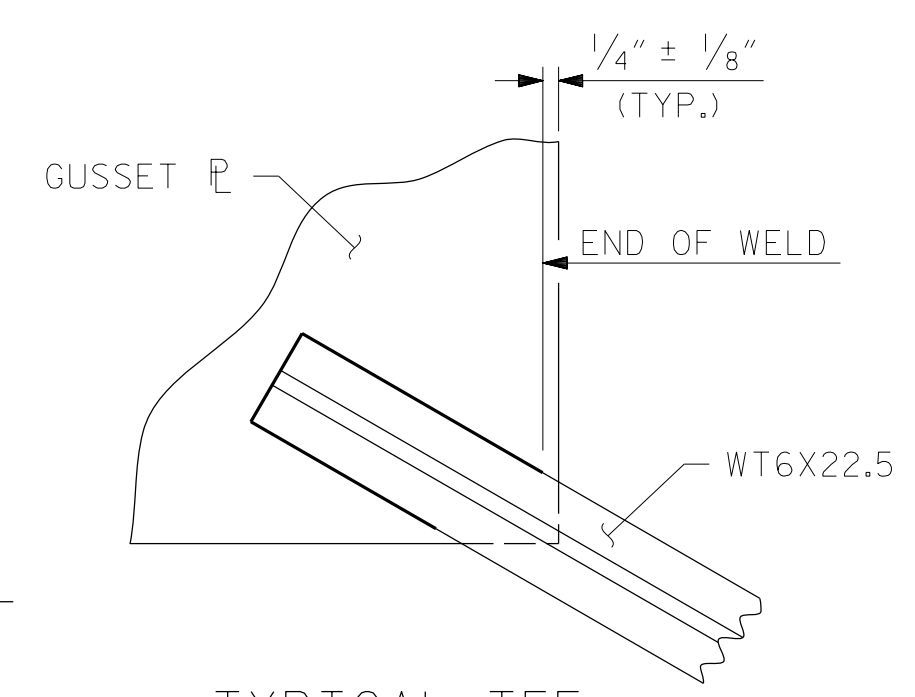
TYPICAL END CROSSFRAME CF1



TYPICAL STIFFENER OR CONNECTOR PLATE CONNECTIONS
(INTERIOR GIRDER SHOWN, HOLES NOT SHOWN)

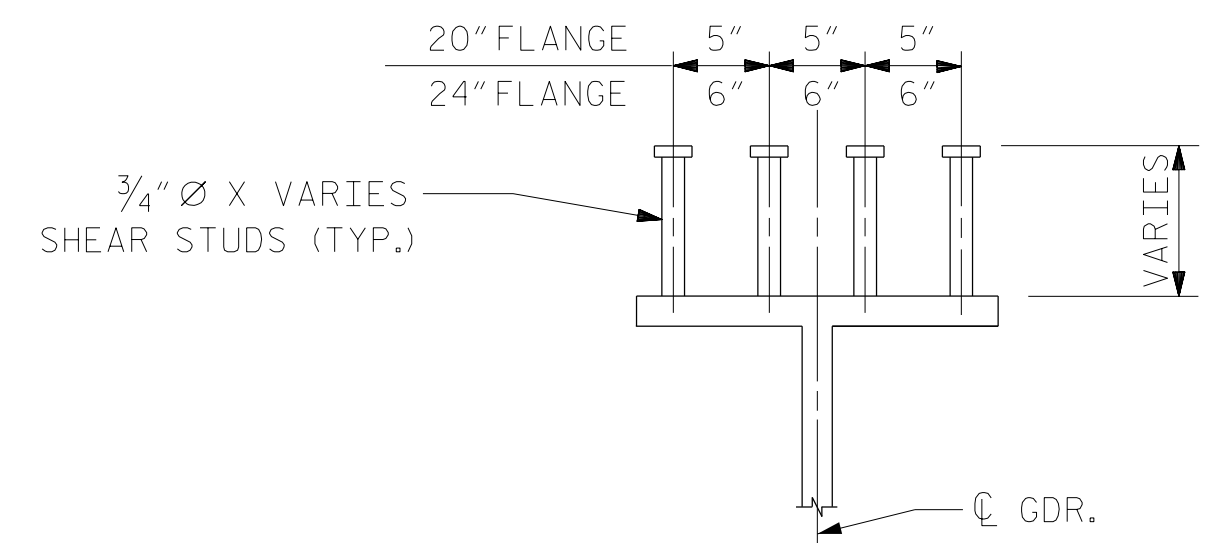


TYPICAL GUSSET PLATE CONNECTION



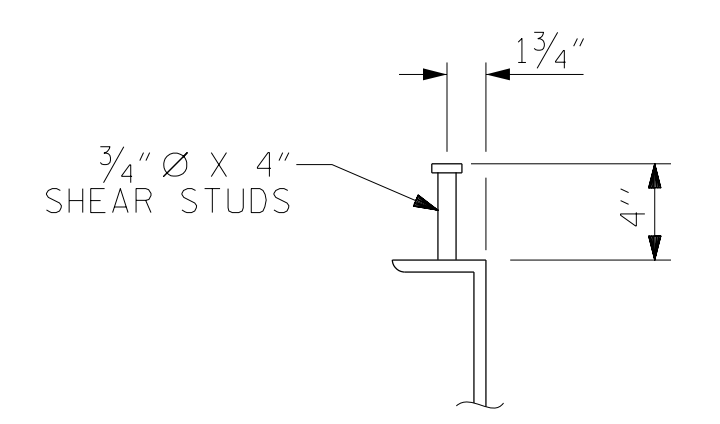
TYPICAL TEE TO GUSSET PLATE CONNECTION
(TYPICAL BOTH ENDS OF CONNECTION)

WELD TERMINATION DETAILS



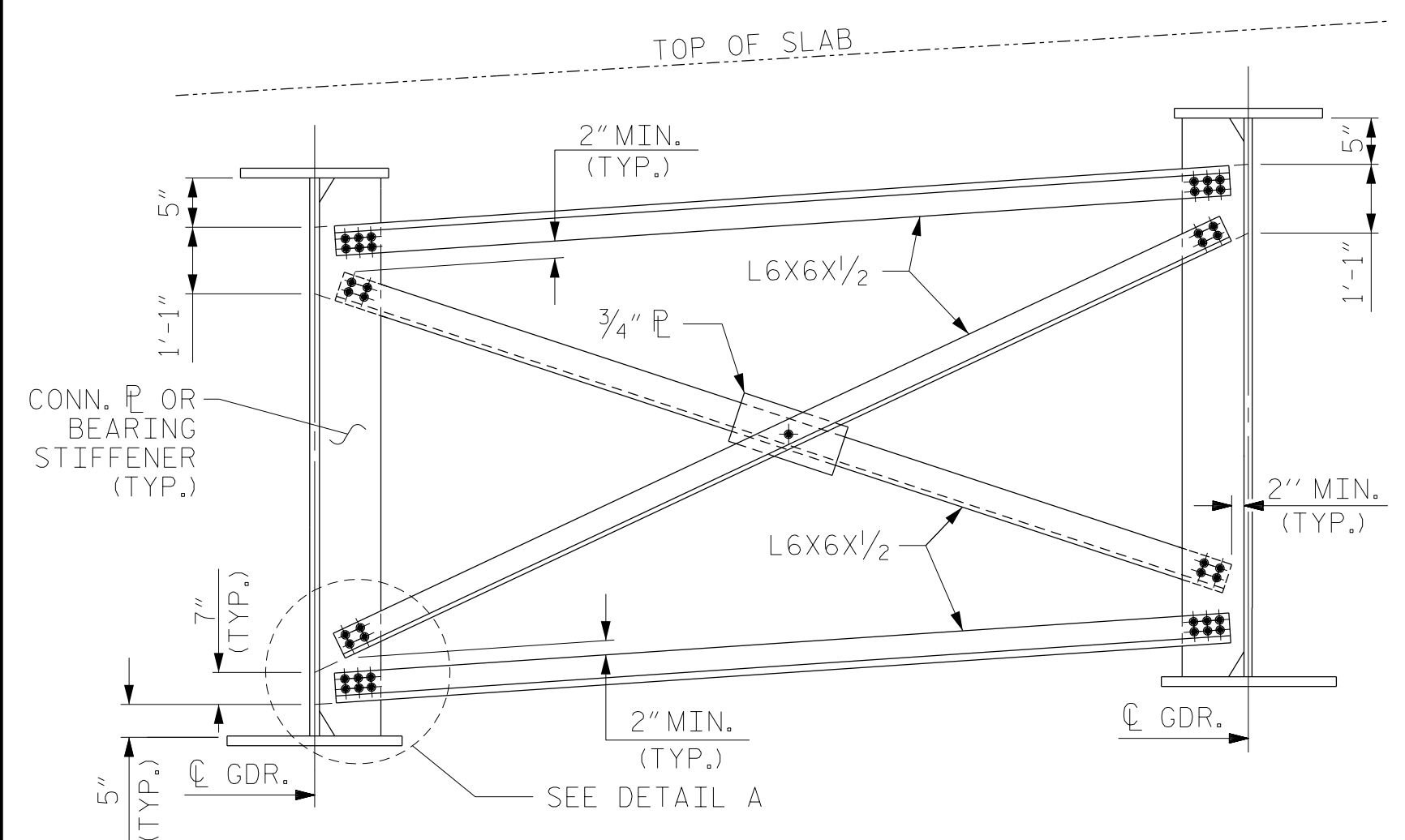
ON GIRDERS

FOR STUD HEIGHTS, SEE STRUCTURAL STEEL DETAILS SHEET 1 OF 4. SHEAR STUDS ARE CENTERED ABOUT C.G. GDR.

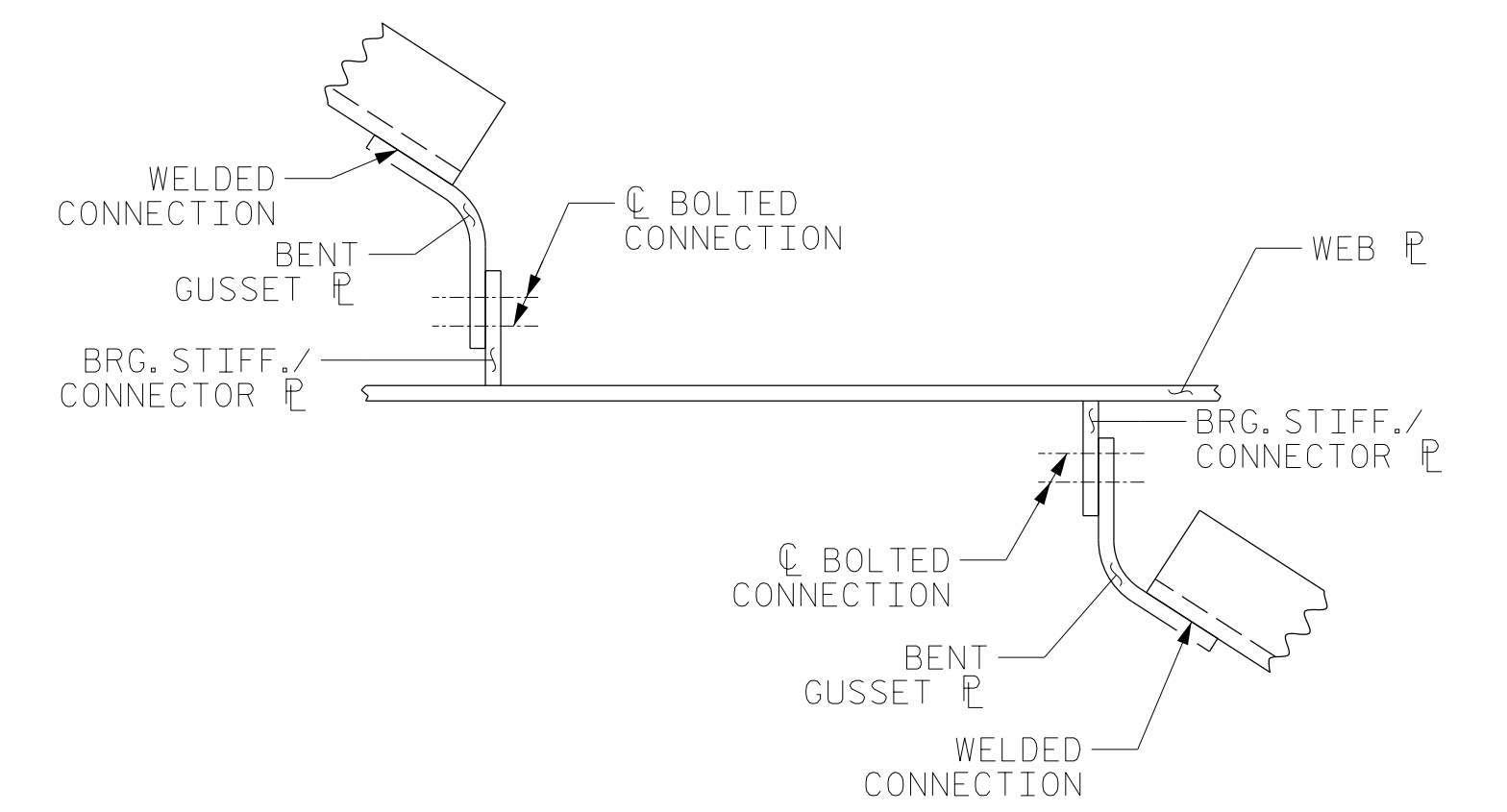


ON DIAPHRAGMS

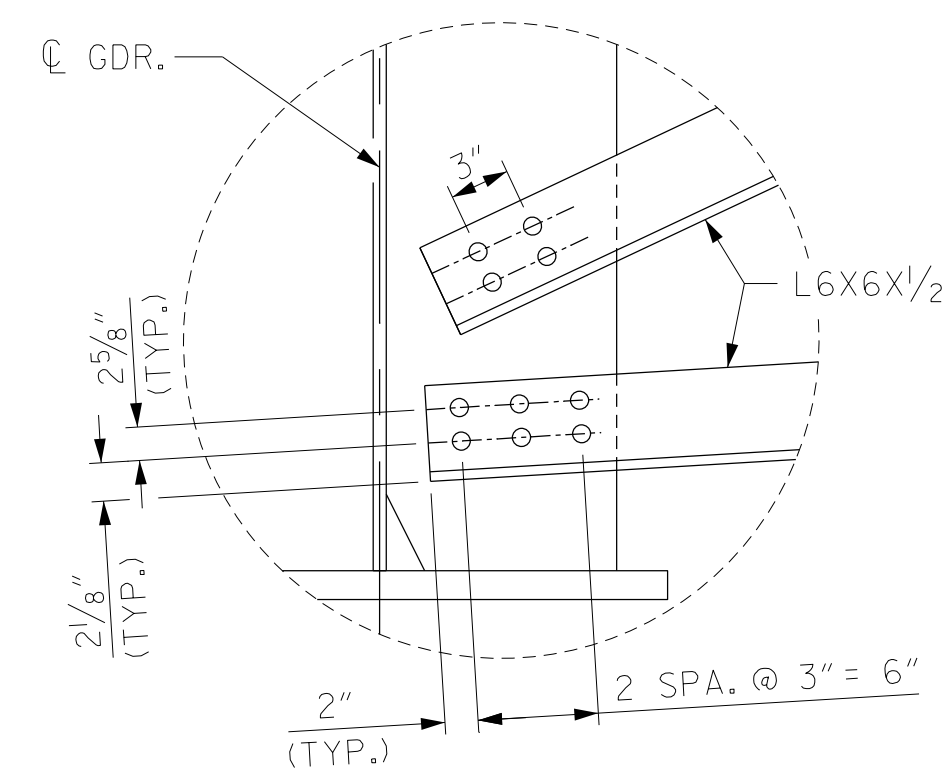
SHEAR STUD DETAILS



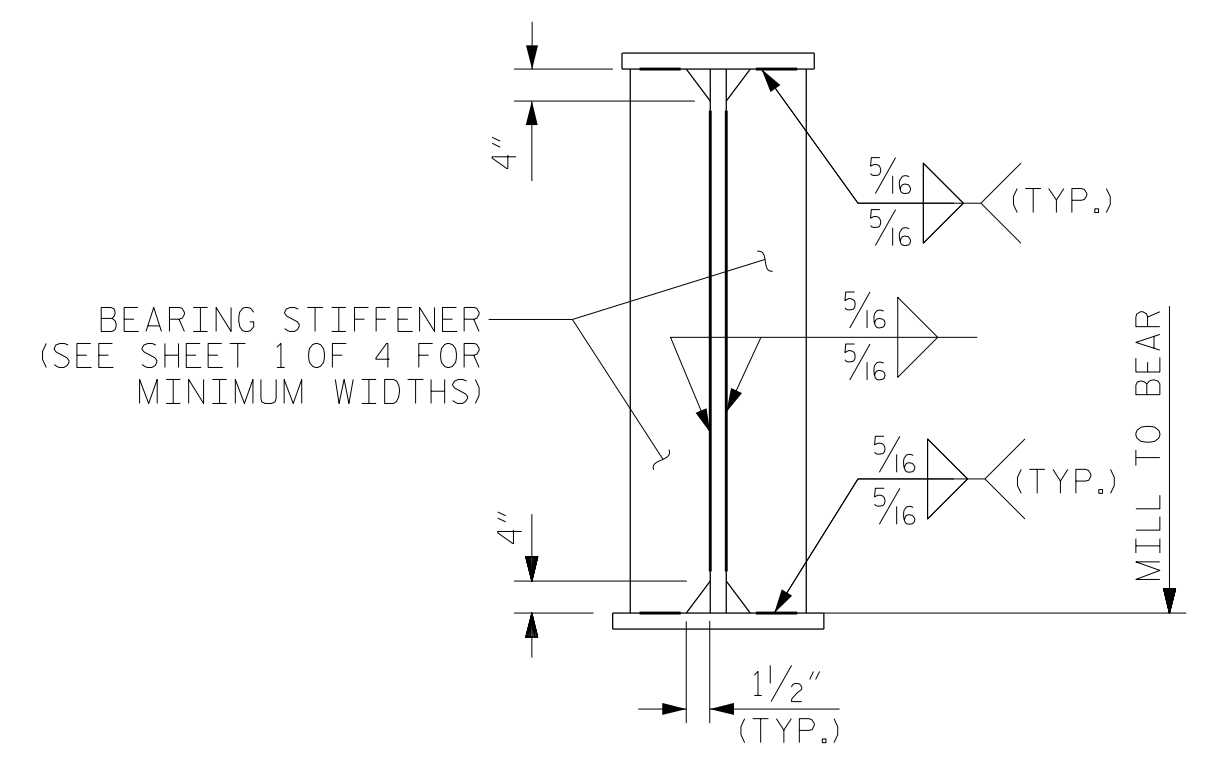
TYPICAL INTERMEDIATE CROSSFRAME CF2



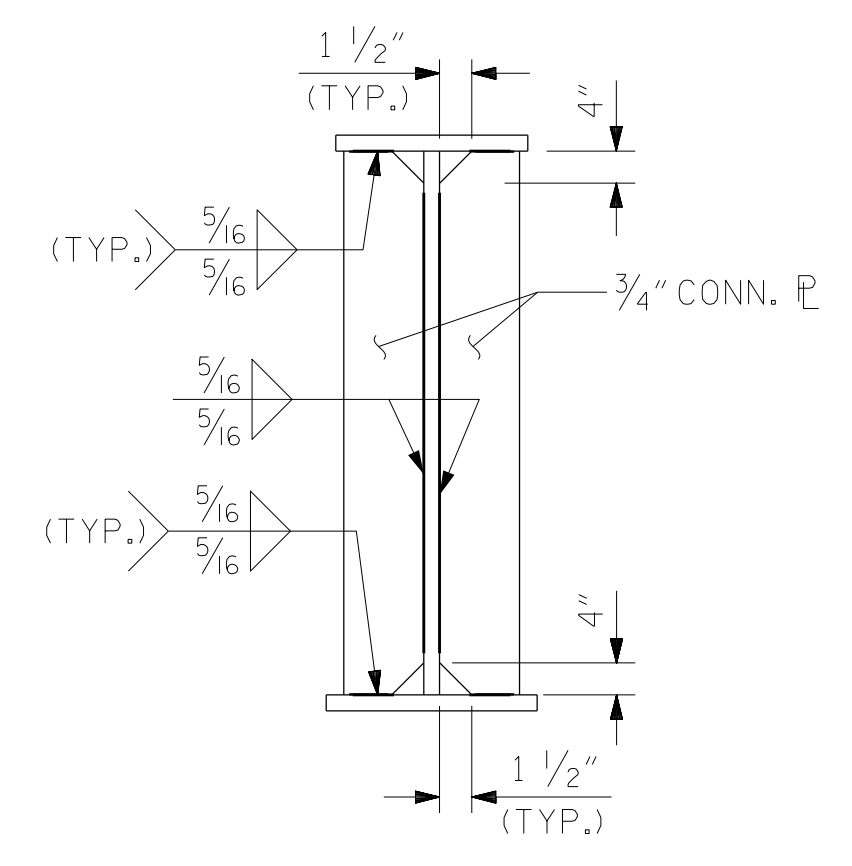
BENT GUSSET PLATE



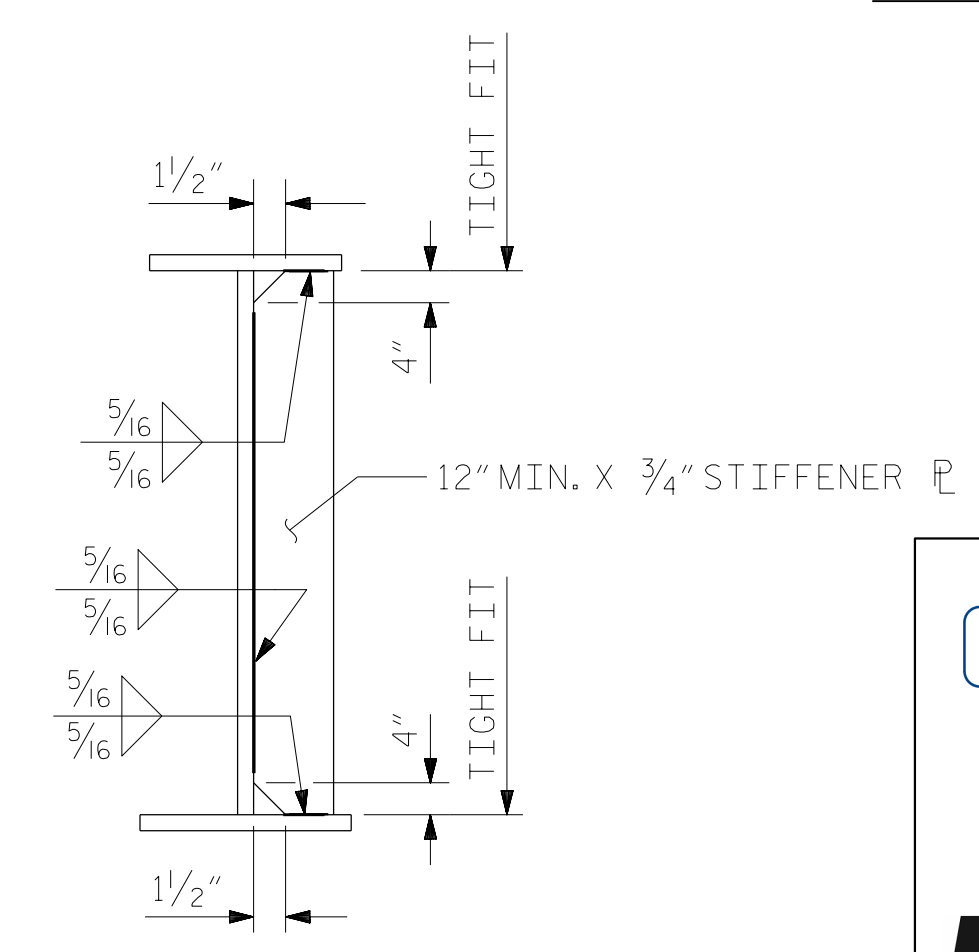
DETAIL A



BEARING STIFFENER
BEARING STIFFENER MAY REQUIRE COPING IF WIDER THAN BOTTOM FLANGE



CONNECTOR PLATE



INTERMEDIATE STIFFENER

NOTES:

ALL STRUCTURAL STEEL SHALL BE AASHTO M270 GRADE 50W AND PAINTED IN ACCORDANCE WITH SYSTEM 5 OR SYSTEM 6 OF THE STRUCTURAL STEEL SHOP COATINGS PROGRAMS AND SECTION 442-8 OF THE STANDARD SPECIFICATIONS UNLESS OTHERWISE NOTED ON THE PLANS.

ALL DIMENSIONS SHOWN ARE HORIZONTAL OR VERTICAL, UNLESS OTHERWISE NOTED.

ALL FIELD CONNECTIONS TO BE 7/8" DIA. F3125 GRADE A325 HIGH STRENGTH BOLTS, UNLESS OTHERWISE NOTED.

STUDS ON GIRDERS MAY BE SHIFTED UP TO 1 INCH IF NECESSARY TO CLEAR FLANGE SPLICE WELD.

TENSION ON THE ASTM F3125 GRADE A325 BOLTS SHALL BE CALIBRATED USING DIRECT TENSION INDICATOR WASHERS IN ACCORDANCE WITH ARTICLE 440-8 OF THE STANDARD SPECIFICATIONS.

STRUCTURAL STEEL ERECTION IN A CONTINUOUS UNIT SHALL BE COMPLETE BEFORE FALSEWORK OR FORMS ARE PLACED ON THE UNIT.

PERMITTED FLANGE AND WEB SHOP SPLICES SHALL NOT BE LOCATED WITHIN 15 FEET OF MAXIMUM DEAD LOAD DEFLECTION NOR WITHIN 15 FEET OF INTERMEDIATE BEARINGS. KEEP 2 FEET MINIMUM BETWEEN WEB AND FLANGE SHOP SPLICES. KEEP 6" MINIMUM BETWEEN CONNECTOR PLATE OR TRANSVERSE STIFFENER WELDS AND WEB OR FLANGE SHOP SPLICES.

BEARING STIFFENERS ARE TO BE PLACED NORMAL TO THE WEB OF THE GIRDER AND SHALL BE PLUMB.

FABRICATORS SHALL DETAIL DIAPHRAGM MEMBERS AND CONNECTIONS FOR STEEL DEAD LOAD FIT UP. GIRDERS SHALL BE PLUMB AFTER THE STEEL DEAD LOAD IS APPLIED.

PROJECT NO. U-2579AB
FORSYTH COUNTY
STATION: 22+26.35 -Y1B-

SHEET 2 OF 4



RS&H Architects-Engineers-Planners, Inc.
8521 Six Forks Road, Suite 400
919-926-4100 FAX 919-846-9080
www.rsandh.com
North Carolina License No. 50737-5403-C&E

STATE OF NORTH CAROLINA
DEPARTMENT OF TRANSPORTATION
RALEIGH
SUPERSTRUCTURE
STRUCTURAL STEEL
DETAILS

REVISIONS						SHEET NO.
NO.	BY:	DATE:	NO.	BY:	DATE:	S1-14
1			3			TOTAL SHEETS
2			4			47

DRAWN BY : TRM DATE : 07/2019
CHECKED BY : JMR DATE : 11/2019
DESIGN ENGINEER OF RECORD: MAL DATE : 11/2019

DOCUMENT NOT CONSIDERED FINAL UNLESS ALL SIGNATURES COMPLETED