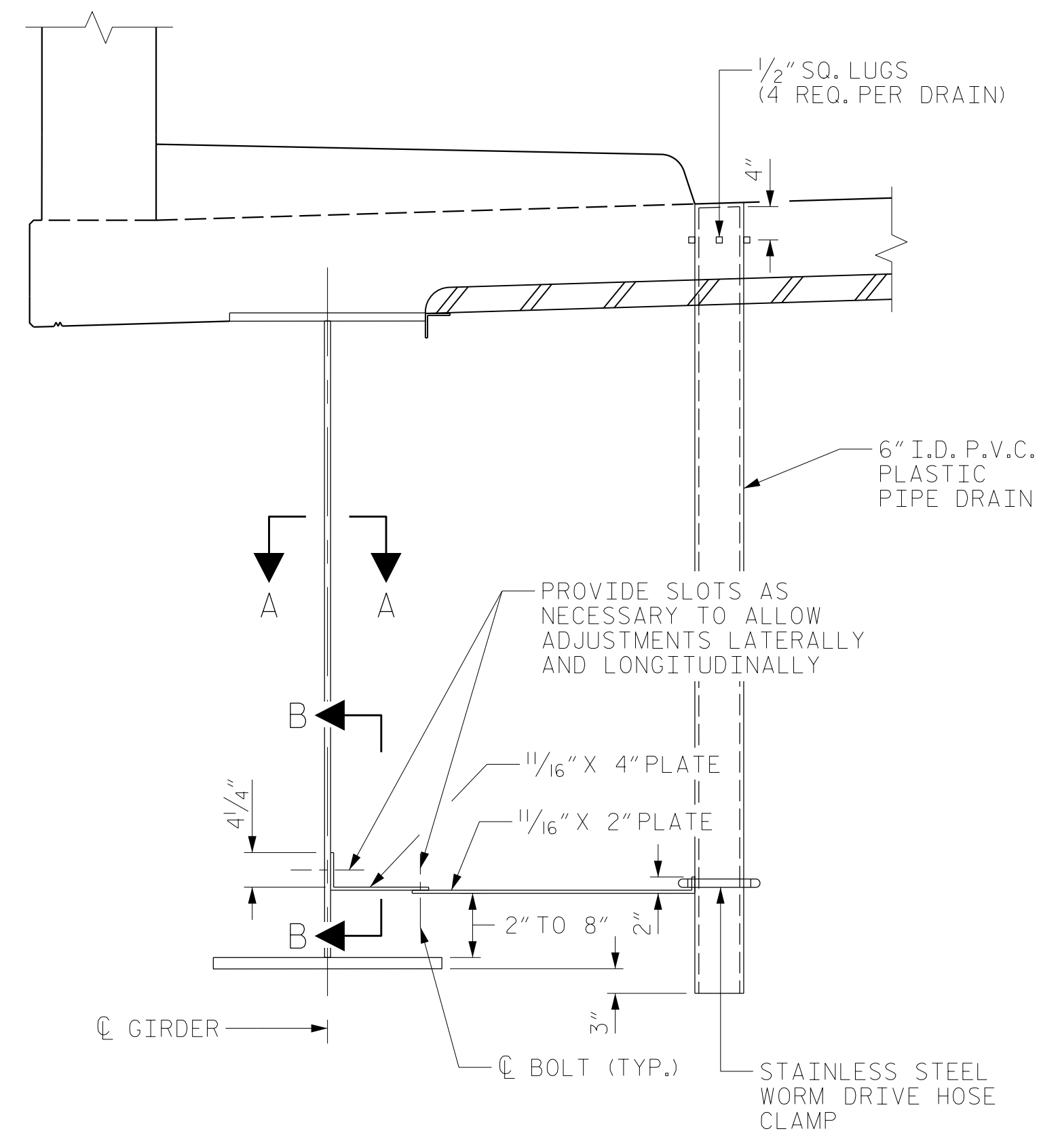
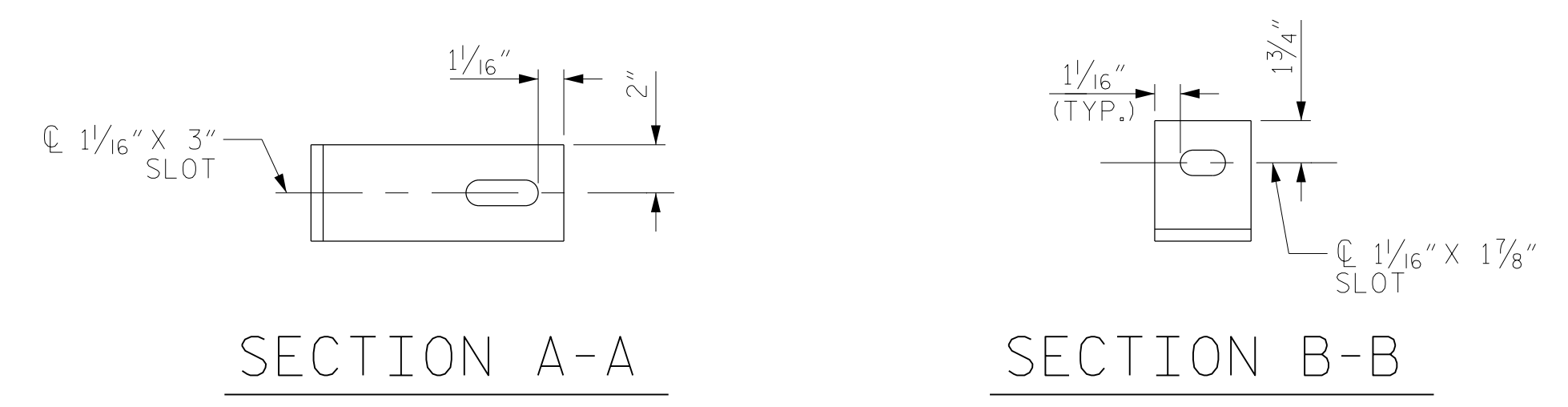


**SECTION THROUGH END BENT DIAPHRAGM**

\* #5 "G" BAR MAY BE SHIFTED SLIGHTLY, AS NECESSARY, TO CLEAR REINFORCING STEEL AND STIRRUPS  
 DIMENSIONS SHOWN ARE PERPENDICULAR TO  $\phi$  JOINT UNLESS NOTED OTHERWISE  
 END BENT 1 SHOWN, END BENT 2 SIMILAR

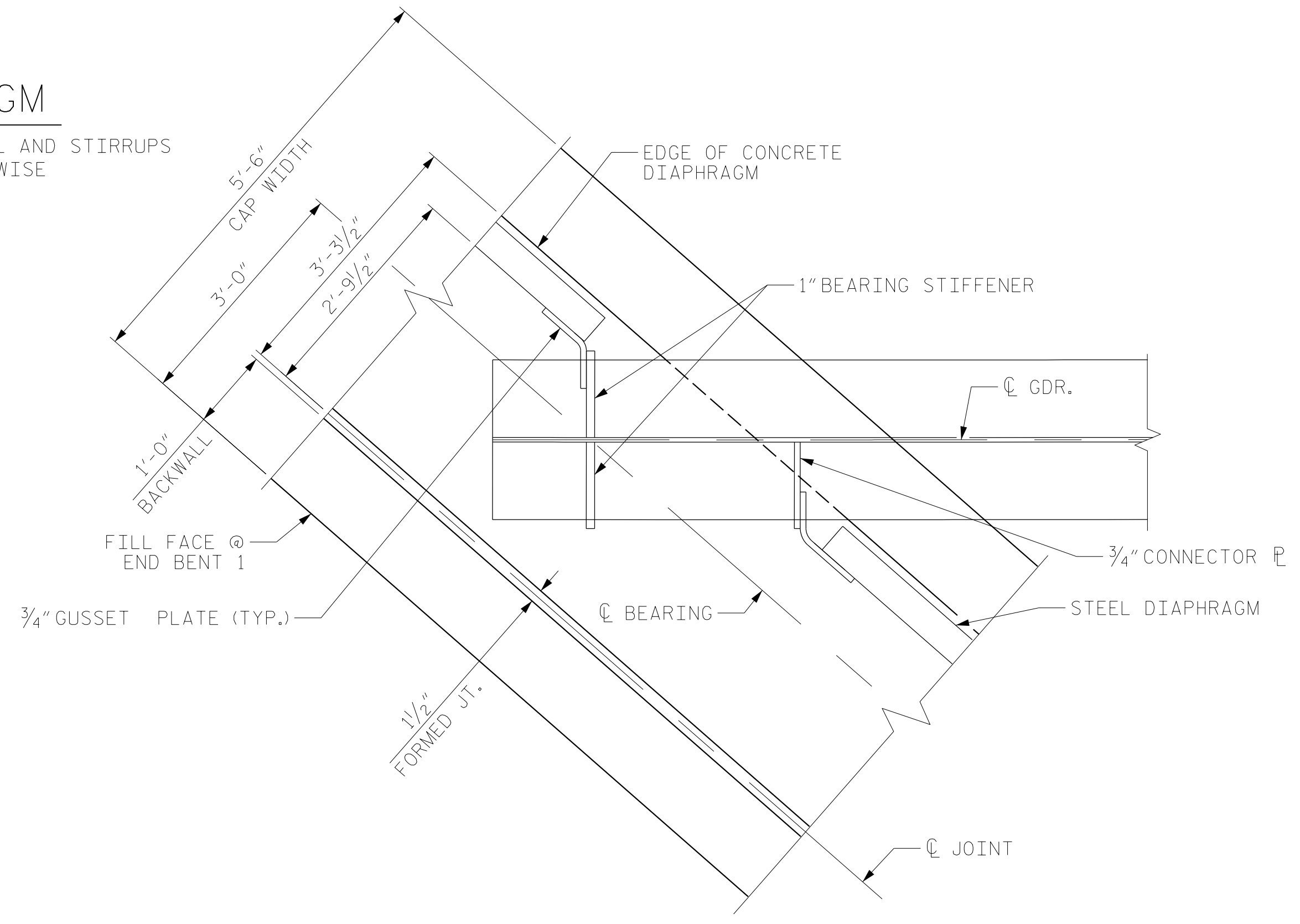


**DRAIN CONNECTOR DETAIL**



**NOTES:**

- PVC DECK DRAINS SHALL BE PAINTED WITH TWO COATS OF BROWN PRIMER MEETING THE REQUIREMENTS OF ARTICLE 1080-09 OF THE STANDARD SPECIFICATIONS. EACH COATS SHALL BE 2 DRY MILLS THICK. DECK DRAINS SHALL BE ROUGHENED PRIOR TO PAINTING. NO SEPARATE PAYMENT SHALL BE MADE FOR PAINTING PVC DECK DRAINS AS THIS IS CONSIDERED INCIDENTAL TO THE PAY ITEM FOR REINFORCED CONCRETE SLAB.
- TOP OF FLOOR DRAIN TO BE SET  $\frac{3}{8}$ " BELOW SURFACE OF SLAB.
- 4 -  $\frac{1}{2}$ " SQUARE LUGS TO BE GLUED TO THE PVC PLASTIC PIPE AT EQUAL SPACES AROUND THE PIPE DRAIN APPROXIMATELY 4" FROM THE TOP OF THE PIPE
- BOLT SIZE TO BE SAME AS DIAPHRAGMS AND CROSSFRAME CONNECTIONS. STAINLESS STEEL WORM DRIVE HOSE CLAMP SHALL BE COMMERCIAL QUALITY.
- THE 6" DIA. PVC PIPE AND FITTINGS SHALL BE SCHEDULE 40 AND CONFORM TO ASTM D1785.
- PLATES SHALL CONFORM TO AASHTO M270 GRADE 50W STEEL OR APPROVED EQUAL.
- COUPLING IN DRAIN PIPE WILL BE PERMITTED AS APPROVED BY THE ENGINEER.
- FOR ADDITIONAL NOTES, SEE SHEET 1 OF 2.



**PLAN OF END BENT DIAPHRAGM**

END BENT 1 SHOWN, END BENT 2 SIMILAR

PROJECT NO. U-2579AB  
FORSYTH COUNTY  
 STATION: 22+26.35 -Y1B-

SHEET 2 OF 2



STATE OF NORTH CAROLINA  
 DEPARTMENT OF TRANSPORTATION  
 RALEIGH  
 SUPERSTRUCTURE  
 TYPICAL SECTION  
 DETAILS

DRAWN BY :	MRA	DATE :	10/2019
CHECKED BY :	JMR	DATE :	11/2019
DESIGN ENGINEER OF RECORD:	MAL	DATE :	11/2019

DOCUMENT NOT CONSIDERED  
 FINAL UNLESS ALL  
 SIGNATURES COMPLETED

REVISIONS						SHEET NO.
NO.	BY:	DATE:	NO.	BY:	DATE:	S1-8
1			3			TOTAL SHEETS
2			4			47