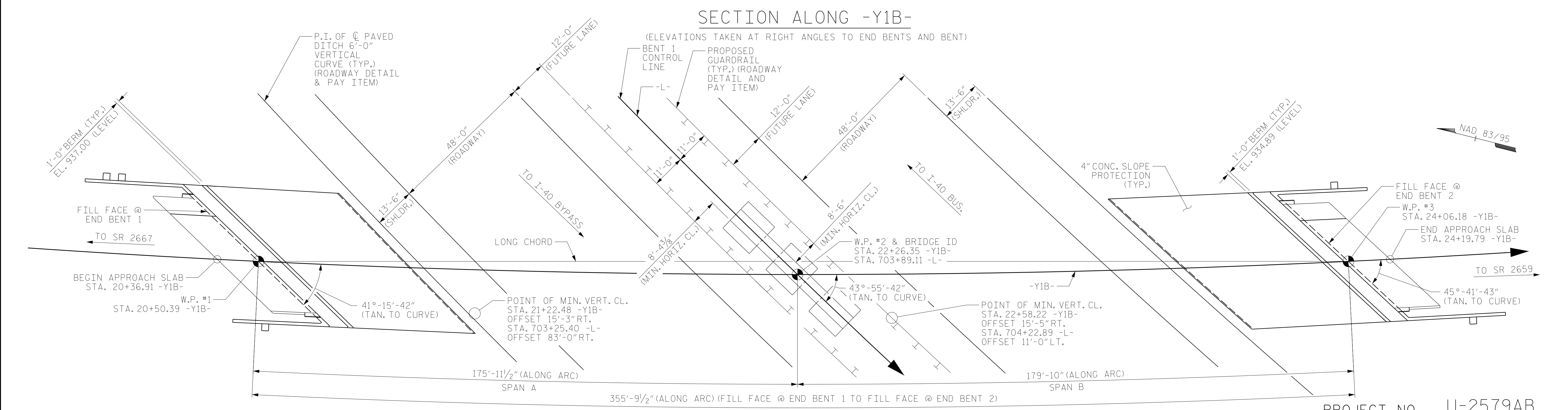
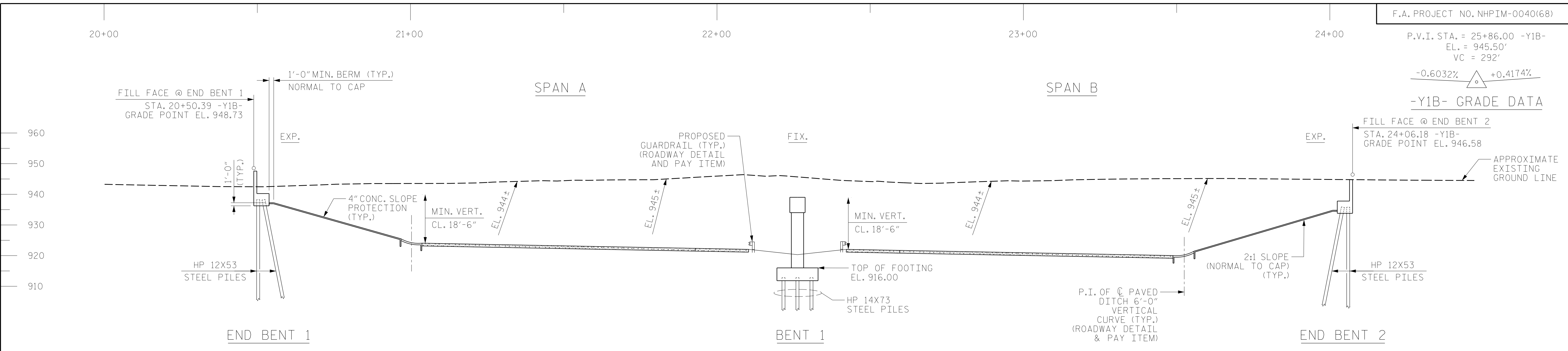


P.V.I. STA. = 25+86.00 -Y1B-
EL. = 945.50'
VC = 292'

-0.6032% \triangle +0.4174%
-Y1B- GRADE DATA



HORIZONTAL CURVE DATA -Y1B-

P.I. STA. = 21+42.48
 Δ = 20°-48'-25.4" (LT)
 D = 01°-33'-09.8"
 L = 1,340.03'
 T = 677.48'
 R = 3690.00'
 SE = 0.03

HORIZONTAL CURVE DATA -L-

P.I. STA. = 707+75.32
 Δ = 38°-30'-11.9" (LT)
 D = 01°-59'-46.9"
 L = 1,928.67'
 T = 1,002.34'
 R = 2,870.00'
 SE = 0.07

PLAN ALONG -Y1B-
(PILES AND COLUMNS NOT SHOWN FOR CLARITY)

PROJECT NO. U-2579AB
 FORSYTH COUNTY
 STATION: 22+26.35 -Y1B-
 = 703+89.11 -L-
 SHEET 1 OF 4 BRIDGE NO. 330722



RS&H
 RS&H Architects-Engineers-Planners, Inc.
 8521 Six Forks Road, Suite 400
 919-926-4100 FAX 919-846-9080
 www.rsandh.com
 North Carolina License No. 50737-5403-C-02

STATE OF NORTH CAROLINA
 DEPARTMENT OF TRANSPORTATION
 RALEIGH

GENERAL DRAWING
 FOR BRIDGE ON SR 2632
 OVER WINSTON-SALEM
 NORTHERN BELTWAY BETWEEN
 SR 2667 AND SR 2659

DRAWN BY : TRM DATE : 11/2019
 CHECKED BY : MAL DATE : 11/2019
 DESIGN ENGINEER OF RECORD: MAL DATE : 11/2019

DOCUMENT NOT CONSIDERED
 FINAL UNLESS ALL
 SIGNATURES COMPLETED

REVISIONS						SHEET NO.
NO.	BY:	DATE:	NO.	BY:	DATE:	S1-1
1			3			TOTAL SHEETS
2			4			47