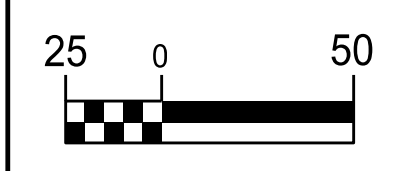


5/14/2023

THE ESTIMATED QUANTITY OF D.I. WATER PIPE FITTINGS ON THIS PLAN SHEET IS 1,100 POUNDS. THE ACTUAL QUANTITY AND TYPE OF FITTINGS WILL VARY BASED ON FIELD CONDITIONS.

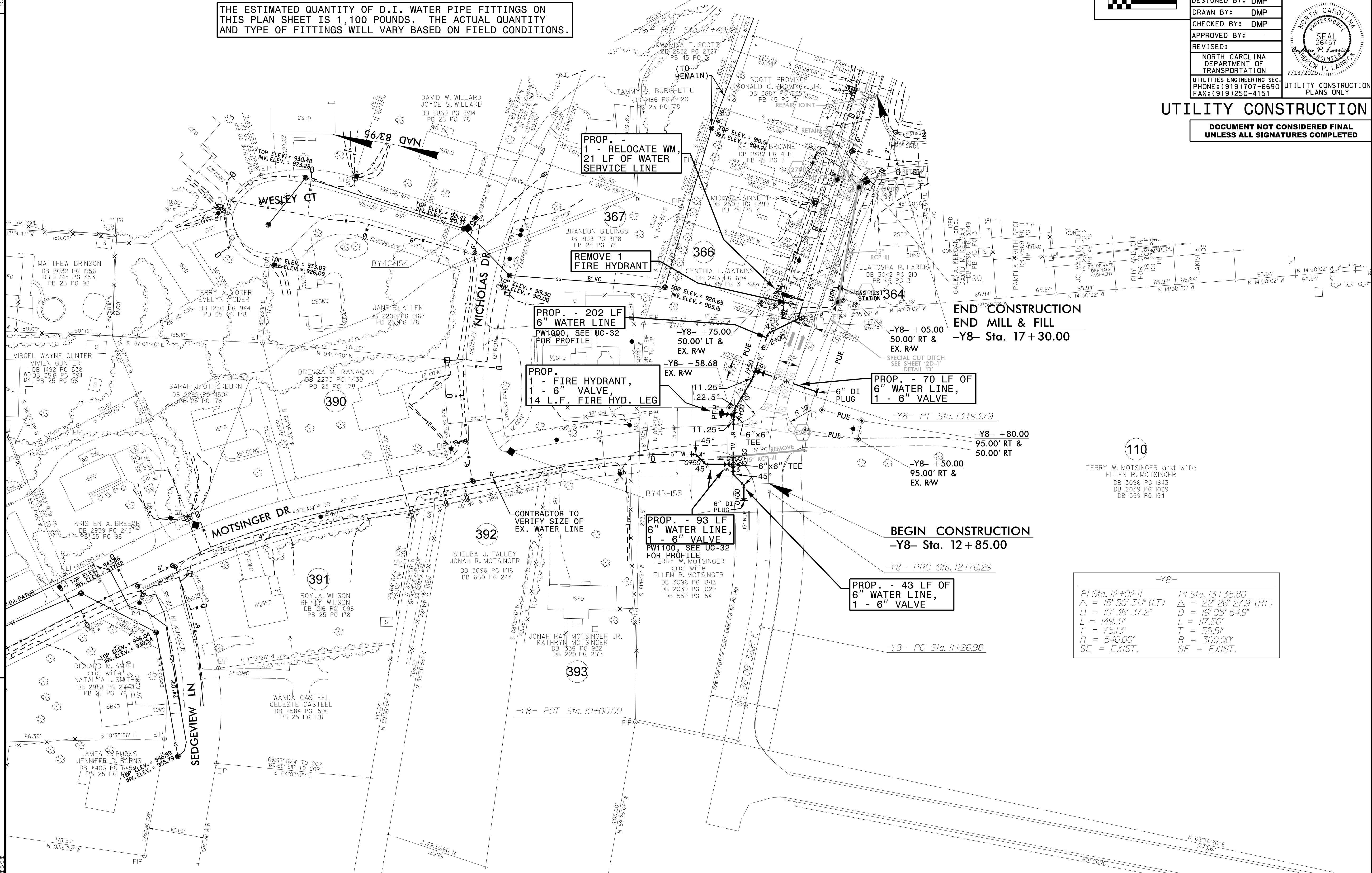


PROJECT REFERENCE NO.	SHEET NO.
U-2579AB	UC-20
DESIGNED BY: DMP	
DRAWN BY: DMP	
CHECKED BY: DMP	
APPROVED BY:	
REVISED:	
NORTH CAROLINA DEPARTMENT OF TRANSPORTATION	7/13/2023
UTILITIES ENGINEERING SEC. PHONE: (919) 707-6690 FAX: (919) 250-4151	UTILITY CONSTRUCTION PLANS ONLY

UTILITY CONSTRUCTION

DOCUMENT NOT CONSIDERED FINAL UNLESS ALL SIGNATURES COMPLETED

REVISIONS



-Y8-

PI Sta. 12+02.11	PI Sta. 13+35.80
Δ = 15' 50" 31.1" (LT)	Δ = 22' 26" 27.9" (RT)
D = 10' 36" 37.2"	D = 19' 05" 54.9"
L = 149.31'	L = 117.50'
T = 75.13'	T = 59.51'
R = 540.00'	R = 300.00'
SE = EXIST.	SE = EXIST.