

PROJECT REFERENCE NO.	SHEET NO.
U-2579AB	UC-19
DESIGNED BY: DMP	
DRAWN BY: DMP	
CHECKED BY: DMP	
APPROVED BY:	
REVISED:	
NORTH CAROLINA DEPARTMENT OF TRANSPORTATION	7/13/2025
UTILITIES ENGINEERING SEC. PHONE: (919) 707-6690 FAX: (919) 250-4151	UTILITY CONSTRUCTION PLANS ONLY

### UTILITY CONSTRUCTION

**DOCUMENT NOT CONSIDERED FINAL UNLESS ALL SIGNATURES COMPLETED**

-Y5B-			
PI Sta. 12+85.91 Δ = 27° 30' 01.6" (RT) D = 19' 05' 54.9" L = 143.99' T = 73.41' R = 300.00'	PI Sta. 16+34.35 Δ = 20° 46' 49.2" (RT) D = 7' 09' 43.1" L = 290.15' T = 146.69' R = 800.00' SE = 0.03	PI Sta. 21+40.17 Δ = 19° 49' 48.4" (LT) D = 7' 09' 43.1" L = 276.88' T = 139.84' R = 800.00' SE = 0.03	PI Sta. 24+70.15 Δ = 6° 54' 56.0" (LT) D = 2' 39' 31.5" L = 260.11' T = 130.21' R = 2,155.00'

THE ESTIMATED QUANTITY OF D.I. WATER PIPE FITTINGS ON THIS PLAN SHEET IS 450 POUNDS. THE ACTUAL QUANTITY AND TYPE OF FITTINGS WILL VARY BASED ON FIELD CONDITIONS.

A TOTAL OF 4 WATER METERS ARE SHOWN TO BE REMOVED ON THIS SHEET.

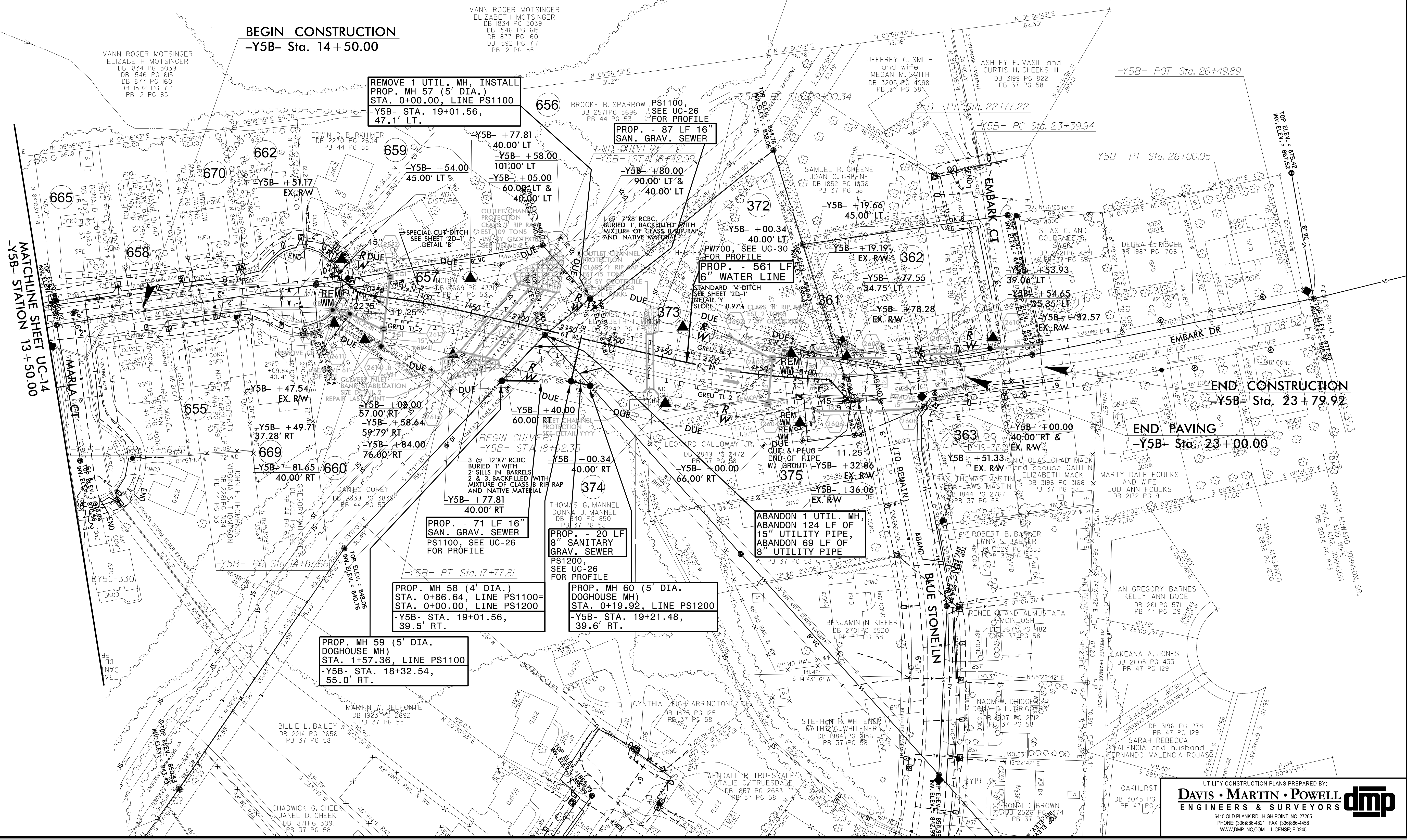
**BEGIN CONSTRUCTION**  
-Y5B- Sta. 14+50.00

-Y5B- POT Sta. 26+49.89

MATCHLINE SHEET UC-14  
-Y5B- STATION 13+50.00

**END CONSTRUCTION**  
-Y5B- Sta. 23+79.92

**END PAVING**  
-Y5B- Sta. 23+00.00



REVISIONS