

PROJECT REFERENCE NO.	SHEET NO.
U-2579AB	UC-17
DESIGNED BY: DMP	
DRAWN BY: DMP	
CHECKED BY: DMP	
APPROVED BY:	
REVISED:	
NORTH CAROLINA DEPARTMENT OF TRANSPORTATION UTILITIES ENGINEERING SEC. PHONE: (919) 707-6690 FAX: (919) 250-4151	
UTILITY CONSTRUCTION PLANS ONLY	

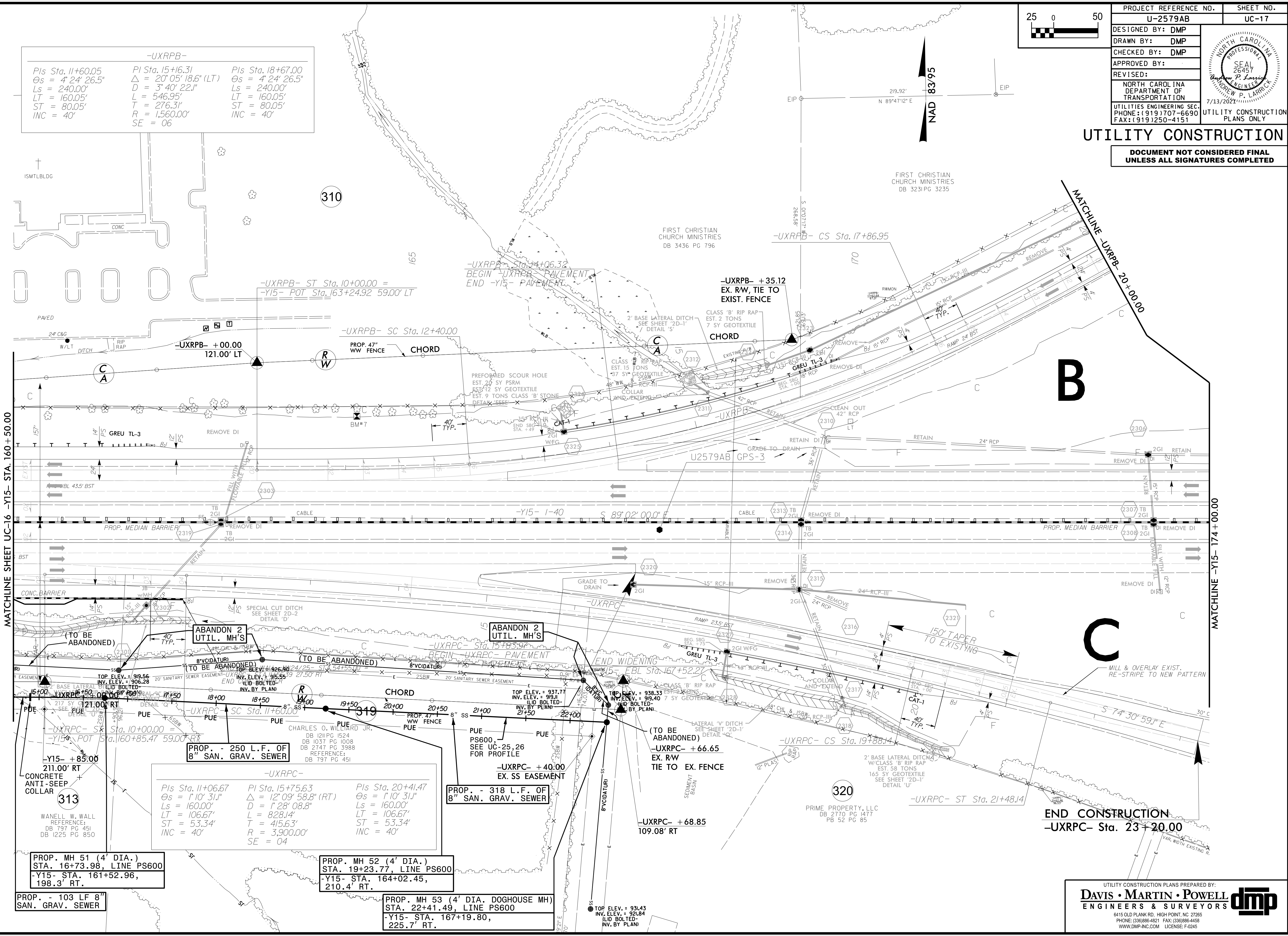
UTILITY CONSTRUCTION
 DOCUMENT NOT CONSIDERED FINAL
 UNLESS ALL SIGNATURES COMPLETED

-UXRPB-

Pls Sta. 11+60.05	Pls Sta. 15+16.31	Pls Sta. 18+67.00
$\Delta s = 4' 24' 26.5"$	$\Delta = 20' 05' 18.6" (LT)$	$\Delta s = 4' 24' 26.5"$
$Ls = 240.00'$	$D = 3' 40' 22.1"$	$Ls = 240.00'$
$LT = 160.05'$	$L = 546.95'$	$LT = 160.05'$
$ST = 80.05'$	$T = 276.31'$	$ST = 80.05'$
$INC = 40'$	$R = 1,560.00'$	$INC = 40'$
	$SE = 06'$	

-UXRPC-

Pls Sta. 11+06.67	Pls Sta. 15+75.63	Pls Sta. 20+41.47
$\Delta s = 1' 10' 31.1"$	$\Delta = 12' 09' 58.8" (RT)$	$\Delta s = 1' 10' 31.1"$
$Ls = 160.00'$	$D = 1' 28' 08.8"$	$Ls = 160.00'$
$LT = 106.67'$	$L = 828.14'$	$LT = 106.67'$
$ST = 53.34'$	$T = 415.63'$	$ST = 53.34'$
$INC = 40'$	$R = 3,900.00'$	$INC = 40'$
	$SE = 04'$	



REVISIONS

5/14/2021
 1
 2
 3
 4
 5
 6
 7
 8
 9
 10
 11
 12
 13
 14
 15
 16
 17
 18
 19
 20
 21
 22
 23
 24
 25
 26
 27
 28
 29
 30
 31
 32
 33
 34
 35
 36
 37
 38
 39
 40
 41
 42
 43
 44
 45
 46
 47
 48
 49
 50
 51
 52
 53
 54
 55
 56
 57
 58
 59
 60
 61
 62
 63
 64
 65
 66
 67
 68
 69
 70
 71
 72
 73
 74
 75
 76
 77
 78
 79
 80
 81
 82
 83
 84
 85
 86
 87
 88
 89
 90
 91
 92
 93
 94
 95
 96
 97
 98
 99
 100