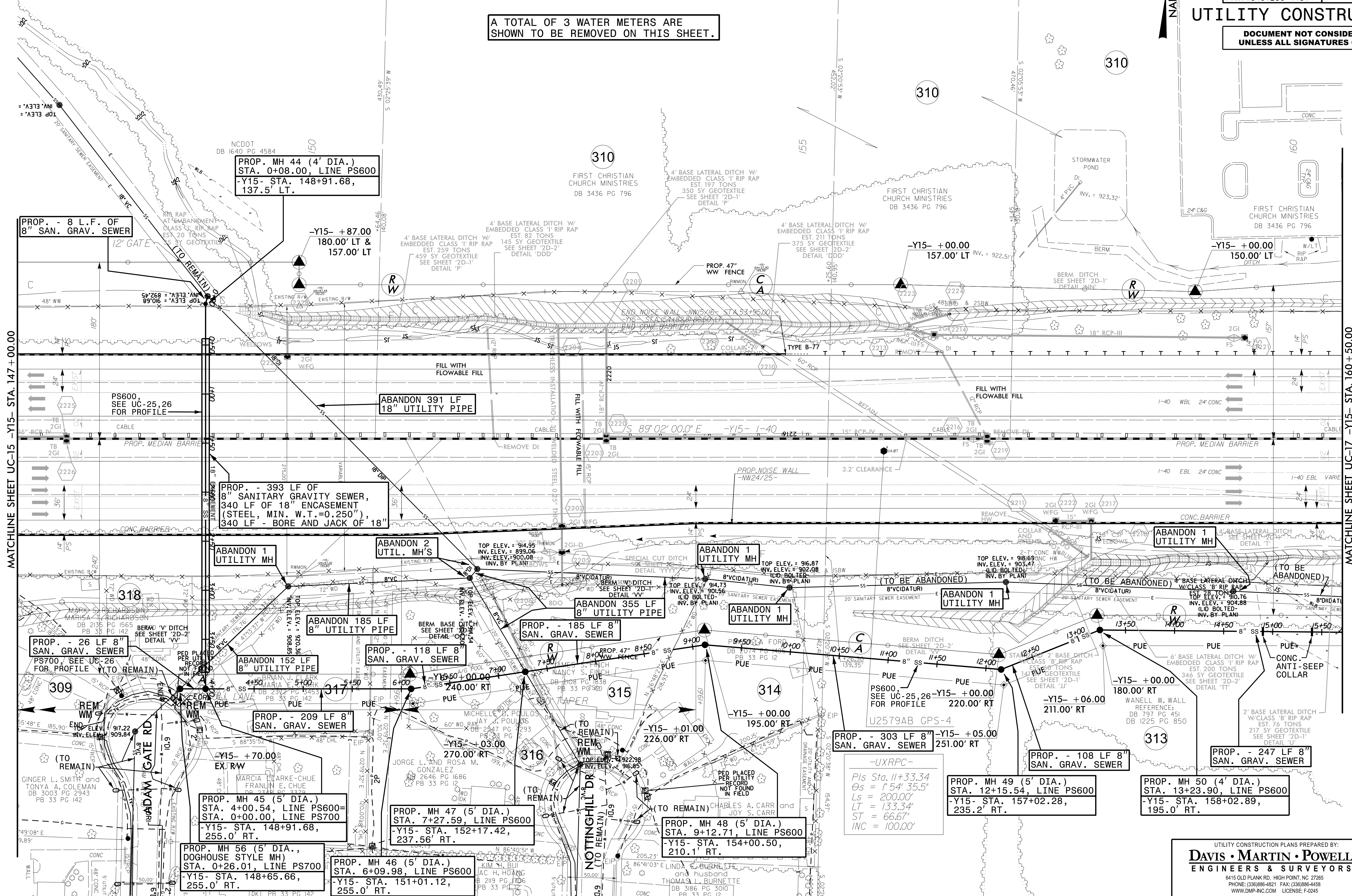


PROJECT REFERENCE NO.	U-2579AB	SHEET NO.	UC-16
DESIGNED BY:	DMP		
DRAWN BY:	DMP		
CHECKED BY:	DMP		
APPROVED BY:	DMP		
REVISED:			
NORTH CAROLINA DEPARTMENT OF TRANSPORTATION		UTILITY CONSTRUCTION PLANS ONLY	
UTILITIES ENGINEERING SEC. PHONE: (919) 707-6690 FAX: (919) 250-4151		7/13/2021	

UTILITY CONSTRUCTION
DOCUMENT NOT CONSIDERED FINAL UNLESS ALL SIGNATURES COMPLETED

A TOTAL OF 3 WATER METERS ARE SHOWN TO BE REMOVED ON THIS SHEET.



PROP. MH 44 (4' DIA.)
STA. 0+08.00, LINE PS600
-Y15- STA. 148+91.68,
137.5' LT.

PROP. - 8 L.F. OF
8" SAN. GRAV. SEWER

-Y15- +87.00
180.00' LT &
157.00' LT

PROP. - 393 LF OF
8" SANITARY GRAVITY SEWER,
340 LF OF 18" ENCASEMENT
(STEEL, MIN. W.T.=0.250"),
340 LF - BORE AND JACK OF 18"

ABANDON 391 LF
18" UTILITY PIPE

PROP. - 26 LF 8"
SAN. GRAV. SEWER
PS700, SEE UC-26
FOR PROFILE (TO REMAIN)

ABANDON 1
UTILITY MH

ABANDON 2
UTIL. MH'S

ABANDON 1
UTILITY MH

ABANDON 1
UTILITY MH

ABANDON 1
UTILITY MH

PROP. - 118 LF 8"
SAN. GRAV. SEWER

ABANDON 185 LF
8" UTILITY PIPE

ABANDON 355 LF
8" UTILITY PIPE

ABANDON 1
UTILITY MH

ABANDON 1
UTILITY MH

ABANDON 1
UTILITY MH

PROP. - 209 LF 8"
SAN. GRAV. SEWER

ABANDON 152 LF
8" UTILITY PIPE

PROP. MH 45 (5' DIA.)
STA. 4+00.54, LINE PS600=
STA. 0+00.00, LINE PS700
-Y15- STA. 148+91.68,
255.0' RT.

PROP. MH 47 (5' DIA.)
STA. 7+27.59, LINE PS600
-Y15- STA. 152+17.42,
237.56' RT.

PROP. MH 48 (5' DIA.)
STA. 9+12.71, LINE PS600
-Y15- STA. 154+00.50,
210.1' RT.

PROP. MH 49 (5' DIA.)
STA. 12+15.54, LINE PS600
-Y15- STA. 157+02.28,
235.2' RT.

PROP. MH 56 (5' DIA.,
DOGHOUSE STYLE MH)
STA. 0+26.01, LINE PS700
-Y15- STA. 148+65.66,
255.0' RT.

PROP. MH 46 (5' DIA.)
STA. 6+09.98, LINE PS600
-Y15- STA. 151+01.12,
255.0' RT.

PROP. MH 47 (5' DIA.)
STA. 7+27.59, LINE PS600
-Y15- STA. 152+17.42,
237.56' RT.

PROP. MH 48 (5' DIA.)
STA. 9+12.71, LINE PS600
-Y15- STA. 154+00.50,
210.1' RT.

PROP. MH 49 (5' DIA.)
STA. 12+15.54, LINE PS600
-Y15- STA. 157+02.28,
235.2' RT.

PROP. MH 50 (4' DIA.)
STA. 13+23.90, LINE PS600
-Y15- STA. 158+02.89,
195.0' RT.

PROP. - 303 LF 8"
SAN. GRAV. SEWER
251.00' RT

-UXRPC-
Pls Sta. 11+33.34
θs = 1°54'35.5"
Ls = 200.00'
LT = 133.34'
ST = 66.67'
INC = 100.00'

REVISIONS

MATCHLINE SHEET UC-15 -Y15- STA. 147+00.00

MATCHLINE SHEET UC-17 -Y15- STA. 160+50.00