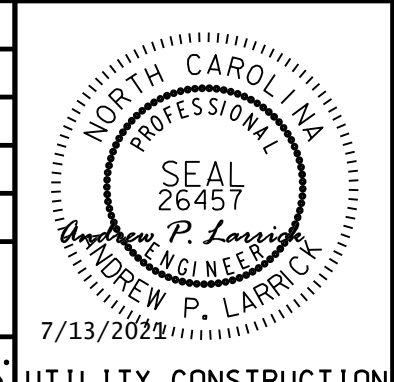
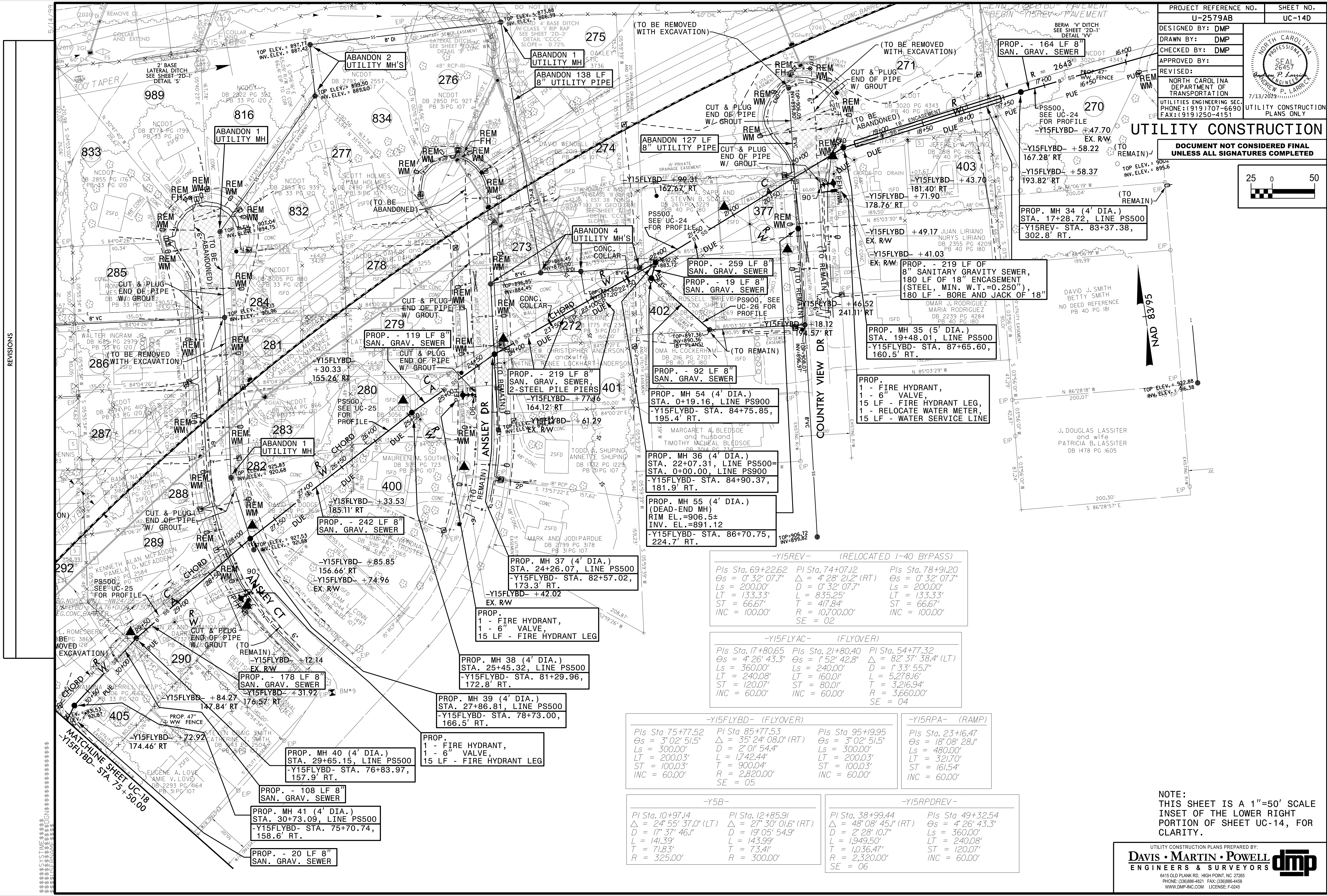
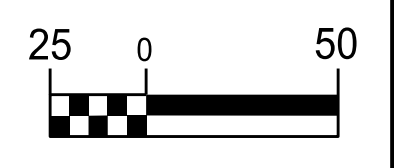


PROJECT REFERENCE NO.	U-2579AB
SHEET NO.	UC-14D
DESIGNED BY:	DMP
DRAWN BY:	DMP
CHECKED BY:	DMP
APPROVED BY:	
REVISED:	
NORTH CAROLINA DEPARTMENT OF TRANSPORTATION	
UTILITIES ENGINEERING SEC. PHONE: (919) 707-6690 FAX: (919) 250-4151	
UTILITY CONSTRUCTION PLANS ONLY	



UTILITY CONSTRUCTION

DOCUMENT NOT CONSIDERED FINAL UNLESS ALL SIGNATURES COMPLETED



REVISIONS

-Y15REV- (RELOCATED I-40 BYPASS)

Pls Sta. 69+22.62 Os = 0' 32' 07.7" Ls = 200.00' LT = 133.33' ST = 66.67' INC = 100.00'	PI Sta. 74+07.12 Δ = 4' 28' 21.2" (RT) D = 0' 32' 07.7" L = 835.25' T = 417.84' R = 10,700.00' SE = 02	Pls Sta. 78+91.20 Os = 0' 32' 07.7" Ls = 200.00' LT = 133.33' ST = 66.67' INC = 100.00'
--	--	--

-Y15FLYAC- (FLYOVER)

Pls Sta. 17+80.65 Os = 4' 26' 43.3" Ls = 360.00' LT = 240.08' ST = 120.07' INC = 60.00'	PI Sta. 21+80.40 Δ = 1' 52' 42.8" D = 2' 01' 54.4" L = 1742.44' T = 900.04' R = 2,820.00' SE = 05	PI Sta. 54+77.32 Os = 82' 37' 38.4" (LT) D = 1' 33' 55.7" L = 5,278.16' T = 3,216.94' R = 3,660.00' SE = 04
--	---	---

-Y15FLYBD- (FLYOVER)

Pls Sta. 75+77.52 Os = 3' 02' 51.5" Ls = 300.00' LT = 200.03' ST = 100.03' INC = 60.00'	PI Sta. 85+77.53 Δ = 35' 24' 08.0" (RT) D = 19' 05' 54.9" L = 143.99' T = 73.41' R = 300.00'	Pls Sta. 95+19.95 Os = 3' 02' 51.5" Ls = 300.00' LT = 200.03' ST = 100.03' INC = 60.00'
--	---	--

-Y15RPA- (RAMP)

Pls Sta. 23+16.47 Os = 18' 08' 28.1" Ls = 480.00' LT = 321.70' ST = 161.54' INC = 60.00'

-Y5B-

PI Sta. 10+97.14 Δ = 24' 55' 37.0" (LT) D = 17' 37' 46.1" L = 141.39' T = 71.83' R = 325.00'	PI Sta. 12+85.91 Δ = 27' 30' 01.6" (RT) D = 19' 05' 54.9" L = 143.99' T = 73.41' R = 300.00'
---	---

-Y15RPDREV-

Pls Sta. 38+99.44 Δ = 48' 08' 45.1" (RT) D = 2' 28' 10.7" L = 1,949.50' T = 1,036.47' R = 2,320.00' SE = 06	Pls Sta. 49+32.54 Os = 4' 26' 43.3" Ls = 360.00' LT = 240.08' ST = 120.07' INC = 60.00'
---	--

NOTE: THIS SHEET IS A 1"=50' SCALE INSET OF THE LOWER RIGHT PORTION OF SHEET UC-14, FOR CLARITY.