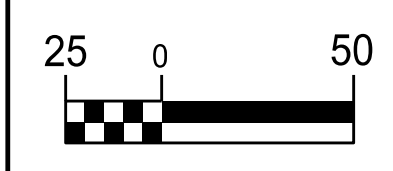


5/14/2022

THE ESTIMATED QUANTITY OF D.I. WATER PIPE FITTINGS ON THIS PLAN SHEET IS 1,280 POUNDS. THE ACTUAL QUANTITY AND TYPE OF FITTINGS WILL VARY BASED ON FIELD CONDITIONS.

A TOTAL OF 1 WATER METER IS SHOWN TO BE REMOVED ON THIS SHEET.

A TOTAL OF 1 FIRE HYDRANT IS SHOWN TO BE REMOVED ON THIS SHEET.



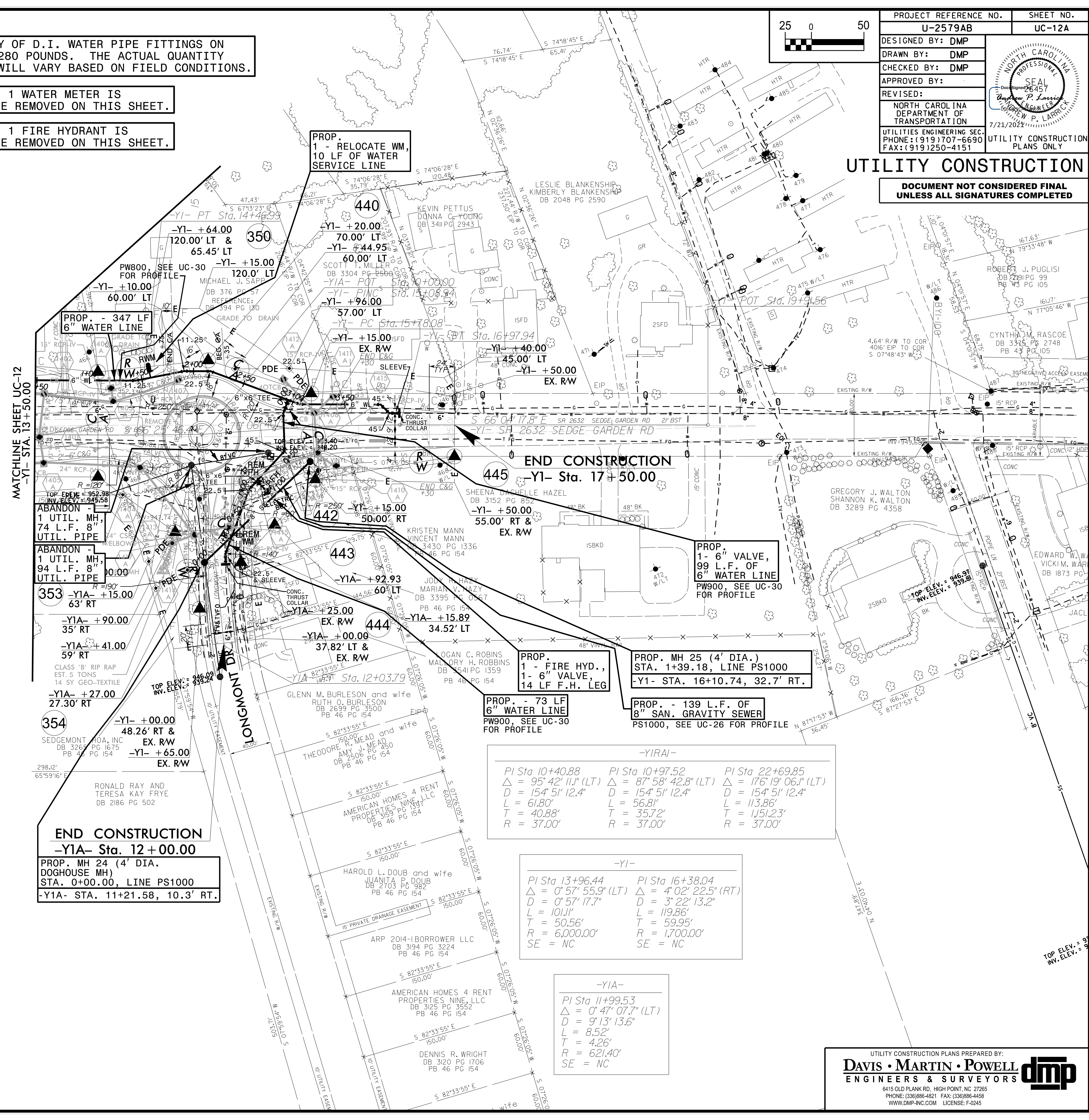
PROJECT REFERENCE NO.	SHEET NO.
U-2579AB	UC-12A
DESIGNED BY: DMP	
DRAWN BY: DMP	
CHECKED BY: DMP	
APPROVED BY:	
REVISED:	
NORTH CAROLINA DEPARTMENT OF TRANSPORTATION	
UTILITIES ENGINEERING SEC. PHONE: (919) 707-6690 FAX: (919) 250-4151	
UTILITY CONSTRUCTION PLANS ONLY	

UTILITY CONSTRUCTION

DOCUMENT NOT CONSIDERED FINAL UNLESS ALL SIGNATURES COMPLETED

REVISIONS

MATCHLINE SHEET UC-12
-Y1- STA. 13 + 50.00



END CONSTRUCTION

-Y1A- Sta. 12 + 00.00

PROP. MH 24 (4' DIA. DOGHOUSE MH)
STA. 0+00.00, LINE PS1000
-Y1A- STA. 11+21.58, 10.3' RT.

-Y1RAI-		
PI Sta 10+40.88 Δ = 95° 42' 11.1" (LT) D = 154' 51' 12.4" L = 61.80' T = 40.88' R = 37.00'	PI Sta 10+97.52 Δ = 87° 58' 42.8" (LT) D = 154' 51' 12.4" L = 56.81' T = 35.72' R = 37.00'	PI Sta 22+69.85 Δ = 176° 19' 06.1" (LT) D = 154' 51' 12.4" L = 113.86' T = 1,151.23' R = 37.00'

-Y1-	
PI Sta 13+96.44 Δ = 0° 57' 55.9" (LT) D = 0° 57' 17.7" L = 101.11' T = 50.56' R = 6,000.00' SE = NC	PI Sta 16+38.04 Δ = 4° 02' 22.5" (RT) D = 3° 22' 13.2" L = 119.86' T = 59.95' R = 1,700.00' SE = NC

-Y1A-
PI Sta 11+99.53 Δ = 0° 47' 07.7" (LT) D = 9° 13' 13.6" L = 8.52' T = 4.26' R = 621.40' SE = NC