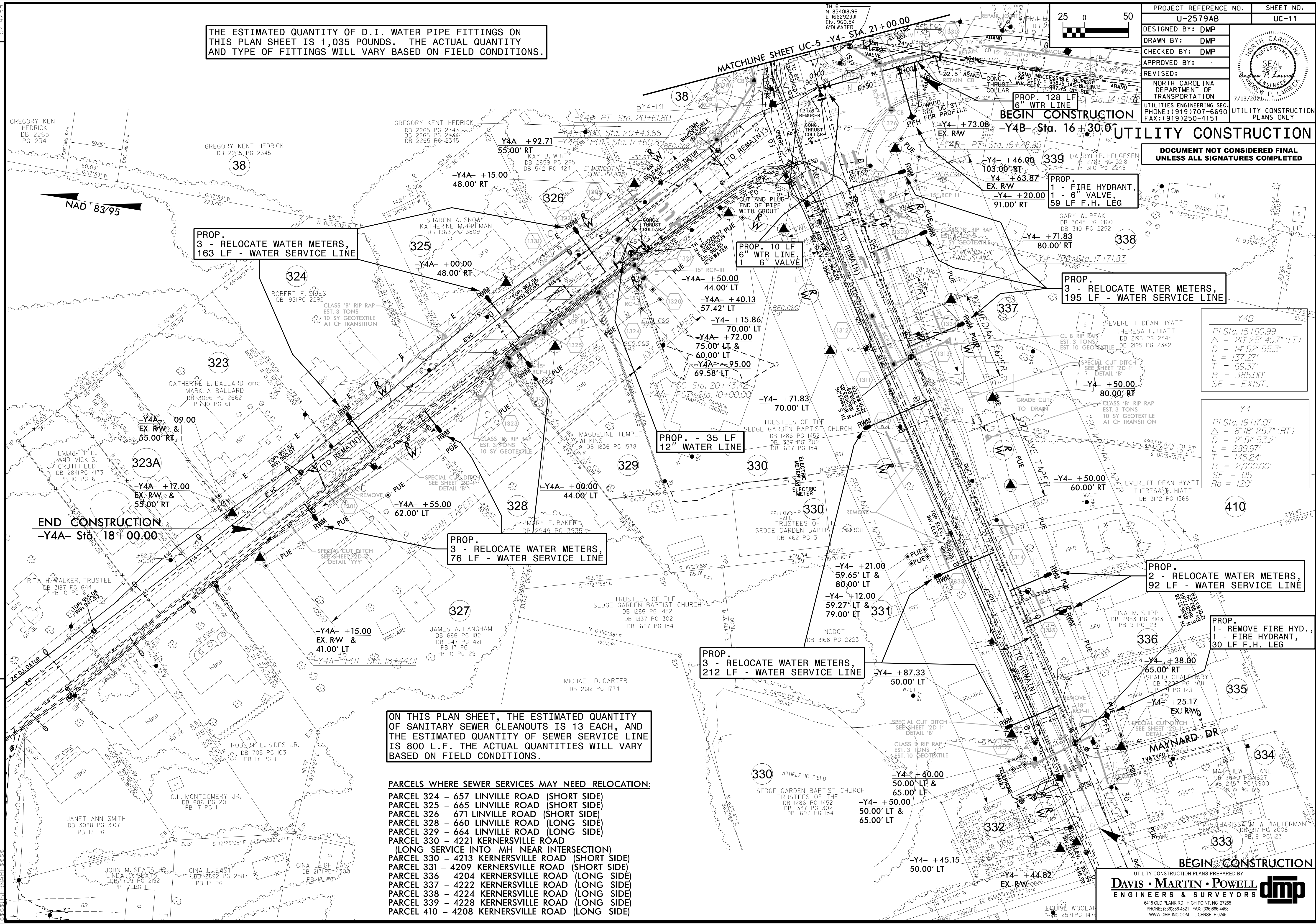


THE ESTIMATED QUANTITY OF D.I. WATER PIPE FITTINGS ON THIS PLAN SHEET IS 1,035 POUNDS. THE ACTUAL QUANTITY AND TYPE OF FITTINGS WILL VARY BASED ON FIELD CONDITIONS.

PROJECT REFERENCE NO.	U-2579AB
SHEET NO.	UC-11
DESIGNED BY:	DMP
DRAWN BY:	DMP
CHECKED BY:	DMP
APPROVED BY:	
REVISED:	
NORTH CAROLINA PROFESSIONAL ENGINEER SEAL 26457 Andrew P. Larrick	
NORTH CAROLINA DEPARTMENT OF TRANSPORTATION	
UTILITIES ENGINEERING SEC. PHONE: (919) 707-6690 FAX: (919) 250-4151	UTILITY CONSTRUCTION PLANS ONLY

DOCUMENT NOT CONSIDERED FINAL UNLESS ALL SIGNATURES COMPLETED



-Y4B-
 PI Sta. 15+60.99
 $\Delta = 20' 25" 40.7" (LT)$
 $D = 14' 52" 55.3"$
 $L = 137.27'$
 $T = 69.37'$
 $R = 385.00'$
 $SE = EXIST.$

-Y4-
 PI Sta. 19+17.07
 $\Delta = 8' 18" 25.7" (RT)$
 $D = 2' 51" 53.2"$
 $L = 289.97'$
 $T = 145.24'$
 $R = 2,000.00'$
 $Ro = 120'$

ON THIS PLAN SHEET, THE ESTIMATED QUANTITY OF SANITARY SEWER CLEANOUTS IS 13 EACH, AND THE ESTIMATED QUANTITY OF SEWER SERVICE LINE IS 800 L.F. THE ACTUAL QUANTITIES WILL VARY BASED ON FIELD CONDITIONS.

- PARCELS WHERE SEWER SERVICES MAY NEED RELOCATION:
- PARCEL 324 - 657 LINVILLE ROAD (SHORT SIDE)
 - PARCEL 325 - 665 LINVILLE ROAD (SHORT SIDE)
 - PARCEL 326 - 671 LINVILLE ROAD (SHORT SIDE)
 - PARCEL 328 - 660 LINVILLE ROAD (LONG SIDE)
 - PARCEL 329 - 664 LINVILLE ROAD (LONG SIDE)
 - PARCEL 330 - 4221 KERNERSVILLE ROAD (LONG SERVICE INTO MH NEAR INTERSECTION)
 - PARCEL 330 - 4213 KERNERSVILLE ROAD (SHORT SIDE)
 - PARCEL 331 - 4209 KERNERSVILLE ROAD (SHORT SIDE)
 - PARCEL 336 - 4204 KERNERSVILLE ROAD (LONG SIDE)
 - PARCEL 337 - 4222 KERNERSVILLE ROAD (LONG SIDE)
 - PARCEL 338 - 4224 KERNERSVILLE ROAD (LONG SIDE)
 - PARCEL 339 - 4228 KERNERSVILLE ROAD (LONG SIDE)
 - PARCEL 410 - 4208 KERNERSVILLE ROAD (LONG SIDE)

REVISIONS