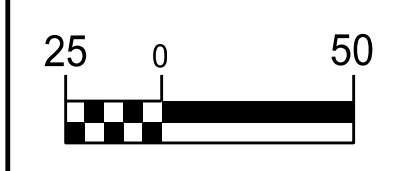


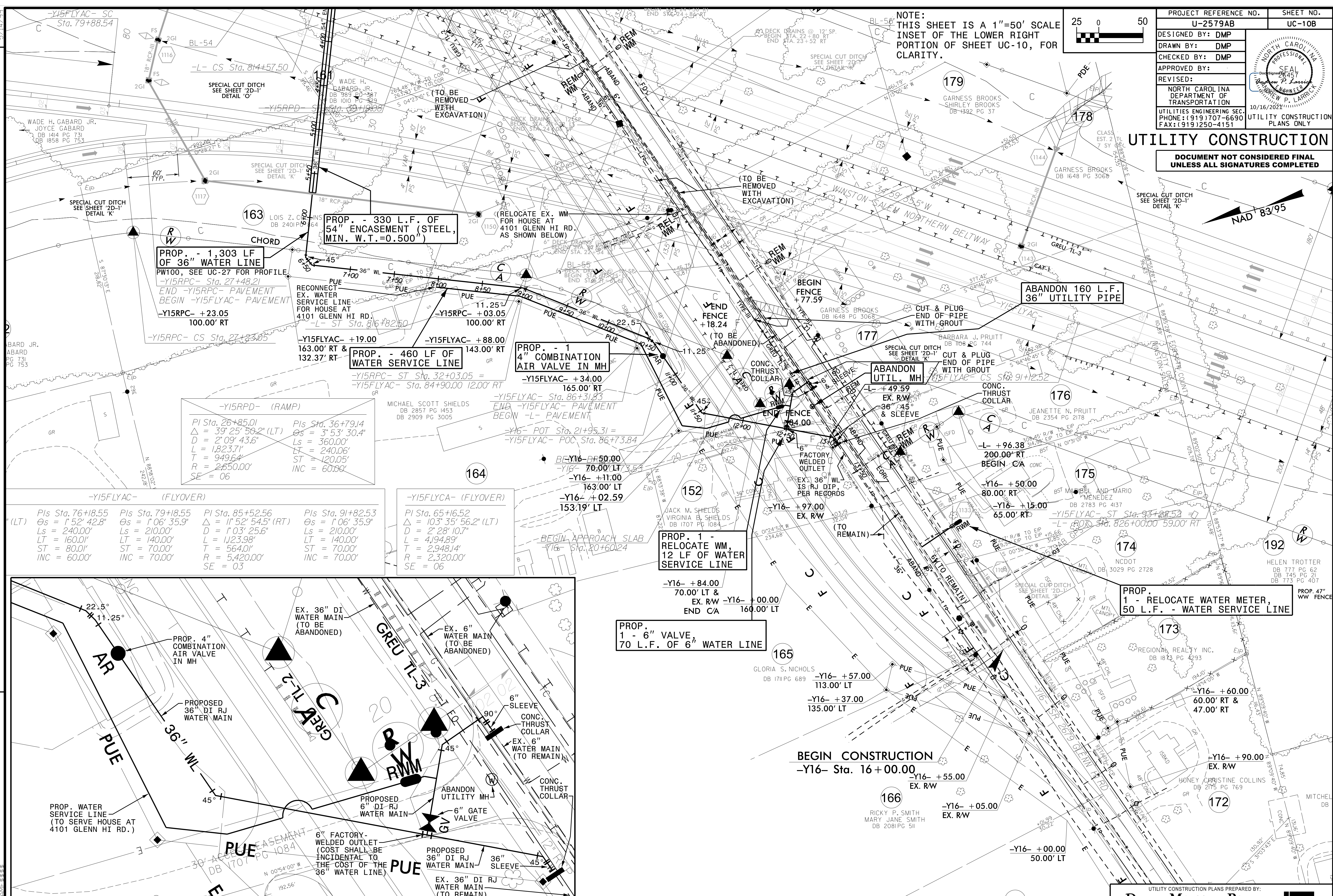
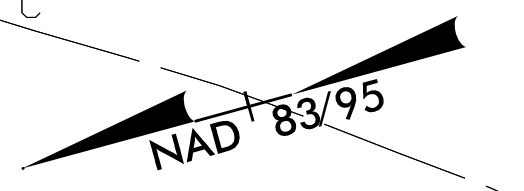
NOTE:
THIS SHEET IS A 1"=50' SCALE
INSET OF THE LOWER RIGHT
PORTION OF SHEET UC-10, FOR
CLARITY.



PROJECT REFERENCE NO.	U-2579AB	SHEET NO.	UC-10B
DESIGNED BY:	DMP		
DRAWN BY:	DMP		
CHECKED BY:	DMP		
APPROVED BY:			
REVISED:			
NORTH CAROLINA DEPARTMENT OF TRANSPORTATION		10/16/2024	
UTILITIES ENGINEERING SEC. PHONE: (919) 707-6690 FAX: (919) 250-4151		UTILITY CONSTRUCTION PLANS ONLY	

UTILITY CONSTRUCTION

DOCUMENT NOT CONSIDERED FINAL
UNLESS ALL SIGNATURES COMPLETED



-Y15RPD- (RAMP)

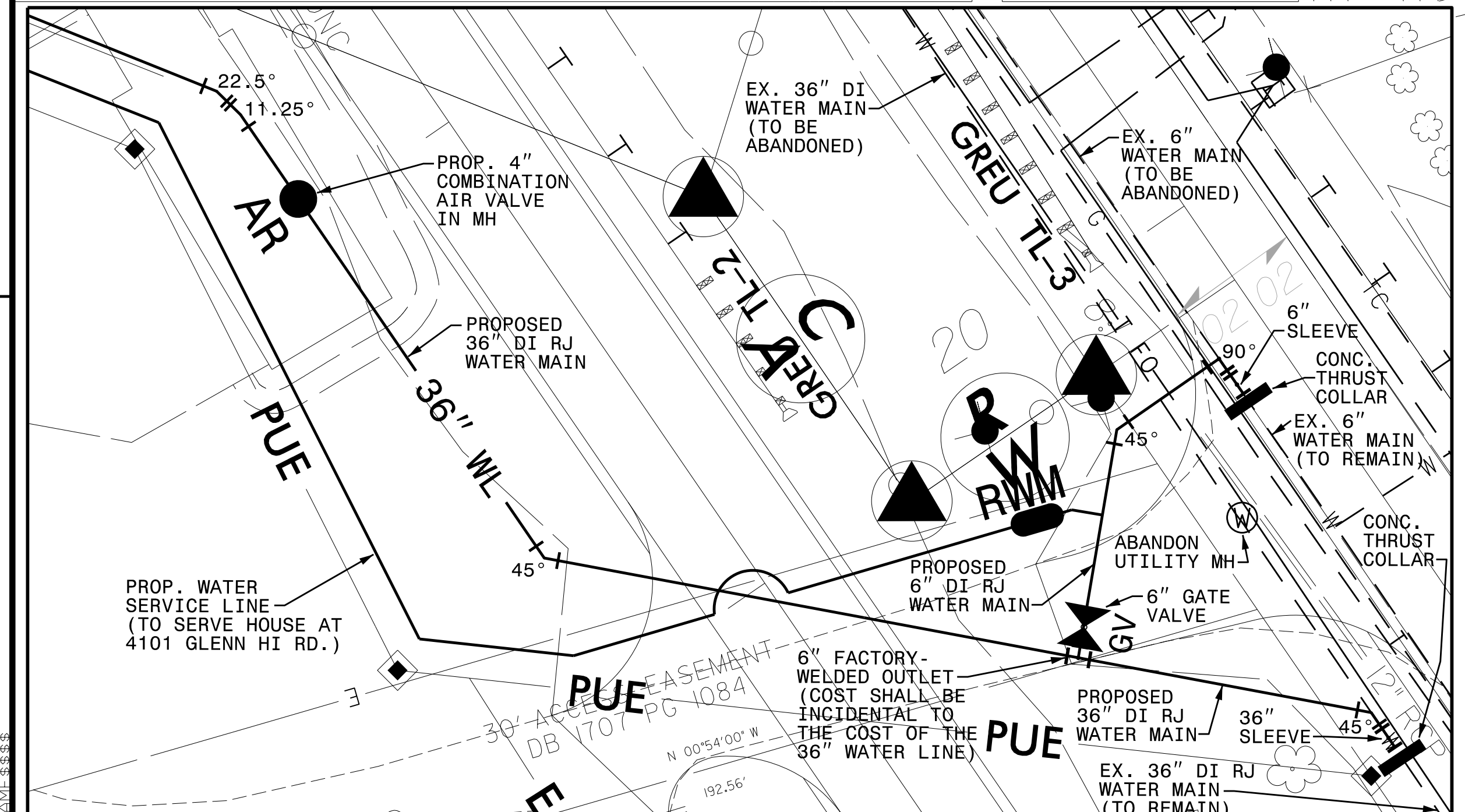
PI Sta. 26+85.01	PIs Sta. 36+79.14
$\Delta = 39^\circ 25' 59.2"$ (LT)	$\Delta = 3^\circ 53' 30.4"$
D = 2' 09" 43.6"	Ls = 360.00'
L = 1.82371'	LT = 240.06'
T = 949.64'	ST = 120.05'
R = 2,650.00'	INC = 60.00'
SE = 06	

-Y15FLYAC- (FLYOVER)

PIs Sta. 76+18.55	PIs Sta. 79+18.55	PI Sta. 85+52.56	PIs Sta. 91+82.53
$\Delta = 1^\circ 52' 42.8"$	$\Delta = 1^\circ 06' 35.9"$	$\Delta = 1^\circ 52' 54.5"$ (RT)	$\Delta = 1^\circ 06' 35.9"$
Ls = 240.00'	Ls = 210.00'	D = 1' 03" 25.6"	Ls = 210.00'
LT = 160.00'	LT = 140.00'	L = 1,123.98'	LT = 140.00'
ST = 80.00'	ST = 70.00'	T = 564.01'	ST = 70.00'
INC = 60.00'	INC = 70.00'	R = 5,420.00'	INC = 70.00'
		SE = 03	

-Y15FLYCA- (FLYOVER)

PI Sta. 65+16.52	$\Delta = 103^\circ 35' 56.2"$ (LT)
D = 2' 28" 10.7"	L = 4,194.89'
T = 2,948.14'	R = 2,320.00'
SE = 06	



INSET FOR WATER LINE TIE-INS AT
GLENN HI ROAD (-Y19- STA. 19+00, LEFT)
SCALE: 1"=20'