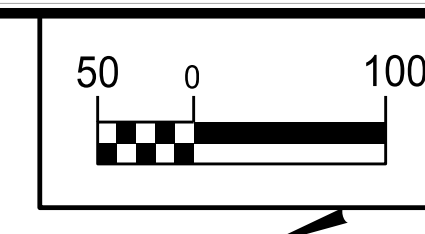


5/14/2019



PROJECT REFERENCE NO.	U-2579AB
SHEET NO.	UC-10
DESIGNED BY:	DMP
DRAWN BY:	DMP
CHECKED BY:	DMP
APPROVED BY:	
REVISED:	
NORTH CAROLINA DEPARTMENT OF TRANSPORTATION	
UTILITIES ENGINEERING SEC. PHONE: (919) 707-6690 FAX: (919) 250-4151	
UTILITY CONSTRUCTION PLANS ONLY	



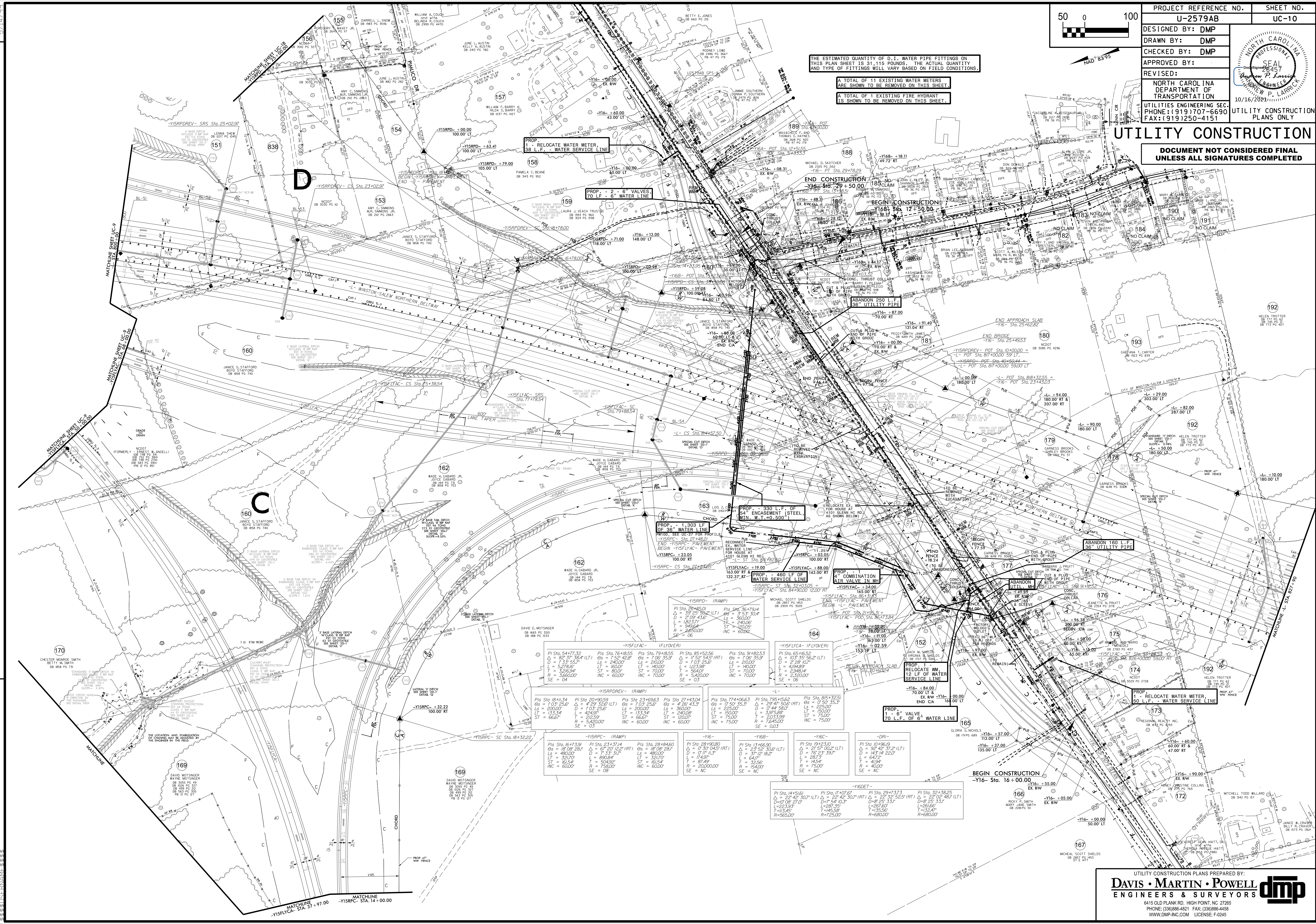
UTILITY CONSTRUCTION

DOCUMENT NOT CONSIDERED FINAL UNLESS ALL SIGNATURES COMPLETED

THE ESTIMATED QUANTITY OF D.I. WATER PIPE FITTINGS ON THIS PLAN SHEET IS 31,115 POUNDS. THE ACTUAL QUANTITY AND TYPE OF FITTINGS WILL VARY BASED ON FIELD CONDITIONS.

TOTAL OF 11 EXISTING WATER METERS ARE SHOWN TO BE REMOVED ON THIS SHEET.

TOTAL OF 1 EXISTING FIRE HYDRANT IS SHOWN TO BE REMOVED ON THIS SHEET.



REVISIONS

- 45
- 46
- 47
- 48
- 49
- 50
- 51
- 52
- 53
- 54
- 55
- 56
- 57
- 58
- 59
- 60
- 61
- 62
- 63
- 64
- 65
- 66
- 67
- 68
- 69
- 70
- 71
- 72
- 73
- 74
- 75
- 76
- 77
- 78
- 79
- 80
- 81
- 82
- 83
- 84
- 85
- 86
- 87
- 88
- 89
- 90
- 91
- 92
- 93
- 94
- 95
- 96
- 97
- 98
- 99
- 100

<p>-YISRPD- (RAMP)</p> <p>PI Sta. 28+80.00 Δ = 2° 37' 36.2" (LT) D = 37.23' (36.2' LT) Ls = 200.00' T = 3.26' (3.26' LT) R = 3660.00' SE = 04</p>	<p>-YISFLAC- (FLYOVER)</p> <p>PI Sta. 54+77.32 Δ = 82° 37' 38.2" (RT) D = 133' 25.5" Ls = 3278.82' T = 326.54' R = 3660.00' SE = 04</p>	<p>-YISRPD- (RAMP)</p> <p>PI Sta. 18+41.34 Δ = 1° 03' 25.6" D = 200.00' Ls = 192.92' T = 29.25' R = 3660.00' SE = 03</p>	<p>-YISRPD- (RAMP)</p> <p>PI Sta. 20+90.59 Δ = 1° 20' 32.6" (LT) D = 193' 25.6" Ls = 192.92' T = 29.25' R = 3660.00' SE = 03</p>	<p>-YISRPD- (RAMP)</p> <p>PI Sta. 23+09.63 Δ = 1° 03' 25.6" D = 200.00' Ls = 192.92' T = 29.25' R = 3660.00' SE = 03</p>	<p>-YISRPD- (RAMP)</p> <p>PI Sta. 27+43.04 Δ = 4° 26' 43.3" D = 200.00' Ls = 192.92' T = 29.25' R = 3660.00' SE = 03</p>	<p>-YISRPD- (RAMP)</p> <p>PI Sta. 79+85.55 Δ = 1° 52' 42.8" (RT) D = 173' 25.6" Ls = 192.92' T = 29.25' R = 3660.00' SE = 03</p>	<p>-YISRPD- (RAMP)</p> <p>PI Sta. 85+52.56 Δ = 1° 06' 35.9" (RT) D = 173' 25.6" Ls = 192.92' T = 29.25' R = 3660.00' SE = 03</p>	<p>-YISRPD- (RAMP)</p> <p>PI Sta. 91+82.53 Δ = 1° 06' 35.9" (RT) D = 173' 25.6" Ls = 192.92' T = 29.25' R = 3660.00' SE = 03</p>	<p>-YISFLAC- (FLYOVER)</p> <p>PI Sta. 65+46.52 Δ = 103° 35' 56.2" (LT) D = 228' 10.7" Ls = 429.67' T = 234.14' R = 2300.00' SE = 06</p>	<p>-YISFLAC- (FLYOVER)</p> <p>PI Sta. 75+51.62 Δ = 25° 47' 50.6" (RT) D = 173' 25.6" Ls = 192.92' T = 29.25' R = 3660.00' SE = 03</p>	<p>-YISFLAC- (FLYOVER)</p> <p>PI Sta. 85+32.55 Δ = 1° 50' 35.3" (RT) D = 173' 25.6" Ls = 192.92' T = 29.25' R = 3660.00' SE = 03</p>	<p>-YISFLAC- (FLYOVER)</p> <p>PI Sta. 134+66.90 Δ = 2° 52' 30.6" (LT) D = 37' 12' 18.2" Ls = 150.00' T = 14.54' R = 750.00' SE = NC</p>	<p>-YISFLAC- (FLYOVER)</p> <p>PI Sta. 19+23.00 Δ = 27° 57' 00.2" (LT) D = 173' 25.6" Ls = 192.92' T = 29.25' R = 3660.00' SE = NC</p>	<p>-YISFLAC- (FLYOVER)</p> <p>PI Sta. 10+96.09 Δ = 92° 42' 37.2" (LT) D = 173' 25.6" Ls = 192.92' T = 29.25' R = 3660.00' SE = NC</p>	<p>-YISFLAC- (FLYOVER)</p> <p>PI Sta. 14+51.61 Δ = 22° 42' 30.7" (LT) D = 173' 25.6" Ls = 192.92' T = 29.25' R = 3660.00' SE = NC</p>	<p>-YISFLAC- (FLYOVER)</p> <p>PI Sta. 29+73.73 Δ = 22° 42' 30.7" (LT) D = 173' 25.6" Ls = 192.92' T = 29.25' R = 3660.00' SE = NC</p>	<p>-YISFLAC- (FLYOVER)</p> <p>PI Sta. 32+38.25 Δ = 22° 42' 30.7" (LT) D = 173' 25.6" Ls = 192.92' T = 29.25' R = 3660.00' SE = NC</p>
--	--	---	---	---	---	---	---	---	--	--	---	--	--	--	--	--	--