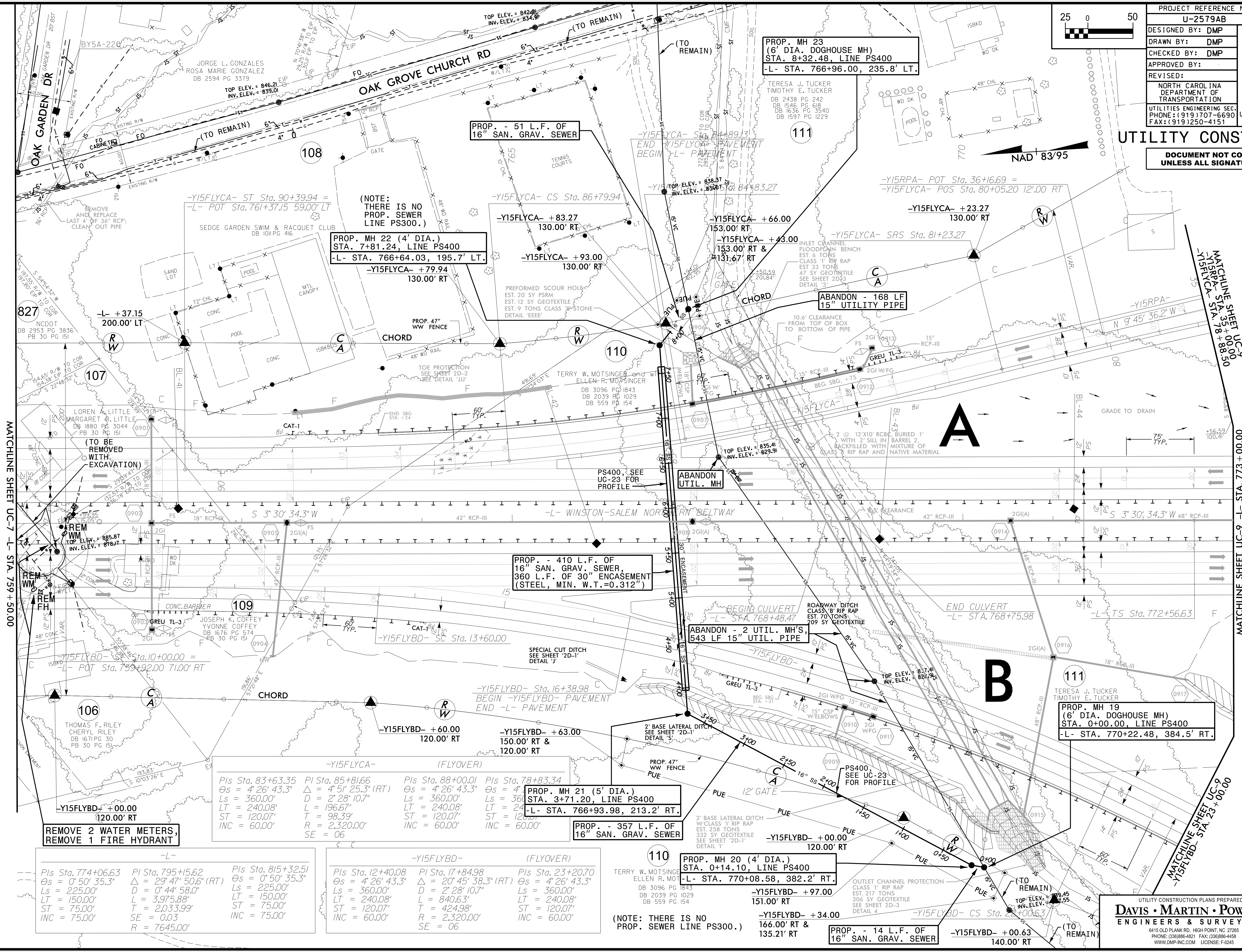


PROJECT REFERENCE NO.	SHEET NO.
U-2579AB	UC-8
DESIGNED BY: DMP	
DRAWN BY: DMP	
CHECKED BY: DMP	
APPROVED BY:	
REVISED:	
NORTH CAROLINA DEPARTMENT OF TRANSPORTATION	
UTILITIES ENGINEERING SEC. PHONE: (919) 707-6690 FAX: (919) 250-4151	UTILITY CONSTRUCTION PLANS ONLY

UTILITY CONSTRUCTION
DOCUMENT NOT CONSIDERED FINAL UNLESS ALL SIGNATURES COMPLETED



REMOVE 2 WATER METERS, REMOVE 1 FIRE HYDRANT

Station	PI	Δ	θs	Ls	LT	ST	INC
Sta. 774+06.63	795+15.62	29° 47' 50.6" (RT)	0° 50' 35.3"	225.00'	150.00'	75.00'	75.00'
				D = 0° 44' 58.0"	L = 3,975.88'	T = 2,033.99'	SE = 0.03
							R = 7645.00'

(FLYOVER)

Station	PI	Δ	θs	Ls	LT	ST	INC
Sta. 12+40.08	17+84.98	20° 45' 38.3" (RT)	4° 26' 43.3"	360.00'	240.08'	120.07'	60.00'
				D = 2° 28' 10.7"	L = 840.63'	T = 424.98'	SE = 0.6
							R = 2,320.00'

(FLYOVER)

Station	PI	Δ	θs	Ls	LT	ST	INC
Sta. 23+20.70	28+10.00	4° 26' 43.3" (RT)	0° 50' 35.3"	225.00'	150.00'	75.00'	75.00'
				D = 0° 44' 58.0"	L = 3,975.88'	T = 2,033.99'	SE = 0.03
							R = 7645.00'

(FLYOVER)

Station	PI	Δ	θs	Ls	LT	ST	INC
Sta. 83+63.35	85+81.66	4° 51' 25.3" (RT)	4° 26' 43.3"	360.00'	240.08'	120.07'	60.00'
				D = 2° 28' 10.7"	L = 196.67'	T = 98.39'	SE = 0.6
							R = 2,320.00'

(FLYOVER)

Station	PI	Δ	θs	Ls	LT	ST	INC
Sta. 88+00.01	88+00.01	4° 26' 43.3" (RT)	0° 50' 35.3"	225.00'	150.00'	75.00'	75.00'
				D = 2° 28' 10.7"	L = 840.63'	T = 424.98'	SE = 0.6
							R = 2,320.00'

(FLYOVER)

Station	PI	Δ	θs	Ls	LT	ST	INC
Sta. 78+83.34	78+83.34	4° 26' 43.3" (RT)	0° 50' 35.3"	225.00'	150.00'	75.00'	75.00'
				D = 2° 28' 10.7"	L = 840.63'	T = 424.98'	SE = 0.6
							R = 2,320.00'

(FLYOVER)

Station	PI	Δ	θs	Ls	LT	ST	INC
Sta. 10+00.00	10+00.00	4° 26' 43.3" (RT)	0° 50' 35.3"	225.00'	150.00'	75.00'	75.00'
				D = 2° 28' 10.7"	L = 840.63'	T = 424.98'	SE = 0.6
							R = 2,320.00'

(FLYOVER)

Station	PI	Δ	θs	Ls	LT	ST	INC
Sta. 16+38.98	16+38.98	4° 26' 43.3" (RT)	0° 50' 35.3"	225.00'	150.00'	75.00'	75.00'
				D = 2° 28' 10.7"	L = 840.63'	T = 424.98'	SE = 0.6
							R = 2,320.00'

(FLYOVER)

Station	PI	Δ	θs	Ls	LT	ST	INC
Sta. 13+60.00	13+60.00	4° 26' 43.3" (RT)	0° 50' 35.3"	225.00'	150.00'	75.00'	75.00'
				D = 2° 28' 10.7"	L = 840.63'	T = 424.98'	SE = 0.6
							R = 2,320.00'

(FLYOVER)

Station	PI	Δ	θs	Ls	LT	ST	INC
Sta. 13+60.00	13+60.00	4° 26' 43.3" (RT)	0° 50' 35.3"	225.00'	150.00'	75.00'	75.00'
				D = 2° 28' 10.7"	L = 840.63'	T = 424.98'	SE = 0.6
							R = 2,320.00'

(FLYOVER)

Station	PI	Δ	θs	Ls	LT	ST	INC
Sta. 79+92.00	79+92.00	4° 26' 43.3" (RT)	0° 50' 35.3"	225.00'	150.00'	75.00'	75.00'
				D = 2° 28' 10.7"	L = 840.63'	T = 424.98'	SE = 0.6
							R = 2,320.00'

(FLYOVER)

Station	PI	Δ	θs	Ls	LT	ST	INC
Sta. 10+00.00	10+00.00	4° 26' 43.3" (RT)	0° 50' 35.3"	225.00'	150.00'	75.00'	75.00'
				D = 2° 28' 10.7"	L = 840.63'	T = 424.98'	SE = 0.6
							R = 2,320.00'

(FLYOVER)

Station	PI	Δ	θs	Ls	LT	ST	INC
Sta. 10+00.00	10+00.00	4° 26' 43.3" (RT)	0° 50' 35.3"	225.00'	150.00'	75.00'	75.00'
				D = 2° 28' 10.7"	L = 840.63'	T = 424.98'	SE = 0.6
							R = 2,320.00'

(FLYOVER)

Station	PI	Δ	θs	Ls	LT	ST	INC
Sta. 10+00.00	10+00.00	4° 26' 43.3" (RT)	0° 50' 35.3"	225.00'	150.00'	75.00'	75.00'
				D = 2° 28' 10.7"	L = 840.63'	T = 424.98'	SE = 0.6
							R = 2,320.00'

(FLYOVER)

Station	PI	Δ	θs	Ls	LT	ST	INC
Sta. 76+64.03	76+64.03	4° 26' 43.3" (RT)	0° 50' 35.3"	225.00'	150.00'	75.00'	75.00'
				D = 2° 28' 10.7"	L = 840.63'	T = 424.98'	SE = 0.6
							R = 2,320.00'

(FLYOVER)

Station	PI	Δ	θs	Ls	LT	ST	INC
Sta. 86+79.94	86+79.94	4° 26' 43.3" (RT)	0° 50' 35.3"	225.00'	150.00'	75.00'	75.00'
				D = 2° 28' 10.7"	L = 840.63'	T = 424.98'	SE = 0.6
							R = 2,320.00'

(FLYOVER)

Station	PI	Δ	θs	Ls	LT	ST	INC
Sta. 86+79.94	86+79.94	4° 26' 43.3" (RT)	0° 50' 35.3"	225.00'	150.00'	75.00'	75.00'
				D = 2° 28' 10.7"	L = 840.63'	T = 424.98'	SE = 0.6
							R = 2,320.00'

(FLYOVER)

Station	PI	Δ	θs	Ls	LT	ST	INC
Sta. 86+79.94	86+79.94	4° 26' 43.3" (RT)	0° 50' 35.3"	225.00'	150.00'	75.00'	75.00'
				D = 2° 28' 10.7"	L = 840.63'	T = 424.98'	SE = 0.6
							R = 2,320.00'

(FLYOVER)

Station	PI	Δ	θs	Ls	LT	ST	INC
Sta. 90+39.94	90+39.94	4° 26' 43.3" (RT)	0° 50' 35.3"	225.00'	150.00'	75.00'	75.00'
				D = 2° 28' 10.7"	L = 840.63'	T = 424.98'	SE = 0.6
							R = 2,320.00'

(FLYOVER)

Station	PI	Δ	θs	Ls	LT	ST	INC
Sta. 90+39.94	90+39.94	4° 26' 43.3" (RT)	0° 50' 35.3"	225.00'	150.00'	75.00'	75.00'
				D = 2° 28' 10.7"	L = 840.63'	T = 424.98'	SE = 0.6
							R = 2,320.00'

(FLYOVER)

Station	PI	Δ	θs	Ls	LT	ST	INC
Sta. 90+39.94	90+39.94	4° 26' 43.3" (RT)	0° 50' 35.3"	225.00'	150.00'	75.00'	75.00'
				D = 2° 28' 10.7"	L = 840.63'	T = 424.98'	SE = 0.6
							R = 2,320.00'

(FLYOVER)

Station	PI	Δ	θs	Ls	LT	ST	INC
Sta. 90+39.94	90+39.94	4° 26' 43.3" (RT)	0° 50' 35.3"	225.00'	150.00'	75.00'	75.00'
				D = 2° 28' 10.7"	L = 840.63'	T = 424.98'	SE = 0.6
							R = 2,320.00'

(FLYOVER)

Station	PI	Δ	θs	Ls	LT	ST	INC
Sta. 76+64.03	76+64.03	4° 26' 43.3" (RT)	0° 50' 35.3"	225.00'	150.00'	75.00'	75.00'
				D = 2° 28' 10.7"	L = 840.63'	T = 424.98'	SE = 0.6
							R = 2,320.00'

(FLYOVER)

Station	PI	Δ	θs	Ls	LT	ST	INC
Sta. 76+64.03	76+64.03	4° 26' 43.3" (RT)	0° 50' 35.3"	225.00'	150.00'	75.00'	75.00'
				D = 2° 28' 10.7"	L = 840.63'	T = 424.98'	SE = 0.6
							R = 2,320.00'

(FLYOVER)

Station	PI	Δ	θs	Ls	LT	ST	INC
Sta. 76+64.03	76+64.03	4° 26' 43.3" (RT)	0° 50' 35.3"	225.00'	150.00'	75.00'	75.00'
				D = 2° 28' 10.7"	L = 840.63'	T = 424.98'	SE = 0.6
							R = 2,320.00'

(FLYOVER)

Station	PI	Δ	θs	Ls	LT	ST	INC
Sta. 76+64.03	76+64.03	4° 26' 43.3" (RT)	0° 50' 35.3"	225.00'	150.00'	75.00'	75.00'
				D = 2° 28' 10.7"	L = 840.63'	T = 424.98'	SE = 0.6
							R = 2,320.00'

(FLYOVER)

Station	PI	Δ	θs	Ls	LT	ST	INC
Sta. 76+64.03	76+64.03	4° 26' 43.3" (RT)	0° 50' 35.3"	225.00'	150.00'	75.00'	75.00'
				D = 2° 28' 10.7"	L = 840.63'	T = 424.98'	SE = 0.6
							R = 2,320.00'

(FLYOVER)

Station	PI	Δ	θs	Ls	LT	ST	INC
Sta. 76+64.03	76+64.03	4° 26' 43.3" (RT)	0° 50' 35.3"	225.00'	150.00'	75.00'	75.00'
				D = 2° 28' 10.7"	L = 840.63'	T = 424.98'	SE = 0.6
							R = 2,320.00'

(FLYOVER)

Station	PI	Δ	θs	Ls	LT	ST	INC
Sta. 76+64.03	76+64.03	4° 26' 43.3" (RT)	0° 50' 35.3"	225.00'	150.00'	75.00'	75.00'
				D = 2° 28' 10.7"	L = 840.63'	T = 424.98'	SE = 0.6
							R = 2,320.00'

(FLYOVER)

Station	PI	Δ	θs	Ls	LT	ST	INC
Sta. 76+64.03	76+64.03	4° 26' 43.3" (RT)	0° 50' 35.3"	225.00'	150.00'	75.00'	75.00'
				D = 2° 28' 10.7"	L = 840.63'	T = 424.98'	SE = 0.6
							R = 2,320.00'

(FLYOVER)

Station	PI	Δ	θs	Ls	LT	ST	INC
Sta. 76+64.03	76+64.03	4° 26' 43.3" (RT)	0° 50' 35.3"	225.00'	150.00'	75.00'	75.00'
				D = 2° 28' 10.7"	L = 840.63'	T = 424.98'	SE = 0.6
							R = 2,320.00'

(FLYOVER)