

THE ESTIMATED QUANTITY OF D.I. WATER PIPE FITTINGS ON THIS PLAN SHEET IS 515 POUNDS. THE ACTUAL QUANTITY AND TYPE OF FITTINGS WILL VARY BASED ON FIELD CONDITIONS.

A TOTAL OF 10 WATER METERS ARE SHOWN TO BE REMOVED ON THIS SHEET.
A TOTAL OF 1 FIRE HYDRANT IS SHOWN TO BE REMOVED ON THIS SHEET.

-L-
 Pls Sta. 739+01.93
 Os = 1'11" 52.2"
 Ls = 240.00'
 LT = 160.00'
 ST = 80.00'
 INC = 60.00'

PI Sta. 746+86.55
 Δ = 13° 59' 48.4" (RT)
 D = 0° 59' 53.5"
 L = 1,402.22'
 T = 704.62'
 R = 5,740.00'
 SE = 0.04

Pls Sta. 754+64.16
 Os = 1'11" 52.2"
 Ls = 240.00'
 LT = 160.00'
 ST = 80.00'
 INC = 60.00'

-SRI-
 PI Sta. 11+4.38
 Δ = 5° 56' 30.1" (LT)
 D = 2° 35' 58.7"
 L = 228.56'
 T = 114.38'
 R = 2,204.00'

PI Sta. 19+47.11
 Δ = 8° 44' 23.3" (RT)
 D = 0° 58' 07.1"
 L = 902.27'
 T = 452.07'
 R = 5,915.00'

PI Sta. 11+4.38
 Δ = 1° 04' 51.8"
 D = 467.11'
 T = 233.71'
 R = 5,300.00'

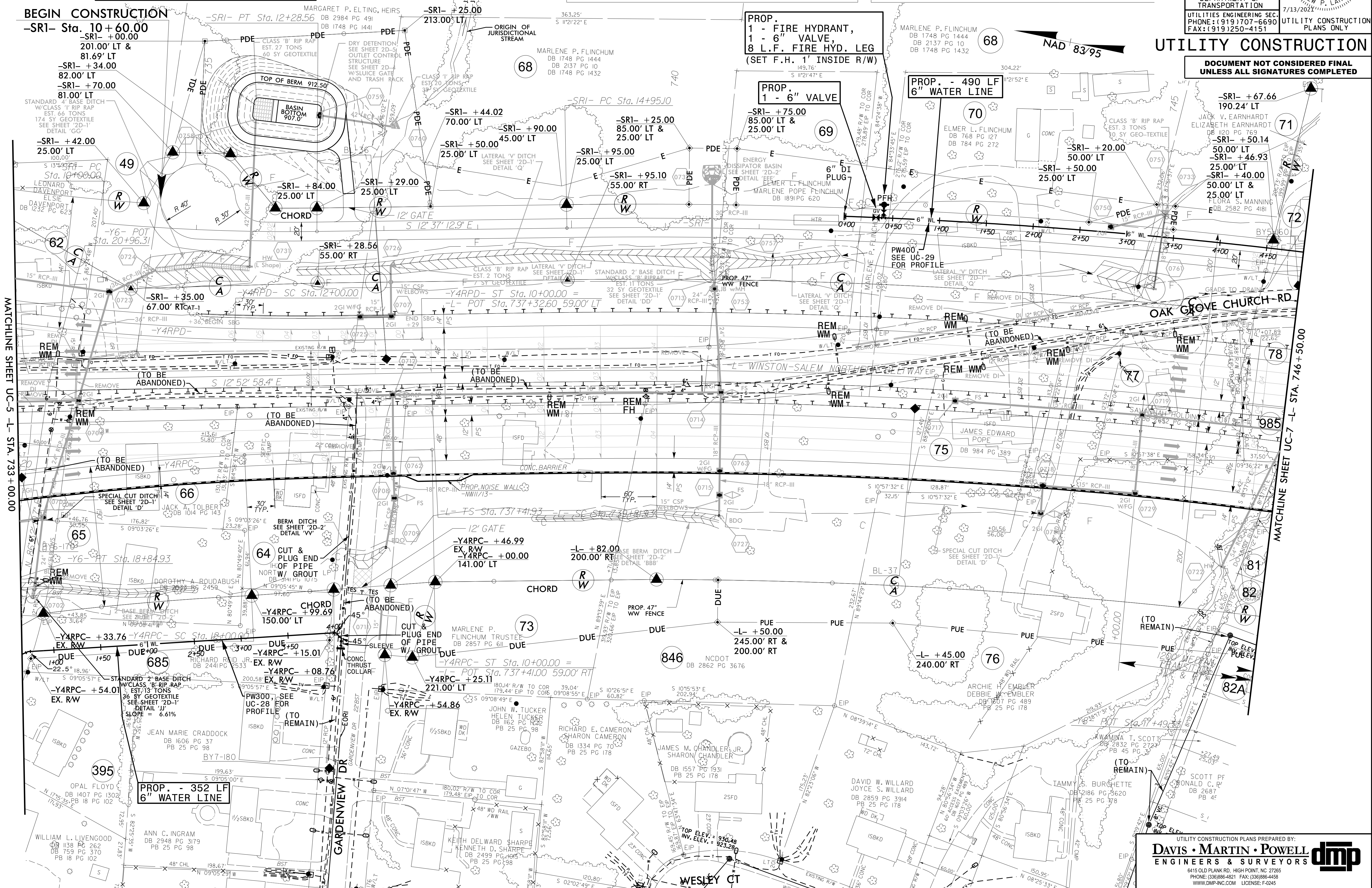


PROJECT REFERENCE NO.	U-2579AB
SHEET NO.	UC-6
DESIGNED BY:	DMP
DRAWN BY:	DMP
CHECKED BY:	DMP
APPROVED BY:	
REVISED:	
NORTH CAROLINA DEPARTMENT OF TRANSPORTATION	7/13/2021
UTILITIES ENGINEERING SEC. PHONE: (919) 707-6690 FAX: (919) 250-4151	UTILITY CONSTRUCTION PLANS ONLY



UTILITY CONSTRUCTION

DOCUMENT NOT CONSIDERED FINAL UNLESS ALL SIGNATURES COMPLETED



REVISIONS

MATCHLINE SHEET UC-5 - L- STA. 733+00.00

MATCHLINE SHEET UC-7 - L- STA. 746+50.00

UTILITY CONSTRUCTION PLANS PREPARED BY:
DAVIS · MARTIN · POWELL
 ENGINEERS & SURVEYORS

6415 OLD PLANK RD., HIGH POINT, NC 27265
 PHONE: (336) 886-4821 FAX: (336) 886-4458
 WWW.DMP-INC.COM LICENSE: F-0245