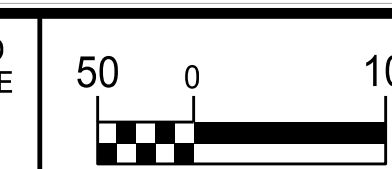


**REVISIONS**

1	ADD 1" FIRE HYDRANT, 6 VALVE, 10 L.F. FIRE HYD. LEG
2	ADD 1" FIRE HYDRANT, 6 VALVE, 10 L.F. FIRE HYD. LEG
3	ADD 1" FIRE HYDRANT, 6 VALVE, 10 L.F. FIRE HYD. LEG
4	ADD 1" FIRE HYDRANT, 6 VALVE, 10 L.F. FIRE HYD. LEG
5	ADD 1" FIRE HYDRANT, 6 VALVE, 10 L.F. FIRE HYD. LEG
6	ADD 1" FIRE HYDRANT, 6 VALVE, 10 L.F. FIRE HYD. LEG
7	ADD 1" FIRE HYDRANT, 6 VALVE, 10 L.F. FIRE HYD. LEG
8	ADD 1" FIRE HYDRANT, 6 VALVE, 10 L.F. FIRE HYD. LEG
9	ADD 1" FIRE HYDRANT, 6 VALVE, 10 L.F. FIRE HYD. LEG
10	ADD 1" FIRE HYDRANT, 6 VALVE, 10 L.F. FIRE HYD. LEG
11	ADD 1" FIRE HYDRANT, 6 VALVE, 10 L.F. FIRE HYD. LEG
12	ADD 1" FIRE HYDRANT, 6 VALVE, 10 L.F. FIRE HYD. LEG
13	ADD 1" FIRE HYDRANT, 6 VALVE, 10 L.F. FIRE HYD. LEG
14	ADD 1" FIRE HYDRANT, 6 VALVE, 10 L.F. FIRE HYD. LEG
15	ADD 1" FIRE HYDRANT, 6 VALVE, 10 L.F. FIRE HYD. LEG
16	ADD 1" FIRE HYDRANT, 6 VALVE, 10 L.F. FIRE HYD. LEG
17	ADD 1" FIRE HYDRANT, 6 VALVE, 10 L.F. FIRE HYD. LEG
18	ADD 1" FIRE HYDRANT, 6 VALVE, 10 L.F. FIRE HYD. LEG
19	ADD 1" FIRE HYDRANT, 6 VALVE, 10 L.F. FIRE HYD. LEG
20	ADD 1" FIRE HYDRANT, 6 VALVE, 10 L.F. FIRE HYD. LEG
21	ADD 1" FIRE HYDRANT, 6 VALVE, 10 L.F. FIRE HYD. LEG
22	ADD 1" FIRE HYDRANT, 6 VALVE, 10 L.F. FIRE HYD. LEG
23	ADD 1" FIRE HYDRANT, 6 VALVE, 10 L.F. FIRE HYD. LEG
24	ADD 1" FIRE HYDRANT, 6 VALVE, 10 L.F. FIRE HYD. LEG
25	ADD 1" FIRE HYDRANT, 6 VALVE, 10 L.F. FIRE HYD. LEG
26	ADD 1" FIRE HYDRANT, 6 VALVE, 10 L.F. FIRE HYD. LEG
27	ADD 1" FIRE HYDRANT, 6 VALVE, 10 L.F. FIRE HYD. LEG
28	ADD 1" FIRE HYDRANT, 6 VALVE, 10 L.F. FIRE HYD. LEG
29	ADD 1" FIRE HYDRANT, 6 VALVE, 10 L.F. FIRE HYD. LEG
30	ADD 1" FIRE HYDRANT, 6 VALVE, 10 L.F. FIRE HYD. LEG
31	ADD 1" FIRE HYDRANT, 6 VALVE, 10 L.F. FIRE HYD. LEG
32	ADD 1" FIRE HYDRANT, 6 VALVE, 10 L.F. FIRE HYD. LEG
33	ADD 1" FIRE HYDRANT, 6 VALVE, 10 L.F. FIRE HYD. LEG
34	ADD 1" FIRE HYDRANT, 6 VALVE, 10 L.F. FIRE HYD. LEG
35	ADD 1" FIRE HYDRANT, 6 VALVE, 10 L.F. FIRE HYD. LEG
36	ADD 1" FIRE HYDRANT, 6 VALVE, 10 L.F. FIRE HYD. LEG
37	ADD 1" FIRE HYDRANT, 6 VALVE, 10 L.F. FIRE HYD. LEG
38	ADD 1" FIRE HYDRANT, 6 VALVE, 10 L.F. FIRE HYD. LEG
39	ADD 1" FIRE HYDRANT, 6 VALVE, 10 L.F. FIRE HYD. LEG
40	ADD 1" FIRE HYDRANT, 6 VALVE, 10 L.F. FIRE HYD. LEG
41	ADD 1" FIRE HYDRANT, 6 VALVE, 10 L.F. FIRE HYD. LEG
42	ADD 1" FIRE HYDRANT, 6 VALVE, 10 L.F. FIRE HYD. LEG
43	ADD 1" FIRE HYDRANT, 6 VALVE, 10 L.F. FIRE HYD. LEG
44	ADD 1" FIRE HYDRANT, 6 VALVE, 10 L.F. FIRE HYD. LEG
45	ADD 1" FIRE HYDRANT, 6 VALVE, 10 L.F. FIRE HYD. LEG
46	ADD 1" FIRE HYDRANT, 6 VALVE, 10 L.F. FIRE HYD. LEG
47	ADD 1" FIRE HYDRANT, 6 VALVE, 10 L.F. FIRE HYD. LEG
48	ADD 1" FIRE HYDRANT, 6 VALVE, 10 L.F. FIRE HYD. LEG
49	ADD 1" FIRE HYDRANT, 6 VALVE, 10 L.F. FIRE HYD. LEG
50	ADD 1" FIRE HYDRANT, 6 VALVE, 10 L.F. FIRE HYD. LEG
51	ADD 1" FIRE HYDRANT, 6 VALVE, 10 L.F. FIRE HYD. LEG
52	ADD 1" FIRE HYDRANT, 6 VALVE, 10 L.F. FIRE HYD. LEG
53	ADD 1" FIRE HYDRANT, 6 VALVE, 10 L.F. FIRE HYD. LEG
54	ADD 1" FIRE HYDRANT, 6 VALVE, 10 L.F. FIRE HYD. LEG
55	ADD 1" FIRE HYDRANT, 6 VALVE, 10 L.F. FIRE HYD. LEG
56	ADD 1" FIRE HYDRANT, 6 VALVE, 10 L.F. FIRE HYD. LEG
57	ADD 1" FIRE HYDRANT, 6 VALVE, 10 L.F. FIRE HYD. LEG
58	ADD 1" FIRE HYDRANT, 6 VALVE, 10 L.F. FIRE HYD. LEG
59	ADD 1" FIRE HYDRANT, 6 VALVE, 10 L.F. FIRE HYD. LEG
60	ADD 1" FIRE HYDRANT, 6 VALVE, 10 L.F. FIRE HYD. LEG
61	ADD 1" FIRE HYDRANT, 6 VALVE, 10 L.F. FIRE HYD. LEG
62	ADD 1" FIRE HYDRANT, 6 VALVE, 10 L.F. FIRE HYD. LEG
63	ADD 1" FIRE HYDRANT, 6 VALVE, 10 L.F. FIRE HYD. LEG
64	ADD 1" FIRE HYDRANT, 6 VALVE, 10 L.F. FIRE HYD. LEG
65	ADD 1" FIRE HYDRANT, 6 VALVE, 10 L.F. FIRE HYD. LEG
66	ADD 1" FIRE HYDRANT, 6 VALVE, 10 L.F. FIRE HYD. LEG
67	ADD 1" FIRE HYDRANT, 6 VALVE, 10 L.F. FIRE HYD. LEG
68	ADD 1" FIRE HYDRANT, 6 VALVE, 10 L.F. FIRE HYD. LEG
69	ADD 1" FIRE HYDRANT, 6 VALVE, 10 L.F. FIRE HYD. LEG
70	ADD 1" FIRE HYDRANT, 6 VALVE, 10 L.F. FIRE HYD. LEG
71	ADD 1" FIRE HYDRANT, 6 VALVE, 10 L.F. FIRE HYD. LEG
72	ADD 1" FIRE HYDRANT, 6 VALVE, 10 L.F. FIRE HYD. LEG
73	ADD 1" FIRE HYDRANT, 6 VALVE, 10 L.F. FIRE HYD. LEG
74	ADD 1" FIRE HYDRANT, 6 VALVE, 10 L.F. FIRE HYD. LEG
75	ADD 1" FIRE HYDRANT, 6 VALVE, 10 L.F. FIRE HYD. LEG
76	ADD 1" FIRE HYDRANT, 6 VALVE, 10 L.F. FIRE HYD. LEG
77	ADD 1" FIRE HYDRANT, 6 VALVE, 10 L.F. FIRE HYD. LEG
78	ADD 1" FIRE HYDRANT, 6 VALVE, 10 L.F. FIRE HYD. LEG
79	ADD 1" FIRE HYDRANT, 6 VALVE, 10 L.F. FIRE HYD. LEG
80	ADD 1" FIRE HYDRANT, 6 VALVE, 10 L.F. FIRE HYD. LEG
81	ADD 1" FIRE HYDRANT, 6 VALVE, 10 L.F. FIRE HYD. LEG
82	ADD 1" FIRE HYDRANT, 6 VALVE, 10 L.F. FIRE HYD. LEG
83	ADD 1" FIRE HYDRANT, 6 VALVE, 10 L.F. FIRE HYD. LEG
84	ADD 1" FIRE HYDRANT, 6 VALVE, 10 L.F. FIRE HYD. LEG
85	ADD 1" FIRE HYDRANT, 6 VALVE, 10 L.F. FIRE HYD. LEG
86	ADD 1" FIRE HYDRANT, 6 VALVE, 10 L.F. FIRE HYD. LEG
87	ADD 1" FIRE HYDRANT, 6 VALVE, 10 L.F. FIRE HYD. LEG
88	ADD 1" FIRE HYDRANT, 6 VALVE, 10 L.F. FIRE HYD. LEG
89	ADD 1" FIRE HYDRANT, 6 VALVE, 10 L.F. FIRE HYD. LEG
90	ADD 1" FIRE HYDRANT, 6 VALVE, 10 L.F. FIRE HYD. LEG
91	ADD 1" FIRE HYDRANT, 6 VALVE, 10 L.F. FIRE HYD. LEG
92	ADD 1" FIRE HYDRANT, 6 VALVE, 10 L.F. FIRE HYD. LEG
93	ADD 1" FIRE HYDRANT, 6 VALVE, 10 L.F. FIRE HYD. LEG
94	ADD 1" FIRE HYDRANT, 6 VALVE, 10 L.F. FIRE HYD. LEG
95	ADD 1" FIRE HYDRANT, 6 VALVE, 10 L.F. FIRE HYD. LEG
96	ADD 1" FIRE HYDRANT, 6 VALVE, 10 L.F. FIRE HYD. LEG
97	ADD 1" FIRE HYDRANT, 6 VALVE, 10 L.F. FIRE HYD. LEG
98	ADD 1" FIRE HYDRANT, 6 VALVE, 10 L.F. FIRE HYD. LEG
99	ADD 1" FIRE HYDRANT, 6 VALVE, 10 L.F. FIRE HYD. LEG
100	ADD 1" FIRE HYDRANT, 6 VALVE, 10 L.F. FIRE HYD. LEG

SEE SHEETS 5A, 5B, 5C, AND 5D FOR 1"=50' SCALE INSETS OF THE FOUR QUADRANTS OF THIS SHEET, FOR CLARITY.



THE ESTIMATED QUANTITY OF D.I. WATER PIPE FITTINGS ON THIS PLAN SHEET IS 2,270 POUNDS. THE ACTUAL QUANTITY AND TYPE OF FITTINGS WILL VARY BASED ON FIELD CONDITIONS.

TOTAL OF 44 WATER METERS ARE SHOWN TO BE REMOVED ON THIS SHEET.  
A TOTAL OF 6 FIRE HYDRANTS ARE SHOWN TO BE REMOVED ON THIS SHEET.

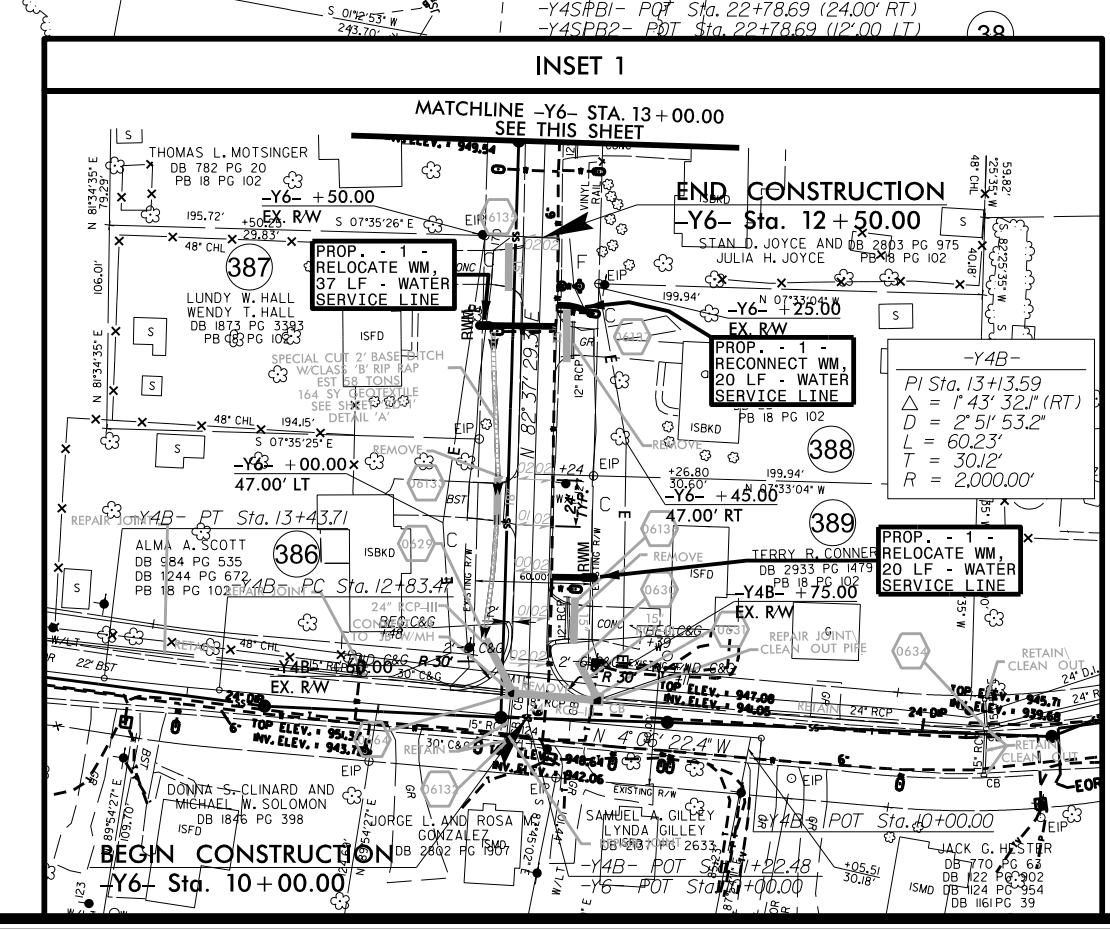
ON THIS PLAN SHEET, THE ESTIMATED QUANTITY OF SANITARY SEWER CLEANOUTS IS 4 EACH, AND THE ESTIMATED QUANTITY OF SEWER SERVICE LINE IS 200 L.F. THE ACTUAL QUANTITIES WILL VARY BASED ON FIELD CONDITIONS.

PARCELS WHERE SEWER SERVICES MAY NEED RENEWAL:  
PARCEL 15 - 475 SEDGE GARDEN ROAD @ SCHOOL  
PARCEL 408 - 520 SEDGE GARDEN ROAD (LONG SIDE SERVICE RENEWAL)  
PARCEL 409 - 4339 OLD WINSTON ROAD (LONG SIDE SERVICE RENEWAL)

PROJECT REFERENCE NO.	U-2579AB	SHEET NO.	UC-5
DESIGNED BY:	DMP		
DRAWN BY:	DMP		
CHECKED BY:	DMP		
APPROVED BY:	DMP		
REVISED:			
NORTH CAROLINA DEPARTMENT OF TRANSPORTATION		UTILITY CONSTRUCTION PLANS ONLY	
UTILITIES ENGINEERING SEC. PHONE: (919) 707-6690 FAX: (919) 250-4151		7/13/2021	

### UTILITY CONSTRUCTION

**DOCUMENT NOT CONSIDERED FINAL UNLESS ALL SIGNATURES COMPLETED**



- 1 - Y4RP - PT Sta. 24+68.50
- 2 - Y4NB - PT Sta. 15+44.7 1200 RT
- 3 - Y4SP2 - PT Sta. 26+73.99
- 4 - Y4EB - PT Sta. 15+06.58
- 5 - Y4EP - PT Sta. 15+02.50
- 6 - Y4EP - PT Sta. 15+36.7 600 RT
- 7 - Y4EB - PC Sta. 16+96.25
- 8 - Y4EB - PC Sta. 17+50.3
- 9 - Y4NB - PC Sta. 17+00.08
- 10 - Y4SP2 - PT Sta. 25+43.28
- 11 - Y4NB - PT Sta. 16+66.53 600 RT
- 12 - Y4EP - PT Sta. 12+73.92
- 13 - Y4NB - PT Sta. 12+73.92
- 14 - Y4NB - PT Sta. 16+00.0