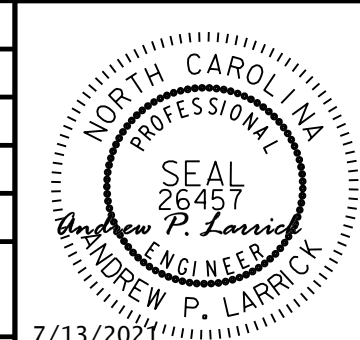
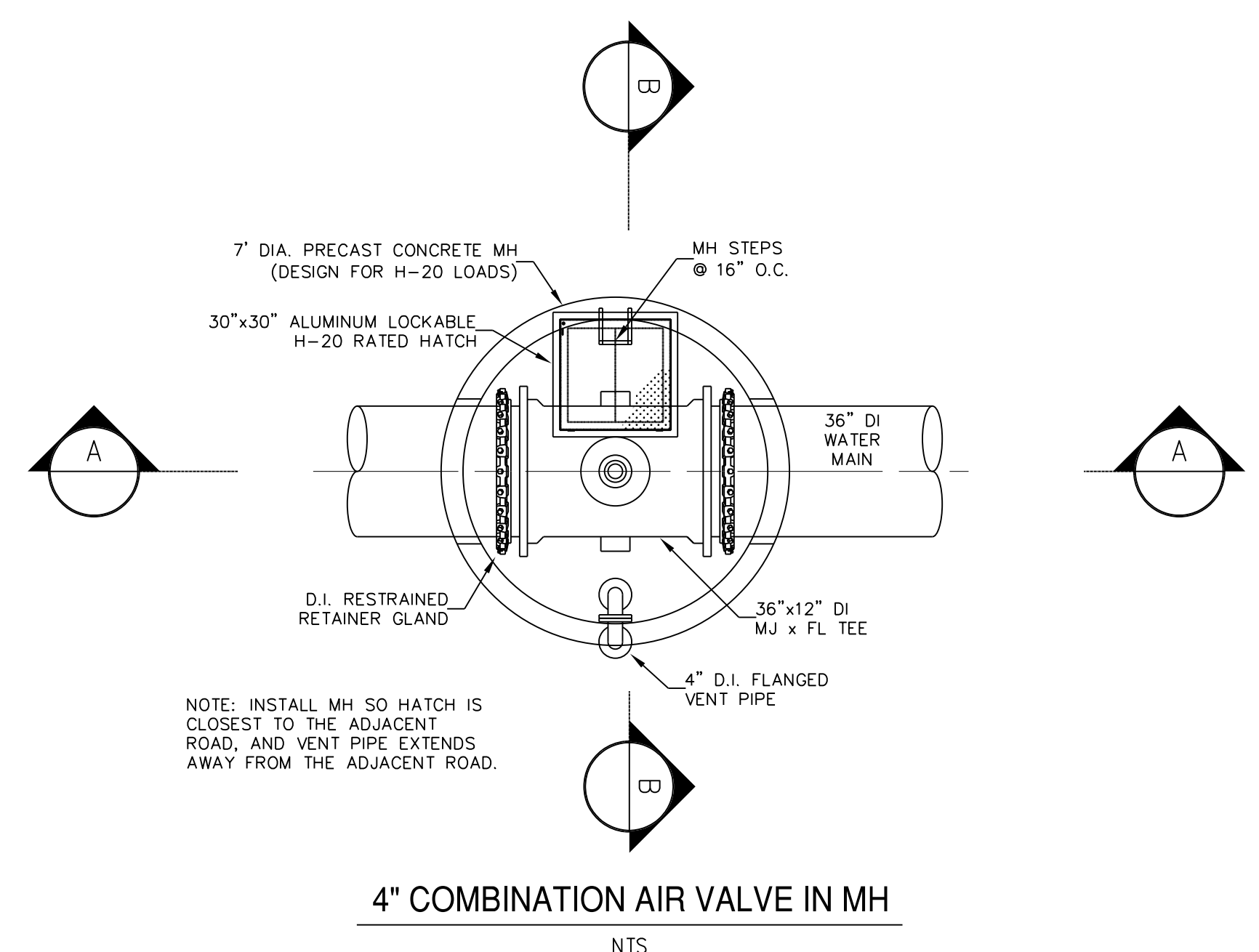


5/14/99

PROJECT REFERENCE NO.	SHEET NO.
U-2579AB	UC-3H
DESIGNED BY: APL	
DRAWN BY: RDL	
CHECKED BY: APL	
APPROVED BY:	
REVISED:	
NORTH CAROLINA DEPARTMENT OF TRANSPORTATION	7/13/2021
UTILITIES ENGINEERING SEC. PHONE: (919) 707-6690 FAX: (919) 250-4151	UTILITY CONSTRUCTION PLANS ONLY

UTILITY CONSTRUCTION

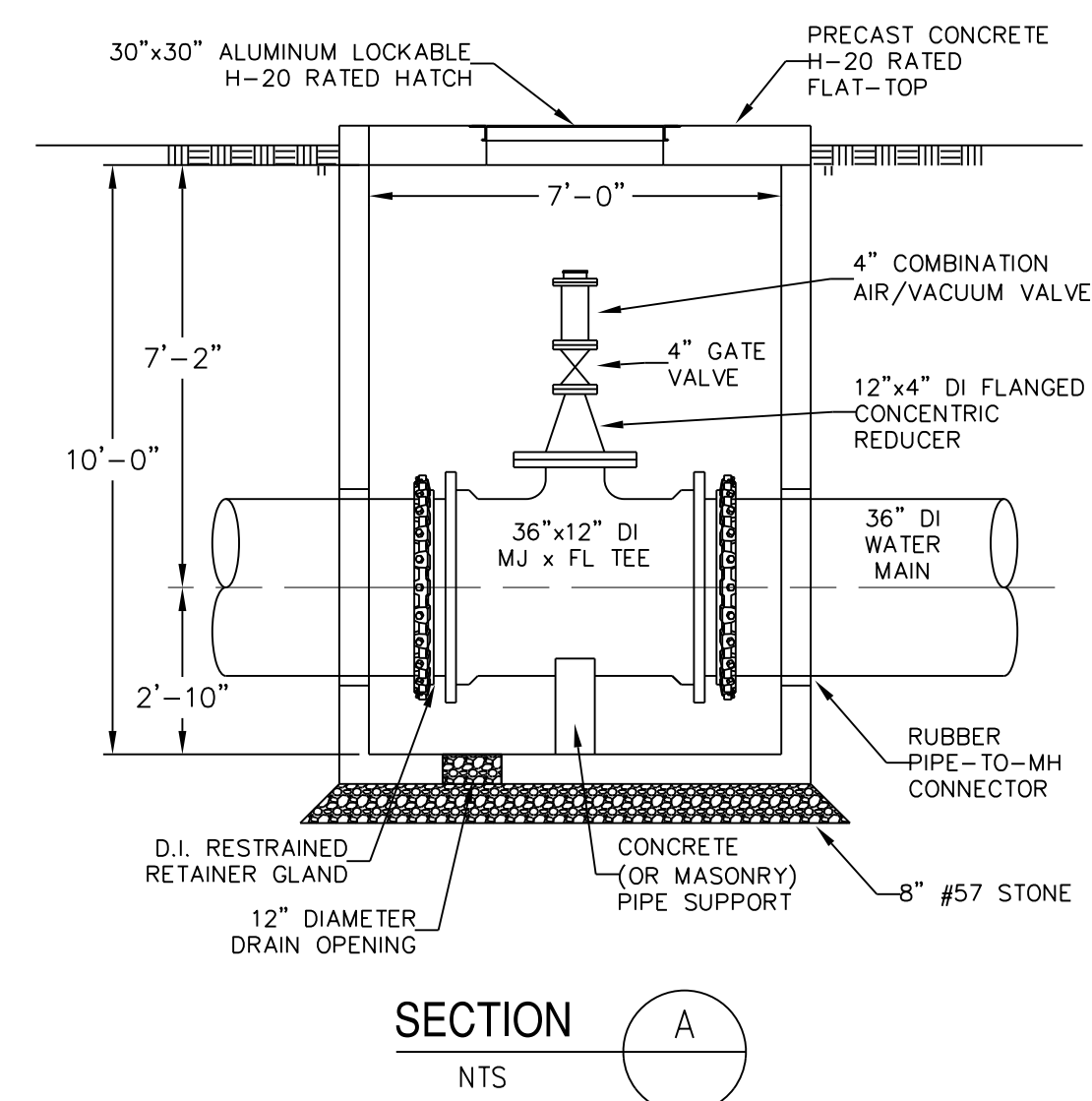
DOCUMENT NOT CONSIDERED FINAL UNLESS ALL SIGNATURES COMPLETED



NOTE: INSTALL MH SO HATCH IS CLOSEST TO THE ADJACENT ROAD, AND VENT PIPE EXTENDS AWAY FROM THE ADJACENT ROAD.

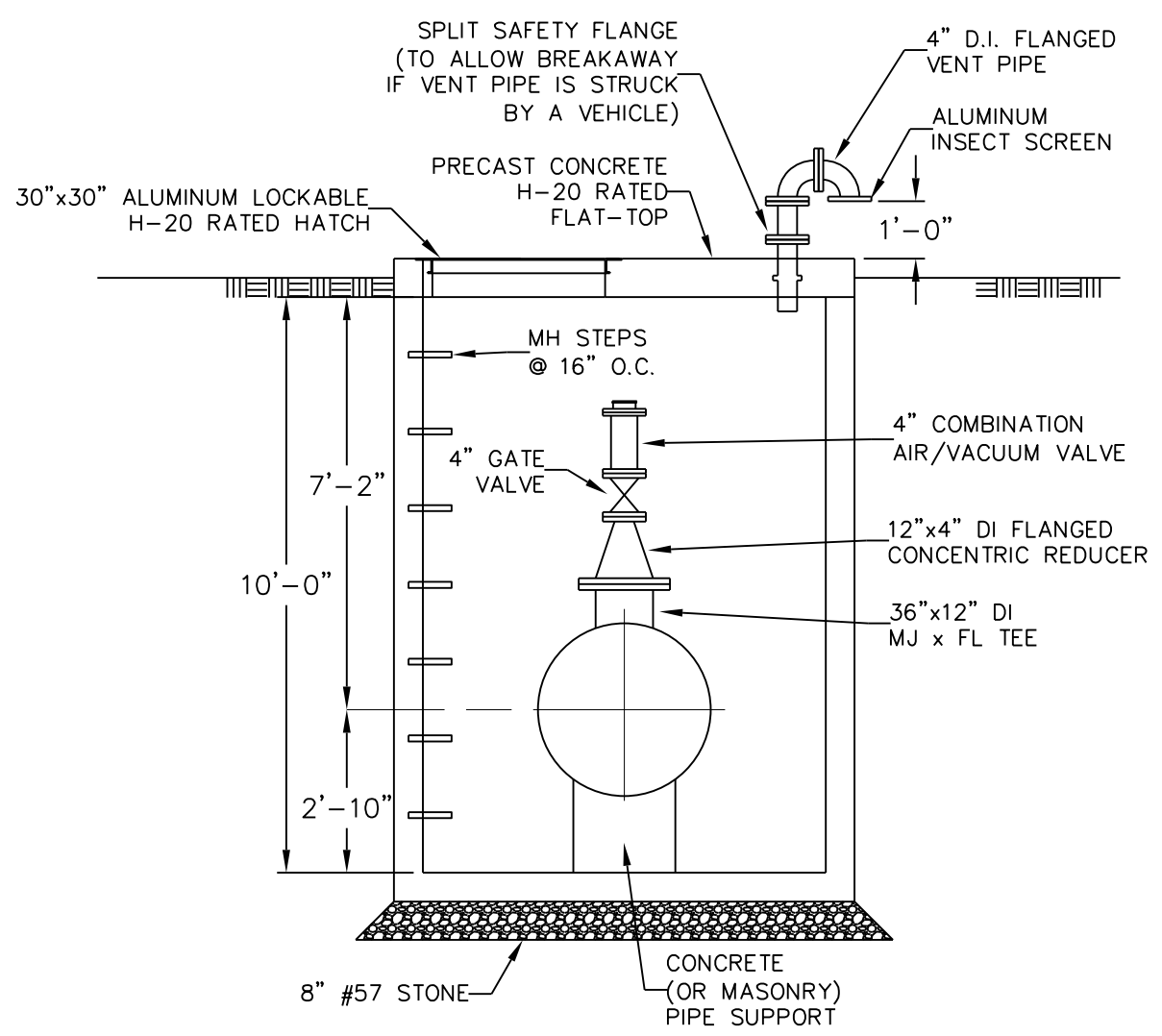
4" COMBINATION AIR VALVE IN MH

NTS



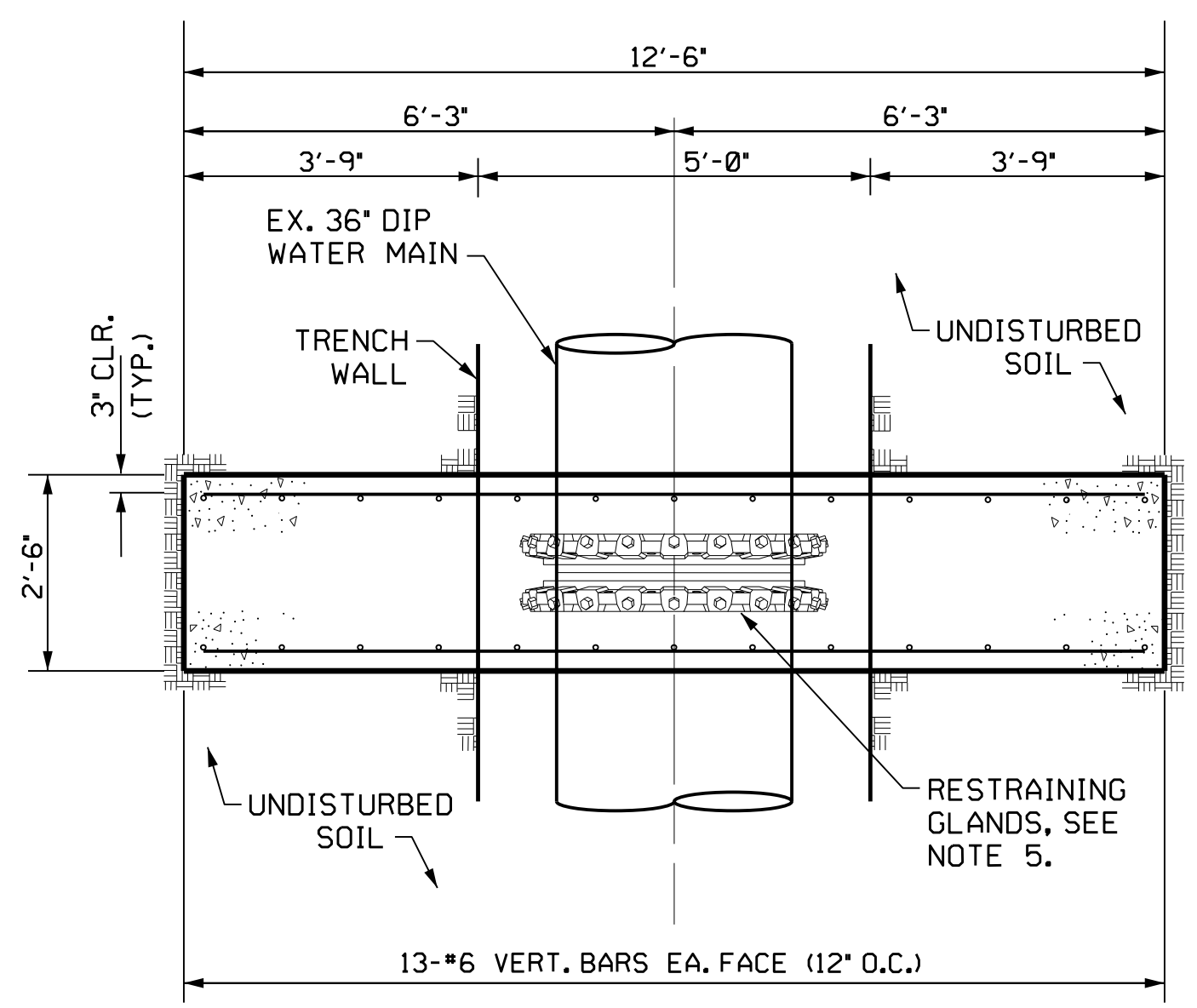
SECTION A

NTS

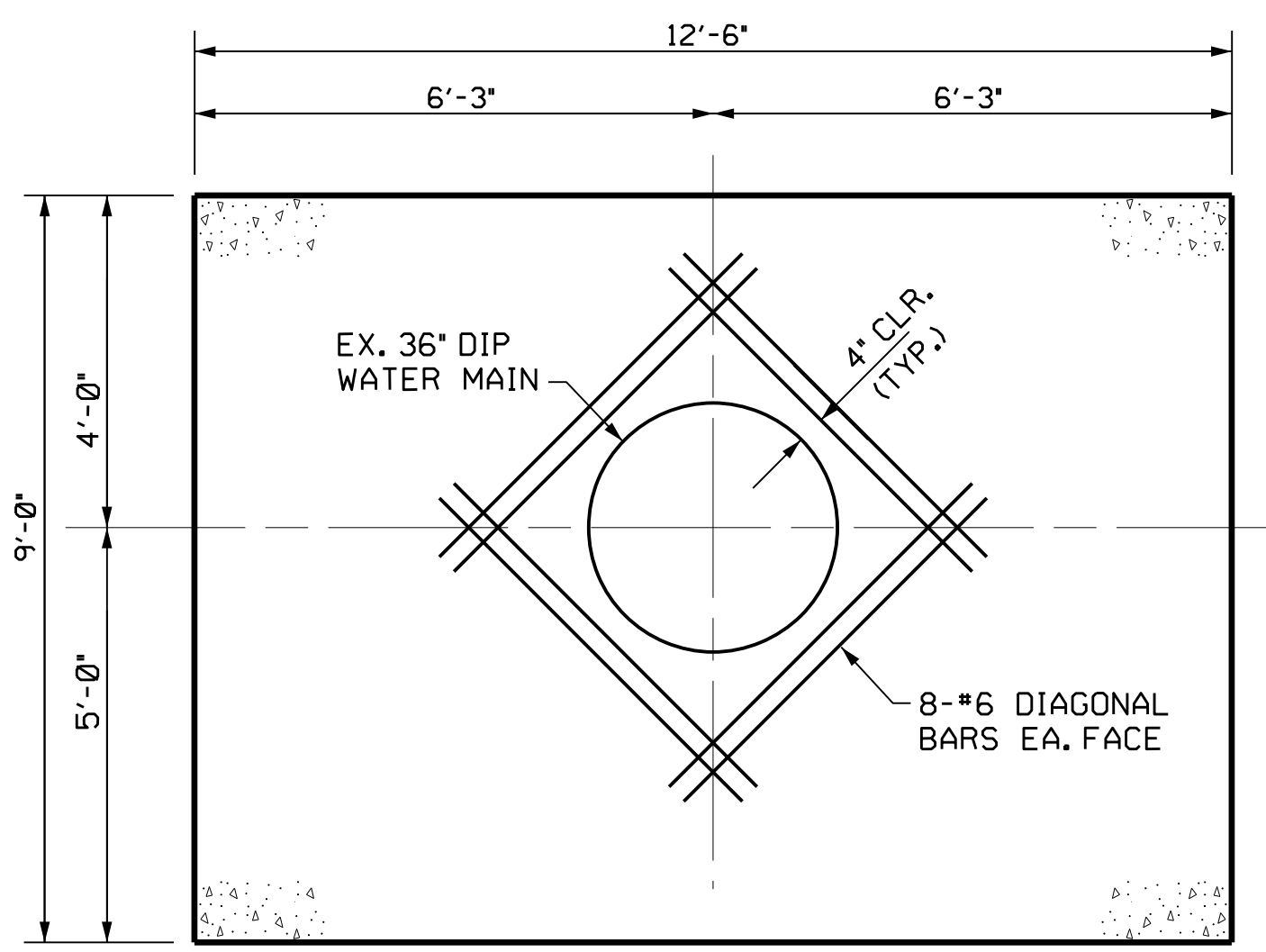


SECTION B

NTS



PLAN VIEW

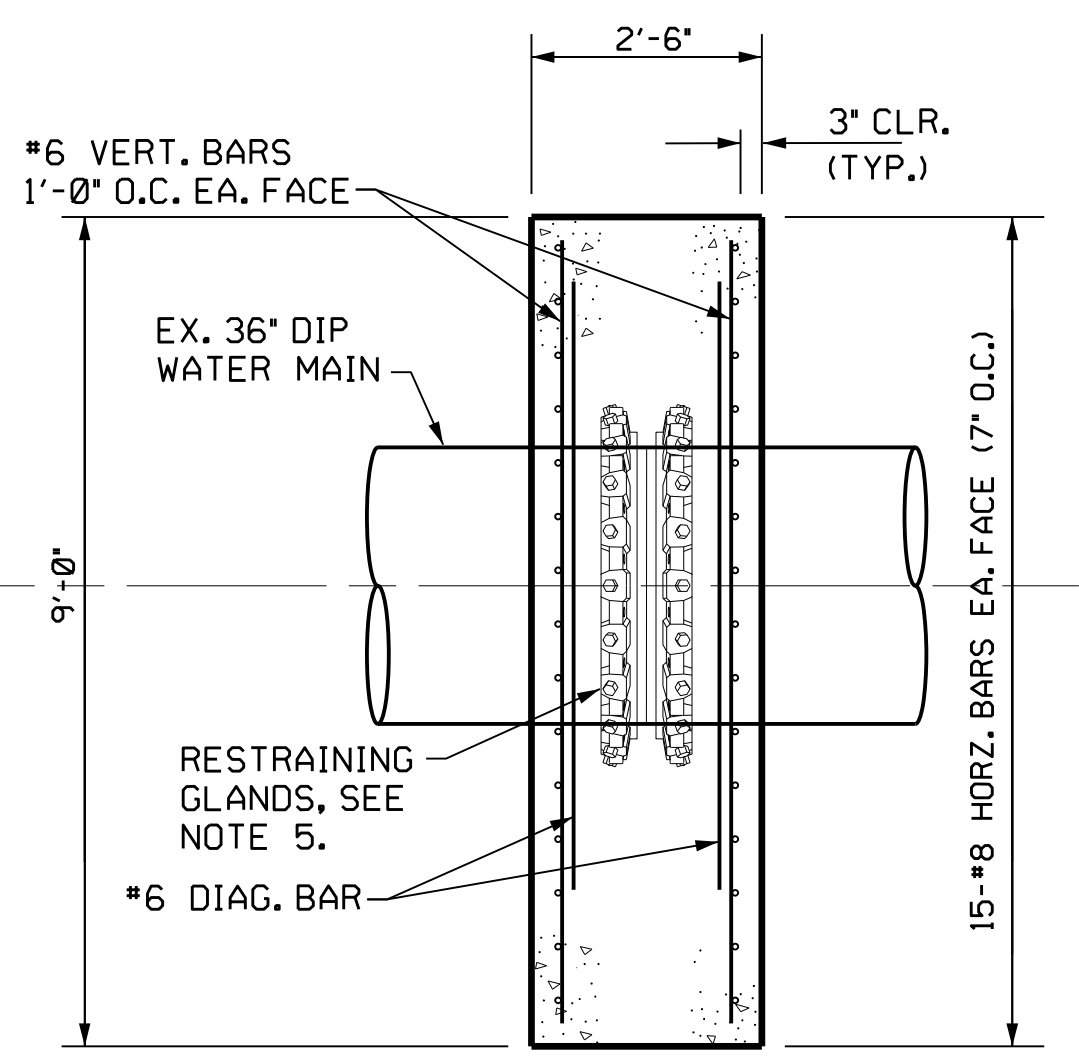


ELEVATION VIEW

(HORIZ. & VERT. BARS NOT SHOWN FOR CLARITY)

NOTES:

1. CONCRETE FOR THRUST COLLAR SHALL BE MIN. 3,000 PSI CLASS A, NON-AIR ENTRAINED. REINFORCING STEEL FOR THRUST WALL SHALL BE GRADE 60.
2. DESIGN IS BASED ON TEST PRESSURE OF 200 PSI WITH A SAFETY FACTOR = 1.25 AND ASSUMED SOIL BEARING CAPACITY OF 2,500 LBS/SF.
3. DIAGONAL BARS SHALL BE PLACED INSIDE VERTICAL BARS AS SHOWN. DIAGONAL BARS SHALL BE 5'-2" LONG.
4. THRUST COLLAR SHALL BE ORIENTATED APPROXIMATELY AT THE CENTER OF PIPE JOINT.
5. TWO (2) OPPOSING SPLIT RESTRAINING GLANDS BOLTED TOGETHER WITH STAINLESS STEEL BOLTS. GRIPPING WEDGES SHALL BE TORQUED TO MANUFACTURERS SPECIFICATIONS. RESTRAINING GLANDS SHALL BE WRAPPED WITH POLYETHELENE AND SECURED PRIOR TO POURING CONCRETE.
6. ANY PROPOSED MODIFICATIONS TO THIS DETAIL, BASED ON THE FIELD CONDITIONS, MUST BE APPROVED BY THE ENGINEER OR THE CITY'S FIELD INSPECTOR.



END SECTION VIEW

CONCRETE THRUST COLLAR FOR 36" DIAMETER D.I. WATER PIPE

(NOT TO SCALE)

REVISIONS

1
2
3
4
5
6
7
8
9
10
11
12
13
14
15
16
17
18
19
20
21
22
23
24
25
26
27
28
29
30
31
32
33
34
35
36
37
38
39
40
41
42
43
44
45
46
47
48
49
50
51
52
53
54
55
56
57
58
59
60
61
62
63
64
65
66
67
68
69
70
71
72
73
74
75
76
77
78
79
80
81
82
83
84
85
86
87
88
89
90
91
92
93
94
95
96
97
98
99
100