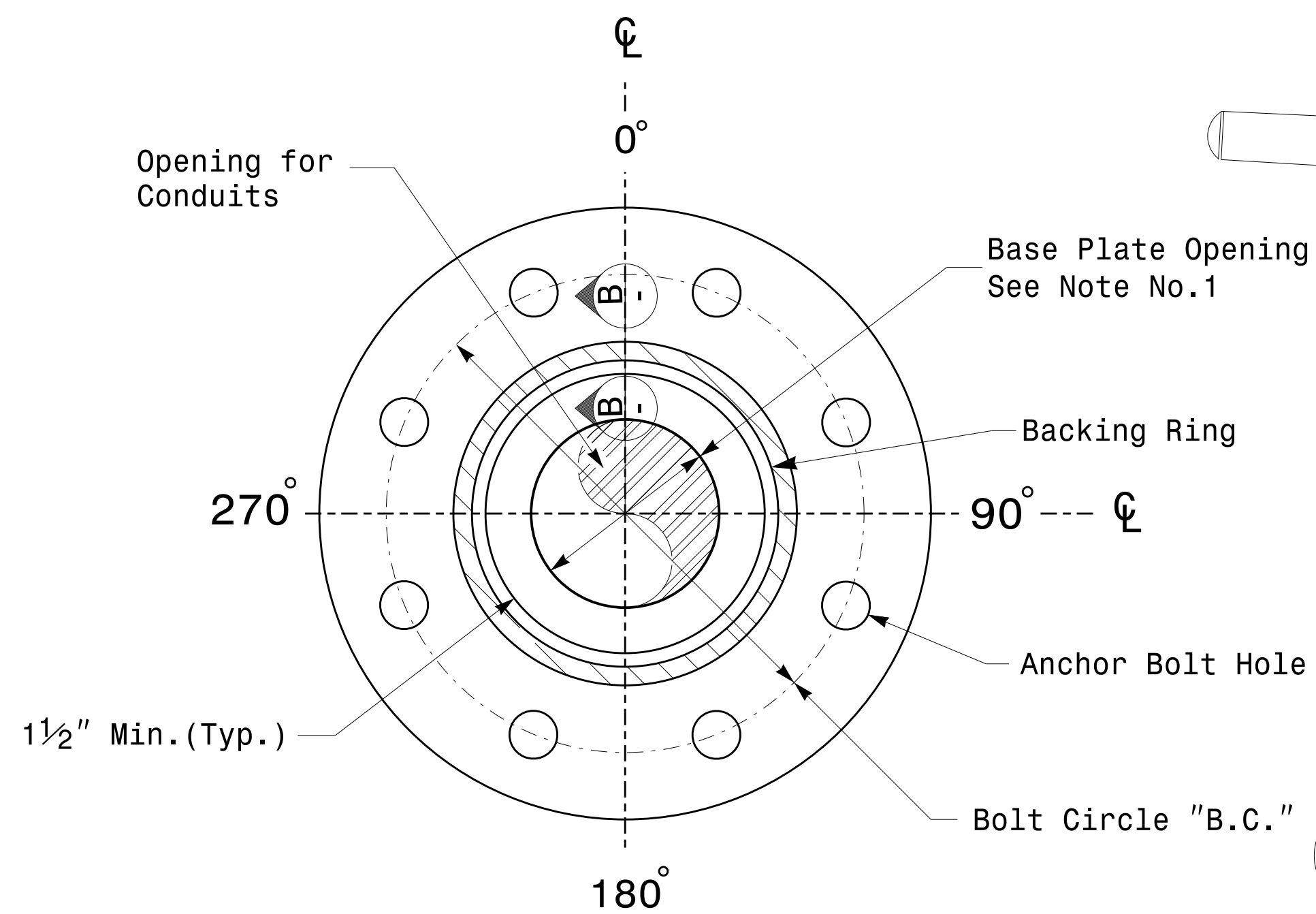
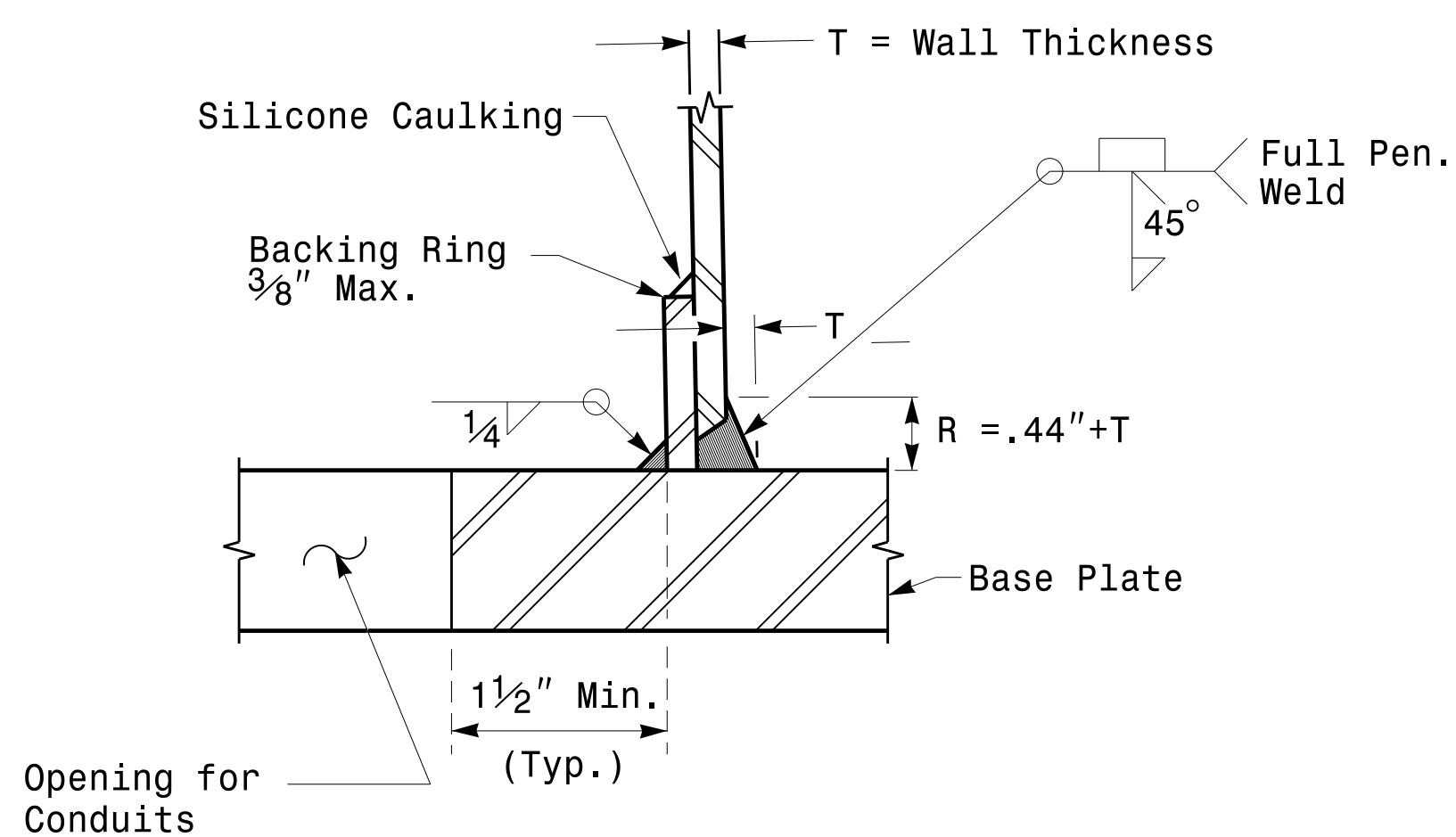


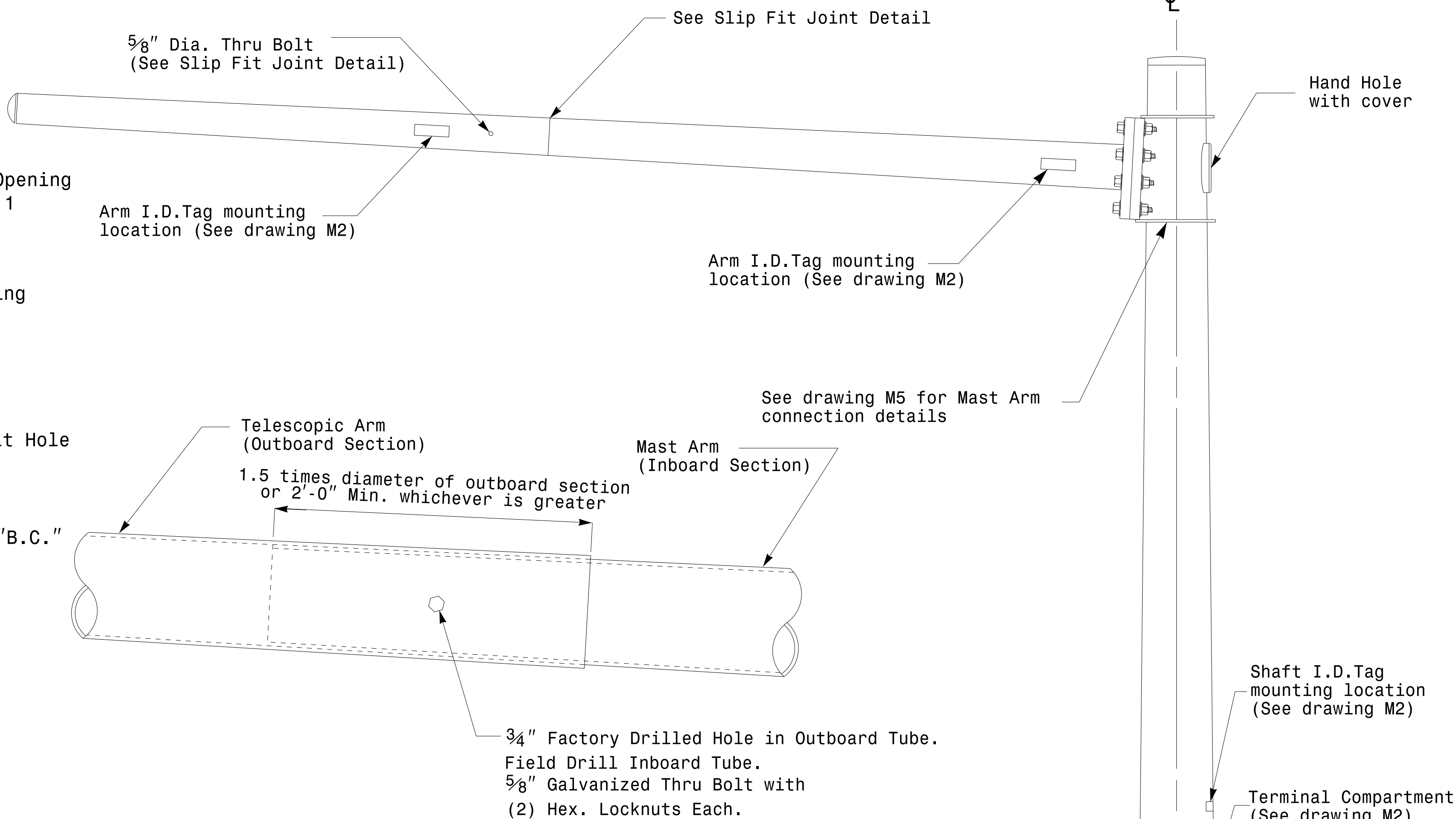
Note:  
1. Opening in pole base plate shall be equal to pole base inside diameter minus 3 1/2" but shall not be less than 8 1/2".



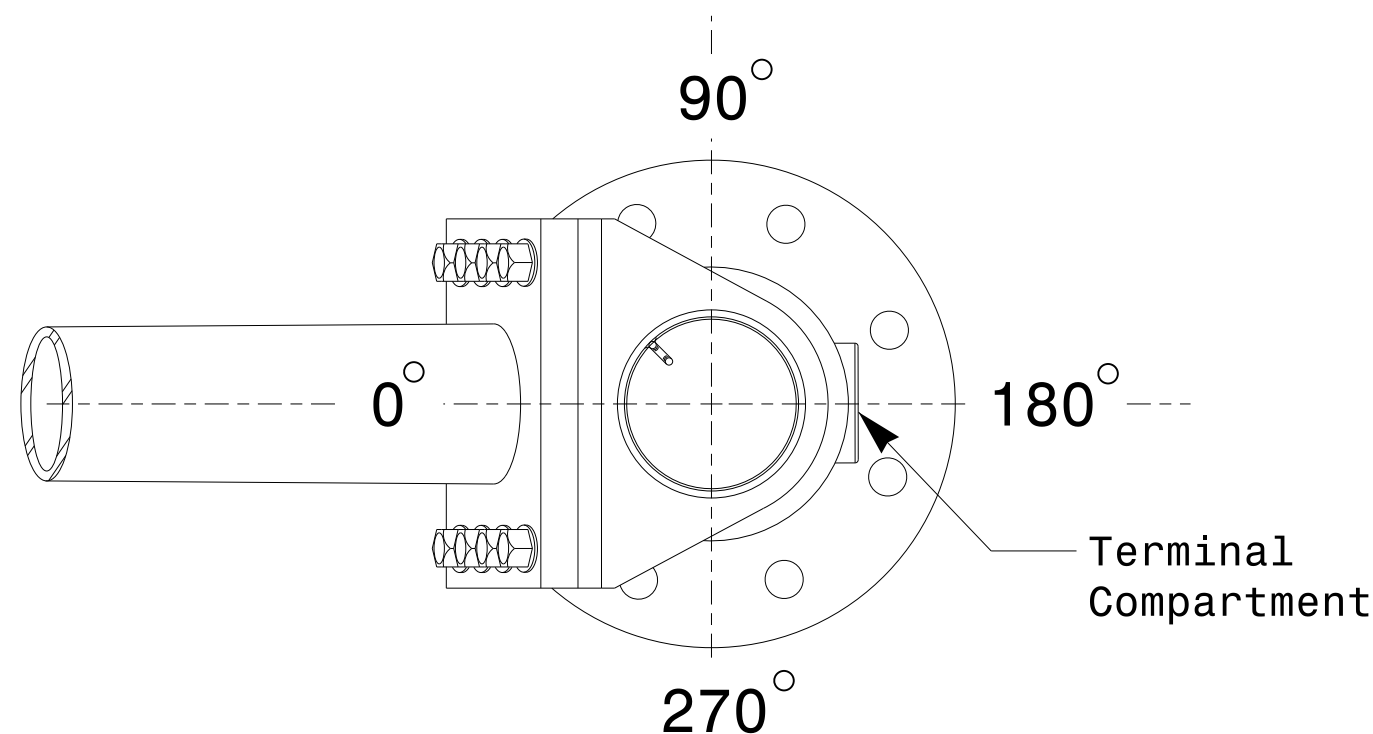
**Section A-A**  
**Pole Base Plate Details**



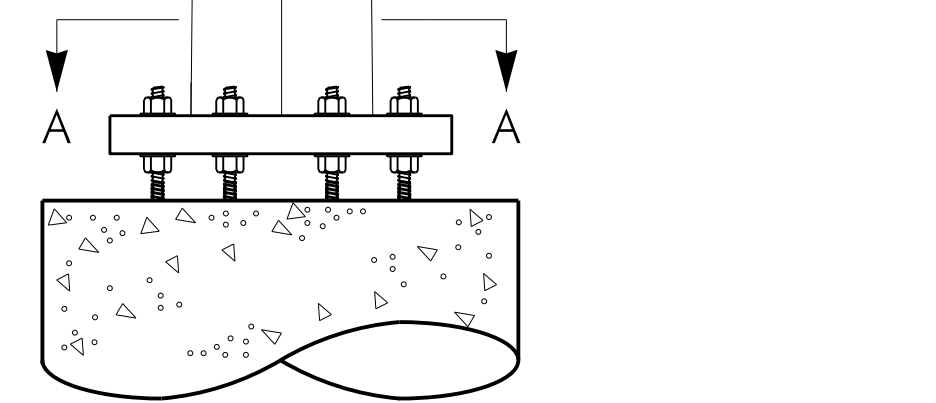
**Section B-B**  
**(Pole Attachment to Base Plate)**  
**Full-Penetration Groove Weld Detail**



**Slip Fit Joint Detail for Mast Arm**



**Mast Arm Radial Orientation**



**Mast Arm Pole**

**Fabrication Details – Mast Arm Poles**

11-OCT-2017 08:33 136560115 Signal&Sigrac Design Section Eastern Region\MT Sheets\2016\2014 Sig.M4 Std. Fabrication Detail\Mast Arm Poles.dgn

	<b>Typical Fabrication Details For Mast Arm Poles</b>		SEAL 
	PLAN DATE: <b>OCTOBER 2017</b> PREPARED BY: <b>N. BITTING</b>	DESIGNED BY: <b>K.C. DURIGON</b> REVIEWED BY: <b>D.C. SARKAR</b>	
SCALE: <b>0 NA</b> NONE	DocuSigned by: 		10/11/2017 DATE