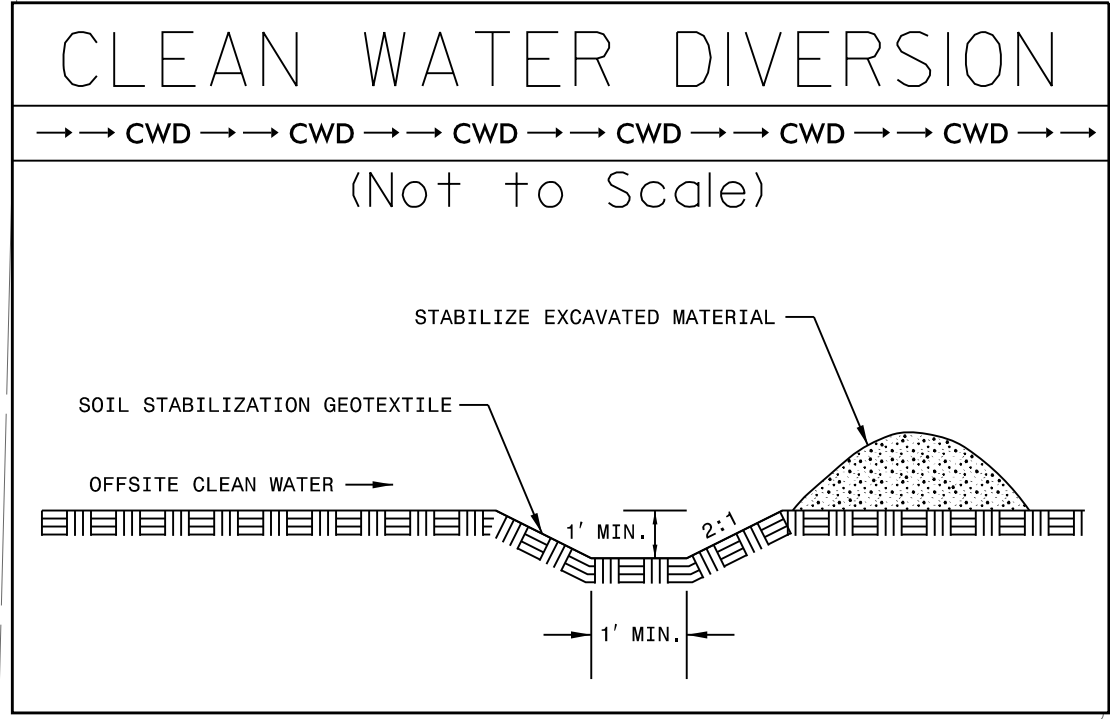


PROJECT REFERENCE NO.	SHEET NO.
U-2579AB	EC-49/CONST. 22
RW SHEET NO.	
ROADWAY DESIGN ENGINEER	HYDRAULICS ENGINEER

**HDR** HDR Engineering, Inc. of the Carolinas  
 555 Fayetteville St. Suite 900 Raleigh, N.C. 27601  
 N.C.B.E.L.S. License Number: F-0116

Place Matting for Erosion Control  
 on Slope as Work Allows.  
 Sta. 149+50 to Sta. 150+00 -Y15- LT  
 Sta. 155+50 to Sta. 156+00 -Y15- RT  
 Sta. 158+00 to Sta. 161+00 -Y15- RT



50 x 30 x 3  
 1.5 inch Skimmer  
 with 1.25 inch  
 Orifice Diameter  
 11 ft. weir  
 (See Tiered Skimmer  
 Basin Detail)  
 ID 22.1 B

Modified Silt Basin  
 Type 'B'  
 50 x 30 x 3  
 11 ft. weir  
 (See Tiered Skimmer  
 Basin Detail)  
 ID 22.1 B

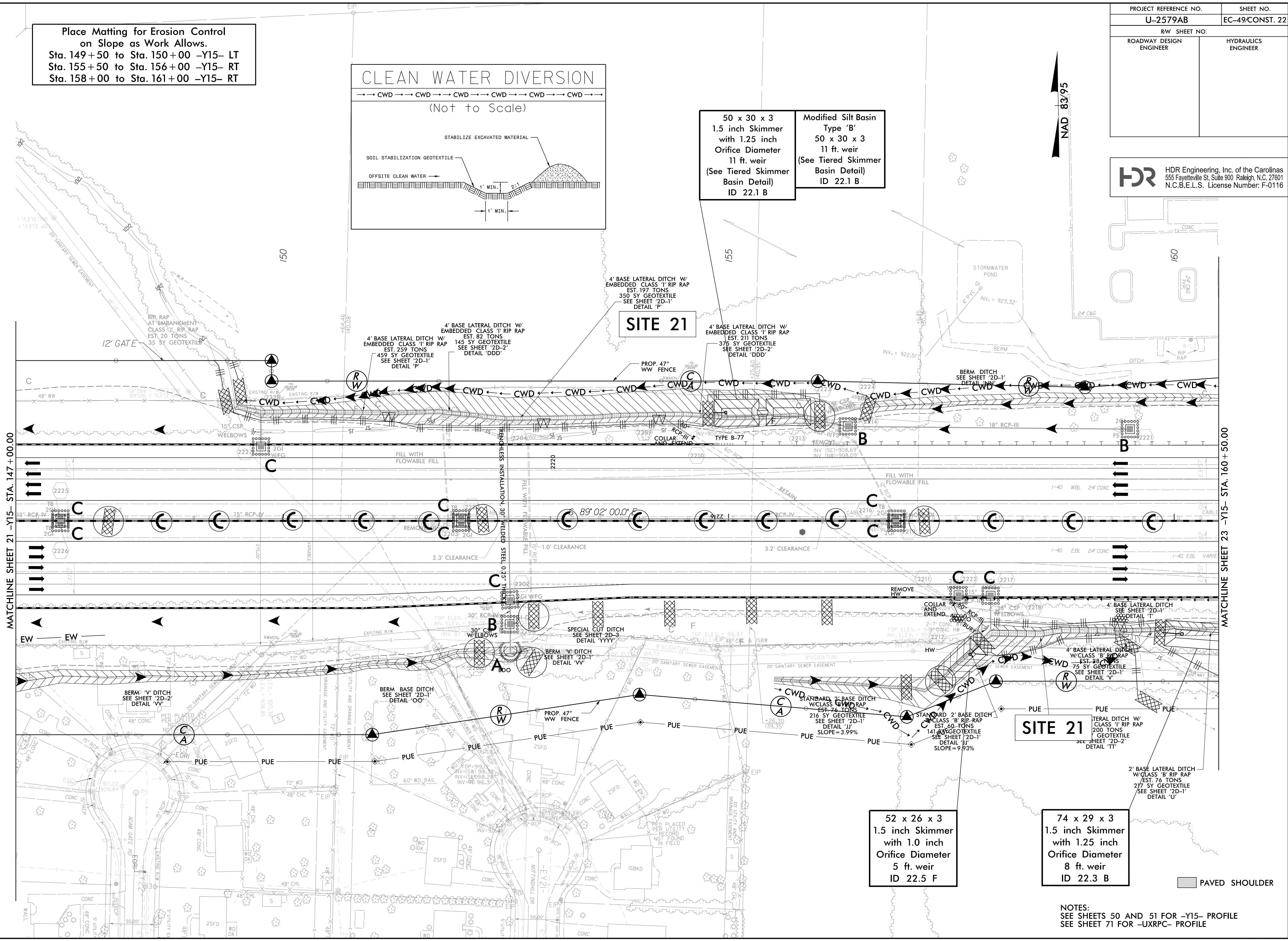
**SITE 21**

**SITE 21**

52 x 26 x 3  
 1.5 inch Skimmer  
 with 1.0 inch  
 Orifice Diameter  
 5 ft. weir  
 ID 22.5 F

74 x 29 x 3  
 1.5 inch Skimmer  
 with 1.25 inch  
 Orifice Diameter  
 8 ft. weir  
 ID 22.3 B

NOTES:  
 SEE SHEETS 50 AND 51 FOR -Y15- PROFILE  
 SEE SHEET 71 FOR -UXRPC- PROFILE



MATCHLINE SHEET 21 -Y15- STA. 147+00.00

MATCHLINE SHEET 23 -Y15- STA. 160+50.00

REVISIONS

PLOT DRIVER: NCDOT\_ec\_color\_eng\_100.plt  
 USER: MDIEHL  
 FILE: NCDOT\NCDOT-U2579AB\6.0.CAD\BIM\6.2.Work\In\_Progress\U-2579AB\Erosion\_Control\U2579ab\_EC\_PSH.dgn  
 PENTABLE: NCDOT\_EC\_FINAL\_BW.tbl  
 TIME: 1:42:09 PM  
 DATE: 7/16/2021