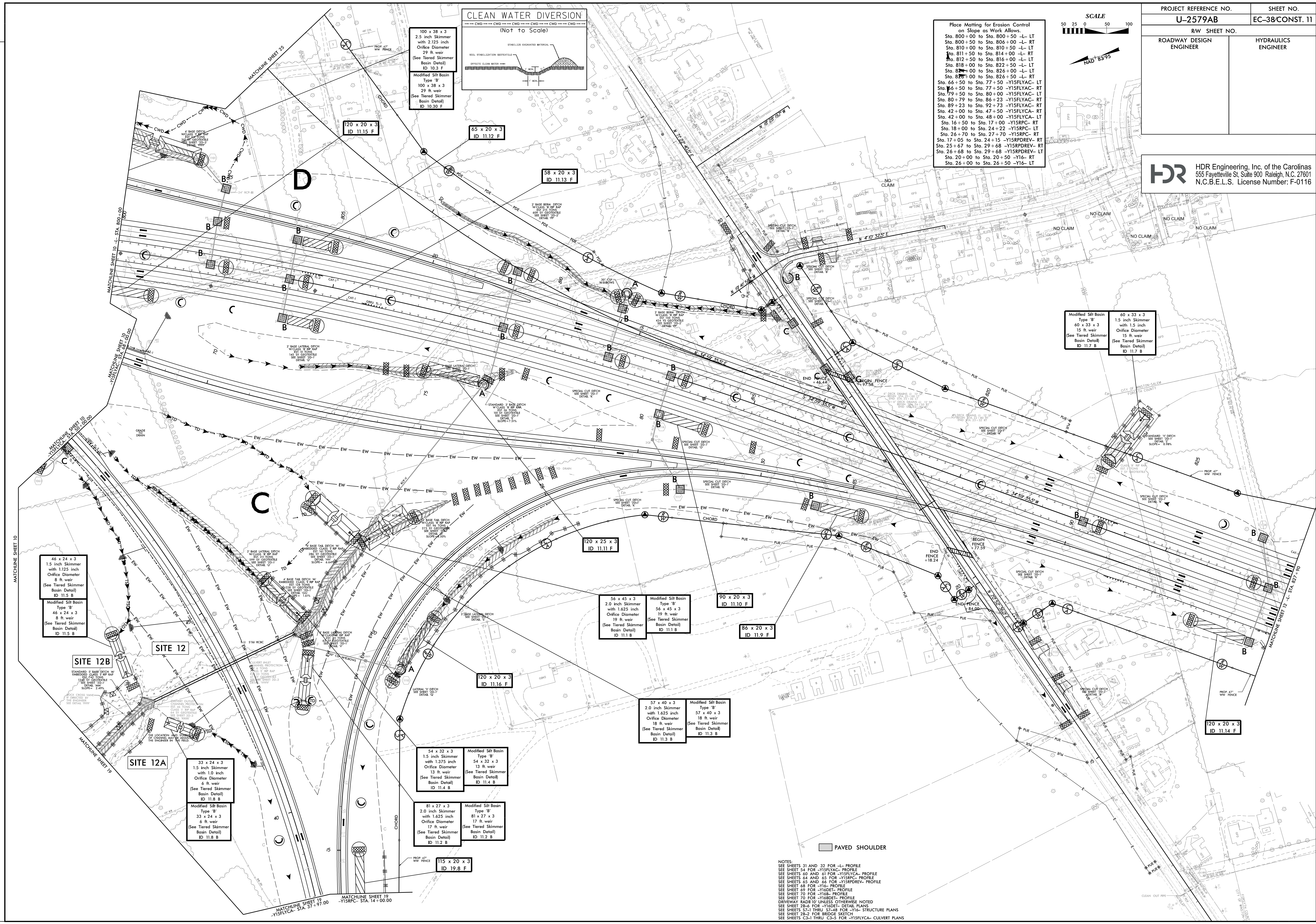


Place Matting for Erosion Control on Slope as Work Allows.

Sta. 800+00 to Sta. 800+50 -L- LT
Sta. 800+50 to Sta. 800+00 -L- RT
Sta. 810+00 to Sta. 810+50 -L- LT
Sta. 810+50 to Sta. 810+00 -L- RT
Sta. 812+50 to Sta. 816+00 -L- LT
Sta. 816+00 to Sta. 822+50 -L- LT
Sta. 822+50 to Sta. 826+00 -L- LT
Sta. 826+00 to Sta. 826+50 -L- RT
Sta. 66+50 to Sta. 77+50 -Y15FLYAC- LT
Sta. 66+50 to Sta. 77+50 -Y15FLYAC- RT
Sta. 79+50 to Sta. 80+00 -Y15FLYAC- LT
Sta. 80+79 to Sta. 86+23 -Y15FLYAC- RT
Sta. 89+23 to Sta. 92+73 -Y15FLYAC- RT
Sta. 42+00 to Sta. 47+50 -Y15FLYCA- RT
Sta. 42+00 to Sta. 48+00 -Y15FLYCA- LT
Sta. 16+50 to Sta. 17+00 -Y15RPC- RT
Sta. 18+00 to Sta. 24+22 -Y15RPC- LT
Sta. 26+70 to Sta. 27+70 -Y15RPC- RT
Sta. 17+05 to Sta. 24+15 -Y15RPDREV- RT
Sta. 25+67 to Sta. 29+68 -Y15RPDREV- RT
Sta. 26+68 to Sta. 29+68 -Y15RPDREV- LT
Sta. 20+00 to Sta. 20+50 -Y16- RT
Sta. 26+00 to Sta. 26+50 -Y16- LT



46 x 24 x 3
 1.5 inch Skimmer
 with 1.25 inch
 Orifice Diameter
 8 ft. weir
 (See Tapered Skimmer
 Basin Detail)
 ID 11.5 B
 Modified Silt Basin
 Type 'B'
 46 x 24 x 3
 8 ft. weir
 (See Tapered Skimmer
 Basin Detail)
 ID 11.5 B

SITE 12B

SITE 12

STANDARD 'B' BASE DITCH W/
 EMERGENCY CLAP NET R/W RAP
 12.0% SLOPE
 SEE SHEET 19 FOR
 DETAIL

SEE LOCATION AND DIMENSIONS
 THE ENGINEER HAS FIELD

SITE 12A

33 x 24 x 3
 1.5 inch Skimmer
 with 1.0 inch
 Orifice Diameter
 6 ft. weir
 (See Tapered Skimmer
 Basin Detail)
 ID 11.8 B
 Modified Silt Basin
 Type 'B'
 33 x 24 x 3
 6 ft. weir
 (See Tapered Skimmer
 Basin Detail)
 ID 11.8 B

54 x 32 x 3
 1.5 inch Skimmer
 with 1.375 inch
 Orifice Diameter
 13 ft. weir
 (See Tapered Skimmer
 Basin Detail)
 ID 11.4 B
 Modified Silt Basin
 Type 'B'
 54 x 32 x 3
 13 ft. weir
 (See Tapered Skimmer
 Basin Detail)
 ID 11.4 B

81 x 27 x 3
 2.0 inch Skimmer
 with 1.625 inch
 Orifice Diameter
 17 ft. weir
 (See Tapered Skimmer
 Basin Detail)
 ID 11.2 B
 Modified Silt Basin
 Type 'B'
 81 x 27 x 3
 17 ft. weir
 (See Tapered Skimmer
 Basin Detail)
 ID 11.2 B

115 x 20 x 3
 ID 19.8 F

56 x 45 x 3
 2.0 inch Skimmer
 with 1.625 inch
 Orifice Diameter
 19 ft. weir
 (See Tapered Skimmer
 Basin Detail)
 ID 11.1 B
 Modified Silt Basin
 Type 'B'
 56 x 45 x 3
 19 ft. weir
 (See Tapered Skimmer
 Basin Detail)
 ID 11.1 B

57 x 40 x 3
 2.0 inch Skimmer
 with 1.625 inch
 Orifice Diameter
 18 ft. weir
 (See Tapered Skimmer
 Basin Detail)
 ID 11.3 B
 Modified Silt Basin
 Type 'B'
 57 x 40 x 3
 18 ft. weir
 (See Tapered Skimmer
 Basin Detail)
 ID 11.3 B

90 x 20 x 3
 ID 11.10 F

86 x 20 x 3
 ID 11.9 F

NOTES:
 SEE SHEETS 31 AND 32 FOR -L- PROFILE
 SEE SHEET 34 FOR -Y15FLYAC- PROFILE
 SEE SHEETS 40 AND 41 FOR -Y15FLYCA- PROFILE
 SEE SHEETS 64 AND 65 FOR -Y15RPC- PROFILE
 SEE SHEETS 65 AND 66 FOR -Y15RPDREV- PROFILE
 SEE SHEET 68 FOR -Y16- PROFILE
 SEE SHEET 69 FOR -Y16B- PROFILE
 SEE SHEET 70 FOR -Y16B- PROFILE
 SEE SHEET 70 FOR -Y16B- PROFILE
 DRIVEWAY RADII UNLESS OTHERWISE NOTED
 SEE SHEET 78-8 FOR -Y16B- DETAIL PLANS
 SEE SHEETS 57-1 THRU 57-48 FOR -Y16- STRUCTURE PLANS
 SEE SHEETS 2B-2 FOR BRIDGE SKETCH
 SEE SHEETS C2-1 THRU C2-5 FOR -Y15FLYCA- CULVERT PLANS

PLOT DRIVER: NCDOT_pdf_color_eng-100.plt
 USER: MDIEHL
 FILE: NCDOT\NCDOT-U2579AB\6.0.CAD\BIM\6.2.Work\In_Progress\U-2579AB\Erosion_Control\U2579ab_EC_PSH.dgn
 PENTABLE: NCDOT_EC_FINAL_BW.tbl
 DATE: 7/16/2021
 TIME: 1:36:59 PM
 REVISIONS