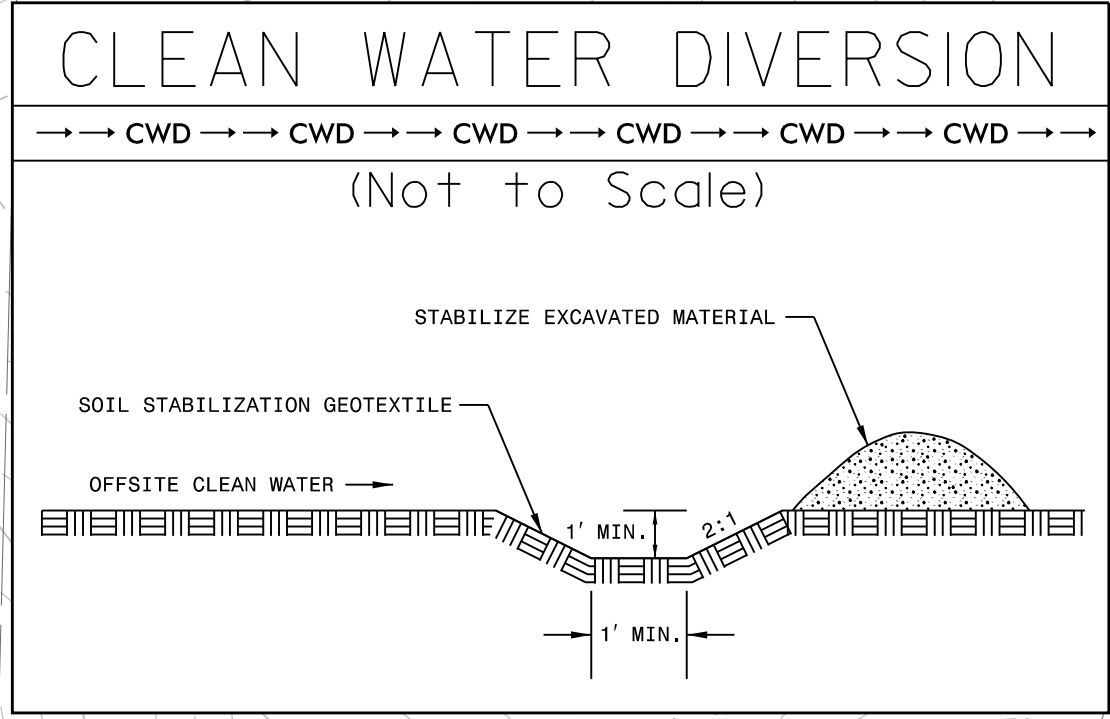


PROJECT REFERENCE NO.	SHEET NO.
U-2579AB	EC-22CONSTR. 22
RW SHEET NO.	
ROADWAY DESIGN ENGINEER	HYDRAULICS ENGINEER

**HDR** HDR Engineering, Inc. of the Carolinas  
 555 Fayetteville St. Suite 900 Raleigh, N.C. 27601  
 N.C.B.E.L.S. License Number: F-0116

CLEARING AND GRUBBING  
 EROSION CONTROL FOR  
 CONSTRUCTION SHEET 22

NOTE:  
 PLACE TEMPORARY ROCK SEDIMENT DAMS TYPE - B  
 AND TEMPORARY ROCK SILT CHECKS TYPE - A AT  
 DRAINAGE OUTLETS.



UTILIZE BEST MANAGEMENT PRACTICES IN ORDER TO MANAGE STREAM FLOW  
 UNTIL PIPE SYSTEMS ARE IN PLACE, IN ACCORDANCE WITH NCDOT BEST MANAGEMENT  
 PRACTICES FOR CONSTRUCTION AND MAINTENANCE ACTIVITIES MANUAL.

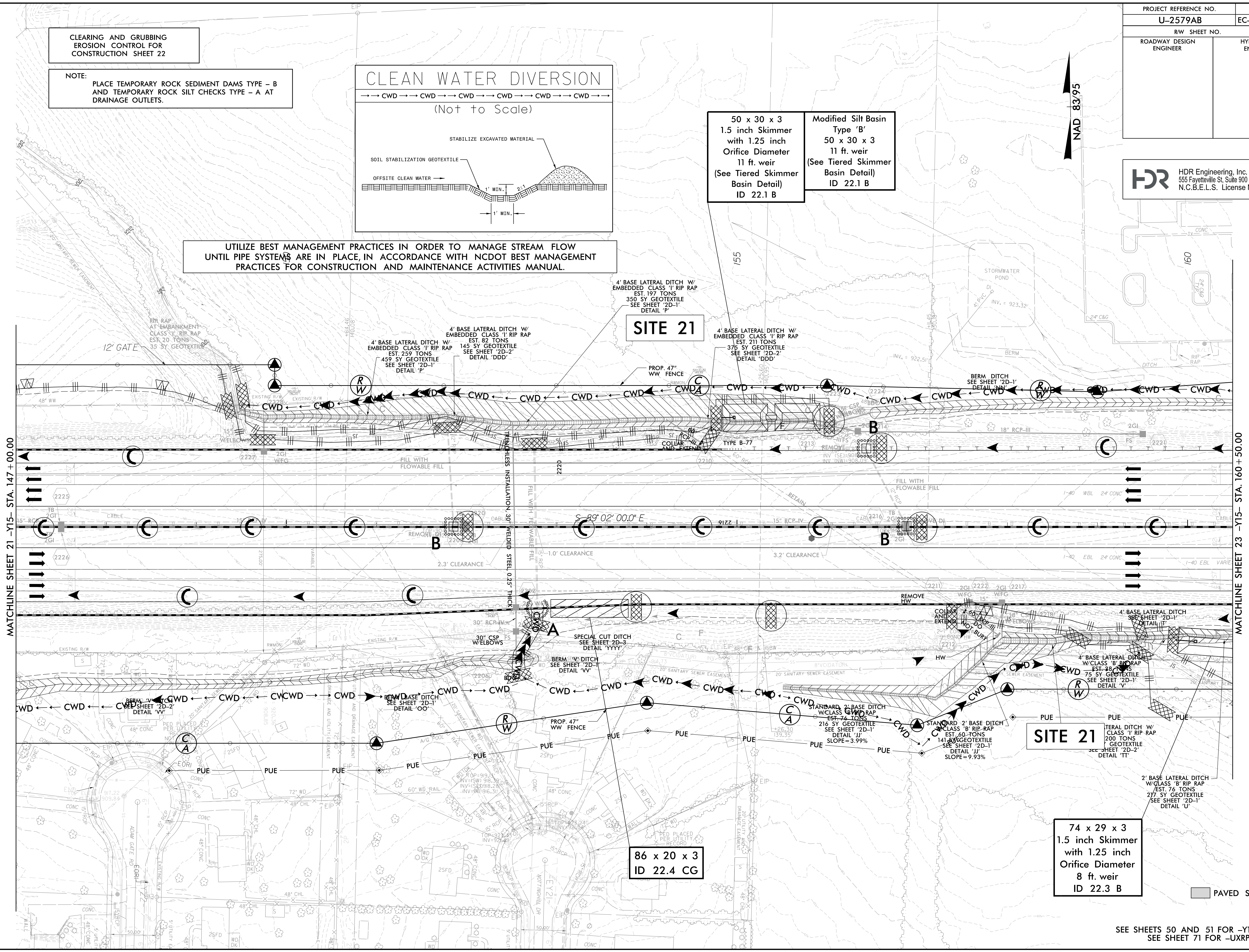
50 x 30 x 3  
 1.5 inch Skimmer  
 with 1.25 inch  
 Orifice Diameter  
 11 ft. weir  
 (See Tiered Skimmer  
 Basin Detail)  
 ID 22.1 B

Modified Silt Basin  
 Type 'B'  
 50 x 30 x 3  
 11 ft. weir  
 (See Tiered Skimmer  
 Basin Detail)  
 ID 22.1 B

**SITE 21**

86 x 20 x 3  
 ID 22.4 CG

74 x 29 x 3  
 1.5 inch Skimmer  
 with 1.25 inch  
 Orifice Diameter  
 8 ft. weir  
 ID 22.3 B



MATCHLINE SHEET 21 -Y15- STA. 147 + 00.00

MATCHLINE SHEET 23 -Y15- STA. 160 + 50.00

REVISIONS

PLOT DRIVER: NCDOT\_pdf\_color\_eng\_100.plt  
 USER: MDIEHL  
 FILE: NCDOT\NCDOT-U2579AB\6.0.CAD.BTM\6.2.Work\In\_Progress\U-2579AB\Revision Control\U2579ab\_EC\_PSH.dgn

NOTES:  
 SEE SHEETS 50 AND 51 FOR -Y15- PROFILE  
 SEE SHEET 71 FOR -UXRPC- PROFILE