

PROJECT REFERENCE NO.	SHEET NO.
U-2579AB	EC-7/CONST. 7
RW SHEET NO.	
ROADWAY DESIGN ENGINEER	HYDRAULICS ENGINEER

HDR HDR Engineering, Inc. of the Carolinas
 555 Fayetteville St. Suite 900 Raleigh, N.C. 27601
 N.C.B.E.L.S. License Number: F-0116

CLEARING AND GRUBBING
 EROSION CONTROL FOR
 CONSTRUCTION SHEET 7

NOTE:
 PLACE TEMPORARY ROCK SEDIMENT DAMS TYPE - B
 AND TEMPORARY ROCK SILT CHECKS TYPE - A AT
 DRAINAGE OUTLETS.

63 x 61 x 3
 2.5 inch Skimmer
 with 2.125 inch
 Orifice Diameter
 29 ft. weir
 (See Tiered Skimmer
 Basin Detail)
 ID 7.2 CG

Modified Silt Basin
 Type 'B'
 63 x 61 x 3
 29 ft. weir
 (See Tiered Skimmer
 Basin Detail)
 ID 7.2 CG

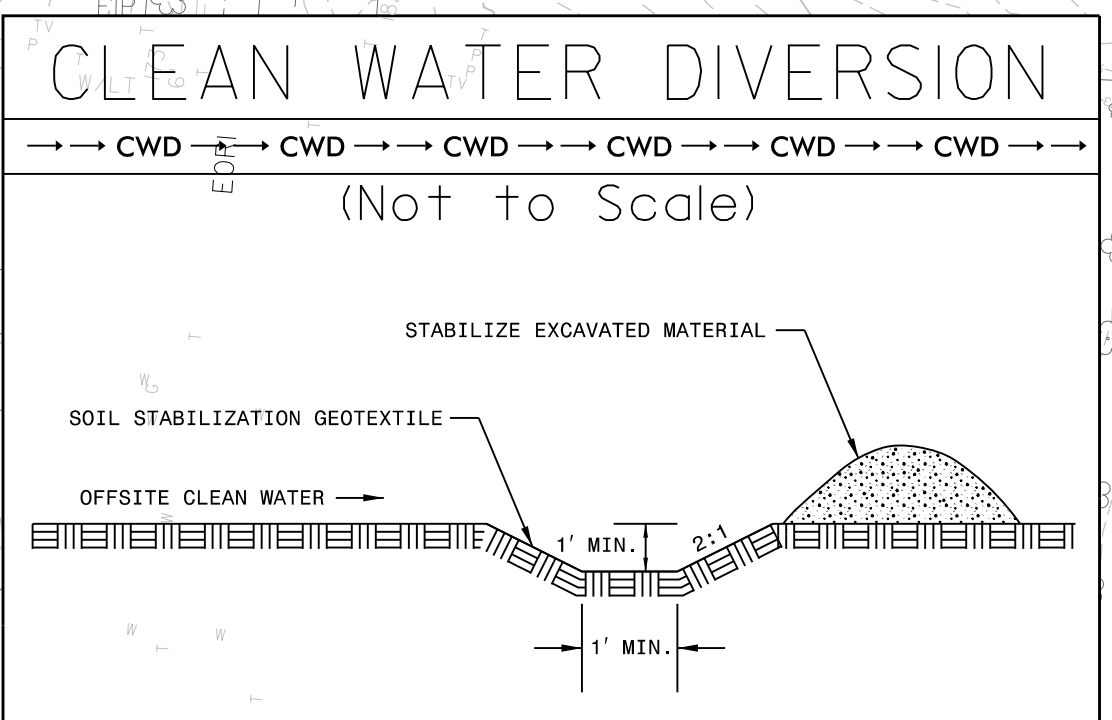
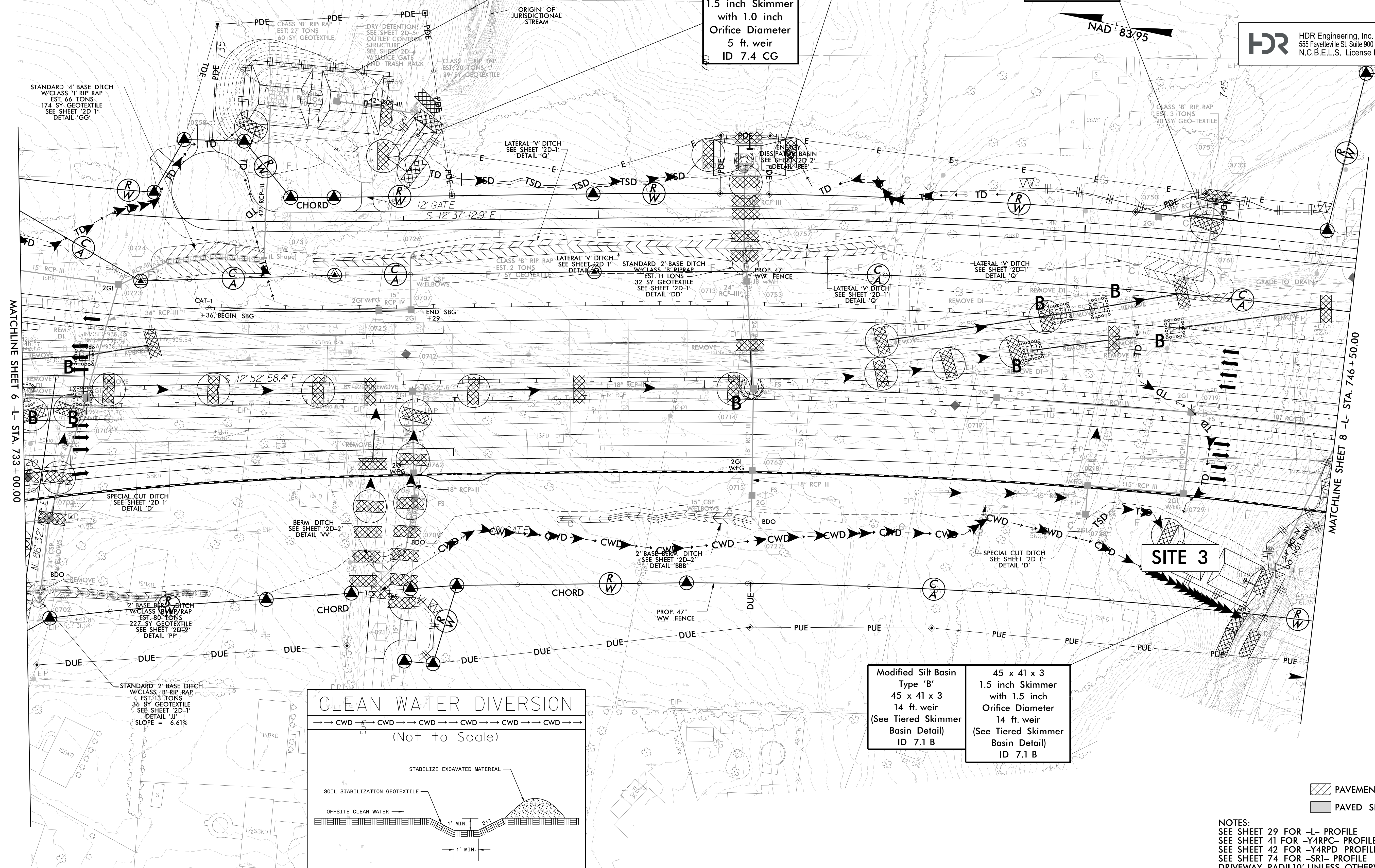
37 x 74 x 3
 1.5 inch Skimmer
 with 1.5 inch
 Orifice Diameter
 11 ft. weir
 ID 7.3 B

52 x 20 x 3
 1.5 inch Skimmer
 with 0.875 inch
 Orifice Diameter
 4 ft. weir
 ID 7.8 CG

50 x 25 x 3
 1.5 inch Skimmer
 with 1.0 inch
 Orifice Diameter
 5 ft. weir
 ID 7.4 CG

Modified Silt Basin
 Type 'B'
 45 x 41 x 3
 14 ft. weir
 (See Tiered Skimmer
 Basin Detail)
 ID 7.1 B

45 x 41 x 3
 1.5 inch Skimmer
 with 1.5 inch
 Orifice Diameter
 14 ft. weir
 (See Tiered Skimmer
 Basin Detail)
 ID 7.1 B



MATCHLINE SHEET 6 - L- STA. 733 + 00.00

MATCHLINE SHEET 8 - L- STA. 746 + 50.00

▨ PAVEMENT REMOVAL
 ▨ PAVED SHOULDER

NOTES:
 SEE SHEET 29 FOR -L- PROFILE
 SEE SHEET 41 FOR -Y4RCD- PROFILE
 SEE SHEET 42 FOR -SRI- PROFILE
 SEE SHEET 74 FOR -SRI- PROFILE
 DRIVEWAY RADII 10' UNLESS OTHERWISE NOTED

PLOT DRIVER: NCDOT_pdf_color_eng_100.pht
 USER: MDIEHL
 FILE: NCDOT\NCDOT-U2579AB\6.0.CAD.BTM\6.2.Work\In_Progress\U-2579AB\Erosion_Control\U2579ab_EC_PSH.dgn
 DATE: 7/16/2021
 TIME: 11:20:00 PM
 PENTABLE: NCDOT_EC_C&G_BW.tbl
 REVISIONS