

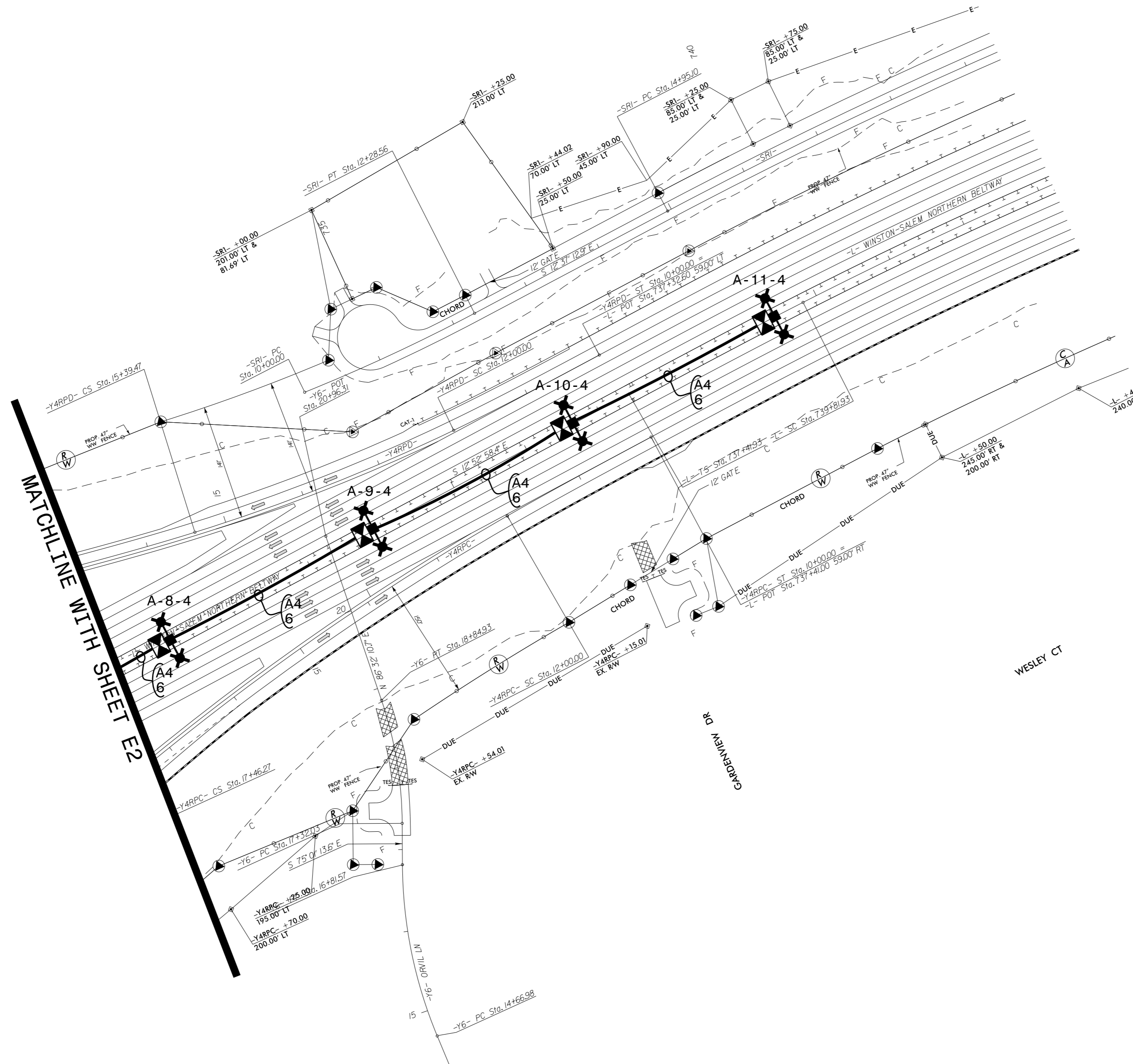
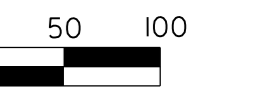
USE FOR LIGHTING CONSTRUCTION ONLY

PROJECT REFERENCE NO. U-2579AB SHEET NO. E-3



DOCUMENT NOT CONSIDERED FINAL UNLESS ALL SIGNATURES COMPLETED

SEE SHEET "E-1" FOR LEGEND & NOTES



LOAD SCHEDULE  
SW QUAD NEAR MOTSINGER DR.

1Ø, 3W, 240/480 VAC CONTROL SYSTEM "A"

CIRCUIT ID	SINGLE ARM 1 @ 285W MAX. LED	TWIN ARM 2 @ 285W LED	100' HIGH MAST W/ 6 560W MAX. LED LUMINAIRES	AMPS @ 480V	KW LOAD	BREAKER SIZE (AMPS)
A1		A-4, A-5, A-6	A-1	10.6	5.1	15
A2	A-12, A-13		A-2	8.2	3.9	15
A3			A-3	7.0	3.4	15
A4		A-7, A-8, A-9 A-10, A-11		6.0	2.9	15
A5	A-14 - A-24			6.6	3.2	15
SPARE						15
TOTAL	13	8	3	38.4	18.5	

09-JUL-2021 08:24 R:\Lighting\Lighting Design\U-2579AB-1&e.psh.e3.dgn

2			
1			
Rev.	Date	Description	Approved
NORTH CAROLINA DEPARTMENT OF TRANSPORTATION ROADWAY DESIGN LIGHTING/ELECTRICAL SECTION <b>LIGHTING LAYOUT</b> WS NORTHERN BELTWAY /KERNERSVILLE RD INTERCHANGE FOSYTH COUNTY			
Drawn By:	AB	Approved By:	Dwg No.: