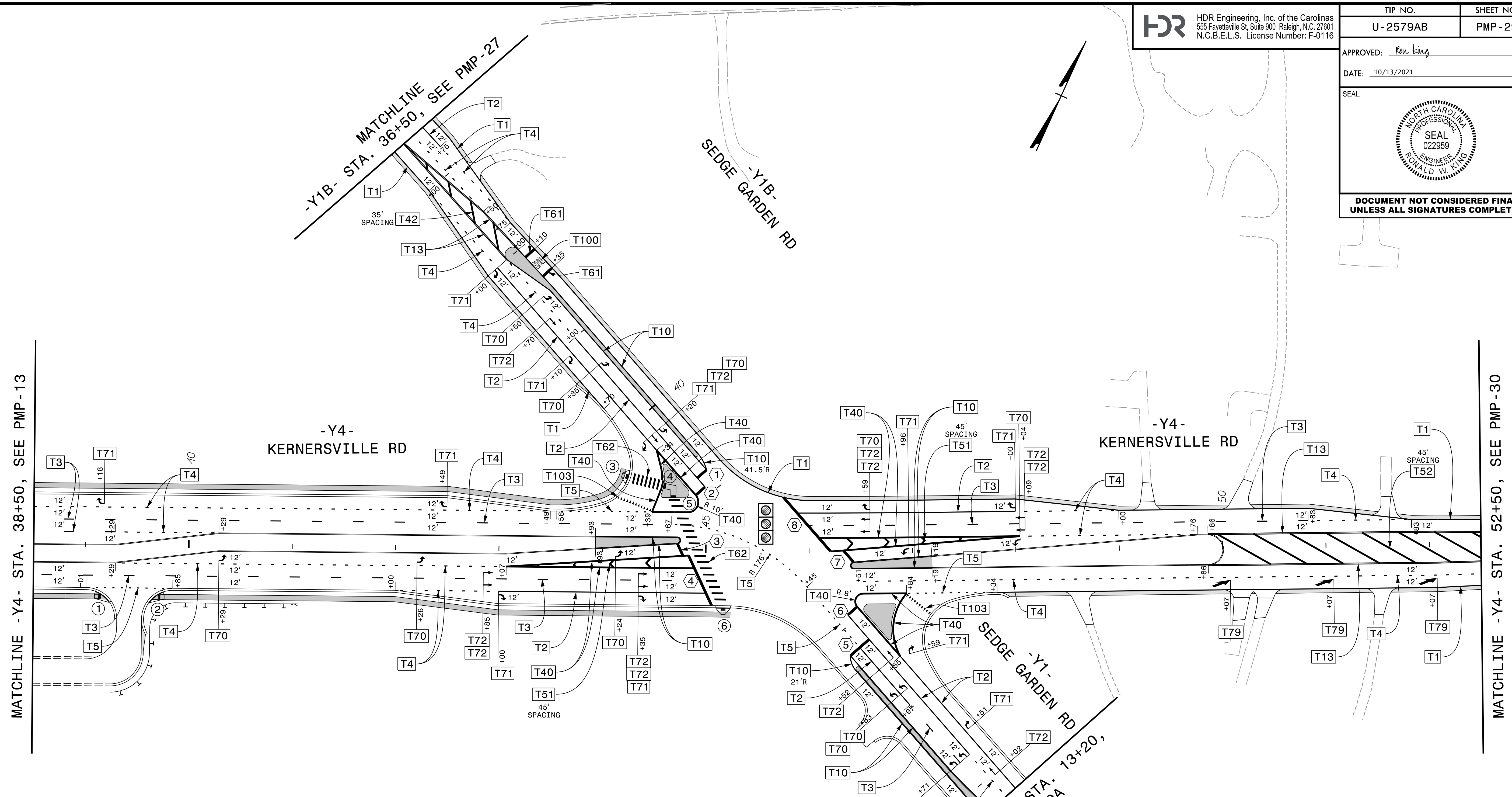


**DOCUMENT NOT CONSIDERED FINAL
 UNLESS ALL SIGNATURES COMPLETED**



MATCHLINE -Y4- STA. 38+50, SEE PMP-13

MATCHLINE -Y4- STA. 52+50, SEE PMP-30

| T61 STOPBAR LOCATIONS | |
|-----------------------|--|
| ① | -Y1B- STA. 40+79.99, 4.00' LT to -Y1B- STA. 40+79.99, 8.00' RT |
| ② | -Y1B- STA. 40+91.55, 8.00' RT to -Y1B- STA. 40+91.55, 20.00' RT |
| ③ | -Y4- STA. 44+72.59, 8.51' LT to -Y4- STA. 44+78.08, 3.14' RT |
| ④ | -Y4- STA. 44+83.48, 2.77' RT to -Y4- STA. 45+06.21, 51.00' RT |
| ⑤ | -Y1- STA. 11+23.20, 9.25' RT to -Y1- STA. 11+23.20, 14.75' LT |
| ⑥ | -Y1- STA. 10+91.90, 14.75' LT to -Y1- STA. 10+91.90, 26.75' LT |
| ⑦ | -Y4- STA. 46+42.99, 8.51' RT to -Y4- STA. 46+33.23, 2.77' LT |
| ⑧ | -Y4- STA. 46+09.39, 15.00' LT to -Y4- STA. 45+75.02, 54.13' LT |

| CURB RAMP LOCATIONS (CENTER OF RAMP OR PATH AT FACE OF CURB OR ISLAND) | |
|--|----------------------------------|
| ① | -Y4- STA. 39+18.82, 47.50' RT |
| ② | -Y4- STA. 39+66.94, 47.50' RT |
| ③ | -Y1B- STA. 40+44.42, 51.50' RT |
| ④ | -Y1B- STA. 40+64.34, 37.48' RT * |
| ⑤ | -Y4- STA. 44+68.25, 53.00' LT * |
| ⑥ | -Y4- STA. 45+17.27, 53.00' RT |

* ALTERNATE CURB RAMP DESIGN
 TRIANGULAR ISLAND WITH CUT THROUGH

PAVEMENT MARKING PLAN

PLOT DRIVER: NCDOT_color_eng_50.plt
 USER: CHARNDEN
 DATE: 6/2/2021
 TIME: 4:25:43 PM
 FILE: p:\dwg\hdr\users\charnden\2015\NCDOT_TMSD_Limited_Services_Contract_M_7000016704\NCDOT_U2579AB_Sign_and_Mark_v6.0_CAD_BIM_v6.2_WIP\Pavement_Marking_U2579AB_PM_PMP29.dgn